



TEMPORARY ABANDONMENT WELL APPLICATION

All blanks must be complete

OPERATOR: License# _____
 Name: _____
 Address 1: _____
 Address 2: _____
 City: _____ State: _____ Zip: _____ + _____
 Contact Person: _____
 Phone: (_____) _____
 Contact Person Email: _____
 Field Contact Person: _____
 Field Contact Person Phone: (_____) _____

API No. 15- _____
 Spot Description: _____
 _____ - _____ - _____ - _____ Sec. _____ Twp. _____ S. R. _____ E W
 _____ feet from N / S Line of Section
 _____ feet from E / W Line of Section
 GPS Location: Lat: _____, Long: _____
(e.g. xx.xxxxx) (e.g. -xxx.xxxxx)
 Datum: NAD27 NAD83 WGS84
 County: _____ Elevation: _____ GL KB
 Lease Name: _____ Well #: _____
 Well Type: (check one) Oil Gas OG WSW Other: _____
 SWD Permit #: _____ ENHR Permit #: _____
 Gas Storage Permit #: _____
 Spud Date: _____ Date Shut-In: _____

	Conductor	Surface	Production	Intermediate	Liner	Tubing
Size						
Setting Depth						
Amount of Cement						
Top of Cement						
Bottom of Cement						

Casing Fluid Level from Surface: _____ How Determined? _____ Date: _____
 Casing Squeeze(s): _____ to _____ w / _____ sacks of cement, _____ to _____ w / _____ sacks of cement. Date: _____
(top) (bottom) (top) (bottom)
 Do you have a valid Oil & Gas Lease? Yes No
 Depth and Type: Junk in Hole at _____ Tools in Hole at _____ Casing Leaks: Yes No Depth of casing leak(s): _____
(depth) (depth)
 Type Completion: ALT. I ALT. II Depth of: DV Tool: _____ w / _____ sacks of cement Port Collar: _____ w / _____ sack of cement
(depth) (depth)
 Packer Type: _____ Size: _____ Inch Set at: _____ Feet
 Total Depth: _____ Plug Back Depth: _____ Plug Back Method: _____

Geological Data:

Formation Name	Formation Top	Formation Base	Completion Information
1. _____	At: _____	to _____ Feet	Perforation Interval _____ to _____ Feet or Open Hole Interval _____ to _____ Feet
2. _____	At: _____	to _____ Feet	Perforation Interval _____ to _____ Feet or Open Hole Interval _____ to _____ Feet

UNDER PENALTY OF PERJURY I HEREBY ATTEST THAT THE INFORMATION CONTAINED HEREIN IS TRUE AND CORRECT TO THE BEST OF MY KNOWLEDGE

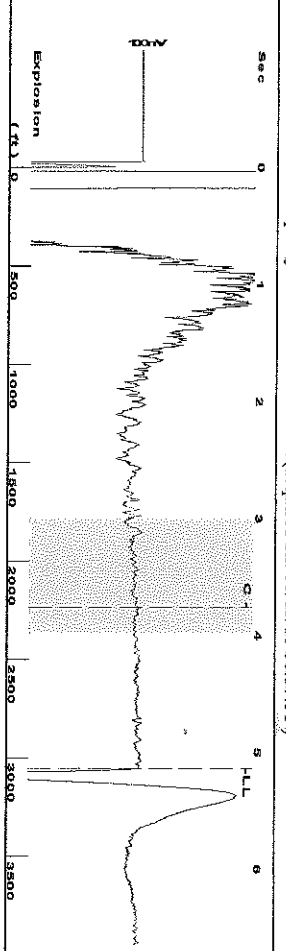
Submitted Electronically

Do NOT Write in This Space - KCC USE ONLY	Date Tested: _____	Results: _____	Date Plugged: _____	Date Repaired: _____	Date Put Back in Service: _____
	Review Completed by: _____ Comments: _____				
TA Approved: <input type="checkbox"/> Yes <input type="checkbox"/> Denied Date: _____					

Mail to the Appropriate KCC Conservation Office:

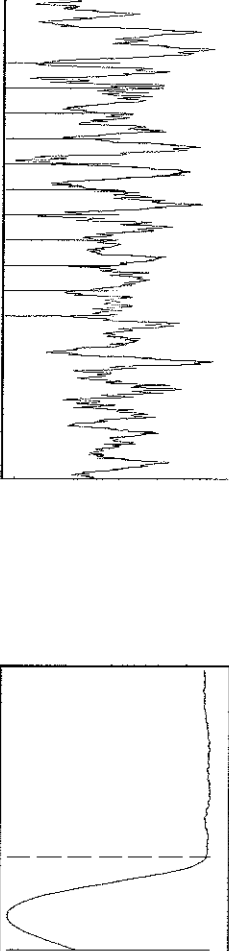
	KCC District Office #1 - 210 E. Frontview, Suite A, Dodge City, KS 67801	Phone 620.225.8888
	KCC District Office #2 / UPGS - 3450 N. Rock Road, Building 600, Suite 601, Wichita, KS 67226	Phone 316.630.4000
	KCC District Office #3 - 1500 SW Seventh Steet, Chanute, KS 66720	Phone 620.432.2300
	KCC District Office #4 - 2301 E. 13th Street, Hays, KS 67601-2651	Phone 785.625.0550

Group: MyWells Well: Bucklin (acquired on: 01/13/16 06:37:51)



Filter Type High Pass Automatic Collar Count Yes
 Manual Acoustic Velocity 1217.34 f/s Manual JTS/sec 19.2678
 Time 5.138 sec
 Joints 96.6395 Jts
 Depth 3052.84 ft

[3.0 to 4.0 (Sec)]



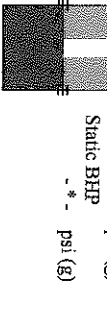
Analysis Method: Automatic

Group: MyWells Well: Bucklin (acquired on: 01/13/16 06:37:51)

Production	Current	Potential	Casing Pressure	Producing
Oil	-*-	-*-	-0.4 psi (g)	Annular
Water	-*-	-*-	Casing Pressure Buildup	Gas Flow
Gas	-*-	-*-	-0.118 psi	0 MascfD
IPR Method		Vogel	2.00 min	% Liquid
PBHP/SBHP		-*-	Gas/Liquid Interface Pressure	100 %
Production Efficiency		0.0	0.8 psi (g)	

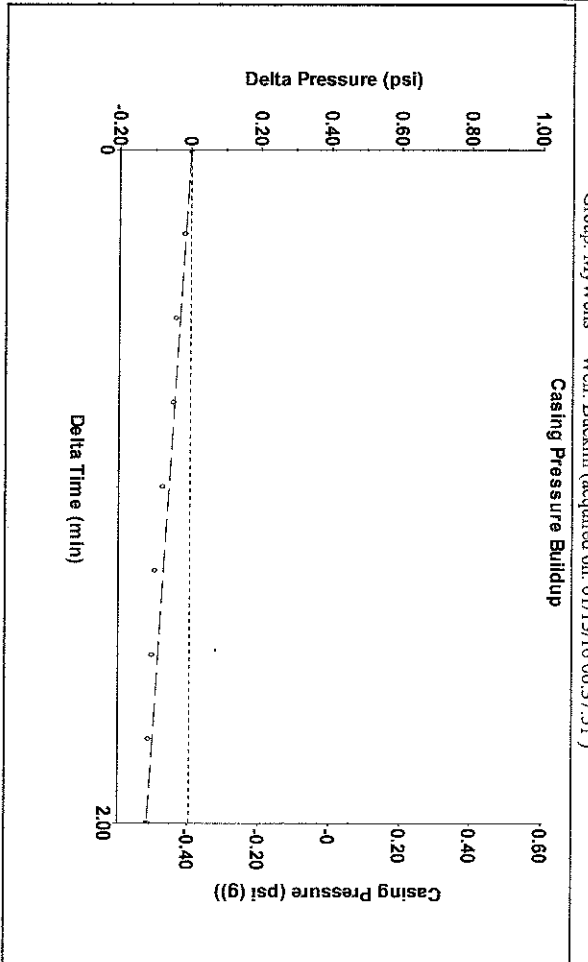
Oil	40 deg API	Liquid Level Depth	
Water	1.05 Sp.Gr.H2O	3052.84 ft	
Gas	0.80 Sp.Gr.AIR	Pump Intake Depth	
Acoustic Velocity	1188.34 f/s	4331.00 ft	
		Formation Depth	
		4331.00 ft	

Formation Submergence
 Total Gaseous Liquid Column HT (TVD) 1278 ft
 Equivalent Gas Free Liquid HT (TVD) 1278 ft



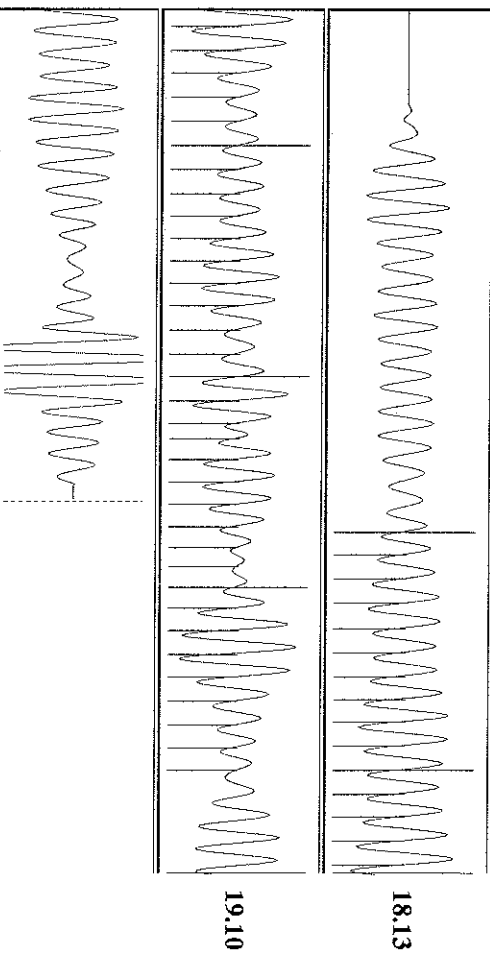
Formation Submergence
 Total Gaseous Liquid Column HT (TVD) 1278 ft
 Equivalent Gas Free Liquid HT (TVD) 1278 ft

Group: MyWells Well: Bucklin (acquired on: 01/13/16 06:37:51)



Change in Pressure -0.12 psi PT12865
 Change in Time 2.00 min Range 0 - 7 psi

Group: MyWells Well: Bucklin (acquired on: 01/13/16 06:37:51)



Acoustic Velocity	1188.34 f/s	Joints counted	48
Joints Per Second	18.8088 Jts/sec	Joints to liquid level	96.6395
Depth to liquid level	3052.84 ft	Filter Width	17.2678
Automatic Collar Count	Yes	Time to 1st Collar	1.208
			3.76

Conservation Division
District Office No. 1
210 E. Frontview, Suite A
Dodge City, KS 67801



Phone: 620-225-8888
Fax: 620-225-8885
<http://kcc.ks.gov/>

Jay Scott Emler, Chairman
Shari Feist Albrecht, Commissioner
Pat Apple, Commissioner

Sam Brownback, Governor

January 26, 2016

Melody C. Fletcher
Oil Producers, Inc. of Kansas
1710 WATERFRONT PKWY
WICHITA, KS 67206-6603

Re: Temporary Abandonment
API 15-151-19036-00-00
BUCKLIN A 1
NE/4 Sec.06-28S-11W
Pratt County, Kansas

Dear Melody C. Fletcher:

"Your temporary abandonment (TA) application for the well listed above has been approved. In accordance with K.A.R. 82-3-111 the TA status of this well will expire 01/26/2017.

- * If you return this well to service or plug it, please notify the District Office.
- * If you sell this well you are required to file a Transfer of Operator form, T-1.
- * If the well will remain temporarily abandoned, you must submit a new TA application, CP-111, before 01/26/2017.

You may contact me at the number above if you have questions.

Very truly yours,

Michael Maier"