



TEMPORARY ABANDONMENT WELL APPLICATION

OPERATOR: License# _____
 Name: _____
 Address 1: _____
 Address 2: _____
 City: _____ State: _____ Zip: _____ + _____
 Contact Person: _____
 Phone: (_____) _____
 Contact Person Email: _____
 Field Contact Person: _____
 Field Contact Person Phone: (_____) _____

API No. 15- _____
 Spot Description: _____
 _____ - _____ - _____ - _____ Sec. _____ Twp. _____ S. R. _____ E W
 _____ feet from N / S Line of Section
 _____ feet from E / W Line of Section
 GPS Location: Lat: _____, Long: _____
(e.g. xx.xxxxx) (e.g. -xxx.xxxxx)
 Datum: NAD27 NAD83 WGS84
 County: _____ Elevation: _____ GL KB
 Lease Name: _____ Well #: _____
 Well Type: (check one) Oil Gas OG WSW Other: _____
 SWD Permit #: _____ ENHR Permit #: _____
 Gas Storage Permit #: _____
 Spud Date: _____ Date Shut-In: _____

	Conductor	Surface	Production	Intermediate	Liner	Tubing
Size						
Setting Depth						
Amount of Cement						
Top of Cement						
Bottom of Cement						

Casing Fluid Level from Surface: _____ How Determined? _____ Date: _____

Casing Squeeze(s): _____ to _____ w / _____ sacks of cement, _____ to _____ w / _____ sacks of cement. Date: _____
(top) (bottom) (top) (bottom)

Do you have a valid Oil & Gas Lease? Yes No

Depth and Type: Junk in Hole at _____ Tools in Hole at _____ Casing Leaks: Yes No Depth of casing leak(s): _____
(depth) (depth)

Type Completion: ALT. I ALT. II Depth of: DV Tool: _____ w / _____ sacks of cement Port Collar: _____ w / _____ sack of cement
(depth) (depth)

Packer Type: _____ Size: _____ Inch Set at: _____ Feet

Total Depth: _____ Plug Back Depth: _____ Plug Back Method: _____

Geological Data:

Formation Name	Formation Top	Formation Base	Completion Information
1. _____	At: _____	to _____ Feet	Perforation Interval _____ to _____ Feet or Open Hole Interval _____ to _____ Feet
2. _____	At: _____	to _____ Feet	Perforation Interval _____ to _____ Feet or Open Hole Interval _____ to _____ Feet

~~UNDER PENALTY OF PERJURY I HEREBY ATTEST THAT THE INFORMATION CONTAINED HEREIN IS TRUE AND CORRECT TO THE BEST OF MY KNOWLEDGE~~

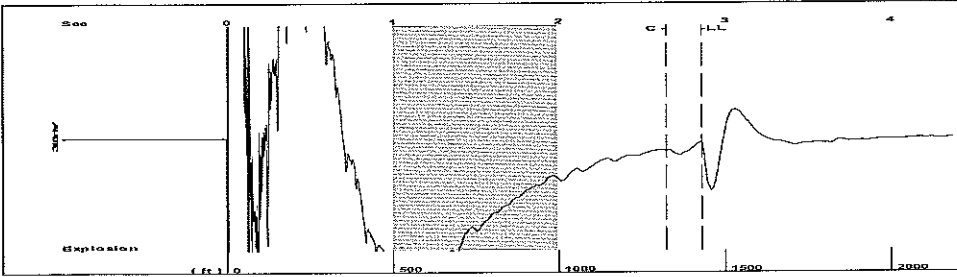
Submitted Electronically

Do NOT Write in This Space - KCC USE ONLY	Date Tested: _____	Results: _____	Date Plugged: _____	Date Repaired: _____	Date Put Back in Service: _____
	Review Completed by: _____ Comments: _____				
TA Approved: <input type="checkbox"/> Yes <input type="checkbox"/> Denied Date: _____					

Mail to the Appropriate KCC Conservation Office:

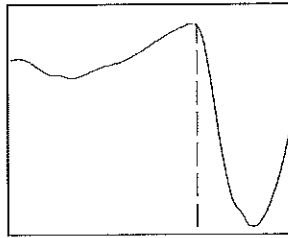
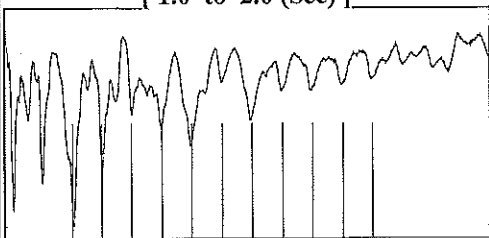
	KCC District Office #1 - 210 E. Frontview, Suite A, Dodge City, KS 67801	Phone 620.225.8888
	KCC District Office #2 / UPGS - 3450 N. Rock Road, Building 600, Suite 601, Wichita, KS 67226	Phone 316.630.4000
	KCC District Office #3 - 1500 SW Seventh Steet, Chanute, KS 66720	Phone 620.432.2300
	KCC District Office #4 - 2301 E. 13th Street, Hays, KS 67601-2651	Phone 785.625.0550

Group: MyWells Well: MLP Black 1-3 (acquired on: 01/11/16 10:55:31)



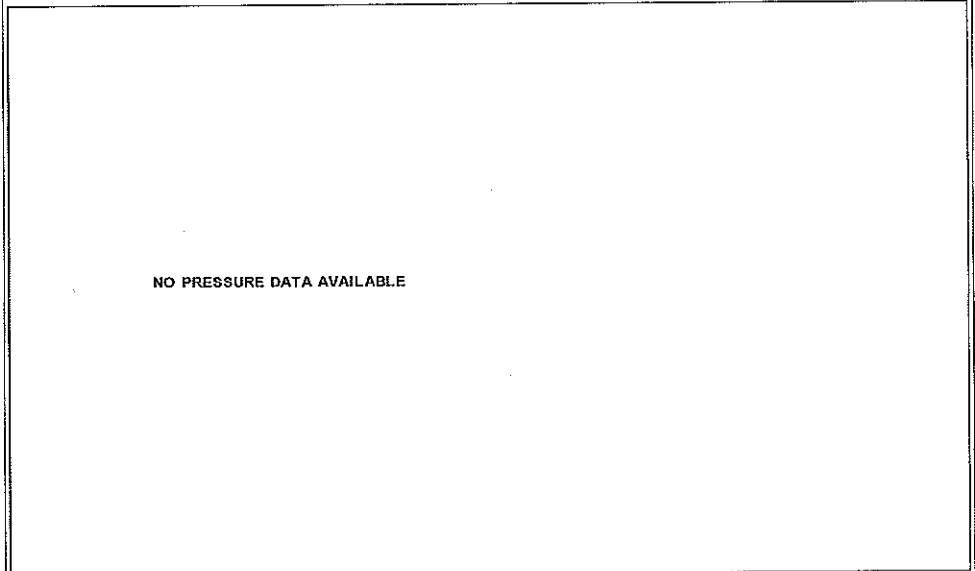
Filter Type High Pass Automatic Collar Count Yes Time 2.858 sec
 Manual Acoustic Veloc 994.543 ft/s Manual JTS/sec 16.0514 Joints 46.0968 Jts
 Depth 1428.08 ft

[1.0 to 2.0 (Sec)]



Analysis Method: Automatic

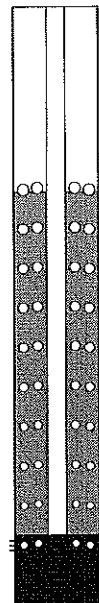
Group: MyWells Well: MLP Black 1-3 (acquired on: 01/11/16 10:55:31)



Change in Pressure 903.85 psi NONE Range 0 - ? psi
 Change in Time 0.75 min

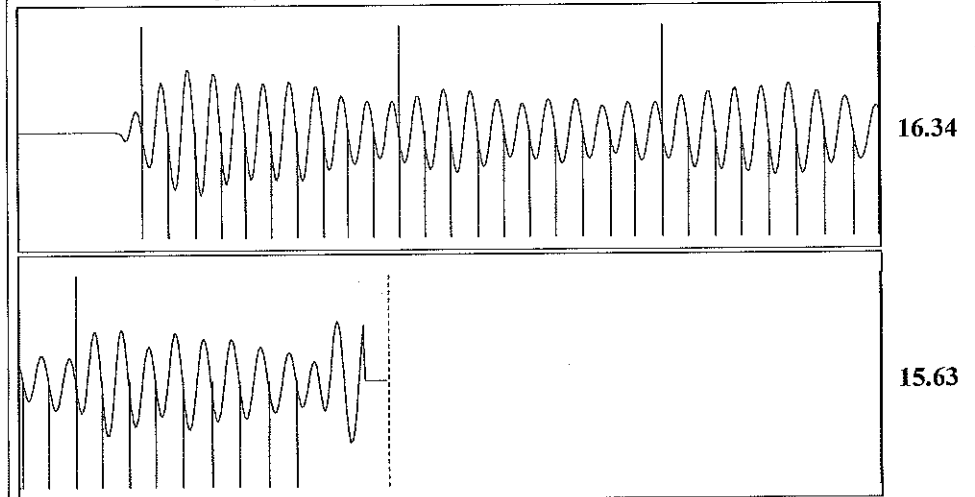
Group: MyWells Well: MLP Black 1-3 (acquired on: 01/11/16 10:55:31)

Production			
Current	Potential	Casing Pressure	Producing
Oil - * -	0.0 BBL/D	4532.9 psi (g)	Annular Gas Flow
Water - * -	0.0 BBL/D	Casing Pressure Buildup	52629 Mscf/D
Gas - * -	0.0 Mscf/D	903.8 psi	% Liquid
		0.75 min	19 %
IPR Method	Vogel	Gas/Liquid Interface Pressure	
PBHP/SBHP	0.92	4712.5 psi (g)	
Production Efficiency	13.8		
Oil 40 deg.API		Liquid Level Depth	
Water 1.05 Sp.Gr.H2O		1428.08 ft	
Gas 0.70 Sp.Gr.AIR		Pump Intake Depth	
		5330.00 ft	
Acoustic Velocity	999.355 ft/s	Formation Depth	
		5448.00 ft	



Producing
 Annular Gas Flow
 52629 Mscf/D
 % Liquid
 19 %
 Pump Intake
 4867.0 psi (g)
 Producing BHP
 4891.8 psi (g)
 Static BHP
 5314.6 psi (g)

Group: MyWells Well: MLP Black 1-3 (acquired on: 01/11/16 10:55:31)



Acoustic Velocity 999.355 ft/s Joints counted 38
 Joints Per Second 16.129 jts/sec Joints to liquid level 46.0968
 Depth to liquid level 1428.08 ft Filter Width 14.0514 18.0514
 Automatic Collar Count Yes Time to 1st Collar 0.288 2.644

Conservation Division
District Office No. 1
210 E. Frontview, Suite A
Dodge City, KS 67801



Phone: 620-225-8888
Fax: 620-225-8885
<http://kcc.ks.gov/>

Jay Scott Emler, Chairman
Shari Feist Albrecht, Commissioner
Pat Apple, Commissioner

Sam Brownback, Governor

February 02, 2016

Sara Everett
Chesapeake Operating, LLC
6100 N WESTERN AVE
PO BOX 18496
OKLAHOMA CITY, OK 73118-1046

Re: Temporary Abandonment
API 15-081-21034-00-00
MLP BLACK 1-3
NW/4 Sec.03-30S-34W
Haskell County, Kansas

Dear Sara Everett:

"Your temporary abandonment (TA) application for the well listed above has been approved. In accordance with K.A.R. 82-3-111 the TA status of this well will expire 02/02/2017.

- * If you return this well to service or plug it, please notify the District Office.
- * If you sell this well you are required to file a Transfer of Operator form, T-1.
- * If the well will remain temporarily abandoned, you must submit a new TA application, CP-111, before 02/02/2017.

You may contact me at the number above if you have questions.

Very truly yours,

Michael Maier"