

AUSTIN B. KLAUS



Cell 785.650.3629
Work 785.483.3145
Ext 225

PO BOX 352
Russell, KS 67665
austin.klaus@johnofarmer.com

Scale 1:240 (5"=100') Imperial
Measured Depth Log

Well Name: Frisbie #1
Location: Ellis County
License Number: API #15-051-26810-0000
Spud Date: 11/10/15
Surface Coordinates: Section 17, Township 11 South, Range 18 West
2,210' FNL & 330' FEL
Bottom Hole Coordinates: Vertical well with minimal deviation, same as above
Ground Elevation (ft): 1,937' **K.B. Elevation (ft):** 1,945'
Logged Interval (ft): 2,900' **To:** RTD **Total Depth (ft):** 3,600'
Formation: LKC-Arbuckle
Type of Drilling Fluid: Chemical (Andy's)

Region: Kansas
Drilling Completed: 11/16/15

Printed by STRIP.LOG from WellSight Systems 1-800-447-1534 www.WellSight.com

OPERATOR

Company: John O. Farmer, Inc.
Address: 370 W. Wichita Ave.
Russell, KS 67665

Comments

The Frisbie #1 well was drilled by Discovery Drilling Rig #4 (Tool Pusher: Mike Gaschler).

The location for the Frisbie #1 well was found via 3-D seismic survey. Geologic samples were collected and evaluated from 2,900'-3,600'. Structurally, the Frisbie #1 ran 2' low at the Lansing and 3' low at the Arbuckle, to the Frisbie G #1, 1,880' to the north. Three bottom-hole tests were conducted in the Lansing, all yielding negative results. Based upon limited sample shows, poor DST results, and low structural position, the decision was made to plug and abandon the Frisbie #1 well on 11/17/15.

OTHER SYMBOLS

- POROSITY**
 Earthy
 Fenest
 Fracture
 Inter
 Moldic
 Organic
 Pinpoint

- Vuggy
SORTING
 Well
 Moderate
 Poor

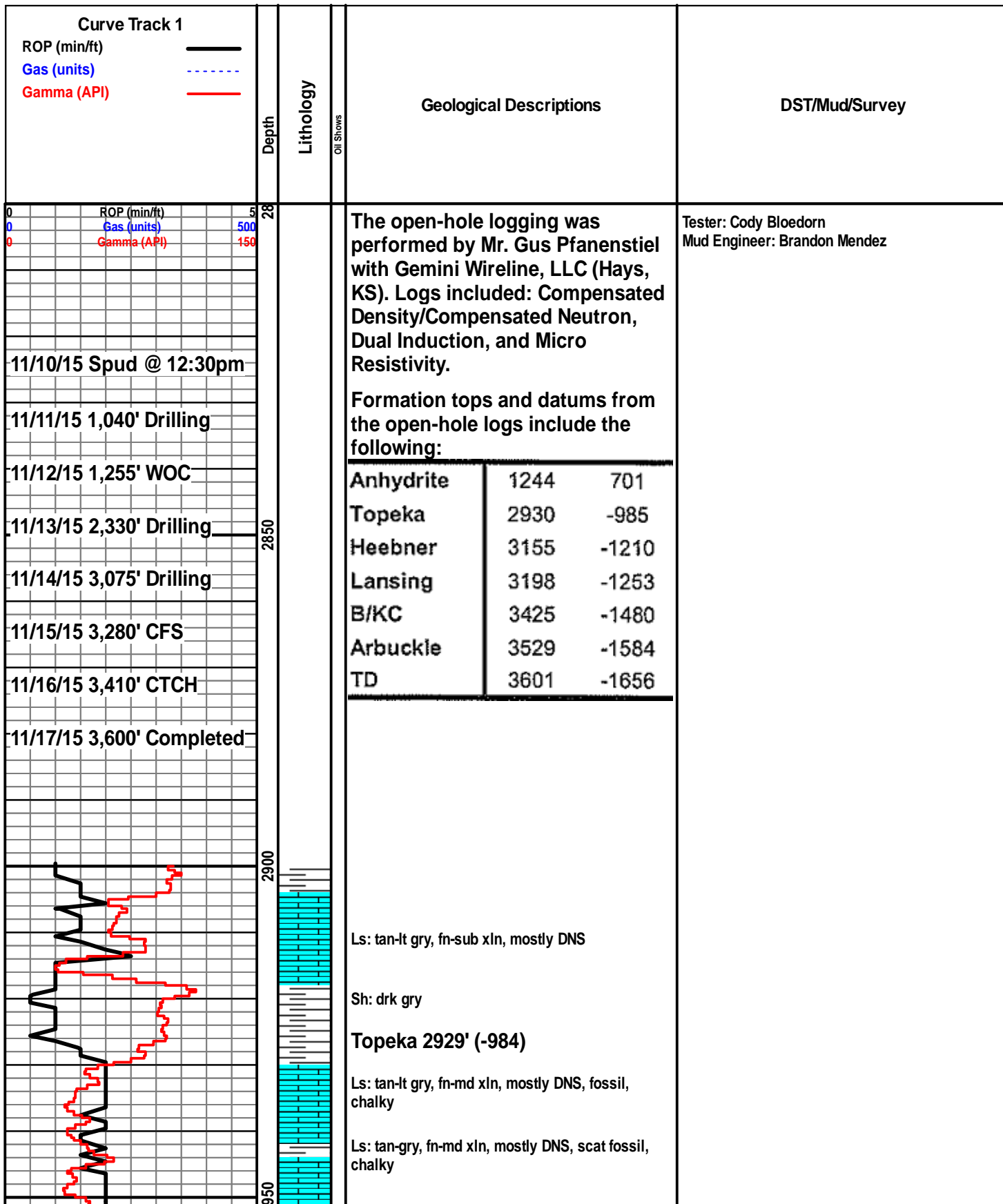
- ROUNDING**
 Rounded
 Subrnd
 Subang
 Angular

- Spotted
 Ques
 Dead

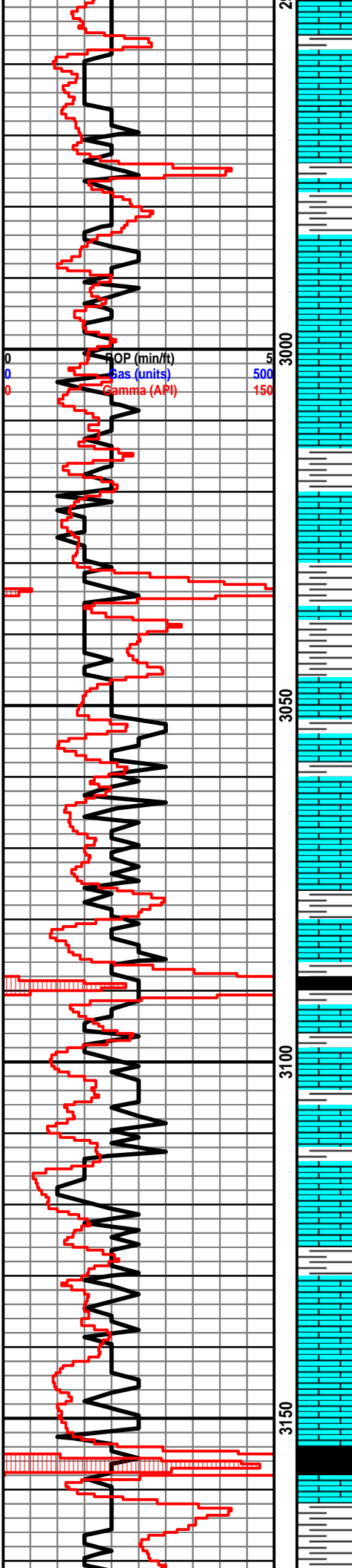
- EVENT**
 Rft
 Sidewall

- INTERVAL**
 Core
 Dst

- OIL SHOW**
 Even



Tester: Cody Bloedorn
Mud Engineer: Brandon Mendez



Ls: ala

Ls: off wh-tan, fn xln, scat vuggy porosity, scat chert-off wh, scat fossil, NSFO

Ls: tan-gry, fn xln, mostly DNS, NSFO

Sh: lt gry

Ls: off wh-tan, fn-md xln, mostly DNS, scat fossil, chalky

Ls: ala

Sh: lt gry-drk gry

Ls: tan-lt gry, fn-md xln, mostly DNS, NSFO, scat fossil, scat chert

Sh: lt gry-drk gry

Ls: ala

Ls: off wh-tan, fn-md xln, scat vuggy porosity, NSFO, scat fossil, chalky

Ls: ala

Sh: drk gry-blk

Ls: tan-lt gry, fn xln, scat int xln porosity, scat chalk, fossil

Ls: tan-gry, fn-md xln, scat pp vuggy porosity, NSFO, scat chert-off wh

Ls: ala

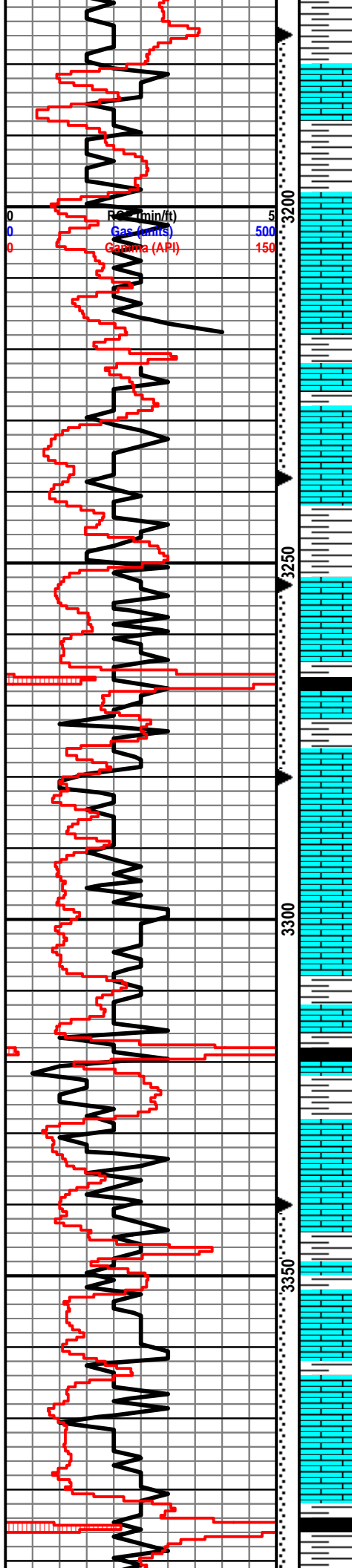
Sh: lt gry-drk gry

Ls: tan-gry, fn-md xln, mostly DNS, scat chalky, chert-off wh

Heebner 3154' (-1209)

Sh: blk, carb, fissile

Sh: drk gry-brn



Ls: off wh-tan, fn xln, scat int xln & vuggy porosity, NSFO, no odor

Sh: drk gry

Lansing 3195' (-1250)

Ls: off wh-tan, fn xln, ool, fair ool porosity, scat oil st, SSFO, sl odor

Sh: lt gry

Ls: off wh-tan, fn-md xln, poor int xln porosity, NSFO, no odor

Sh: drk gry-blk

Ls: off wh-tan, fn xln, poor int xln & vuggy porosity, fair oil st, SSFO, sl odor, scat fossil

Sh: lt gry-brn

Ls: off wh-tan, fn-md xln, scat int xln porosity, scat oil st, VSSFO, sl odor, scat chalk

Sh: drk gry-blk

Sh: lt gry

Ls: off wh-tan, fn-md xln, fossil, poor int fossil porosity, fair oil st, SSFO, sl odor, chalky

Ls: off wh-tan, fn xln, poor int xln porosity, scat oil st, VSSFO, sl odor, scat chalk

Ls: off wh-tan, fn-md xln, poor int xln porosity, scat chert, NSFO

Sh: drk gry-blk, carb

Sh: lt gry-drk gry

Ls: off wh-tan, fn-md xln, poor int xln porosity, scat oil st, NSFO, no odor, scat chalk, chert-off wh

Sh: drk gry

Ls: off wh-tan, fn xln, poor-fair int xln porosity, good oil sat, FSFO, fair odor, scat fossil

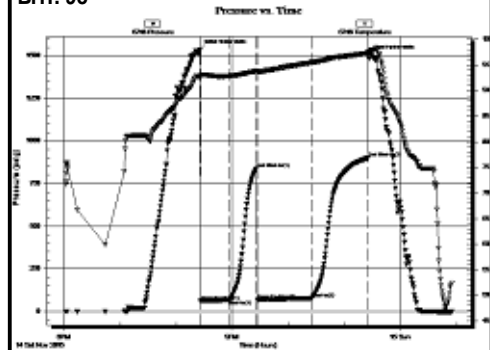
Sh: lt gry-drk gry

Ls: off wh-tan, fn xln, ool, fair ool porosity, fair-good oil sat, FSFO, fair odor, scat fossil, chalky

Sh: drk gry

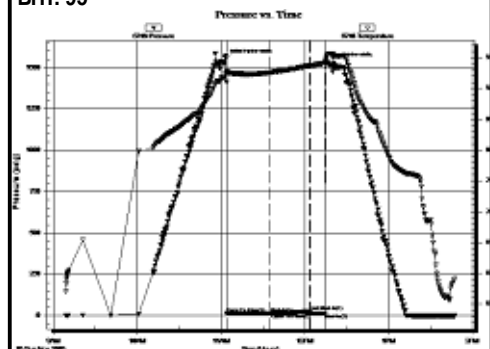
DST #1 3,176-3,238' (Lansing A-C)
30"-30"-60"-60"

IF: weak blow built to 1.75"
FF: weak blow built to 1.5"
Rec: 82' G&OCM (5% G, 15% O, 80% M)
FP: 61-68, 68-77#
SIP: 838-902#
HP: 1,537-1,504#
BHT: 98



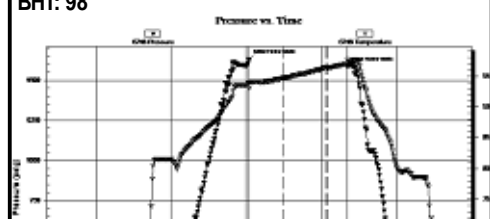
DST #2 3,253-3,280' (Lansing E-F)
30"-30"-10"

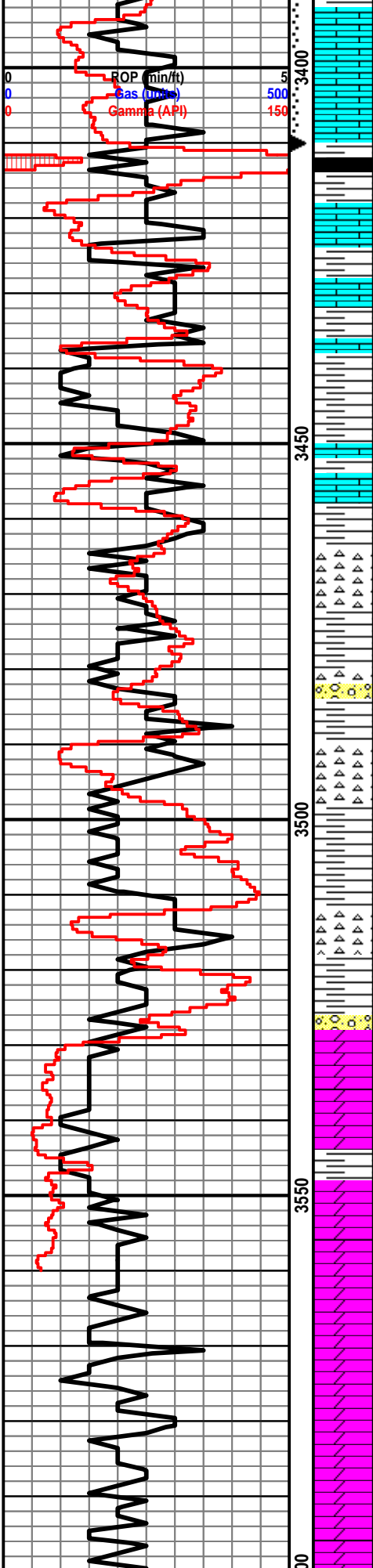
IF: weak surface blow
FF: no blow, pulled tool after 10 minutes
Rec: 1' Mud
FP: 13-13, 14-12#
SIP: 24#
HP: 1,553-1,531#
BHT: 95



DST #3 3,340-3,410' (Lansing I-K)
30"-30"-10"

IF: weak surface blow
FF: no blow, pulled tool after 10 minutes
Rec: 1' Mud
FP: 29-35, 38-40#
SIP: 594#
HP: 1,630-1,584#
BHT: 98





Ls: off wh-tan, fn xln, poor pp vuggy porosity, scat oil st, VSSF0, sl odor, scat fossil

Sh: drk gry

Ls: off wh-tan, fn xln, poor int xln & pp vuggy porosity, scat oil st, VSSF0, sl odor, scat fossil

B/KC 3422' (1477)

Sh: drk gry-brn-grn

Ls: tan-lt gry, fn-md xln, mostly DNS, NSFO

Sh: drk gry-brn-grn

Conglomerate 3449' (-1504)

Ls: tan-lt gry, fn xln, mostly DNS, scat sh: drk gry-brn

Chrt: wh-lt yellow, trip, scat pp vuggy porosity, scat st, NSFO, no odor

Sh: drk gry-brn-grn

Chert: off wh-lt yellow, fn xln, mostly DNS, trip, poor int xln porosity, scat sh: drk gry-drk brn

Sh: lt gry-drk gry

Chert: off wh-lt tan, fn-md xln, mostly DNS, trip, NSFO, qtz: off wh-clr, fn grn, mostly rnd, fairly well sorted, scat oil sat, VSSF0, sl odor

Cong: off wh-tan-brn, fn xln, mostly DNS, chert-off wh, trip, scat sh: drk gry-brn

Arbuckle 3538' (-1593)

Dolo: off wh-tan, fn-md xln, poor-fair int xln porosity, fair oil sat, SSFO, sl odor, scat chert-off wh

Dolo: off wh-tan, fn-md xln, poor int xln porosity, lt oil st, NSFO, no odor, scat cher-off wh

Dolo: ala

Dolo: off wh-tan, fn-md xln, poor-fair int xln porosity, NSFO, no odor, hvy chert-off wh

Dolo: ala

Dolo: off wh-tan, fn-md xln, poor int xln porosity, mostly barren, NSFO

