



DRILL STEM TEST REPORT

Prepared For: **FALCON EXPLORATION INC.**

125 NORTH MARKET SUITE 1252

ATTN: DAVE WILLIAMS

CHESTER-REXFORD 1-35

35-27S-30W GRAY

Start Date: 2015.10.22 @ 09:41:00

End Date: 2015.10.22 @ 16:09:00

Job Ticket #: 01245 DST #: 7

Eagle Testers

1309 Patton Road Great Bend, Kansas 67530

620-791-7394

Printed: 2015.10.22 @ 16:25:59



DRILL STEM TEST REPORT

FALCON EXPLORATION INC.
 125 NORTH MARKET SUITE 1252
 ATTN: DAVE WILLIAMS

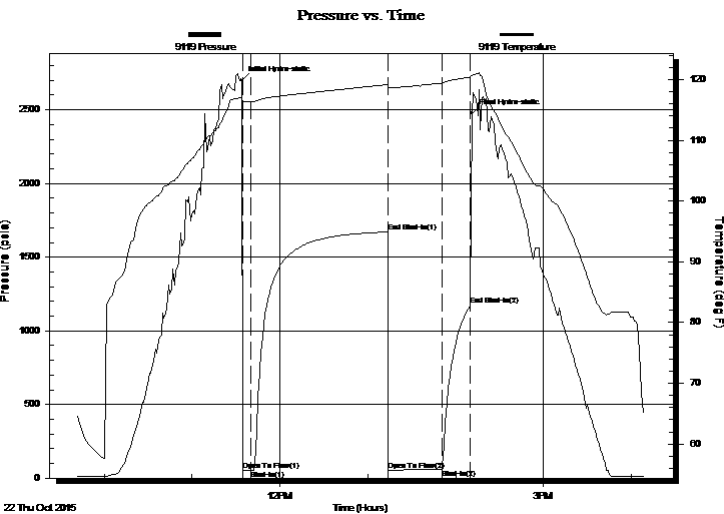
35-27S-30W GRAY
CHESTER-REXFORD 1-35
 Job Ticket: 01245 **DST#: 7**
 Test Start: 2015.10.22 @ 09:41:00

GENERAL INFORMATION:

Formation: **MISSISSIPPI-SALEM**
 Deviated: No Whipstock: ft (KB) Test Type: Conventional Bottom Hole (Initial)
 Time Tool Opened: 11:35:00 Tester: GENE BUDIG
 Time Test Ended: 16:09:00 Unit No: 1
 Interval: **5338.00 ft (KB) To 5378.00 ft (KB) (TVD)** Reference Elevations: 2805.00 ft (KB)
 Total Depth: 5378.00 ft (KB) (TVD) 2792.00 ft (CF)
 Hole Diameter: 7.88 inches Hole Condition: Fair KB to GR/CF: 13.00 ft

Serial #: 9119 Inside
 Press@RunDepth: 1173.31 psia @ 5373.00 ft (KB) Capacity: 5000.00 psia
 Start Date: 2015.10.22 End Date: 2015.10.22 Last Calib.: 2015.10.22
 Start Time: 09:41:00 End Time: 16:09:00 Time On Btm: 2015.10.22 @ 11:34:00
 Time Off Btm: 2015.10.22 @ 14:11:00

TEST COMMENT: 1ST OPENING 7 MINUTES VERY WEAK SURFACE BLOW THROUGH OUT
 1ST SHUT-IN 90 MINUTES-NO BLOW BACK
 2ND OPENING 39 MINUTES-NO BLOW-FLUSHED TOOL-GOOD SURGE-NO HELP
 2ND SHUT-IN 20 MINUTES-NO BLOW BACK



PRESSURE SUMMARY

Time (Min.)	Pressure (psia)	Temp (deg F)	Annotation
0	2699.70	117.05	Initial Hydro-static
1	50.13	116.41	Open To Flow (1)
7	52.06	116.34	Shut-In(1)
100	1671.27	119.18	End Shut-In(1)
100	53.98	118.56	Open To Flow (2)
137	59.97	119.44	Shut-In(2)
156	1173.31	120.41	End Shut-In(2)
157	2476.06	120.74	Final Hydro-static

Recovery

Length (ft)	Description	Volume (bbl)
15.00	DRILLING MUD	0.07

Gas Rates

	Choke (inches)	Pressure (psia)	Gas Rate (Mcf/d)



DRILL STEM TEST REPORT

FALCON EXPLORATION INC.
 125 NORTH MARKET SUITE 1252
 ATTN: DAVE WILLIAMS

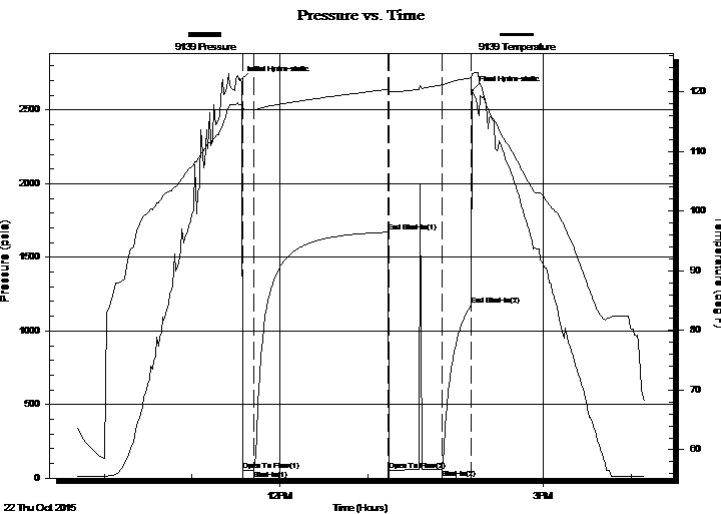
35-27S-30W GRAY
CHESTER-REXFORD 1-35
 Job Ticket: 01245 **DST#: 7**
 Test Start: 2015.10.22 @ 09:41:00

GENERAL INFORMATION:

Formation: **MISSISSIPPI-SALEM**
 Deviated: No Whipstock: ft (KB)
 Time Tool Opened: 11:35:00
 Time Test Ended: 16:09:00
 Interval: **5338.00 ft (KB) To 5378.00 ft (KB) (TVD)**
 Total Depth: 5378.00 ft (KB) (TVD)
 Hole Diameter: 7.88 inches Hole Condition: Fair
 Test Type: Conventional Bottom Hole (Initial)
 Tester: GENE BUDIG
 Unit No: 1
 Reference Elevations: 2805.00 ft (KB)
 2792.00 ft (CF)
 KB to GR/CF: 13.00 ft

Serial #: 9139 Outside
 Press@RunDepth: 1176.31 psia @ 5373.00 ft (KB) Capacity: 5000.00 psia
 Start Date: 2015.10.22 End Date: 2015.10.22 Last Calib.: 2015.10.22
 Start Time: 09:41:00 End Time: 16:09:30 Time On Btm: 2015.10.22 @ 11:33:00
 Time Off Btm: 2015.10.22 @ 14:11:30

TEST COMMENT: 1ST OPENING 7 MINUTES VERY WEAK SURFACE BLOW THROUGH OUT
 1ST SHUT-IN 90 MINUTES-NO BLOW BACK
 2ND OPENING 39 MINUTES-NO BLOW-FLUSHED TOOL-GOOD SURGE-NO HELP
 2ND SHUT-IN 20 MINUTES-NO BLOW BACK



PRESSURE SUMMARY

Time (Min.)	Pressure (psia)	Temp (deg F)	Annotation
0	2700.65	117.86	Initial Hydro-static
2	51.68	116.53	Open To Flow (1)
9	52.53	116.96	Shut-In(1)
101	1670.55	120.38	End Shut-In(1)
102	55.65	119.99	Open To Flow (2)
138	59.61	121.16	Shut-In(2)
158	1176.31	122.34	End Shut-In(2)
159	2631.80	123.02	Final Hydro-static

Recovery

Length (ft)	Description	Volume (bbl)
15.00	DRILLING MUD	0.07

Gas Rates

	Choke (inches)	Pressure (psia)	Gas Rate (Mcf/d)



DRILL STEM TEST REPORT

TOOL DIAGRAM

FALCON EXPLORATION INC.
 125 NORTH MARKET SUITE 1252
 ATTN: DAVE WILLIAMS

35-27S-30W GRAY
CHESTER-REXFORD 1-35
 Job Ticket: 01245 **DST#: 7**
 Test Start: 2015.10.22 @ 09:41:00

Tool Information

Drill Pipe:	Length: 5258.00 ft	Diameter: 3.80 inches	Volume: 73.76 bbl	Tool Weight: 2000.00 lb
Heavy Wt. Pipe:	Length: 0.00 ft	Diameter: 0.00 inches	Volume: 0.00 bbl	Weight set on Packer: 20000.00 lb
Drill Collar:	Length: 60.00 ft	Diameter: 2.25 inches	Volume: 0.30 bbl	Weight to Pull Loose: lb
			<u>Total Volume: 74.06 bbl</u>	Tool Chased 0.00 ft
Drill Pipe Above KB:	9.00 ft			String Weight: Initial 74000.00 lb
Depth to Top Packer:	5338.00 ft			Final 74000.00 lb
Depth to Bottom Packer:	ft			
Interval between Packers:	40.00 ft			
Tool Length:	69.00 ft			
Number of Packers:	2	Diameter: 6.75 inches		

Tool Comments:

Tool Description	Length (ft)	Serial No.	Position	Depth (ft)	Accum. Lengths
Shut In Tool	5.00			5314.00	
Hydraulic tool	5.00			5319.00	
Jars	7.00			5326.00	
Safety Joint	2.00		Fluid	5328.00	
Top Packer	5.00			5333.00	
Packer	5.00			5338.00	29.00 Bottom Of Top Packer
Anchor	35.00			5373.00	
Recorder	0.00	9119	Inside	5373.00	
Recorder	0.00	9139	Outside	5373.00	
Bullnose	5.00			5378.00	40.00 Anchor Tool
Total Tool Length:	69.00				



DRILL STEM TEST REPORT

FLUID SUMMARY

FALCON EXPLORATION INC.
 125 NORTH MARKET SUITE 1252
 ATTN: DAVE WILLIAMS

35-27S-30W GRAY
CHESTER-REXFORD 1-35
 Job Ticket: 01245 **DST#: 7**
 Test Start: 2015.10.22 @ 09:41:00

Mud and Cushion Information

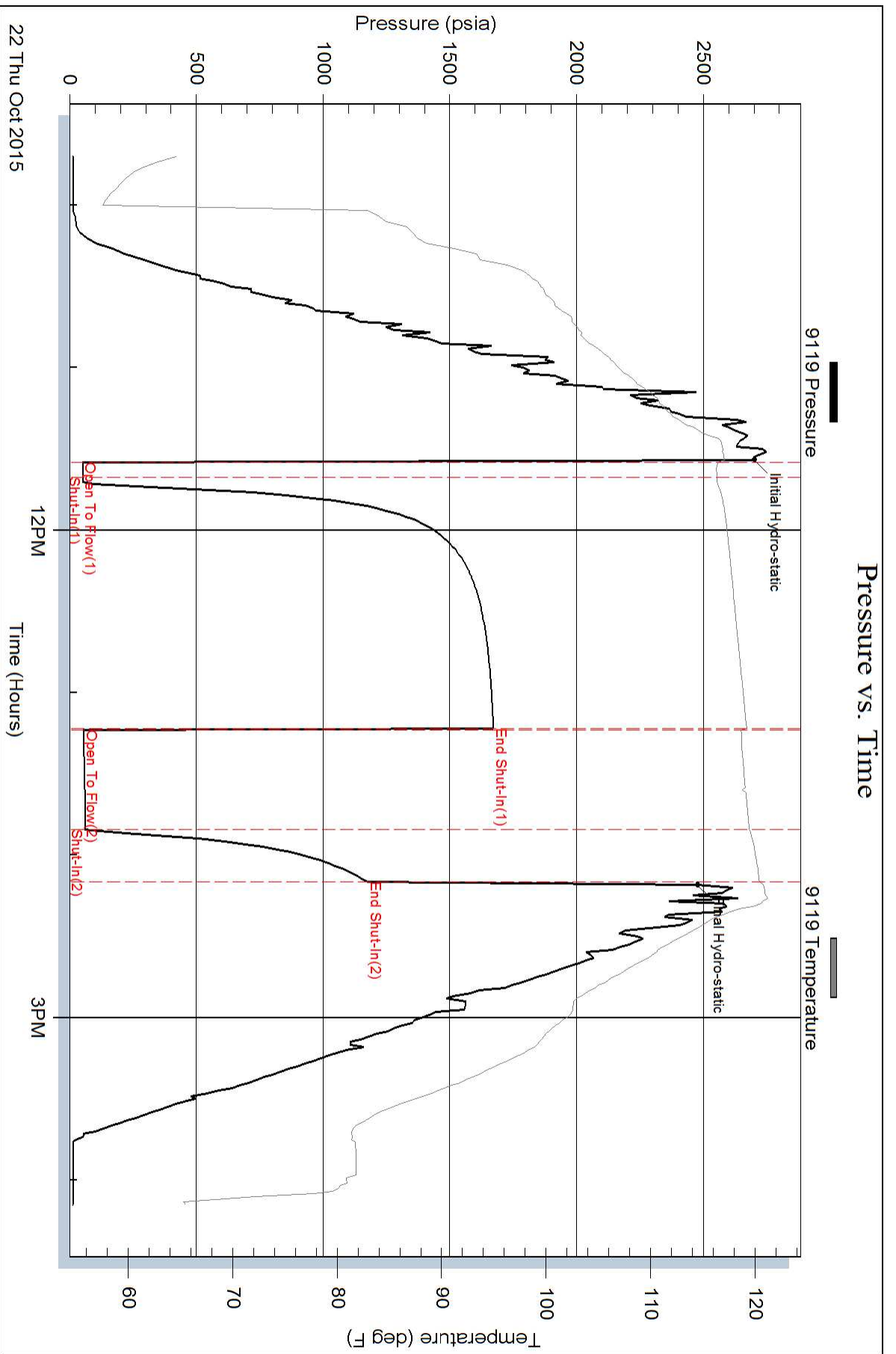
Mud Type: Gel Chem	Cushion Type:	Oil API:	deg API
Mud Weight: 9.00 lb/gal	Cushion Length: ft	Water Salinity:	ppm
Viscosity: 51.00 sec/qt	Cushion Volume: bbl		
Water Loss: 8.80 in ³	Gas Cushion Type:		
Resistivity: ohm.m	Gas Cushion Pressure: psia		
Salinity: 1900.00 ppm			
Filter Cake: 1.00 inches			

Recovery Information

Recovery Table

Length ft	Description	Volume bbl
15.00	DRILLING MUD	0.074

Total Length: 15.00 ft Total Volume: 0.074 bbl
 Num Fluid Samples: 0 Num Gas Bombs: 0 Serial #:
 Laboratory Name: Laboratory Location:
 Recovery Comments:



Pressure vs. Time

