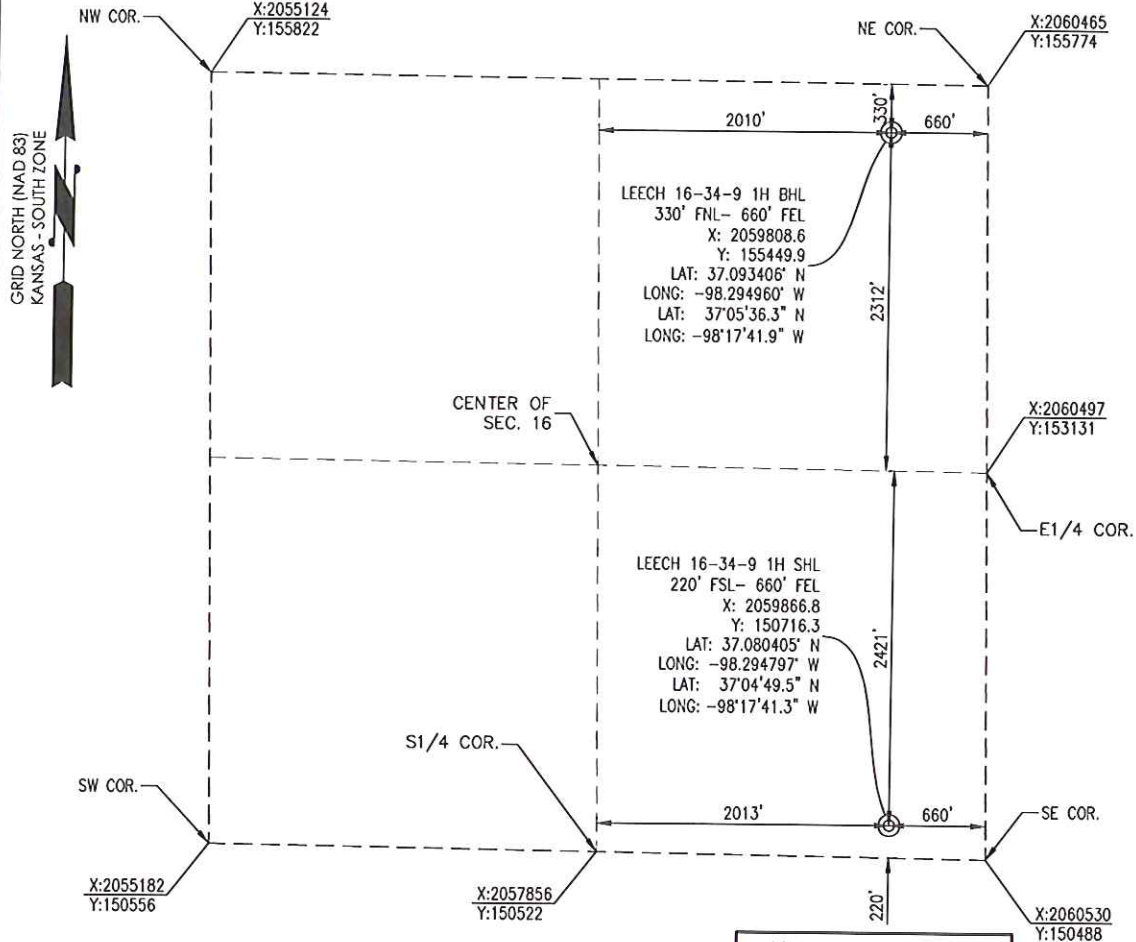




1000 LedgeLawn Drive
 Conway, Arkansas 72034
 501.328.3316 f 501.328.3325 f
 www.craftontull.com

Crafton Tull
 SURVEYING

HARPER COUNTY, KANSAS
 220' FSL- 660' FEL SECTION 16 TOWNSHIP 34S RANGE 09W 6TH P.M.



OPERATOR: TAPSTONE ENERGY

WELL NO: 1H

ELEVATION:
 1,282' GR. AT STAKE

LEASE NAME: LEECH 16-34-9

TOPOGRAPHIC & VEGETATION: LOCATION FELL IN A FIELD

GOOD DRILL SITE: YES REFERENCE STAKES OR ALTERNATE LOCATION STAKES SET: NONE

BEST ACCESSIBILITY TO LOCATION: SOUTH OR EAST LINE

DISTANCE & DIRECTION
 FROM HWY JCT OR TOWN: FROM THE JCT. OF STATE HWY 2 AND SW 140 AVENUE, TRAVEL SOUTH ON SW 140 AVENUE FOR APPROXIMATELY 4.98 MILES, TO THE JCT. OF SW 140 AVENUE AND SW 50 ROAD, TRAVEL WEST ON SW 50 ROAD FOR APPROXIMATELY 0.13 MILES.

(THE FOLLOWING INFORMATION WAS GATHERED USING A GPS RECEIVER ACCURACY ±2-3 METERS)

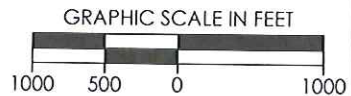
GPS DATUM: NAD-27
 LAT: 37.080405° N
 LONG: -98.294797° W

STATE PLANE COORDINATES:
 ZONE: KS-SOUTH NAD-27
 X: 2059866.8
 Y: 150716.3

DATE STAKED: 11-23-15

GENERAL NOTES:

THE TIES AND FOOTAGES SHOWN ON THIS PLAT ARE FROM LINES OF OCCUPATION FROM A SURVEY MADE ON THE GROUND AND / OR BEARING AND DISTANCES FROM THE GENERAL LAND OFFICE PLAT OF THE AREA SHOWN AND MAY NOT BE THE ACTUAL PROPERTY CORNERS. THIS PLAT DOES NOT REPRESENT A TRUE BOUNDARY SURVEY. DRILL SITE CONDITION DETERMINATIONS WERE MADE BY TAPSTONE ENERGY REPRESENTATIVES.



REVISION		
	"LEECH 16-34-9 1H" PART OF THE SE1/4 OF SECTION 16, T-34-S, R-09-W PROPOSED DRILL SITE HARPER COUNTY, KANSAS	
	SCALE: 1" = 1000'	DRAWN BY:
	PLOT DATE: 11-24-2015	LP SHEET NO.: 1 OF 5