



Casedhole Solutions

MICRO LOG

Company	MUSTANG ENERGY CORPORATION	Company	MUSTANG ENERGY CORPORATION
Well	DECHANT BROTHERS #2	Well	DECHANT BROTHERS #2
Field	SCHWEIN NORTHEAST	Field	SCHWEIN NORTHEAST
County	NESS	County	NESS
State	KANSAS	State	KANSAS
Location:	1870' SW & 630' NW NE - SW - NW - SW	Location:	AP# : 15-135-25691-00-00
Permitment Datum	SEC 2 TWP 20S RGE 22W	Permitment Datum	GROUND LEVEL Elevation 2254
Log Measured From	KELLY BUSHING 8' A.G.L	Log Measured From	KELLY BUSHING
Drilling Measured From	10-5-15	Drilling Measured From	ONE
Date	ONE	Date	ONE
Run Number	4500	Run Number	4500
Depth Logger	4500	Depth Logger	4500
Tool on Bit	3000	Tool on Bit	3000
Casing Driller	8.56 @ 221'	Casing Driller	8.56 @ 221'
Casing Logger	271	Casing Logger	271
Bit Size	7 7/8	Bit Size	7 7/8
Type Fluid in Hole	CHEMICAL MUD	Type Fluid in Hole	CHEMICAL MUD
Density / Viscosity	9.2/51	Density / Viscosity	9.2/51
pH / Fluid Loss	10.5/6.4	pH / Fluid Loss	10.5/6.4
Source of Sample	FLOWLINE	Source of Sample	FLOWLINE
Run @ Meas. Temp	0.95 @ 65F	Run @ Meas. Temp	0.95 @ 65F
Run @ Meas. Temp	1.11 @ 65F	Run @ Meas. Temp	1.11 @ 65F
Source of Rmt / Rmc	MEASUREMENT	Source of Rmt / Rmc	MEASUREMENT
Run @ BHT	0.67 @ 120F	Run @ BHT	0.67 @ 120F
Time Circulation Stopped	2 HOURS	Time Circulation Stopped	2 HOURS
Maximum Recorded Temperature	120F	Maximum Recorded Temperature	120F
Equipment Number	3802	Equipment Number	3802
Location	HAYS, KANSAS	Location	HAYS, KANSAS
Recorded By	IAN MABER	Recorded By	IAN MABER
Witnessed By	JEFF LAWLER	Witnessed By	JEFF LAWLER

<<< Fold Here >>>

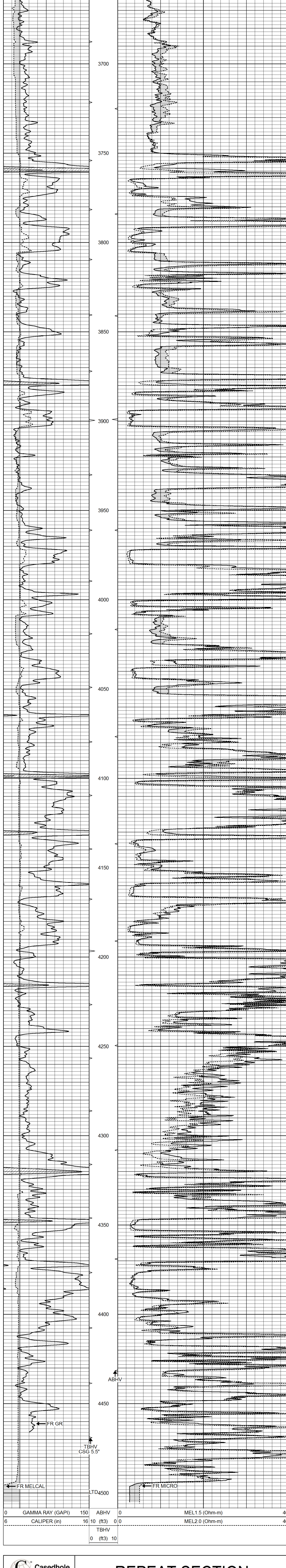
All interpretations are opinions based on inferences from electrical or other measurements and we cannot and do not guarantee the accuracy or correctness of any interpretation, and we shall not, except in the case of gross or willful negligence on our part, be liable or responsible for any loss, costs, damages, or expenses incurred or sustained by anyone resulting from any interpretation made by any of our officers, agents or employees. These interpretations are also subject to our general terms and conditions set out in our current Price Schedule.

Comments

THANK YOU FOR USING C & J CASEDHOLE SOLUTIONS, HAYS, KS. (785) 628-6395
DIRECTIONS : BAZINE, KS. - 2 MILES WEST TO RD BB - SOUTH 7 1/2 MILES - EAST INTO

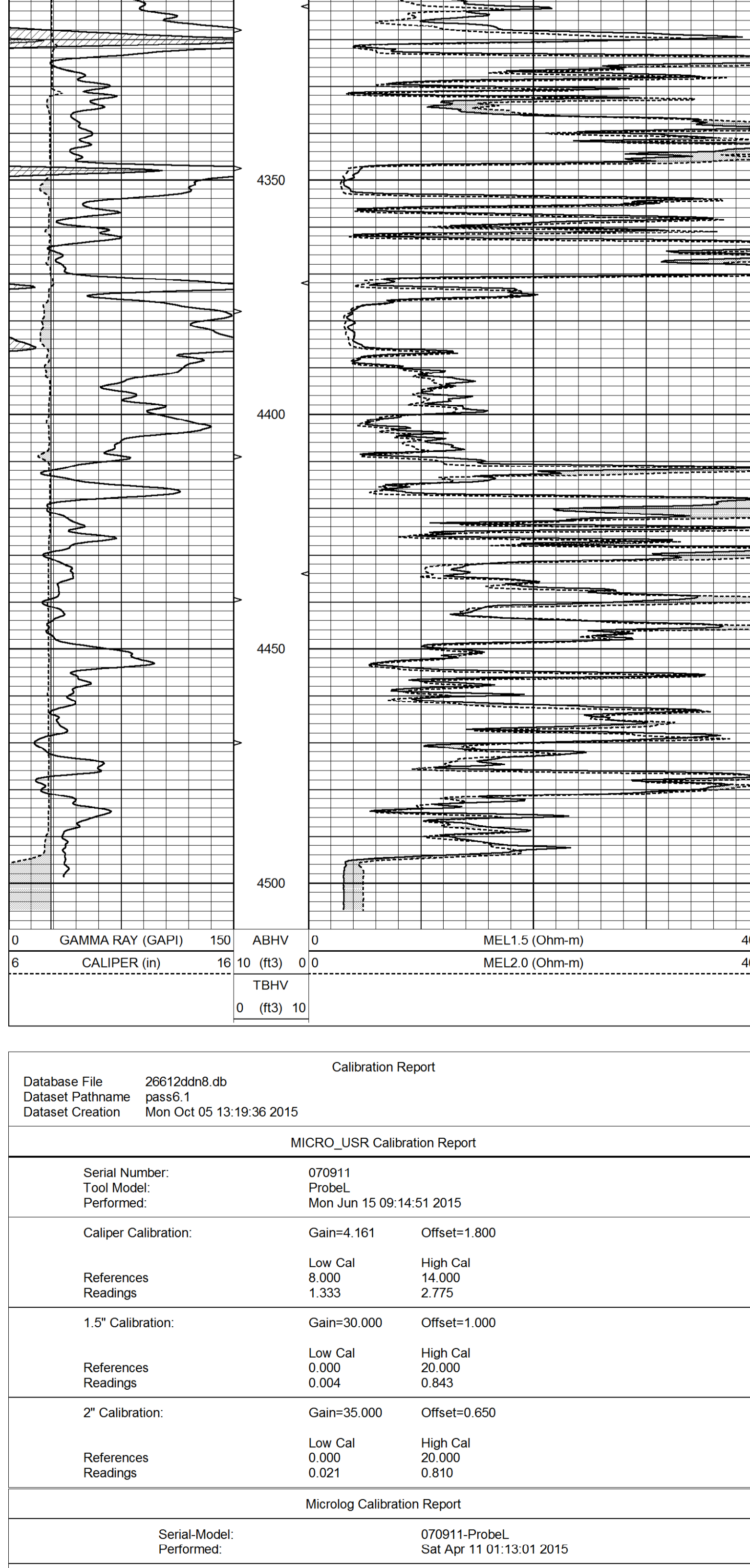
MAIN SECTION

Database File	26612ddn8.db
Dataset Pathname	pass6.2
Presentation Format	micro
Dataset Creation	Mon Oct 05 13:32:10 2015
Charted by	Depth in Feet scaled 1.240



REPEAT SECTION

Database File	26612ddn8.db
Dataset Pathname	pass5.1
Presentation Format	_micro
Dataset Creation	Mon Oct 05 13:00:42 2015
Charted by	Depth in Feet scaled 1.240



Calibration Report

Database File	26612ddn8.db
Dataset Pathname	pass6.1
Dataset Creation	Mon Oct 05 13:19:36 2015

MICRO_USR Calibration Report

Serial Number:	070911
Tool Model:	ProbeL
Performed:	Mon Jun 15 09:14:51 2015

Caliper Calibration:	Gain=4.161	Offset=1.800
References	Low Cal 8.000	High Cal 14.000
Readings	1.333	2.775

1.5" Calibration:	Gain=30.000	Offset=1.000
References	Low Cal 0.000	High Cal 20.000
Readings	0.004	0.843

2" Calibration:	Gain=35.000	Offset=0.650
References	Low Cal 0.000	High Cal 20.000
Readings	0.021	0.810

Microlog Calibration Report

Serial-Model:	070911-ProbeL
Performed:	Sat Apr 11 01:13:01 2015

	Readings		References		Results			
	Zero	Cal	Zero	Cal	m	b		
Normal	0.0002	0.4836	V	0.0000	10.0000	Ohm-m	20.6908	-0.0051
Inverse	0.0018	0.6297	V	0.0000	10.0000	Ohm-m	15.9263	-0.0282
Caliper	0.0000	1.0000	V	0.0000	1.0000	in	1.0000	0.0000

Gamma Ray Calibration Report

Serial Number:	7
Tool Model:	Probe1
Performed:	Thu Jan 01 09:43:47 2015

Calibrator Value:	1.0	GAPI
Background Reading:	0.0	cps
Calibrator Reading:	1.0	cps

Sensitivity:	0.5000	GAPI/cps
--------------	--------	----------