



Scale 1:240 Imperial

Well Name: Weddle 1-20  
 Surface Location: SE NE SW SE  
 Bottom Location:  
 API: 15-057-20965-0000  
 License Number: 5004  
 Spud Date: 9/22/2015 Time: 5:30 PM  
 Region: SW KS  
 Drilling Completed: 10/1/2015 Time: 3:53 PM  
 Surface Coordinates: 804 FSL & 1418 FEL  
 Bottom Hole Coordinates:  
 Ground Elevation: 2558.00ft  
 K.B. Elevation: 2571.00ft  
 Logged Interval: 4250.00ft To: 5360.00ft  
 Total Depth: 5360.00ft  
 Formation: MISS  
 Drilling Fluid Type: Chemical Mud

**OPERATOR**

Company: Vincent Oil Corporation  
 Address: 155 N Market  
 Ste. 700  
 Wichita KS 67202  
 Contact Geologist: Dick Jordan  
 Contact Phone Nbr: 316.262.3573  
 Well Name: Weddle 1-20  
 Location: SE NE SW SE  
 Pool:  
 State: KS  
 API: 15-057-20965-0000  
 Field: Minneola East  
 Country: USA

**CONTRACTOR**

Contractor: Duke Drilling Co., Inc.  
 Rig #: 1  
 Rig Type: Rotary  
 Spud Date: 9/22/2015 Time: 5:30 PM  
 TD Date: 10/1/2015 Time: 3:53 PM  
 Rig Release: 10/2/2015 Time: 12:00 PM

**ELEVATIONS**

K.B. Elevation: 2571.00ft Ground Elevation: 2558.00ft  
 K.B. to Ground: 13.00ft

**TOTAL DEPTH**

Measurement Type:	Measurement Depth:	TVD:
RTD	5360.00	5366.00
LTD	5366.00	5366.00

**SURFACE CO-ORDINATES**

Well Type: Vertical  
 Longitude: -99.9656544  
 N/S Co-ord: 804 FSL  
 E/W Co-ord: 1418 FEL

Latitude: 37.5036385

### DRILLING FLUID SUMMARY

Type	Date	From Depth	To Depth
Chemical Mud	10/5/2015	3760.00ft	5360.00ft

### CASING SUMMARY

	Surface	Intermediate	Main		
Bit Size	12.25 in				
Hole Size			7.88 in		
	Size	Set At	Type	# of Joints	Drilled Out At
Surf Casing	8.625 in	645 ft	#23	15	9/23/2015 8:00 AM
Int Casing					
Prod Casing					

### CASING SEQUENCE

Type	Hole Size	Casing Size	At
Surface	12.25 in	8.63	645.00 ft

### OPEN HOLE LOGS

Logging Company: CJ Casedhole Solutions  
 Logging Engineer: Jeff Luebbers  
 Truck #: 22339  
 Logging Date: 10/1/2015  
 # Logs Run: 4

Time Spent: 6  
 # Logs Run Successful: 4

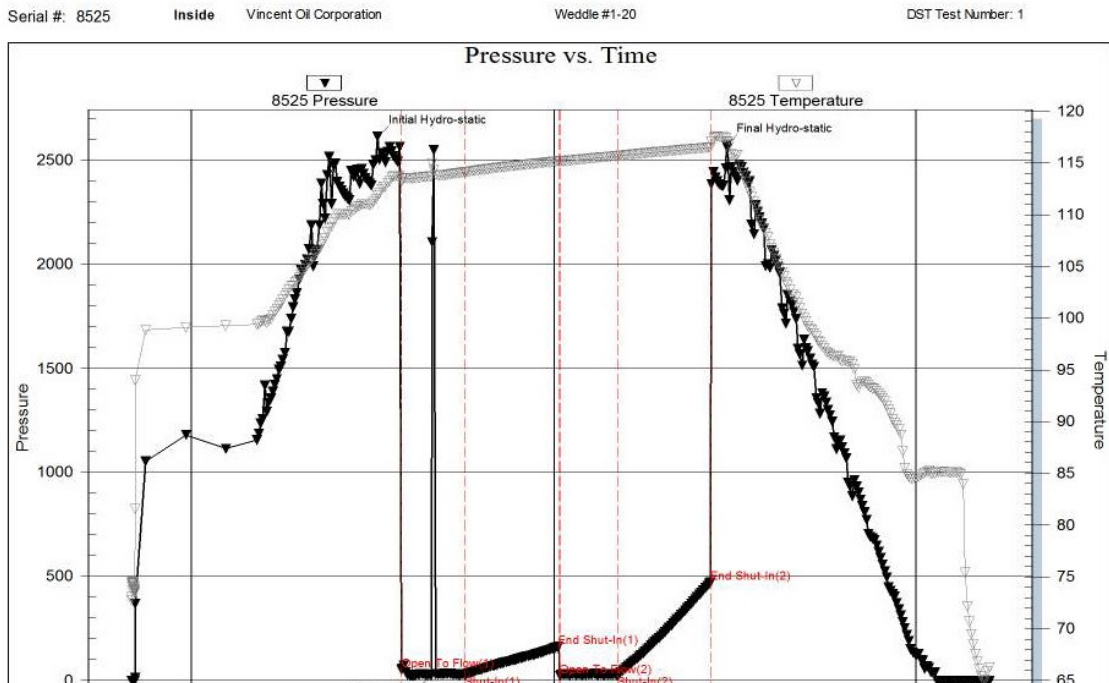
### LOGS RUN

Tool	Logged Interval	Logged Interval	Hours	Remarks	Run #
Dual Induction	645.00ft	5366.00ft	2.00		1
DEN/NEU/PE	4200.00ft	5366.00ft	2.00		1
Micro	4200.00ft	5366.00ft	2.00		2
Sonic	0.00ft	5366.00ft	2.00		2

### LOGGING OPERATION SUMMARY

Date	From	To	Description Of Operation
10/5/2015	0.00ft	5366.00ft	Logs Ran Successfully

### DST #1





Trilobite Testing, Inc

Ref. No: 57910

Printed: 2015.10.01 @ 14:52:04

### DST #2

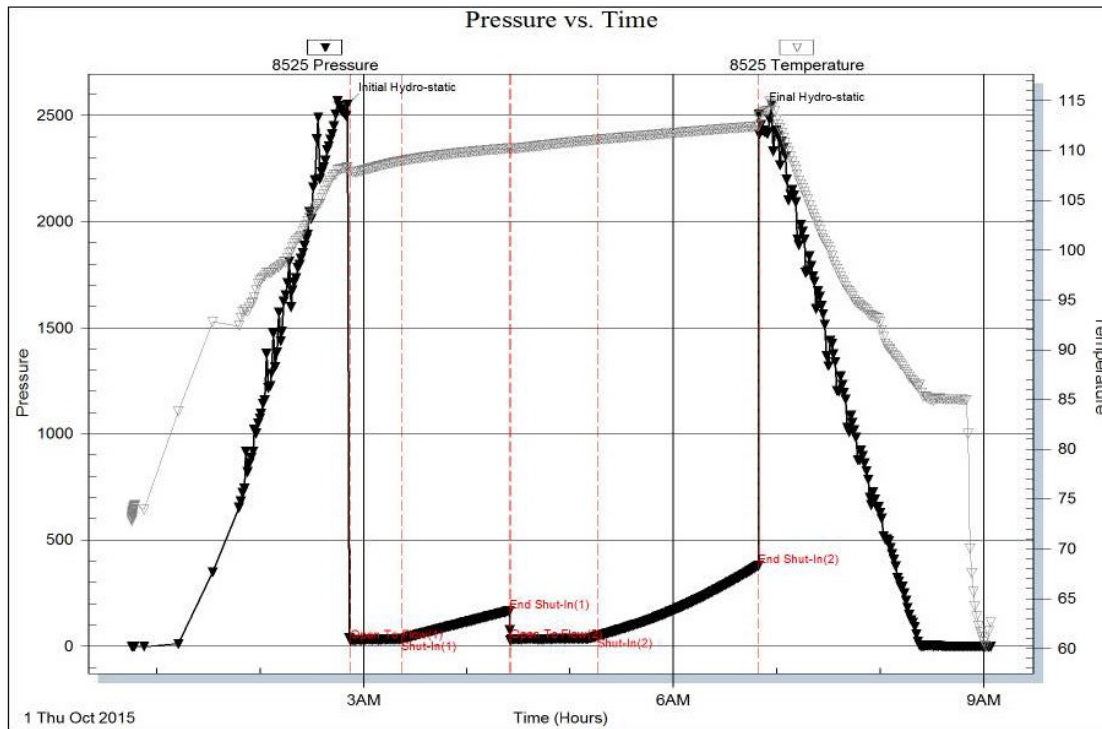
Serial #: 8525

Inside

Vincent Oil Corporation

Weddle #1-20

DST Test Number: 2

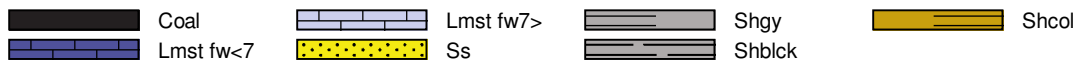


Trilobite Testing, Inc

Ref. No: 57911

Printed: 2015.10.01 @ 14:50:55

### ROCK TYPES



### ACCESSORIES

#### MINERAL

- ⊥ Calcareous
- Carbonaceous Flakes
- ▲ Chert, dark
- ∩ Glauconite
- Heavy, dark minerals
- P Pyrite
- ∕ Euhed rhombs of dol or
- △ Chert White

#### FOSSIL

- ∩ Bioclastic or Fragmental
- ∩ Brachiopod
- Crinoids
- ∩ Echinoid
- F Fossils < 20%
- φ Oolite

#### STRINGER

- ▬ Limestone
- ▬ Shale

#### TEXTURE

- C Chalky
- FX Finexln
- MX Microxln

#### DUNHAM

- MS Mudst
- PS Packst
- WS Wackstone

#### MISC

- ∕ Fractures
- ▬ Veins

### OTHER SYMBOLS

#### POROSITY TYPE

- x Intercrystalline
- φ Interoolitic
- V Vuggy
- P Pinpoint
- ∕ Moldic
- O Organic
- F Fracture
- e Earthy
- Fenestral

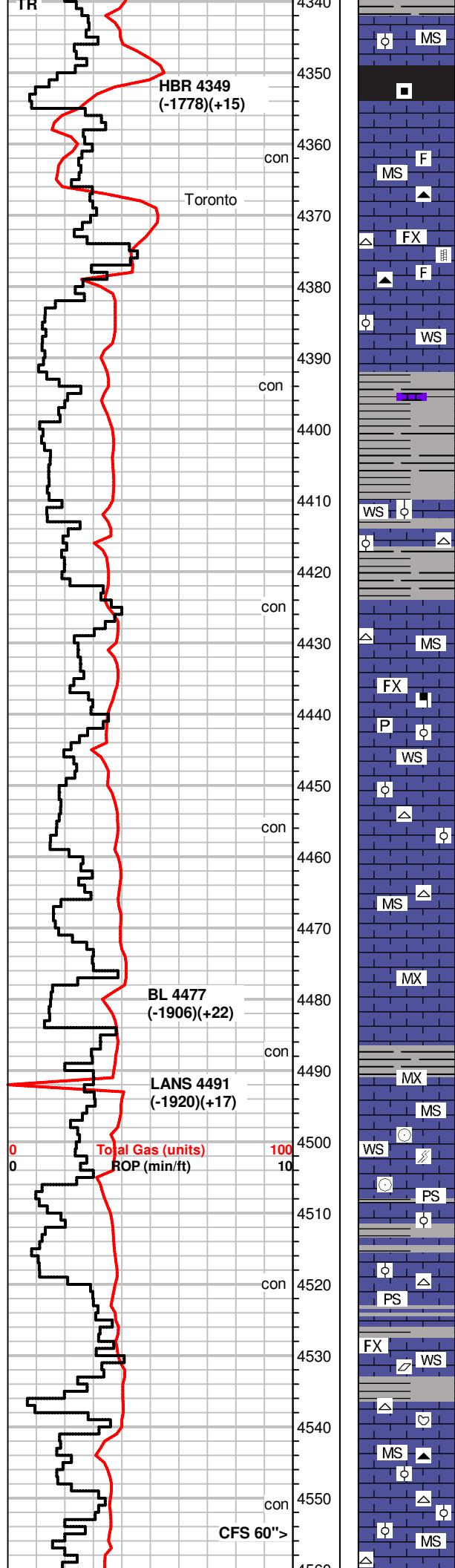
#### OIL SHOWS

- Even Stn
- Spotted Stn 50 - 75 %
- Spotted Stn 25 - 50 %
- Spotted Stn 1 - 25 %
- Questionable Stn
- D Dead Oil Stn
- Fluorescence

#### INTERVALS

- Core
- ∙ DST

ROP (min/ft)	Depth   Intervals Cored Interval DST Interval	Porosity Types	Interpreted Litho	Oil Shows	Geological Descriptions	Comment
1:240 Imperial	4150					
0 0	100 10				<p>GEO on location @ 11:30 AM 9/27/2015 Bloodhound Gas Unit # 5259 provided by Bluestem Labs</p>	
	4160 4170 4180 4190 4200 4210 4220 4230				<p>KEY con = connection point 50 Mud Viscosity 9.1 Mud Weight 2# Mud LCM content</p>	
0 0	100 10		<p>MS WS C WS FX WS F</p>		<p>MS-WS, crm to lt. tan, m-xln in part, some pcs oolitic, granular txt, chalky matrix, pcs vitreous, co. gr. calcite inclusions, oomoldic por., no fluor, NS, scatt Chert, blk, tan Rare blk, green SH</p>	
	4240		<p>MS WS C WS FX WS F</p>		<p>MS-WS, A.A., inc amount of tan pcs, f-xln, fossilif Chert, white SH, gray</p>	
	4250		<p>MS WS C WS FX WS F</p>		<p>MS, crm to tan, t-xln, micro oolitic, glauc specs, scatt dark minerals, barren, NS SH, gray</p>	
	4260		<p>MS WS C WS FX WS F</p>		<p>MS, crm, A.A., chalky in part, scatt fossils, NS rare green SH</p>	
	4270		<p>MS WS C WS FX WS F</p>		<p>MS, crm to tan, f-xln, micro oolitic, glauc specs, dark minerals. Scatt gray SH</p>	
	4280		<p>MS WS C WS FX WS F</p>		<p>MS, crm to lt. gray, mic xln, dense, some hard, scatt oolitic pcs, shaly in part</p>	
	4290		<p>MS WS C WS FX WS F</p>		<p>MS-WS, crm to brn, f-xln, some chalky, firm to hard, NS SH, gray, dk. gray</p>	
	4300		<p>MS WS C WS FX WS F</p>		<p>SH, gray, blk, rare green</p>	<p><b>Shale Gas</b></p>
	4310		<p>MS WS C WS FX WS F</p>			
	4320		<p>MS WS C WS FX WS F</p>			
	4330		<p>MS WS C WS FX WS F</p>			
53 9.2	4340		<p>MS WS C WS FX WS F</p>			



MS, tan to crm, f-xln, cahlky, hard to firm, some oolitic, fossilif, NS

SH, blk, carbonaceous, some gray, silty in part

MS, crm, f-xln to mic-xln, dense, hard, NS

MS, gray to crm, f-xln, hard, scatt fossils, calcite veins  
Chert, blk, wihite, mottled colors

MS-WS, crm to lt. gray, f-xln, to mic-xln, sub oolitic, fossils  
SH, blk, gray

SH, dk. gray, blk

MS-WS, crm to off white, some tan, f-xln, firm to hard, micro oolitic,  
scatt chalky pcs,  
Chert, white

MS-WS, off white to gray, f-xln, silty in part, firm, NS  
Chert, white  
SH, gray

MS-WS, gray to lt. brn, some crm, micro to f-xln, dense, some silty,  
pyrite, dark minerals, scatt ooids, rare fossils  
scatt SH, gray to red, some blk

MS-WS, A.A, rare Chert, white  
SH, gray, brn, green, silty

MS, gray to crm, chalky, f-xln, firm, rare oolitic pcs, f-gr.,  
SH, blk, gray, green

MS, crm to brn, mic-xln, dense, firm, NS

SH, gray, green

MS, crm to lt. gray, f to mic-xln, chalky in part, dense, hard, NS

WS-PS, ray to crm, mic-xln, dense, scatt fossils, some pcs brittle,  
fractured, gritty txt in part, fossilif(crinoids)  
SH, gray, silty, green

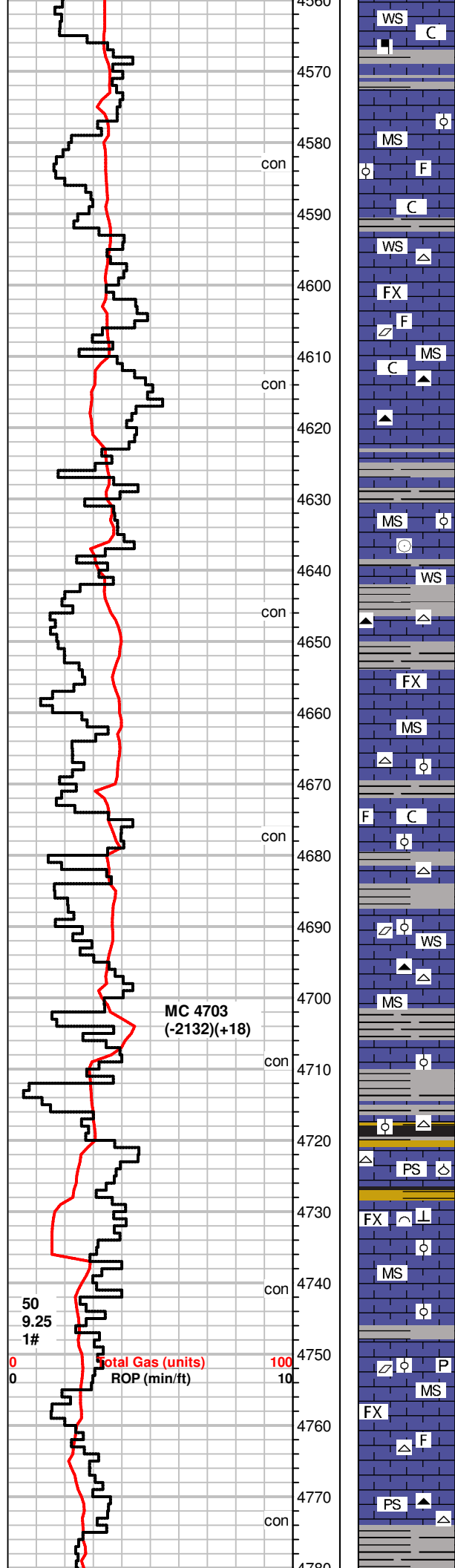
WS-PS, crm to off white, some lt. gray, mic-xln, hard, some pcs  
chalky, oolitic, Chert, white

MS-WS, crm to gray, scatt brn pcs, mic to f-xln, dense, oolitic,  
fossilif pcs throughout, rare calcite crystals on edge  
Chert, tan

MS, crm to lt. gray, f-xln, chalky, firm, fossilif,  
Scatt SH, grays  
Chert, white, brn, opaque, spicules, oolitic

MS-WS, crm to lt. gray, scatt brn, f-xln oolitic, micro to co gr.,  
fossilif, hard, 60 min-dull fluor, no odor, no gas inc. NS  
Chert, white, opaque, fossilif.

Shale Gas



MS, crm to gray, mic-xln, some chalky, scatt heavy minerals, fossilif.  
Chert, tan, fossilif.  
some SH, gray

MS-WS, crm to tan, f-xln, chalky matrix in part, oolitic, fossilif., dense, NS

WS, gray to crm, f-xln, partially chalky, firm to hard, friable/fractured  
Chert, white  
Scatt SH, gray, brn

MS-WS, tan to brn, scatt brn, f-xln, chalky matrix, most pcs tite, dense, fossilif, calcite on edge, dull fluor, NS  
Chert, blk

MS-WS, crm to gray, f- to m-xln, granular txt, dense, fossilif.  
SH, gray

MS, gray to crm, f-xln, sub oolitic, hard, dense, some pcs silty, fossilif (crinoids)

MS-WS, crm to lt. gray, mic-xln, massive txt, dense, some pcs shaly, rare fossils, Chert, gray translucent,  
SH, brn, gray, fossils, rare dk. gray

MS, gray, f-xln, dense, hard, NS  
Chert, tan

SH, blk, gray  
MS, crm to gray, f-xln, chalky txt, some gritty/silty, fossilif, micro oolitic pcs rare, rare dead stn  
Chert, white, fossilif.

SH, blk, gray  
MS-WS, brn to crm, f to m-xln, firm, calcite inclusions, fossilif., silty in part, some chalky matrix.  
Chert, bluish-white, micro oolitic

SH, blk, dk. gray, carb.

SH, A.A, gray, some pyrite  
MS, crm to off white, f-xln, oolitic, m-gr ooids, fossilif, friable, Chert, white, opaque, fossilif.

PS-WS, crm to brn, mic to f-xln, hard to firm, fossilif (brachs, crinoids, fusilinids), tite calcite cement  
Scatt SH, blk gray, green, waxy

MS, gray to crm, chalky txt, some mic-xln, dense, most pcs hard, rare crip-xln, dense, micro oolitic, dull fluor, NS

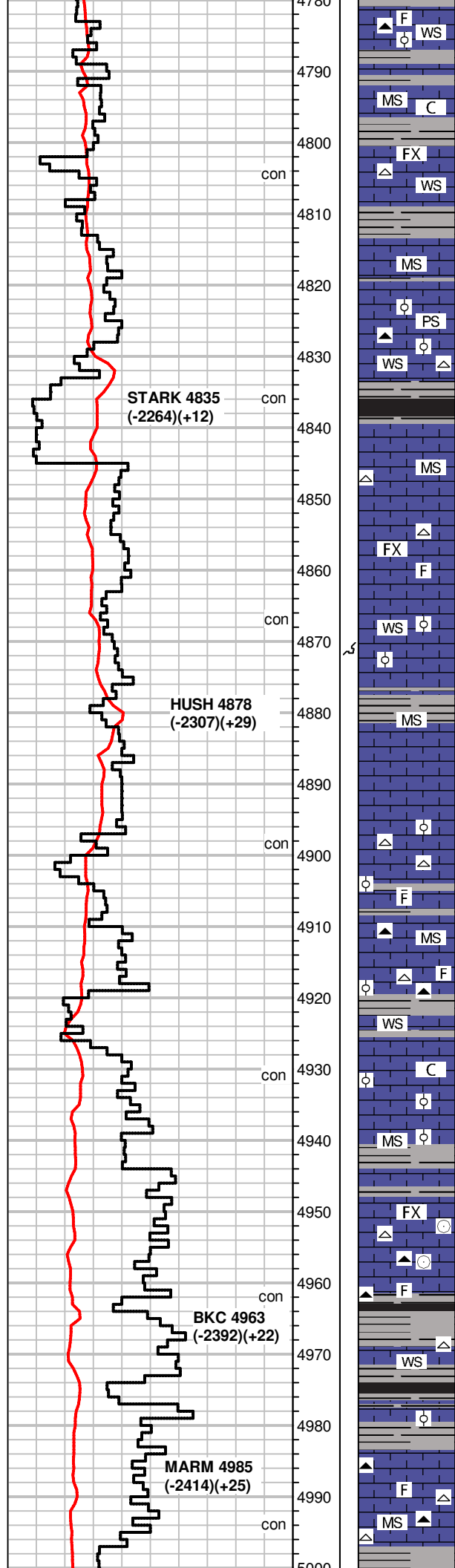
MS-WS, crm to gray, f-xln, firm to hard, fossilif, m-gr oolitic, some w/ dark rings, scatt pyrite, calcite  
SH gray, green

WS, crm to lt. tan, f-xln to chalky txt, fossilif. A.A., Chert, gray  
Scatt SH, gray

WS-PS, A.A., Chert, gray, white, fossils  
Scatt SH, gray green, blk

**+14 UGK Shale Gas**





MS-WS, crm, vf to mic-xln, firm, chalky, some fossilif pcs, NS  
 Chert, brn, fossilif.  
 SH, green-gray, sli. silty

MS-WS, crm to tan, gray, mostly chalky, scatt oolitic pcs, soft to firm, rare mottled pcs, NS  
 Scatt SH, brn, gray, red

MS-WS, crm, chalky to f-xln, soft to firm, Chert, tan  
 some SH, red, green, waxy to silty

MS, crm to lt. gray, f-xln, some massive to crip-xln, soft, fossilif  
 Chert, gray, fossils  
 SH, gray, green

WS-PS, crm to tan, f to mic-xln, firm to soft, oolitic, shaly

WS-PS, AA, some glauc, moldic por., Chert, white, gray, fossils

SH, blk, gray, waxy green, gas bubbles, carbonaceous

MS-WS, crm to off white, chalky, soft, NS  
 Chert, white tan, fossilif

MS, off white to crm, f-xln, chalky in part, soft, scatt fossils, NS

MS-WS, crm to gray, f-xln, chalky in part, A.A., m-gr oolitic, moldic por.  
 some SH, gray green

SH, blk, gray, green, silty

MS-WS, crm, chalky matrix, soft, oolitic in part, m-gr., NS

MS, crm to brn, mic-xln, hard to firm, dense, NS  
 scatt SH A.A

MS, crm to lt. gray(rare), f-xln, silty txt, some pcs oolitic/fossilif,  
 scatt chalky pcs(caving?), Chert, milky white, fossils  
 SH, gray, green

WS-PS, gray to scatt crm, mic-xln, firm, oolitic, fossilif in part,  
 Abundance of Chert, white, blk, fossilif.  
 scatt SH, grays

WS, A.A., increase in crm pcs, sli. chalky matrix. NS

MS, crm to gray, mic-xln, some pcs chalky, scatt f-gr oolitic, friable,  
 firm, NS  
 Chert, blk, gray  
 scatt SH, gray, rare blk

MS, gray to crm, f-xln, firm, friable, scatt fossils(crinoids), Chert,  
 tan, white, gray, scatt SH, blk, gray, limy in part

SH, gray to crm, brn, MS, gray, f-xln, silty in part, scatt fossils,  
 Chert, blk, white

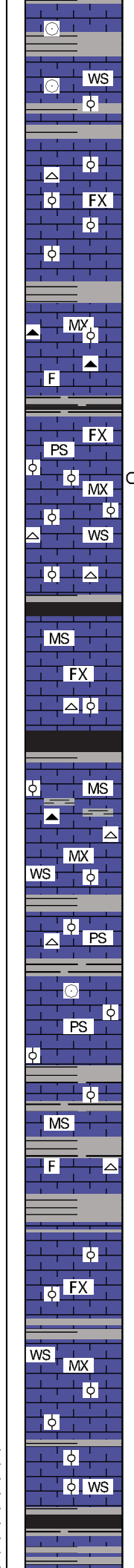
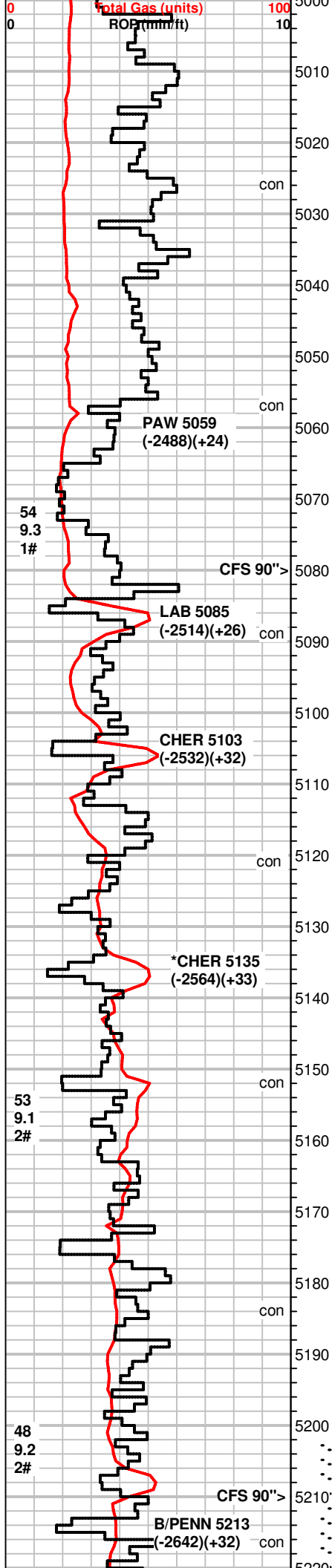
MS-WS, crm to gray, f-xln, sub oolitic/fossilif, gritty txt  
 SH, dk. gray, gray, Chert, white, blk

MS, crm to gray, f-xln, A.A., Chert, white, blk  
 Scatt SH, gray, green

MS-WS, gray, brn, crm, f-xln, hard to firm, fossils, some silty in  
 part, Chert, white, brn, blk, fossils  
 SH, dk. gray, red

**+8 UGK Shale Gas**

**+10 UGK Shale Gas**



MS, crm to brn, rare gray, crip-xln to chalky txt, soft, rare crinoids, rare mottled pcs, SH, gray, blk, green, decreasing amt.

WS, crm to gray, some brn, mic to crip-xln, firm to hard, sub oolitic, dull fluor, NS  
scatt SH, gray/green striated, brn

MS-WS, crm to tan, rare lt. gray, mic-xln, firm to hard, chalky in part, sub oolitic, some glauc, some pcs dense, NS  
Chert, white, rare

MS-WS, A.A., rare oolitic PS,

MS-WS, inc in lt. gray pcs, f-xln firm, most A.A.  
scatt SH, gray

MS, WS-PS, crm to tan, scatt lt. gray, mic to f-xln, fossilif, suboolitic, waxy, some pcs weathered looking Chert, tan, blk,

SH, blk, gray green, silty, gas bubbles in blk pcs

WS-PS, crm to tan, f to mic-xln, oolitic, fossilif, ringed ooids, co-gr. **mineral fluor, light edge stn-dead, no odor, no cut, no show**

MS-WS, crm to brn, mic-xln, some chalky, suboolitic, hard to firm, NS  
Chert, white

SH, blk, gray, carb., pyrite

MS-WS, crm to off white, some brn, f-xln to chalky, firm to soft, suboolitic,

MS, crm to brn, f-xln, hard, dense, some chalky, scatt suboolitic pcs, Chert, white

SH, blk, gray, rare gas bubbles

MS, crm to tan, mic to f-xln, firm to hard, scatt dense pcs, fossilif, sub oolitic, dull fluor, NS  
Chert, white, gray, Scatt SH, gray, blk

WS-PS, crm to tan, some gray, mic-xln, m to co-gr oolitic, some ringed, firm, chalky matrix, Chert, brn  
SH, blk gray

WS-PS, crm to tan, inc in gray pcs, A.A. fossilif, crinoids  
Chert, white, tan, oolitic, fossilif.

Scatt SH, gray, blk

WS-PS, crm to brn, scatt lt. gray, mic-xln, oolitic, fossils, hard to firm, dull fluor, NS

SH, blk, dk .grays, WS-PS, A.A., silky/waxy looking, Chert, white

MS-WS, crm to gray, some brn, f-xln to mic-xln, scatt oolites, m-gr, some ringed, Chert, white, fossils  
Scatt SH, gray, blk

SH, dk. gray to brn  
MS, crm to brn, mic-xln, firm, some dense, scatt oolitic pcs, fossils

MS-WS, rare PS, crm to gray, f-xln, silty, soft, friable, fossilif, rare oolitic pcs  
Scatt SH, gray, blk

MS-WS, crm to tan, gray A.A., f-xln, tite calcite cement in rare PS, some pcs chalky,

MS, crm to brn, mic-xln, dense, hard, suboolitic, dull fluor, NS  
Scatt SH, dk. gray, gray

PS-WS, brn to crm, some gray, mic-xln, scatt chalky, hard to firm, dense pcs, oolitic, m-gr ooids fossils, lt. edge stn in 30" dry sample, dull fluor, NS  
Scatt SH, blk, gray, silty

Scatt MS-WS, crm to gray, hard to firm, mic-xln, NS

**+5 UGK Shale Gas**

**+30 UGK Shale Gas**

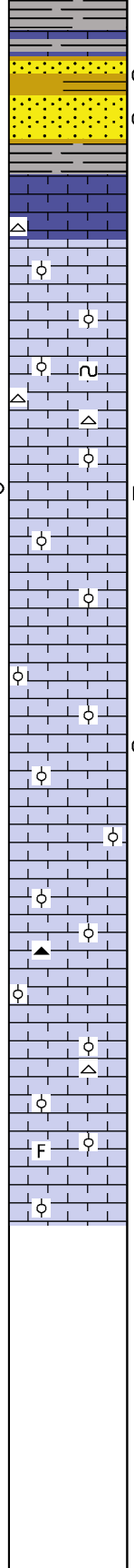
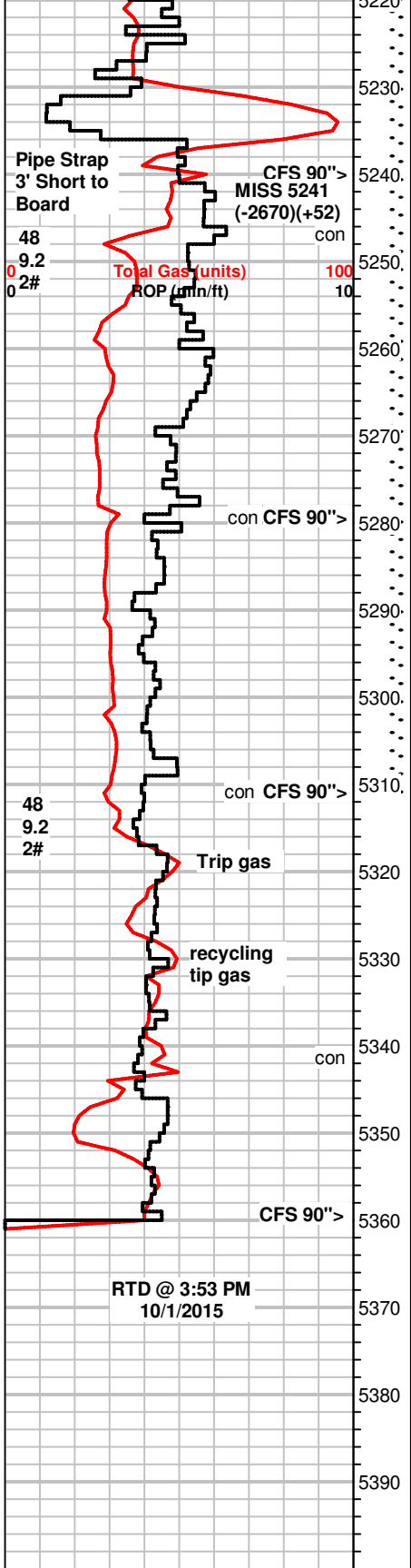
**+28 UGK Shale Gas**

**+18 UGK Shale Gas**

**DST #1 5202-5240  
30-45-30-45  
WB 1.5inch, dead @ 15",  
flushed tool, NB  
WB 1.5inch  
Rec: 5' Mud  
IH 2612#  
IF 52-28#  
ISIP 164#  
FF 23-27#  
FSIP 470#  
FH 2570#  
Temp 117°F**

**+17 UGK, +5 Unit recycle**





SH blk, gray, green, red

Scatt SS clusters, green, well sorted, friable,, NS

SS clusters, brn, grn, f-gr, well sorted, friable, rare co Qtz gr. loose in tray, faint odor, partial stain, scatt bright flour, inst cut some select pcs,

SH, gray, green, blk, some scatt red, arenaceous, SS clusters A.A., tight, some w/ calcite cement  
MS-WS, crm to brn, mic-xln, dense, sub oolitic pcs rare PS, off white, firm, crip-xln, oolitic, glauc specs

SH, A.A., SS clusters, A.A., some red  
PS-WS, crm to off white, f-xln, firm, oolitic, f to m-gr ooids, scatt glauc, friable, some pcs w/ chalky matrix, some brn WS-MS, f-xln, dense, scatt.fossils  
Chert, orange-opaque, fossils(echnoid spikes?)

WS-PS, off white to crm, f-xln, firm to friable, oolitic, some pcs sandy in apperance, scatt pcs moldic, dull fluor, NS, lt. edge strn in very few dry pcs.

WS-PS, off white to crm, some pcs brn, m-gr oolitic throughout, chalky matrix in some pcs, hard to firm, dull fluor, NS

WS-PS, off white to crm scatt brn, f-xln, oolitic, firm, some pcs dense/hard, NS

PS, off white to crm, f-xln, oolitic, m-gr, firm, rare bright fluor(4pcs), residual cut(1 pc), no odor  
diminishing shows in 60 & 90min samples

WS-PS, crm to off white, mic-xln to chalky, suboolitic to oolitic, f to m-gr ooids, tite calcite cement, no vis por., some pcs with weathered looking edges(sli dolomitized?), NS

PS-WS, crm to off white, scatt brn pcs, mic-xln, hard, f to m-gr concentric ooids, dull fluor, NS  
rare Chert, gray

PS, brn, to crm, f-xln to mic-xln, dense, sub oolitic, scatt fossils, rare Chert, white

PS, crm to brn, off white, crip-xln, dense, hard, oolitic, A.A., dull fluor, NS

WS-PS, off white to crm, crip-xln, dense, scatt oolitic pcs, some w/ chalky matrix, fossilif., NS, carrying lots of shales

**+60 UGK,**  
**+18 unit recycle**  
  
**DST #2 5202-5311**  
**30-60-45-90**  
**WB 1.5 inch**  
**WB 2.5 inch**  
**Rec: 20' Mud**  
**IH 2551#**  
**IF 25-32#**  
**ISIP 166#**  
**FF 27-47#**  
**FSIP 379#**  
**FH 2504#**  
**Temp 113°F**