



DRILL STEM TEST REPORT

Prepared For: **SHELBY RESOURCES L.L.C.**

621 17 th STREET SUITE 1155
DENVER, COLORADO 80293

ATTN: JEREMY SCHWARTZ

L S UNIT 1-15

15-18S-14W BARTON

Start Date: 2015.12.04 @ 18:12:00

End Date: 2015.12.04 @ 00:00:00

Job Ticket #: 01201 DST #: 2

Eagle Testers
1309 Patton Road Great Bend, Kansas 67530
620-791-7394

Printed: 2015.12.04 @ 22:26:22



DRILL STEM TEST REPORT

SHELBY RESOURCES L.L.C.

15-18S-14W BARTON

621 17 th STREET SUITE 1155
DENVER, COLORADO 80293

L S UNIT 1-15

Job Ticket: 01201

DST#: 2

ATTN: JEREMY SCHWARTZ

Test Start: 2015.12.04 @ 18:12:00

GENERAL INFORMATION:

Formation: **KANSAS CITY 'H**

Deviated: No Whipstock: ft (KB)

Time Tool Opened: 19:32:00

Time Test Ended: 00:00:00

Test Type: Conventional Bottom Hole (Initial)

Tester: GENE BUDIG

Unit No: 1

Interval: **3294.00 ft (KB) To 3334.00 ft (KB) (TVD)**

Reference Elevations: 1934.00 ft (KB)

Total Depth: 3334.00 ft (KB) (TVD)

1923.00 ft (CF)

Hole Diameter: 7.88 inches Hole Condition: Fair

KB to GR/CF: 11.00 ft

Serial #: 9119 Inside

Press@RunDepth: 50.47 psia @ 3329.00 ft (KB)

Capacity: 5000.00 psia

Start Date: 2015.12.04

End Date: 2015.12.04

Last Calib.: 2015.12.04

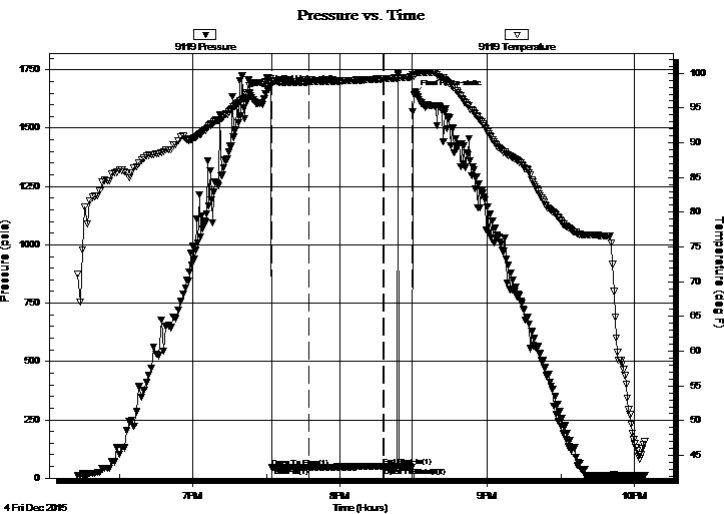
Start Time: 18:13:00

End Time: 22:04:00

Time On Btm: 2015.12.04 @ 19:31:00

Time Off Btm: 2015.12.04 @ 20:30:00

TEST COMMENT: 1ST OPENING 15 MINUTES WEAK SURFACE BLOW FOR 12 MINUTES AND DIED
1ST SHUT-IN 30 MINUTES NO BLOW BACK
2ND OPENING 13 MINUTES- NO BLOW FLUSHED TOOL GOOD SURGE NO HELP CAME OUT OF THE HOLE NO FINAL SHUT-IN TAKEN



PRESSURE SUMMARY

Time (Min.)	Pressure (psia)	Temp (deg F)	Annotation
0	1666.23	99.29	Initial Hydro-static
1	47.50	98.88	Open To Flow (1)
16	46.96	98.76	Shut-In(1)
47	50.47	99.19	End Shut-In(1)
47	48.35	99.20	Open To Flow (2)
58	47.03	99.45	Shut-In(2)
59	1644.97	99.61	Final Hydro-static

Recovery

Length (ft)	Description	Volume (bbl)
5.00	SLIGHTLY OIL CUT MUD 10 OIL 90 MUD	0.02

Gas Rates

Choke (inches)	Pressure (psia)	Gas Rate (Mcf/d)



DRILL STEM TEST REPORT

SHELBY RESOURCES L.L.C.

15-18S-14W BARTON

621 17 th STREET SUITE 1155
DENVER, COLORADO 80293

L S UNIT 1-15

Job Ticket: 01201

DST#: 2

ATTN: JEREMY SCHWARTZ

Test Start: 2015.12.04 @ 18:12:00

GENERAL INFORMATION:

Formation: **KANSAS CITY 'H**

Deviated: No Whipstock: ft (KB)

Time Tool Opened: 19:32:00

Time Test Ended: 00:00:00

Test Type: Conventional Bottom Hole (Initial)

Tester: GENE BUDIG

Unit No: 1

Interval: **3294.00 ft (KB) To 3334.00 ft (KB) (TVD)**

Reference Elevations: 1934.00 ft (KB)

Total Depth: 3334.00 ft (KB) (TVD)

1923.00 ft (CF)

Hole Diameter: 7.88 inches Hole Condition: Fair

KB to GR/CF: 11.00 ft

Serial #: 9139 Outside

Press@RunDepth: 50.00 psia @ 3329.00 ft (KB)

Capacity: 5000.00 psia

Start Date: 2015.12.04

End Date:

2015.12.04

Last Calib.:

2015.12.04

Start Time: 18:13:00

End Time:

22:04:00

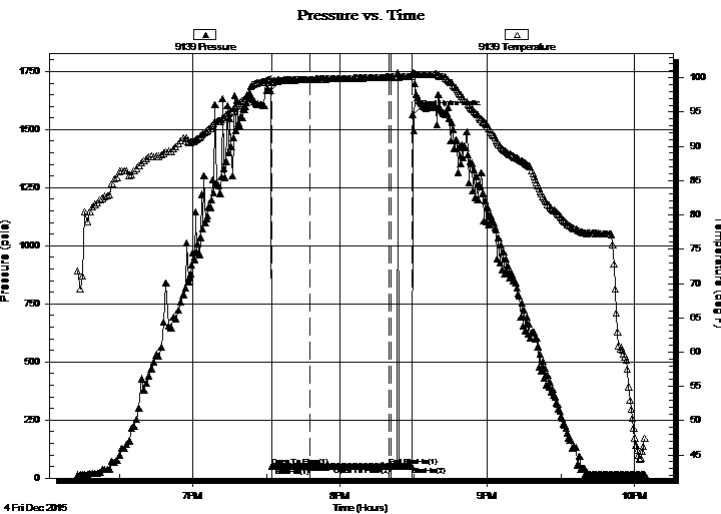
Time On Btm:

2015.12.04 @ 19:31:30

Time Off Btm:

2015.12.04 @ 20:29:30

TEST COMMENT: 1ST OPENING 15 MINUTES WEAK SURFACE BLOW FOR 12 MINUTES AND DIED
1ST SHUT-IN 30 MINUTES NO BLOW BACK
2ND OPENING 13 MINUTES- NO BLOW FLUSHED TOOL GOOD SURGE NO HELP CAME OUT OF THE HOLE NO FINAL SHUT-IN TAKEN



PRESSURE SUMMARY

Time (Min.)	Pressure (psia)	Temp (deg F)	Annotation
0	1666.88	99.81	Initial Hydro-static
1	51.68	99.34	Open To Flow (1)
16	48.55	99.75	Shut-In(1)
49	50.00	100.10	End Shut-In(1)
49	49.99	100.10	Open To Flow (2)
58	50.94	100.23	Shut-In(2)
58	1565.38	100.77	Final Hydro-static

Recovery

Length (ft)	Description	Volume (bbl)
5.00	SLIGHTLY OIL CUT MUD 10 OIL 90 MUD	0.02

Gas Rates

Choke (inches)	Pressure (psia)	Gas Rate (Mcf/d)



DRILL STEM TEST REPORT

TOOL DIAGRAM

SHELBY RESOURCES L.L.C.

15-18S-14W BARTON

621 17 th STREET SUITE 1155
DENVER, COLORADO 80293

L S UNIT 1-15

Job Ticket: 01201

DST#: 2

ATTN: JEREMY SCHWARTZ

Test Start: 2015.12.04 @ 18:12:00

Tool Information

Drill Pipe:	Length: 3064.00 ft	Diameter: 3.80 inches	Volume: 42.98 bbl	Tool Weight: 2000.00 lb
Heavy Wt. Pipe:	Length: 0.00 ft	Diameter: 2.76 inches	Volume: 0.00 bbl	Weight set on Packer: 20000.00 lb
Drill Collar:	Length: 210.00 ft	Diameter: 2.25 inches	Volume: 1.03 bbl	Weight to Pull Loose: 65000.00 lb
			<u>Total Volume: 44.01 bbl</u>	Tool Chased 0.00 ft
Drill Pipe Above KB:	9.00 ft			String Weight: Initial 60000.00 lb
Depth to Top Packer:	3294.00 ft			Final 60000.00 lb
Depth to Bottom Packer:	ft			
Interval between Packers:	40.00 ft			
Tool Length:	69.00 ft			
Number of Packers:	2	Diameter: 6.75 inches		

Tool Comments:

Tool Description	Length (ft)	Serial No.	Position	Depth (ft)	Accum. Lengths
------------------	-------------	------------	----------	------------	----------------

Shut In Tool	5.00			3270.00	
Hydraulic tool	5.00			3275.00	
Jars	7.00			3282.00	
Safety Joint	2.00		Fluid	3284.00	
Top Packer	5.00			3289.00	
Packer	5.00			3294.00	29.00 Bottom Of Top Packer
Anchor	35.00			3329.00	
Recorder	0.00	9119	Inside	3329.00	
Recorder	0.00	9139	Outside	3329.00	
Bullnose	5.00			3334.00	40.00 Anchor Tool
Total Tool Length:	69.00				



DRILL STEM TEST REPORT

FLUID SUMMARY

SHELBY RESOURCES L.L.C.

15-18S-14W BARTON

621 17 th STREET SUITE 1155
DENVER, COLORADO 80293

L S UNIT 1-15

Job Ticket: 01201

DST#: 2

ATTN: JEREMY SCHWARTZ

Test Start: 2015.12.04 @ 18:12:00

Mud and Cushion Information

Mud Type: Gel Chem
Mud Weight: 9.00 lb/gal
Viscosity: 56.00 sec/qt
Water Loss: 7.20 in³
Resistivity: ohm.m
Salinity: 5300.00 ppm
Filter Cake: 1.00 inches

Cushion Type:
Cushion Length: ft
Cushion Volume: bbl
Gas Cushion Type:
Gas Cushion Pressure: psia

Oil API: deg API
Water Salinity: ppm

Recovery Information

Recovery Table

Length ft	Description	Volume bbl
5.00	SLIGHTLY OIL CUT MUD 10 OIL 90 MUD	0.025

Total Length: 5.00 ft Total Volume: 0.025 bbl

Num Fluid Samples: 0

Num Gas Bombs: 0

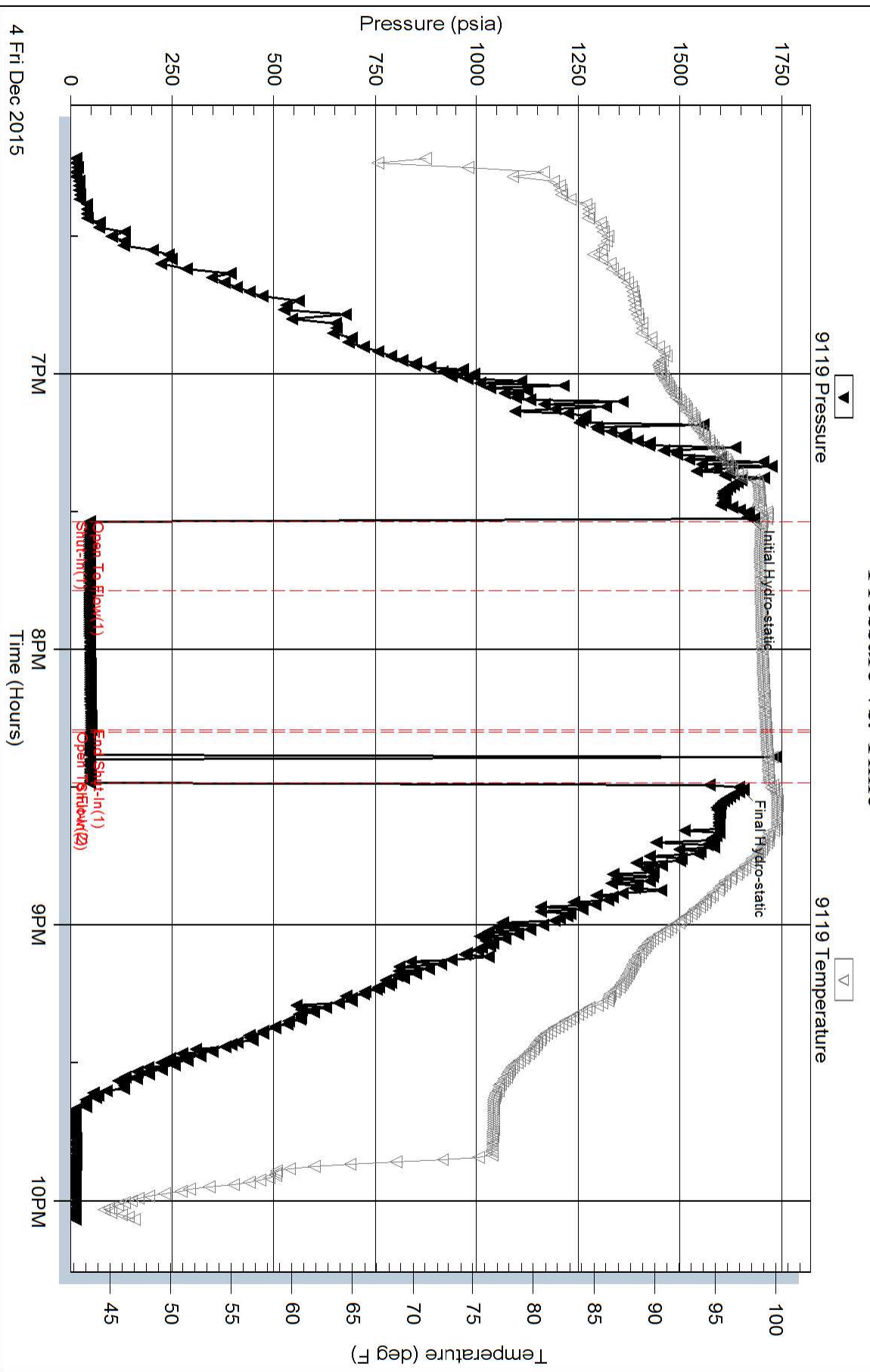
Serial #:

Laboratory Name:

Laboratory Location:

Recovery Comments:

Pressure vs. Time



Pressure vs. Time

