



Scale 1:240 Imperial

Well Name: LS Unit #1-15
 Surface Location: 1740' FNL, 2600' FEL, Sec. 15-18S-14W
 Bottom Location:
 API: 15-009-26134-0000
 License Number:
 Spud Date: 11/30/2015 Time: 2:15 PM
 Region: Barton County
 Drilling Completed: 12/6/2015 Time: 10:00 AM
 Surface Coordinates:
 Bottom Hole Coordinates:
 Ground Elevation: 1923.00ft
 K.B. Elevation: 1934.00ft
 Logged Interval: 2800.00ft To: 3560.00ft
 Total Depth: 3560.00ft
 Formation: Lansing Kansas City
 Drilling Fluid Type: Chemical/Fresh Water Gel

OPERATOR

Company: Shelby Resources, LLC
 Address: 445 Union Blvd, Suite 208
 Lakewood, CO 80228

Contact Geologist: Janine Sturdavant
 Contact Phone Nbr: 303-907-2209 / 720-274-4682
 Well Name: LS Unit #1-15
 Location: 1740' FNL, 2600' FEL, Sec. 15-18S-14W
 API: 15-009-26134-0000
 Pool:
 State: Kansas Field: Boyd Crossing
 Country: USA

LOGGED BY



Company: Shelby Resources, LLC
 Address: 445 UNION BLVD. Suite 208
 LAKEWOOD, CO. 80228

Phone Nbr: 203-671-6034
 Logged By: Geologist Name: Jeremy Schwartz

NOTES

The Shelby Resources, LLC LS Unit #1-15 was drilled to a total depth of 3560', bottoming in the Arbuckle. A TookeDaq gas detector was employed in the drilling of said well.

Three DST's were conducted throughout the Lansing-Kansas City. The DST Reports can be found at the bottom of this log.





Due to negative DST Results, sample shows, gas kicks, and log analysis it was determined by all parties involved that the well is not commercially productive and was plugged and abandoned. The dry samples were saved and will be available for further review at the Kansas Geological Society Well Sample Library, located in Wichita, KS.

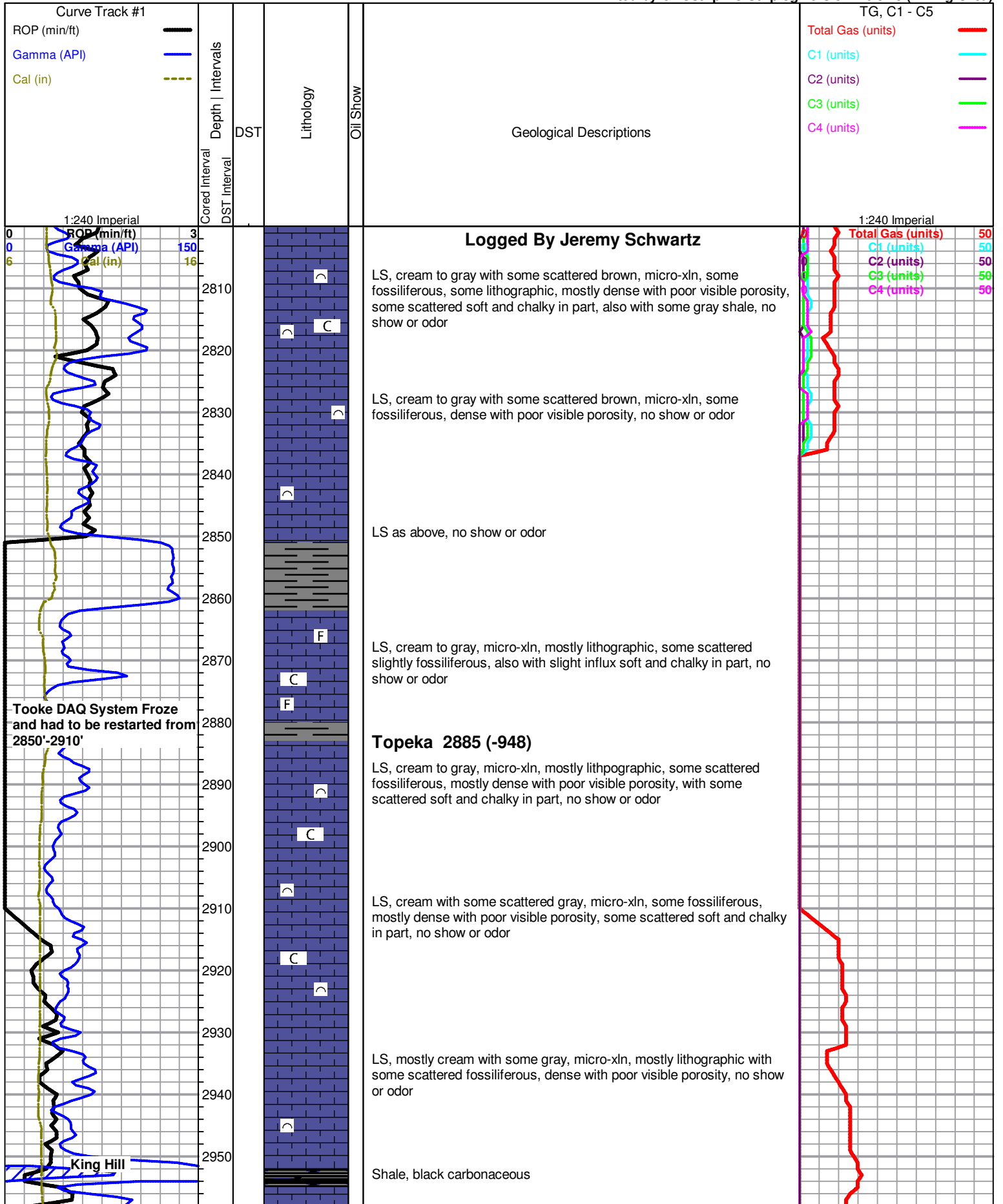
NOTE: The log tops are 3-4' higher than the drill time/sample tops so all DST's should be moved up accordingly

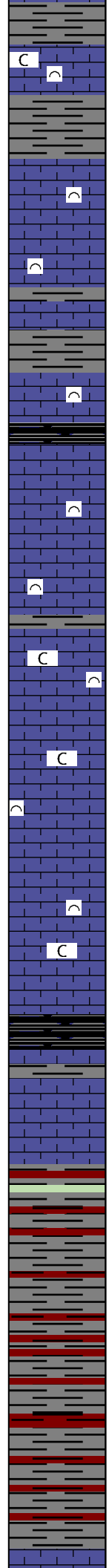
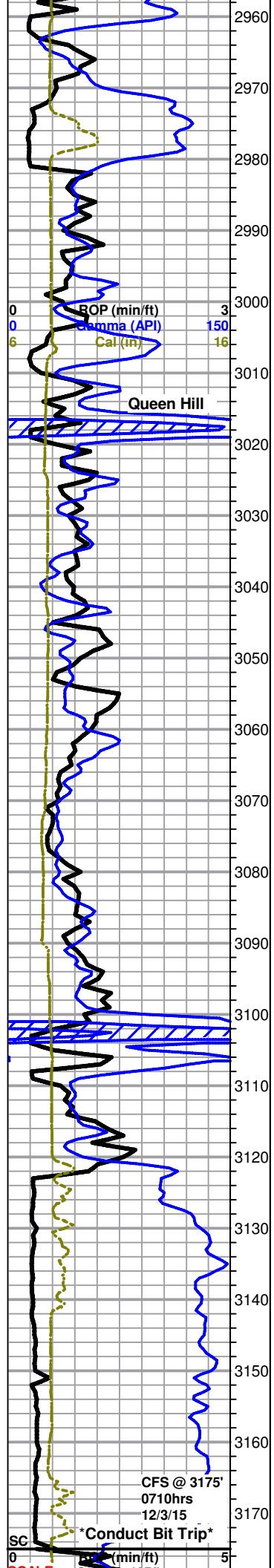
Respectfully Submitted,
 Jeremy Schwartz
 Geologist

CONTRACTOR

Contractor: Studier Drilling Co.

-  Vertical Log File
-  Horizontal Log File
-  Core Log File
-  Drill Cuttings Rpt





LS, cream to white with some scattered gray and brown, micro-xln with some scattered crypto-xln, some fossiliferous, dense with poor visible porosity, with some scattered soft and chalky in part, no show or odor

LS, cream to gray, micro-xln, fossiliferous and dense with poor visible porosity, no show or odor

LS as above, no show or odor

Shale, black carbonaceous

LS, cream to gray, micro-xln, fossiliferous and dense with poor visible porosity, no show or odor

LS, cream to white with some scattered gray, micro-xln, some lithographic, some fossiliferous, dense with poor visible porosity, also with some scattered soft and chalky in part, no show or odor

LS as above, slightly chalky, no show or odor

LS, mostly cream with some scattered white and gray, micro-xln, mostly lithographic with some scattered slightly fossiliferous, some soft and chalky in part, no show or odor

Heebner 3100 (-1163)

Shale, black carbonaceous

Toronto 3110 (-1173)

LS, cream to white with some very scattered light gray, micro-xln, mostly lithographic with some scattered slightly fossiliferous, dense with poor visible porosity, no show or odor

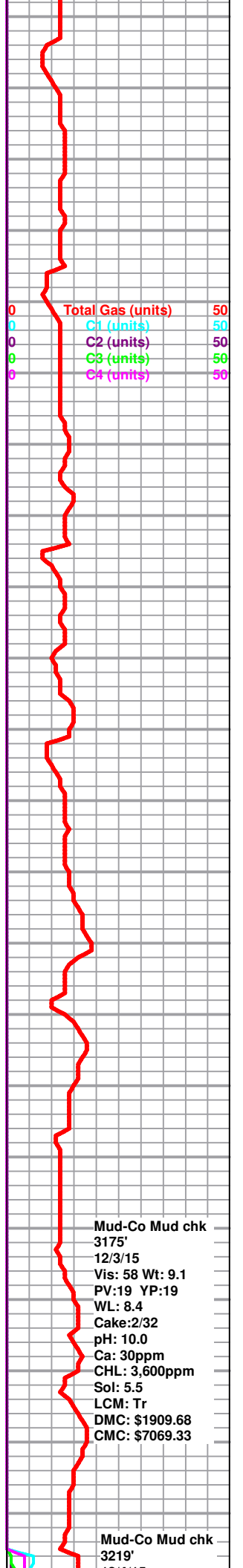
Douglas Shale 3122 (-1185)

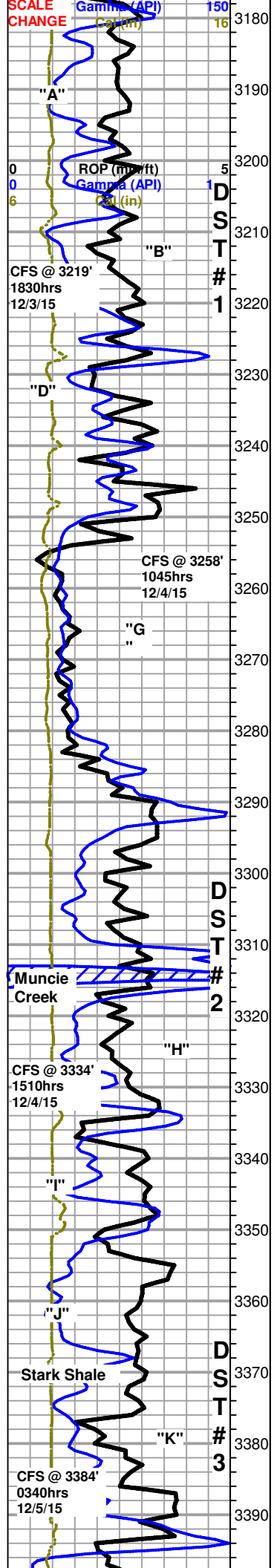
Shale, mostly gray with some scattered red and trace green, mostly soft and waxy, some blocky and dense, some silty

Shale as above, with slight influx red

Brown Lime 3175 (-1238)

LS, brown, micro-xln, fossiliferous and dense with no visible porosity, no show





Lansing 3183 (-1246)

LS, cream, micro-xln, mostly lithographic and dense with poor visible porosity, some scattered slightly fossiliferous, no show or odor

LS as above, with some very scattered soft and chalky in part, no show or odor

L S UNIT dst 1.jpg

3219' 30" LS, cream, micro-xln, mostly lithographic, some scattered slightly fossiliferous, mostly dense with poor visible porosity, with some very scattered (<5%) with few small edge vugs to slightly vuggy porosity and light golden brown to brown stain mostly in and around porosity only, few chips also with few small gas bubbles in porosity as well, slight to fair show free oil upon break in some chips, fair fleeting odor

3219' 60" Mostly same as above, with shows making up <5-10% of tray, fair odor

LS, cream to gray, micro-xln, mostly lithographic and dense with poor visible porosity, some scattered slightly fossiliferous, few chips with one to two small vugs and poor black stain inside porosity only, NSFO, poor fleeting odor

LS, mostly same as above with slight influx (<5% of tray) chips with slightly vuggy edges and stain in porosity as above, VSSFO in tray, no fluor., fair odor

3258' 30" LS, cream to white, micro-xln, some lithographic and dense with poor visible porosity, some sub-oomoldic to oomoldic with poor to fair visible oomold porosity, some chips with very scattered to scattered stain in porosity only, few chips with fair to mostly saturated stain in and around porosity, upon break SSFO and fair visible inter-xln porosity, no fluor., SSFO in tray, fairly chalky, good odor

3258' 60" LS as above, with slightly less shows than above, accounting for <15% of tray, NSFO, no fluor., very chalky, good odor

LS, cream to white, micro-xln, some lithographic and dense with poor visible porosity, some sub-oomoldic to oomoldic, mostly poor visible oomold porosity, some very scattered with poor to fair visible porosity and very scattered to scattered poor stain in and around porosity only, VSSFO upon break in few chips, no fluor., very chalky, fair fleeting odor

LS, cream, micro-xln, mostly sub-oomoldic and dense with poor visible porosity, very chalky, no fluor., show or odor

LS, cream to gray, micro-xln, some lithographic, some sub-oolitic to sub-oomoldic, dense with poor visible porosity, no show, fluor. or odor

LS, cream with influx gray and brown, lithographic and dense with no visible porosity, no show or odor

LS, gray to brown with some scattered cream, micro-xln, lithographic and dense with no visible porosity, no show or odor

L S UNIT dst 2.jpg

Shale, black carbonaceous

3334' 30" LS, cream with some gray and brown, lithographic and dense with no visible porosity, found 2 chips with few small edge vugs and black stain inside vugs, overall poor visible porosity, NSFO, no fluor., no odor

3334' 60" LS, cream to gray with some scattered brown, micro-xln, mostly lithographic and dense with no visible porosity, barren, few chips with one to two edge vugs and black stain in vugs only, few chips also sub-oolitic to sub-oomoldic with mostly poor visible oomold porosity, with scattered to very scattered weak dark brown to black stain in and around oomolds as well as several gas bubbles in oomolds, no fluor., or odor

~3340' LS, cream with some scattered light gray, micro-xln, mostly lithographic and dense with poor visible porosity, some scattered slightly fossiliferous, no show or odor

~3350' LS as above, no show or odor

LS, mostly cream with some scattered gray, micro-xln, lithographic and dense with poor visible porosity, no show or odor

3384' 30" LS, cream to white, micro-xln, some lithographic and dense with poor visible porosity, some soft and chalky, some scattered chips slightly vuggy with poor to fair visible porosity and scattered fair black to tarry black stain in and around porosity, NSFO, some scattered yellow fluor., slight show gas bubbles in tray as well as in porosity in some chips, chalky, fair odor

3384' 60" Mostly same as above, with slightly less shows and fluor., less chalky, NSFO, fair fleeting odor

L S UNIT dst 3.jpg

BKC 3394 (-1457)

Mostly gray and red shale with trace green

12/4/15
Vis: 56 Wt: 9.2
PV: 18 YP: 16
WL: 7.2
Cake: 2/32
pH: 9.0
Ca: 40ppm
CHL: 5,300ppm
Sol: 6.1
LCM: 1/2

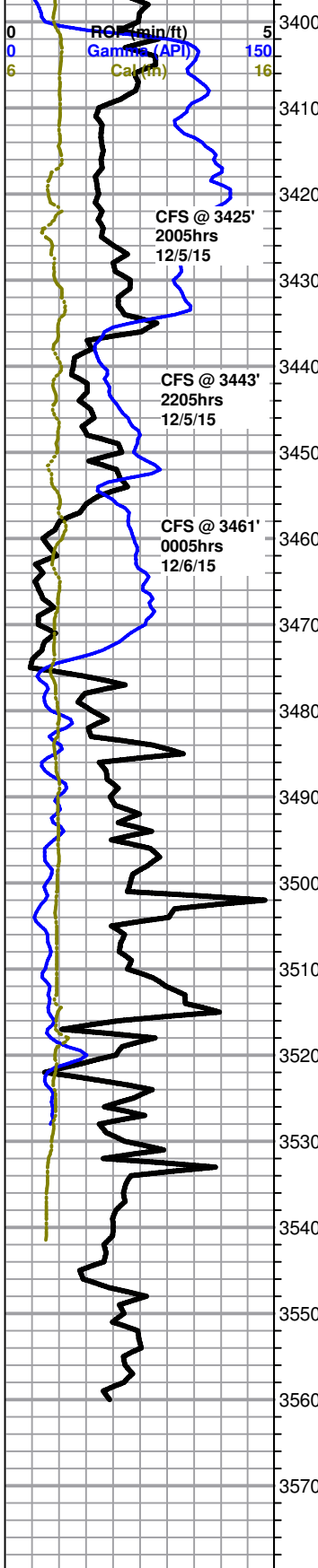
Total DMC: \$221.17
CMC: \$7290.50

C2 (units) 50
C3 (units) 50
C4 (units) 50

SCALE CHANGE (units) 120
C1 (units) 120
C2 (units) 120
C3 (units) 120
C4 (units) 120

Mud-Co Mud chk
3384'
12/5/15
Vis: 62 Wt: 9.3
PV: 19 YP: 21
WL: 8.8
Cake: 2/32
pH: 11.0
Ca: 40ppm
CHL: 6,500ppm
Sol: 6.7 LCM: 1/2
DMC: \$328.01
CMC: \$7618.51

SCALE CHANGE (units) 275
High (units) 275
Background (units) 275
Due to Trip Gas (units) 275
from DST #3 (units) 275



Mixed cream to gray LS with scattered gray and red shales with trace green, with some scattered orange to red and tan to opaque cherts, also found a few sand clusters, clear to reddish-brown, sub-rounded to sub-angular, poorly sorted, fairly friable, barren, red wash, no show or odor

3425' 30" Mixed cream to gray LS with some scattered red and gray shales with trace green, with some very scattered orange to red and tan to opaque cherts, red wash, no show or odor

3425' 60" Conglomerate as above, red wash. no show or odor

3443' 30" Mixed LS, shales, and some scattered cherts, red wash, no show or odor

3443' 60" Conglomerate as above, found one sand cluster, clear to light brown, sub-rounded and fairly well sorted, friable, with some very scattered staining on some grains, some scattered loose grains in bottom of tray, with some very scattered pyrite, sample washes red, NSFO, no fluor., or odor

3461' 30" Conglomerate as above, with some very scattered dolomite, white, micro-med xln, sub-rhombic and fairly friable with poor visible porosity, with some scattered to very scattered dead black gilsonitic staining, NSFO in tray or upon break, no odor

3461' 60" Dolomite as above, with some scattered to very scattered dead black gilsonitic staining, no odor

Arbuckle 3473 (-1539)

Dolomite, white, micro-xln, sub-sucrosic and dense with poor visible porosity, some fairly friable, no show or odor

Dolomite as above, no show or odor

Dolomite, cream to white, micro-xln, sub-sucrosic and dense with poor visible porosity, some fairly friable, slightly chalky, no show or odor

Dolomite as above, slightly chalky, no show or odor

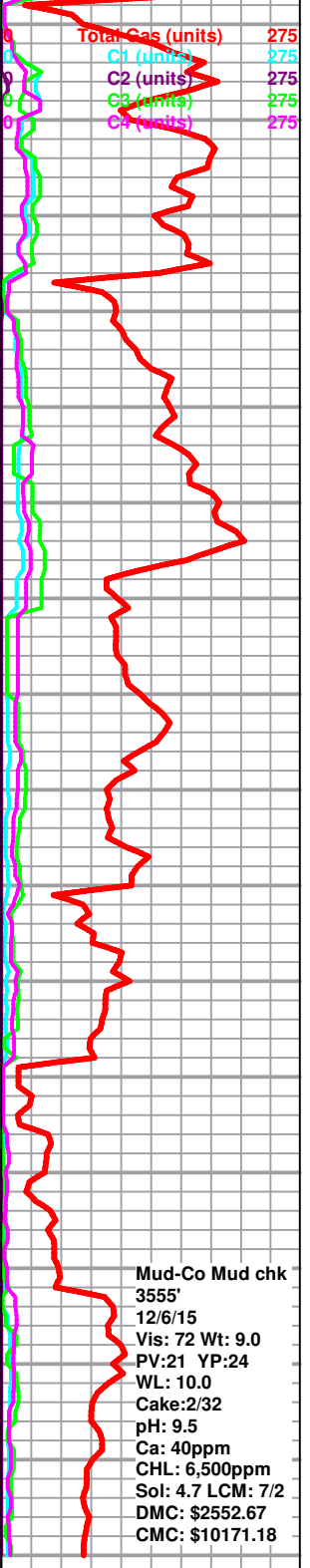
Dolomite, cream to white, micro-xln, sub-sucrosic and dense with poor visible porosity, slightly chalky, no show or odor

Dolomite as above, slightly chalky, no show or odor

Dolomite, cream to white, micro-xln, sub-sucrosic and dense with poor visible porosity, with some very scattered light brown to cream, sub-rhombic, no show or odor

Dolomite as above, no show or odor

Dolomite, cream to white, micro-xln, mostly sub-sucrosic and dense with poor visible porosity, with some very scattered sub-rhombic, slightly chalky, no show or odor



Mud-Co Mud chk
 3555'
 12/6/15
 Vis: 72 Wt: 9.0
 PV:21 YP:24
 WL: 10.0
 Cake:2/32
 pH: 9.5
 Ca: 40ppm
 CHL: 6,500ppm
 Sol: 4.7 LCM: 7/2
 DMC: \$2552.67
 CMC: \$10171.18

Rotary TD 3560' @ 1000hrs 12/5/15
 Casedhole Solutions Logging TD @ 3559'
 Complete Logging Operations @ 1745hrs 12/5/15
 Geologist Jeremy Schwartz off location @ 1815hrs 12/5/15



DRILL STEM TEST REPORT

SHELBY RESOURCES L.L.C.

15-18S-14W BARTON

621 17 th STREET SUITE 1155
DENVER, COLORADO 80293

L S UNIT 1-15

Job Ticket: 01200

DST#: 1

ATTN: JEREMY SCHWARTZ

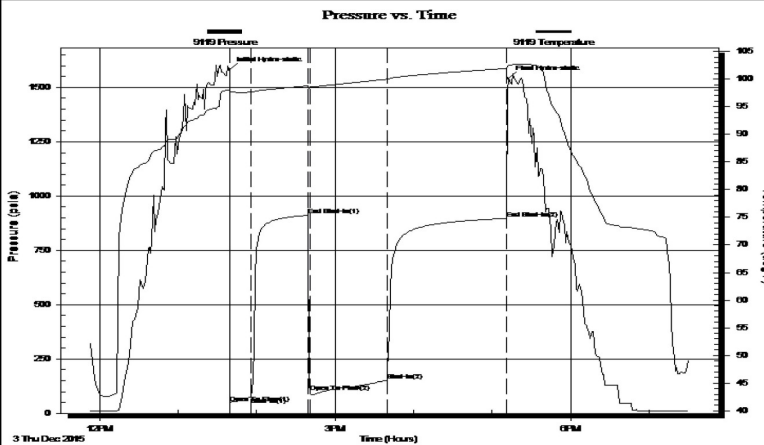
Test Start: 2015.12.04 @ 09:52:00

GENERAL INFORMATION:

Formation: **KANSAS CITY ;B**
 Deviated: No Whipstock: ft (KB)
 Test Type: Conventional Bottom Hole (Initial)
 Time Tool Opened: 11:39:00 Tester: GENE BUDIG
 Time Test Ended: 19:29:00 Unit No: 1
 Interval: **3203.00 ft (KB) To 3219.00 ft (KB) (TVD)** Reference Elevations: 1934.00 ft (KB)
 Total Depth: 3219.00 ft (KB) (TVD) 1923.00 ft (CF)
 Hole Diameter: 7.88 inches Hole Condition: Fair KB to GR/CF: 11.00 ft

Serial #: 9119 Inside
 Press@RunDepth: 897.13 psia @ 3214.00 ft (KB) Capacity: 5000.00 psia
 Start Date: 2015.12.03 End Date: 2015.12.03 Last Calib.: 2015.12.04
 Start Time: 11:52:00 End Time: 19:30:00 Time On Btm: 2015.12.03 @ 13:39:00
 Time Off Btm: 2015.12.03 @ 17:12:30

TEST COMMENT: 1st OPENING 15 MINUTES GOOD BLOW BUILT TO BOTTOM OF A 5 GALLON BUCKET IN 2 1/2 MINJUTES
 1st SHUT-IN 45 MINUTE-NO BLOW BACK
 2nd OPENING 60 MINUTES GOOD BLOW BUILT TO BOTTOM OF A 5 GALLON BUCKET IN 2 MINUTES
 2nd SHUT-IN 90 MINUTES-GAS TO SRFACE ON THBE 2ND SHUT-IN



PRESSURE SUMMARY

Time (Min.)	Pressure (psia)	Temp (deg F)	Annotation
0	1581.67	98.04	Initial Hydro-static
1	48.10	97.31	Open To Flow (1)
18	76.36	97.63	Shut-In(1)
61	911.99	98.80	End Shut-In(1)
62	97.35	98.61	Open To Flow (2)
121	150.73	99.96	Shut-In(2)
212	897.13	101.91	End Shut-In(2)
214	1542.57	102.49	Final Hydro-static

Recovery

Length (ft)	Description	Volume (bbl)
60.00	SLIGHTLY OIL CUT MUDDY WATER	2950.70
0.00	5 GAS 5 OIL 10 MUD 80 WATER	0.00
60.00	OIL AND GAS CUT MUDDY WATER	2950.70
0.00	15 GAS 40 OIL 15 MUD 30 WATER	0.00
120.00	SLIGHTLY MUD CUT GASSY OIL	4426.47
0.00	10 GAS 75 OIL 15 MUD	0.00

Gas Rates

Choke (inches)	Pressure (psia)	Gas Rate (Mcf/d)

DRILL STEM TEST REPORT



SHELBY RESOURCES L.L.C.

15-18S-14W BARTON

621 17th STREET SUITE 1155
DENVER, COLORADO 80293

L S UNIT 1-15

Job Ticket: 01201

DST#: 2

ATTN: JEREMY SCHWARTZ

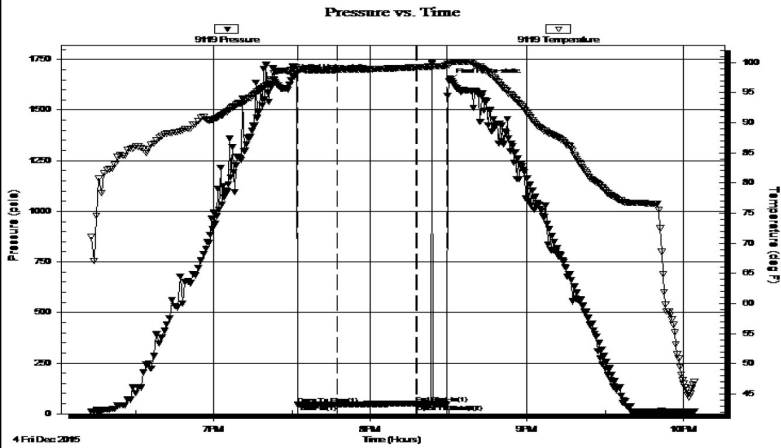
Test Start: 2015.12.04 @ 18:12:00

GENERAL INFORMATION:

Formation: **KANSAS CITY 'H**
 Deviated: No Whipstock: ft (KB)
 Time Tool Opened: 19:32:00
 Time Test Ended: 00:00:00
 Test Type: Conventional Bottom Hole (Initial)
 Tester: GENE BUDIG
 Unit No: 1
 Interval: **3294.00 ft (KB) To 3334.00 ft (KB) (TVD)**
 Total Depth: 3334.00 ft (KB) (TVD)
 Reference Elevations: 1934.00 ft (KB)
 Hole Diameter: 7.88 inches Hole Condition: Fair
 KB to GR/CF: 11.00 ft
 5923.00 ft (CF)

Serial #: 9119 **Inside**
 Press@RunDepth: 50.47 psia @ 3329.00 ft (KB) Capacity: 5000.00 psia
 Start Date: 2015.12.04 End Date: 2015.12.04 Last Calib.: 2015.12.04
 Start Time: 18:13:00 End Time: 22:04:00 Time On Btm: 2015.12.04 @ 19:31:00
 Time Off Btm: 2015.12.04 @ 20:30:00

TEST COMMENT: 1ST OPENING 15 MINUTES WEAK SURFACE BLOW FOR 12 MINUTES AND DIED
 1ST SHUT-IN 30 MINUTES NO BLOW BACK
 2ND OPENING 13 MINUTES- NO BLOW FLUSHED TOOL GOOD SURGE NO HELP CAME OUT OF THE
 HOLE NO FINAL SHUT-IN TAKEN



PRESSURE SUMMARY

Time (Min.)	Pressure (psia)	Temp (deg F)	Annotation
0	1666.23	99.29	Initial Hydro-static
1	47.50	98.88	Open To Flow (1)
16	46.96	98.76	Shut-In(1)
47	50.47	99.19	End Shut-In(1)
47	48.35	99.20	Open To Flow (2)
58	47.03	99.45	Shut-In(2)
59	1644.97	99.61	Final Hydro-static

Recovery

Length (ft)	Description	Volume (bbl)
5.00	SLIGHTLY OIL CUT MUD 10 OIL 90 MUD	0.02

Gas Rates

Choke (inches)	Pressure (psia)	Gas Rate (Mcf/d)



DRILL STEM TEST REPORT

SHELBY RESOURCES L.L.C.

15-18S-14W BARTON

621 17 th STREET SUITE 1155
DENVER, COLORADO 80293

L S UNIT 1-15

Job Ticket: 01202

DST#: 3

ATTN: JEREMY SCHWARTZ

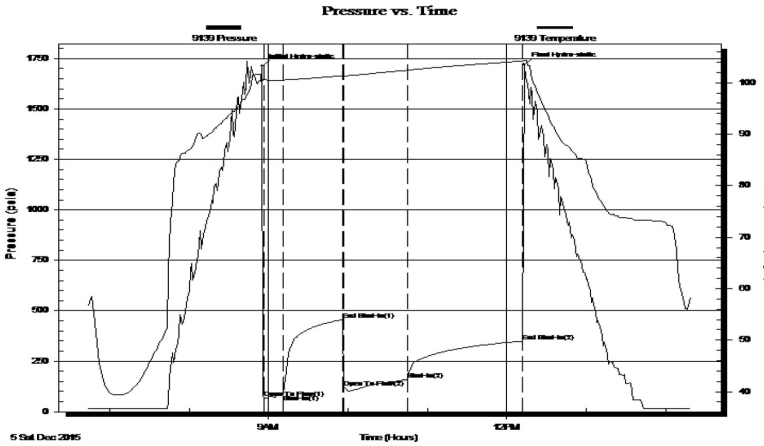
Test Start: 2015.12.05 @ 06:43:00

GENERAL INFORMATION:

Formation: **KANSAS CITY K**
 Deviated: No Whipstock: ft (KB)
 Time Tool Opened: 08:56:00
 Time Test Ended: 02:19:00
 Interval: **3366.00 ft (KB) To 3384.00 ft (KB) (TVD)**
 Total Depth: 3384.00 ft (KB) (TVD)
 Hole Diameter: 7.88 inches Hole Condition: Fair
 Test Type: Conventional Bottom Hole (Initial)
 Tester: GENE BUDIG
 Unit No: 1
 Reference Elevations: 1934.00 ft (KB)
 1923.00 ft (CF)
 KB to GR/CF: 11.00 ft

Serial #: 9139 Outside
 Press@RunDepth: 349.19 psia @ 3379.00 ft (KB) Capacity: 5000.00 psia
 Start Date: 2015.12.05 End Date: 2015.12.05 Last Calib.: 2015.12.05
 Start Time: 06:43:00 End Time: 14:19:00 Time On Btm: 2015.12.05 @ 08:55:00
 Time Off Btm: 2015.12.05 @ 12:13:00

TEST COMMENT: 1ST FLOW 15 MINUTES GOOD BLOW BUILT TO THE BOTTOM OF A 5 GALLON BUCKET IN 2 MINUTES
 1ST SHUT-IN 45 MINUTES GOOD BLOW BACK
 2ND OPENING 45 MINUTES GOOD BLOW BOTTOM OF A 5 GALLON BIUCKET IN 3 MINUTE
 2ND SHUT-IN 90 MINUTES- GOOD BLOW BACK



PRESSURE SUMMARY

Time (Min.)	Pressure (psia)	Temp (deg F)	Annotation
0	1710.46	101.22	Initial Hydro-static
2	69.94	100.65	Open To Flow (1)
16	83.22	100.53	Shut-In(1)
61	455.53	101.40	End Shut-In(1)
63	118.05	101.34	Open To Flow (2)
111	158.71	102.46	Shut-In(2)
197	349.19	104.22	End Shut-In(2)
198	1719.18	104.29	Final Hydro-static

Recovery

Length (ft)	Description	Volume (bbl)
180.00	SLIGHTLY MUD CUT GASSY OIL	0.89
0.00	10 GAS 75 OIL 15 MUD	0.00
180.00	CLEAN GASSY OIL 20 GAS 80 OIL	2.25
0.00	GRAVITY 44 CORRECTED	0.00

Gas Rates

Choke (inches)	Pressure (psia)	Gas Rate (Mcf/d)