



## DRILL STEM TEST REPORT

Prepared For: **TALUKA OERATIONS LLC**

P.O. BOX 1213  
HAYS, KANSAS 67601

ATTN: JERAMY SCHWARTZ

**AXMAN FARMS 1-18**

**18-17S-14W**

Start Date: 2015.12.12 @ 15:00:00

End Date: 2015.12.12 @ 21:02:00

Job Ticket #: 01207                      DST #: 1

Eagle Testers  
1309 Patton Road    Great Bend, Kansas 67530  
620-791-7394

Printed: 2015.12.12 @ 21:21:34



# DRILL STEM TEST REPORT

TALUKA OPERATIONS LLC

18-17S-14W

P.O. BOX 1213  
HAYS, KANSAS 67601

AXMAN FARMS 1-18

ATTN: JERAMY SCHWARTZ

Job Ticket: 01207

DST#: 1

Test Start: 2015.12.12 @ 15:00:00

## GENERAL INFORMATION:

Formation: **TORONTO**

Deviated: No Whipstock: ft (KB)

Time Tool Opened: 16:39:00

Time Test Ended: 21:02:00

Test Type: Conventional Bottom Hole (Initial)

Tester: GENE BUDIG

Unit No: 1

Interval: **3060.00 ft (KB) To 3105.00 ft (KB) (TVD)**

Reference Elevations: 1892.00 ft (KB)

Total Depth: 3105.00 ft (KB) (TVD)

1884.00 ft (CF)

Hole Diameter: 7.88 inches Hole Condition: Fair

KB to GR/CF: 8.00 ft

Serial #: 9119

Inside

Press@RunDepth: 304.09 psia @ 3100.00 ft (KB)

Capacity: 5000.00 psia

Start Date: 2015.12.12

End Date: 2015.12.12

Last Calib.: 2015.12.12

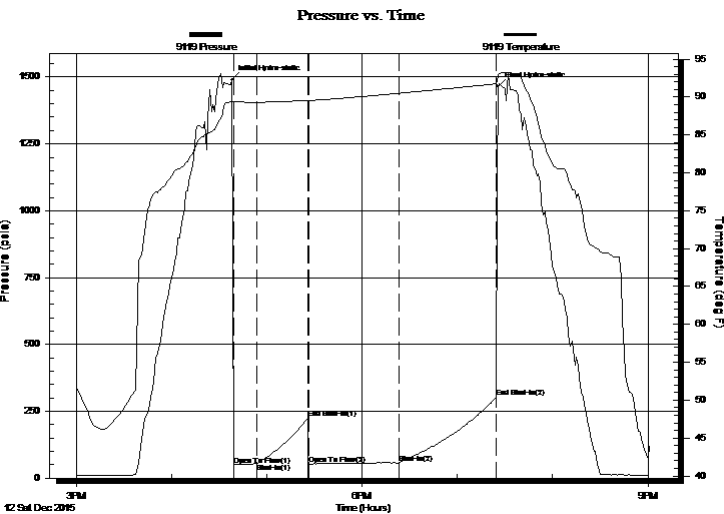
Start Time: 15:00:00

End Time: 21:01:30

Time On Btm: 2015.12.12 @ 16:38:00

Time Off Btm: 2015.12.12 @ 19:25:30

TEST COMMENT: 1ST OPENING 15 MINUTES WEAK SURFACE BLOW FOR 7 MINUTES AND DIED  
1ST SHUT-IN 30 MINUTES NO BLOW BACK  
2ND OPENING 60 MINUTES WEAK BUILDING BLOW BUILT TO 6 1/2 INCHES  
2ND SHUT-IN 60 MINUTES NO BLOW BACK



## PRESSURE SUMMARY

Time (Min.)	Pressure (psia)	Temp (deg F)	Annotation
0	1490.36	89.38	Initial Hydro-static
1	47.98	89.25	Open To Flow (1)
16	54.75	89.32	Shut-In(1)
48	225.09	89.60	End Shut-In(1)
49	51.16	89.56	Open To Flow (2)
105	57.26	90.50	Shut-In(2)
167	304.09	91.75	End Shut-In(2)
168	1465.51	92.95	Final Hydro-static

## Recovery

Length (ft)	Description	Volume (bbl)
15.00	SLIGHTLUY OIL CUT MUD 4 OIL 96 MUD	0.00
0.00	THERE WAS A GOOD SHOW OF FREE G.O.OOY OIL	
0.00	BETWEEN THE TOOLS	0.00

## Gas Rates

	Choke (inches)	Pressure (psia)	Gas Rate (Mcf/d)



# DRILL STEM TEST REPORT

TALUKA OPERATIONS LLC

18-17S-14W

P.O. BOX 1213  
HAYS, KANSAS 67601

AXMAN FARMS 1-18

ATTN: JERAMY SCHWARTZ

Job Ticket: 01207

DST#: 1

Test Start: 2015.12.12 @ 15:00:00

## GENERAL INFORMATION:

Formation: **TORONTO**

Deviated: No Whipstock: ft (KB)

Time Tool Opened: 16:39:00

Time Test Ended: 21:02:00

Test Type: Conventional Bottom Hole (Initial)

Tester: GENE BUDIG

Unit No: 1

Interval: **3060.00 ft (KB) To 3105.00 ft (KB) (TVD)**

Reference Elevations: 1892.00 ft (KB)

Total Depth: 3105.00 ft (KB) (TVD)

1884.00 ft (CF)

Hole Diameter: 7.88 inches Hole Condition: Fair

KB to GR/CF: 8.00 ft

Serial #: **3119** Outside

Press@RunDepth: 302.34 psia @ 3100.00 ft (KB)

Capacity: 5000.00 psia

Start Date: 2015.12.12

End Date: 2015.12.12

Last Calib.: 2015.12.12

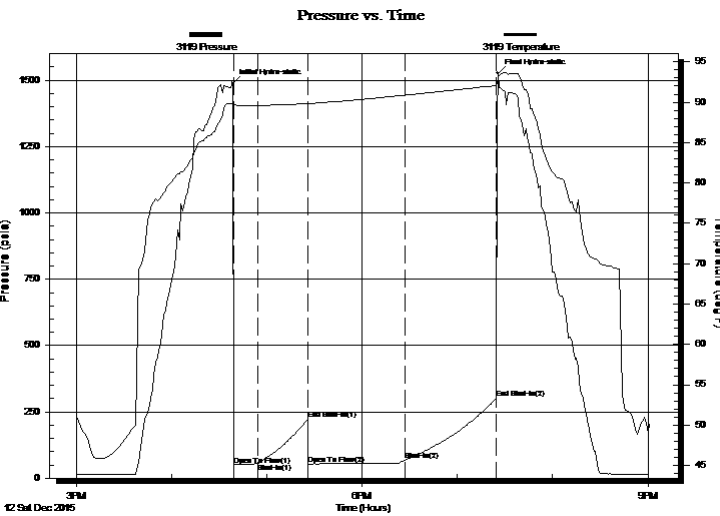
Start Time: 15:00:00

End Time: 21:01:30

Time On Btm: 2015.12.12 @ 16:38:30

Time Off Btm: 2015.12.12 @ 19:25:30

TEST COMMENT: 1ST OPENING 15 MINUTES WEAK SURFACE BLOW FOR 7 MINUTES AND DIED  
1ST SHUT-IN 30 MINUTES NO BLOW BACK  
2ND OPENING 60 MINUTES WEAK BUILDING BLOW BUILT TO 6 1/2 INCHES  
2ND SHUT-IN 60 MINUTES NO BLOW BACK



## PRESSURE SUMMARY

Time (Min.)	Pressure (psia)	Temp (deg F)	Annotation
0	1487.86	89.93	Initial Hydro-static
1	49.80	89.60	Open To Flow (1)
16	55.81	89.61	Shut-In(1)
47	223.47	89.86	End Shut-In(1)
48	50.49	89.82	Open To Flow (2)
109	67.56	90.88	Shut-In(2)
166	302.34	92.07	End Shut-In(2)
167	1526.75	93.06	Final Hydro-static

## Recovery

Length (ft)	Description	Volume (bbl)
15.00	SLIGHTLUY OIL CUT MUD 4 OIL 96 MUD	0.00
0.00	THERE WAS A GOOD SHOW OF FREE G.O.OOY OIL	
0.00	BETWEEN THE TOOLS	0.00

## Gas Rates

Choke (inches)	Pressure (psia)	Gas Rate (Mcf/d)



# DRILL STEM TEST REPORT

TOOL DIAGRAM

TALUKA OPERATIONS LLC

18-17S-14W

P.O. BOX 1213  
HAYS, KANSAS 67601

AXMAN FARMS 1-18

Job Ticket: 01207

DST#: 1

ATTN: JERAMY SCHWARTZ

Test Start: 2015.12.12 @ 15:00:00

## Tool Information

Drill Pipe:	Length: 2750.00 ft	Diameter: 3.80 inches	Volume: 38.58 bbl	Tool Weight: 2000.00 lb
Heavy Wt. Pipe:	Length: 311.00 ft	Diameter: 0.00 inches	Volume: 0.00 bbl	Weight set on Packer: 20000.00 lb
Drill Collar:	Length: 0.00 ft	Diameter: 2.25 inches	Volume: 0.00 bbl	Weight to Pull Loose: 74000.00 lb
			<u>Total Volume: 38.58 bbl</u>	Tool Chased 0.00 ft
Drill Pipe Above KB:	30.00 ft			String Weight: Initial 42000.00 lb
Depth to Top Packer:	3060.00 ft			Final 42000.00 lb
Depth to Bottom Packer:	ft			
Interval between Packers:	45.00 ft			
Tool Length:	74.00 ft			
Number of Packers:	2	Diameter: inches		

Tool Comments:

## Tool Description

Tool Description	Length (ft)	Serial No.	Position	Depth (ft)	Accum. Lengths
Shut In Tool	5.00			3036.00	
Hydraulic tool	5.00			3041.00	
Jars	7.00			3048.00	
Safety Joint	2.00		Fluid	3050.00	
Top Packer	5.00			3055.00	
Packer	5.00			3060.00	29.00 Bottom Of Top Packer
Anchor	40.00			3100.00	
Recorder	0.00	9119	Inside	3100.00	
Recorder	0.00	3119	Outside	3100.00	
Bullnose	5.00			3105.00	45.00 Anchor Tool
<b>Total Tool Length:</b>	<b>74.00</b>				



# DRILL STEM TEST REPORT

**FLUID SUMMARY**

TALUKA OPERATIONS LLC

**18-17S-14W**

P.O. BOX 1213  
HAYS, KANSAS 67601

**AXMAN FARMS 1-18**

Job Ticket: 01207

**DST#: 1**

ATTN: JERAMY SCHWARTZ

Test Start: 2015.12.12 @ 15:00:00

## Mud and Cushion Information

Mud Type: Gel Chem  
Mud Weight: 9.00 lb/gal  
Viscosity: 48.00 sec/qt  
Water Loss: 9.20 in<sup>3</sup>  
Resistivity: ohm.m  
Salinity: 4700.00 ppm  
Filter Cake: 1.00 inches

Cushion Type:  
Cushion Length: ft  
Cushion Volume: bbl  
Gas Cushion Type:  
Gas Cushion Pressure: psia

Oil API: deg API  
Water Salinity: ppm

## Recovery Information

Recovery Table

Length ft	Description	Volume bbl
15.00	SLIGHTLUY OIL CUT MUD 4 OIL 96 MUD	0.000
0.00	THERE WAS A GOOD SHOW OF FREE GASS	0.000
0.00	BETWEEN THE TOOLS	0.000

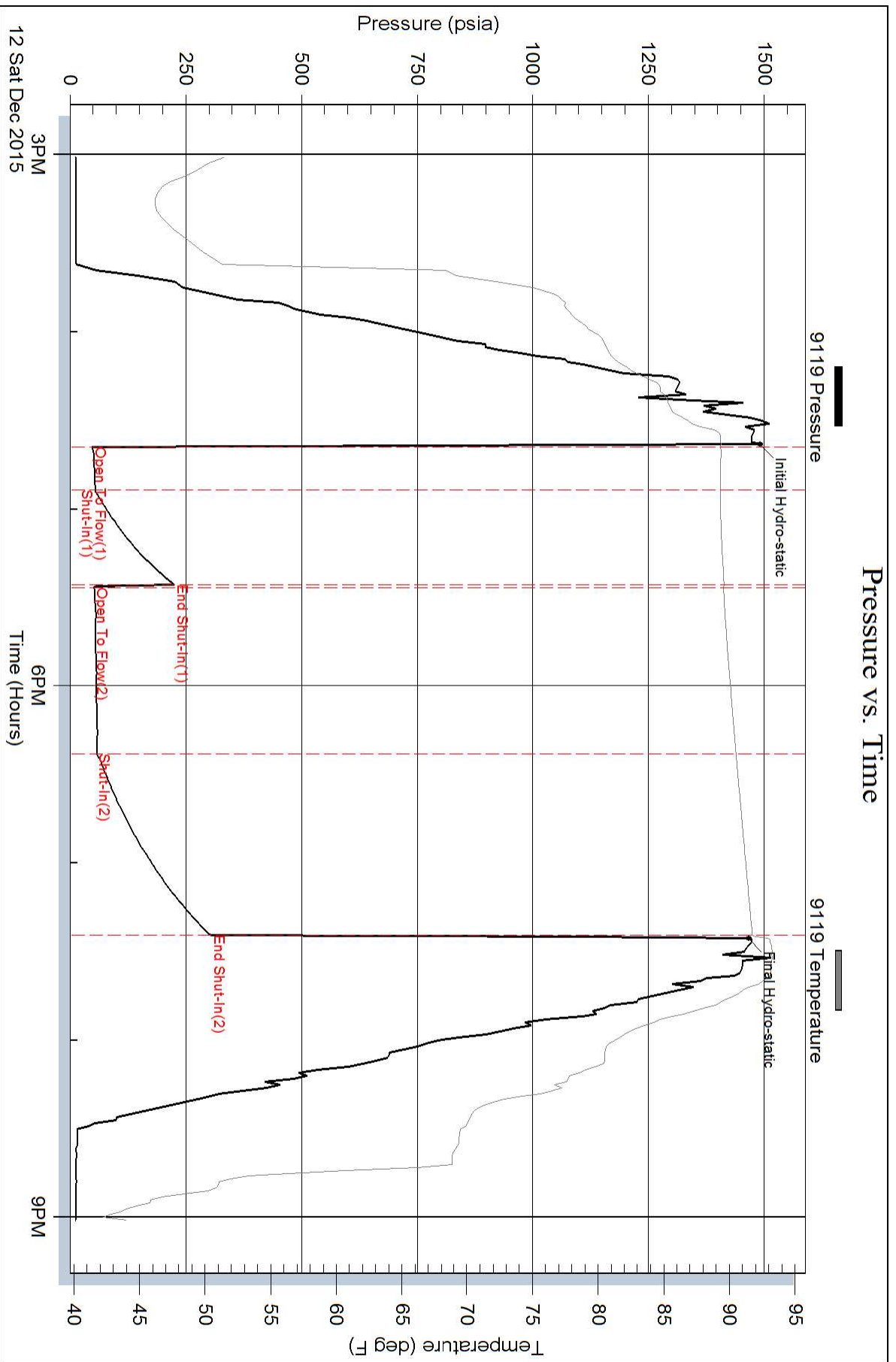
Total Length: 15.00 ft      Total Volume: bbl

Num Fluid Samples: 0      Num Gas Bombs: 0      Serial #:

Laboratory Name:      Laboratory Location:

Recovery Comments:

### Pressure vs. Time



### Pressure vs. Time

