



## DRILL STEM TEST REPORT

Prepared For: **TYLUKA OERATIONS LLC**

P.O. BOX 1213  
HAYS, KANSAS 67601

ATTN: JERAMY SCHWARTZ

**AXMAN FARMS 1-18**

**18-17S-14W**

Start Date: 2015.12.13 @ 08:50:00

End Date: 2015.12.14 @ 01:21:00

Job Ticket #: 01209                      DST #: 3

Eagle Testers  
1309 Patton Road    Great Bend, Kansas 67530  
620-791-7394

Printed: 2015.12.14 @ 01:34:01



# DRILL STEM TEST REPORT

TYLUKA OPERATIONS LLC

18-17S-14W

P.O. BOX 1213  
HAYS, KANSAS 67601

AXMAN FARMS 1-18

ATTN: JERAMY SCHWARTZ

Job Ticket: 01209

DST#: 3

Test Start: 2015.12.13 @ 08:50:00

## GENERAL INFORMATION:

Formation: **LANSING D-F**

Deviated: No Whipstock: ft (KB)

Time Tool Opened: 00:00:00

Time Test Ended: 01:21:00

Test Type: Conventional Bottom Hole (Initial)

Tester: GENE BUDIG

Unit No: 1

Interval: **3190.00 ft (KB) To 3220.00 ft (KB) (TVD)**

Reference Elevations: 1892.00 ft (KB)

Total Depth: 3220.00 ft (KB) (TVD)

1884.00 ft (CF)

Hole Diameter: 7.88 inches Hole Condition:

KB to GR/CF: 8.00 ft

Serial #: **9139** Outside

Press@RunDepth: 674.33 psia @ 3215.00 ft (KB)

Capacity: 5000.00 psia

Start Date: 2015.12.13

End Date:

2015.12.14

Last Calib.:

2015.12.14

Start Time: 20:50:00

End Time:

01:21:00

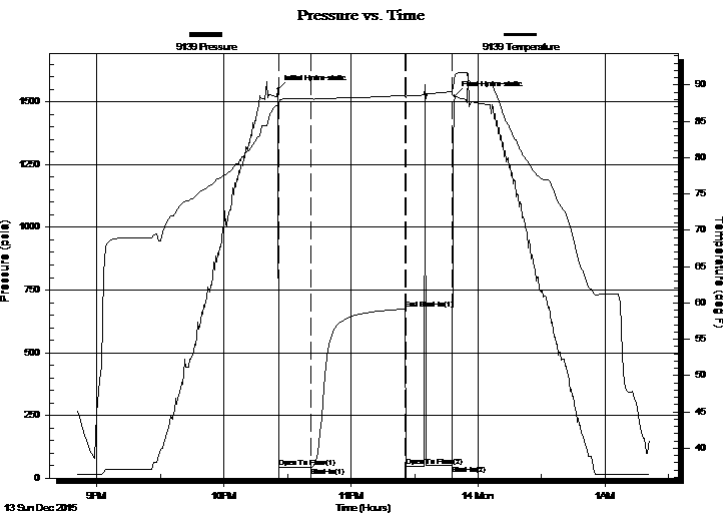
Time On Btm:

2015.12.13 @ 22:25:30

Time Off Btm:

2015.12.13 @ 23:49:00

TEST COMMENT: 1ST OPENING 15 MINUTES WEAK BLOW FOR 12 MINUTES AND DIED  
1ST SHUT-IN 45 MINUTES NO BLOW BACK  
2ND OPENING 20 MINUTES NO BLOW FLUSHED TOOL GOOD SURGE NO HELP CAME OUT OF THE HOLE NO FINAL SHUT-IN TAKEN



## PRESSURE SUMMARY

Time (Min.)	Pressure (psia)	Temp (deg F)	Annotation
0	1549.42	87.22	Initial Hydro-static
1	42.74	87.58	Open To Flow (1)
16	45.07	88.06	Shut-In(1)
60	674.33	88.60	End Shut-In(1)
61	48.52	88.22	Open To Flow (2)
82	51.58	89.07	Shut-In(2)
84	1523.19	91.44	Final Hydro-static

## Recovery

Length (ft)	Description	Volume (bbl)
10.00	DRILLING MUD	0.08

## Gas Rates

	Choke (inches)	Pressure (psia)	Gas Rate (Mcf/d)



# DRILL STEM TEST REPORT

TYLUKA OPERATIONS LLC

18-17S-14W

P.O. BOX 1213  
HAYS, KANSAS 67601

AXMAN FARMS 1-18

ATTN: JERAMY SCHWARTZ

Job Ticket: 01209

DST#: 3

Test Start: 2015.12.13 @ 08:50:00

## GENERAL INFORMATION:

Formation: **LANSING D-F**

Deviated: No Whipstock: ft (KB)

Time Tool Opened: 00:00:00

Time Test Ended: 01:21:00

Test Type: Conventional Bottom Hole (Initial)

Tester: GENE BUDIG

Unit No: 1

Interval: **3190.00 ft (KB) To 3220.00 ft (KB) (TVD)**

Reference Elevations: 1892.00 ft (KB)

Total Depth: 3220.00 ft (KB) (TVD)

1884.00 ft (CF)

Hole Diameter: 7.88 inches Hole Condition:

KB to GR/CF: 8.00 ft

Serial #: 9119

Inside

Press@RunDepth: 675.71 psia @ 3215.00 ft (KB)

Capacity: 5000.00 psia

Start Date: 2015.12.13

End Date:

2015.12.14

Last Calib.: 2015.12.14

Start Time: 20:50:00

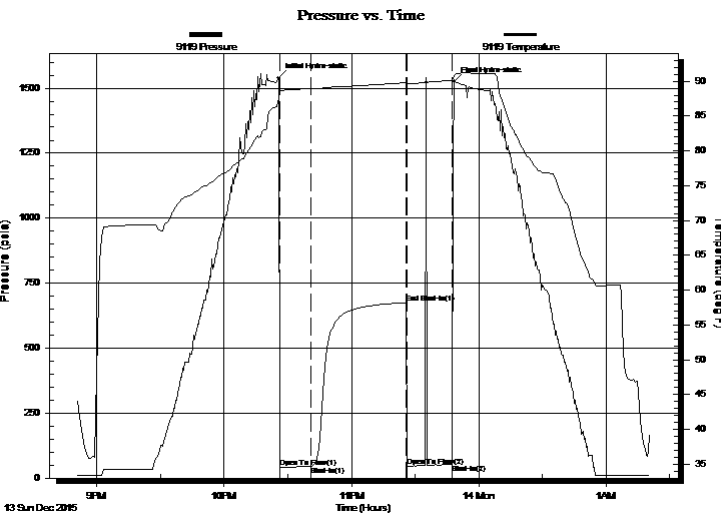
End Time:

01:20:30

Time On Btm: 2015.12.13 @ 22:25:30

Time Off Btm: 2015.12.13 @ 23:48:30

TEST COMMENT: 1ST OPENING 15 MINUTES WEAK BLOW FOR 12 MINUTES AND DIED  
1ST SHUT-IN 45 MINUTES NO BLOW BACK  
2ND OPENING 20 MINUTES NO BLOW FLUSHED TOOL GOOD SURGE NO HELP CAME OUT OF THE HOLE NO FINAL SHUT-IN TAKEN



## PRESSURE SUMMARY

Time (Min.)	Pressure (psia)	Temp (deg F)	Annotation
0	1539.57	87.62	Initial Hydro-static
1	41.10	88.36	Open To Flow (1)
16	45.17	88.90	Shut-In(1)
60	675.71	89.79	End Shut-In(1)
61	46.91	89.60	Open To Flow (2)
82	52.19	90.14	Shut-In(2)
83	1525.64	90.72	Final Hydro-static

## Recovery

Length (ft)	Description	Volume (bbl)
10.00	DRILLING MUD	0.08

## Gas Rates

	Choke (inches)	Pressure (psia)	Gas Rate (Mcf/d)



# DRILL STEM TEST REPORT

TOOL DIAGRAM

TYLUKA OPERATIONS LLC

18-17S-14W

P.O. BOX 1213  
HAYS, KANSAS 67601

AXMAN FARMS 1-18

ATTN: JERAMY SCHWARTZ

Job Ticket: 01209

DST#: 3

Test Start: 2015.12.13 @ 08:50:00

## Tool Information

Drill Pipe:	Length: 2874.00 ft	Diameter: 3.80 inches	Volume: 40.31 bbl	Tool Weight: 2000.00 lb
Heavy Wt. Pipe:	Length: 311.00 ft	Diameter: 2.86 inches	Volume: 2.47 bbl	Weight set on Packer: 20000.00 lb
Drill Collar:	Length: 0.00 ft	Diameter: 2.25 inches	Volume: 0.00 bbl	Weight to Pull Loose: 65000.00 lb
			<u>Total Volume: 42.78 bbl</u>	Tool Chased 3.00 ft
Drill Pipe Above KB:	24.00 ft			String Weight: Initial 44000.00 lb
Depth to Top Packer:	3190.00 ft			Final 44000.00 lb
Depth to Bottom Packer:	ft			
Interval between Packers:	30.00 ft			
Tool Length:	59.00 ft			
Number of Packers:	2	Diameter: 6.75 inches		

Tool Comments:

## Tool Description

Tool Description	Length (ft)	Serial No.	Position	Depth (ft)	Accum. Lengths
Shut In Tool	5.00			3166.00	
Hydraulic tool	5.00			3171.00	
Jars	7.00			3178.00	
Safety Joint	2.00		Fluid	3180.00	
Top Packer	5.00			3185.00	
Packer	5.00			3190.00	29.00 Bottom Of Top Packer
Anchor	25.00			3215.00	
Recorder	0.00	9119	Inside	3215.00	
Recorder	0.00	9139	Outside	3215.00	
Bullnose	5.00			3220.00	30.00 Anchor Tool
<b>Total Tool Length:</b>	<b>59.00</b>				



# DRILL STEM TEST REPORT

**FLUID SUMMARY**

TYLUKA OPERATIONS LLC

**18-17S-14W**

P.O. BOX 1213  
HAYS, KANSAS 67601

**AXMAN FARMS 1-18**

Job Ticket: 01209

**DST#: 3**

ATTN: JERAMY SCHWARTZ

Test Start: 2015.12.13 @ 08:50:00

## Mud and Cushion Information

Mud Type: Gel Chem  
Mud Weight: 9.00 lb/gal  
Viscosity: 45.00 sec/qt  
Water Loss: 8.80 in<sup>3</sup>  
Resistivity: ohm.m  
Salinity: 5800.00 ppm  
Filter Cake: 1.00 inches

Cushion Type:  
Cushion Length: ft  
Cushion Volume: bbl  
Gas Cushion Type:  
Gas Cushion Pressure: psia

Oil API: deg API  
Water Salinity: ppm

## Recovery Information

Recovery Table

Length ft	Description	Volume bbl
10.00	DRILLING MUD	0.079

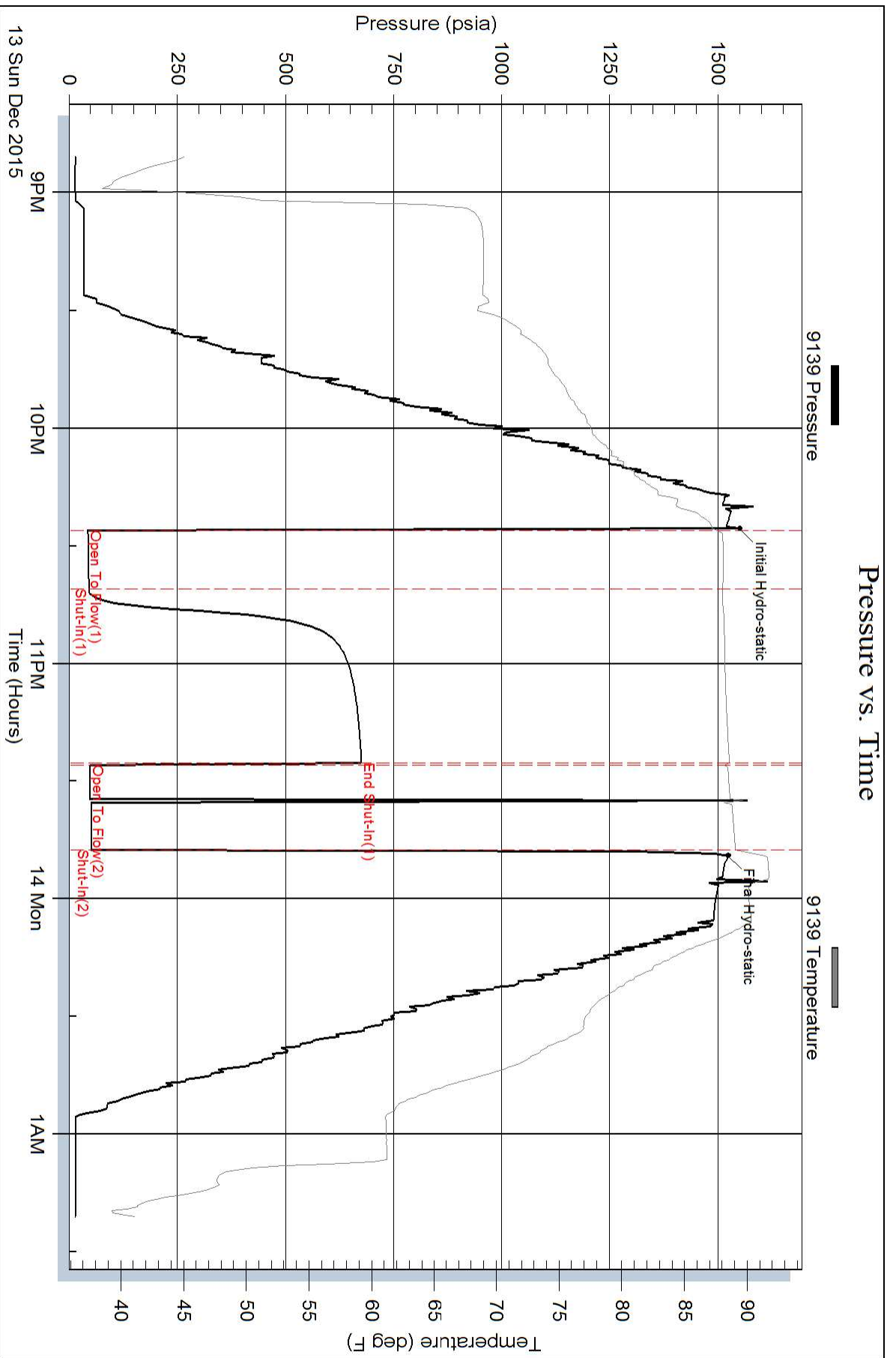
Total Length: 10.00 ft      Total Volume: 0.079 bbl

Num Fluid Samples: 0      Num Gas Bombs: 0      Serial #:

Laboratory Name:      Laboratory Location:

Recovery Comments:

### Pressure vs. Time



### Pressure vs. Time

