



**TRILOBITE
TESTING, INC.**

DRILL STEM TEST REPORT

Raymond Oil Co

24-14-33w Logan, Ks

p.o. box 48788
Wichita, Ks
67201-8788
ATTN: Max Lovely

Meyer #1

Job Ticket: 48272

DST#: 3

Test Start: 2015.12.16 @ 19:37:10

GENERAL INFORMATION:

Formation: **morrow**

Deviated: No Whipstock: 0.00 ft (KB)

Time Tool Opened: 21:17:55

Time Test Ended: 03:20:25

Test Type: Conventional Bottom Hole (Reset)

Tester: Shane McBride

Unit No: 84

Interval: 4348.00 ft (KB) To 4381.00 ft (KB) (TVD)

Reference Elevations: 2722.00 ft (KB)

Total Depth: 4381.00 ft (KB) (TVD)

2717.00 ft (CF)

Hole Diameter: 7.88 inches Hole Condition: Fair

KB to GR/CF: 5.00 ft

Serial #: 9120 Outside

Press @ Run Depth: 450.26 psig @ 4349.00 ft (KB)

Capacity: 8000.00 psig

Start Date: 2015.12.16

End Date: 2015.12.17

Last Calib.: 2015.12.17

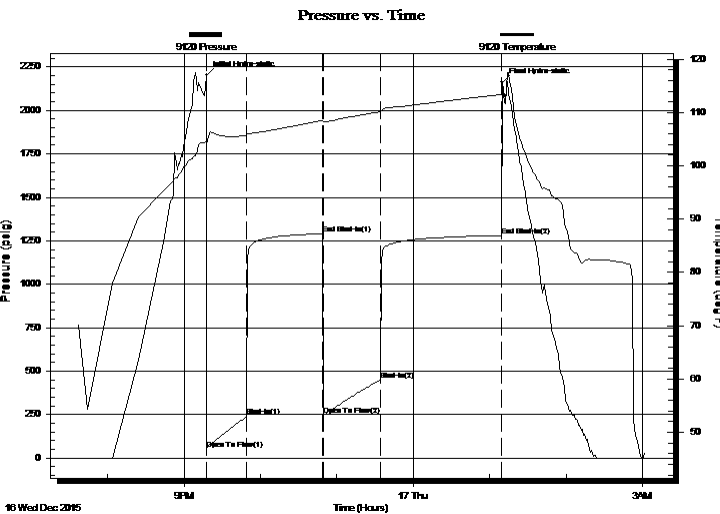
Start Time: 19:37:10

End Time: 03:02:25

Time On Btm: 2015.12.16 @ 21:17:40

Time Off Btm: 2015.12.17 @ 01:09:55

TEST COMMENT: B.O.B. in 10 min.
No return
B.O.B in 13 min.
No return



PRESSURE SUMMARY

Time (Min.)	Pressure (psig)	Temp (deg F)	Annotation
0	2203.09	104.55	Initial Hydro-static
1	52.68	103.83	Open To Flow (1)
32	239.21	105.71	Shut-In(1)
92	1290.43	108.54	End Shut-In(1)
92	247.24	108.21	Open To Flow (2)
137	450.26	110.15	Shut-In(2)
232	1280.69	113.38	End Shut-In(2)
233	2160.97	114.85	Final Hydro-static

Recovery

Length (ft)	Description	Volume (bbl)
660.00	water 100%w	8.19
120.00	s m c w 10%m 90%w	1.68
140.00	m c w 35%m 65%w	1.96

Gas Rates

	Choke (inches)	Pressure (psig)	Gas Rate (Mcf/d)

* Recovery from multiple tests



**TRILOBITE
TESTING, INC.**

DRILL STEM TEST REPORT

Raymond Oil Co

24-14-33w Logan, Ks

p.o. box 48788
Wichita, Ks
67201-8788
ATTN: Max Lovely

Meyer #1

Job Ticket: 48272

DST#: 3

Test Start: 2015.12.16 @ 19:37:10

GENERAL INFORMATION:

Formation: **morrow**

Deviated: No Whipstock: 0.00 ft (KB)

Time Tool Opened: 21:17:55

Time Test Ended: 03:20:25

Test Type: Conventional Bottom Hole (Reset)

Tester: Shane McBride

Unit No: 84

Interval: 4348.00 ft (KB) To 4381.00 ft (KB) (TVD)

Reference Elevations: 2722.00 ft (KB)

Total Depth: 4381.00 ft (KB) (TVD)

2717.00 ft (CF)

Hole Diameter: 7.88 inches Hole Condition: Fair

KB to GR/CF: 5.00 ft

Serial #: 8938 Inside

Press @ Run Depth: psig @ 4349.00 ft (KB)

Capacity: 8000.00 psig

Start Date: 2015.12.16 End Date: 2015.12.17

Last Calib.: 2015.12.17

Start Time: 19:36:31 End Time: 03:02:01

Time On Btm:

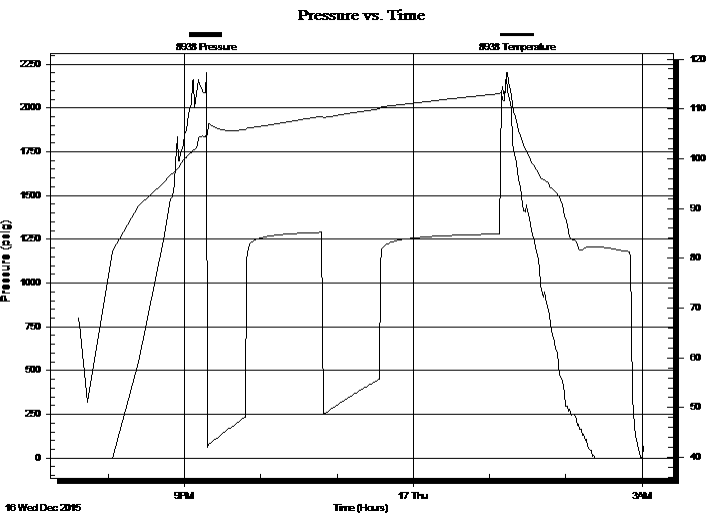
Time Off Btm:

TEST COMMENT: B.O.B. in 10 min.

No return

B.O.B in 13 min.

No return



PRESSURE SUMMARY

Time (Min.)	Pressure (psig)	Temp (deg F)	Annotation

Recovery

Length (ft)	Description	Volume (bbl)
660.00	water 100%w	8.19
120.00	s m c w 10%m 90%w	1.68
140.00	m c w 35%m 65%w	1.96

Gas Rates

	Choke (inches)	Pressure (psig)	Gas Rate (Mcf/d)

* Recovery from multiple tests



**TRILOBITE
TESTING, INC.**

DRILL STEM TEST REPORT

FLUID SUMMARY

Raymond Oil Co

24-14-33w Logan, Ks

p.o. box 48788
Wichita, Ks
67201-8788

Meyer #1

Job Ticket: 48272

DST#: 3

ATTN: Max Lovely

Test Start: 2015.12.16 @ 19:37:10

Mud and Cushion Information

Mud Type: Gel Chem

Cushion Type:

Oil API:

0 deg API

Mud Weight: 9.00 lb/gal

Cushion Length:

ft

Water Salinity:

23000 ppm

Viscosity: 59.00 sec/qt

Cushion Volume:

bbbl

Water Loss: 8.78 in³

Gas Cushion Type:

Resistivity: 0.00 ohm.m

Gas Cushion Pressure:

psig

Salinity: 4000.00 ppm

Filter Cake: 1.00 inches

Recovery Information

Recovery Table

Length ft	Description	Volume bbl
660.00	water 100%w	8.192
120.00	s m c w 10%m 90%w	1.683
140.00	m c w 35%m 65%w	1.964

Total Length: 920.00 ft Total Volume: 11.839 bbl

Num Fluid Samples: 0

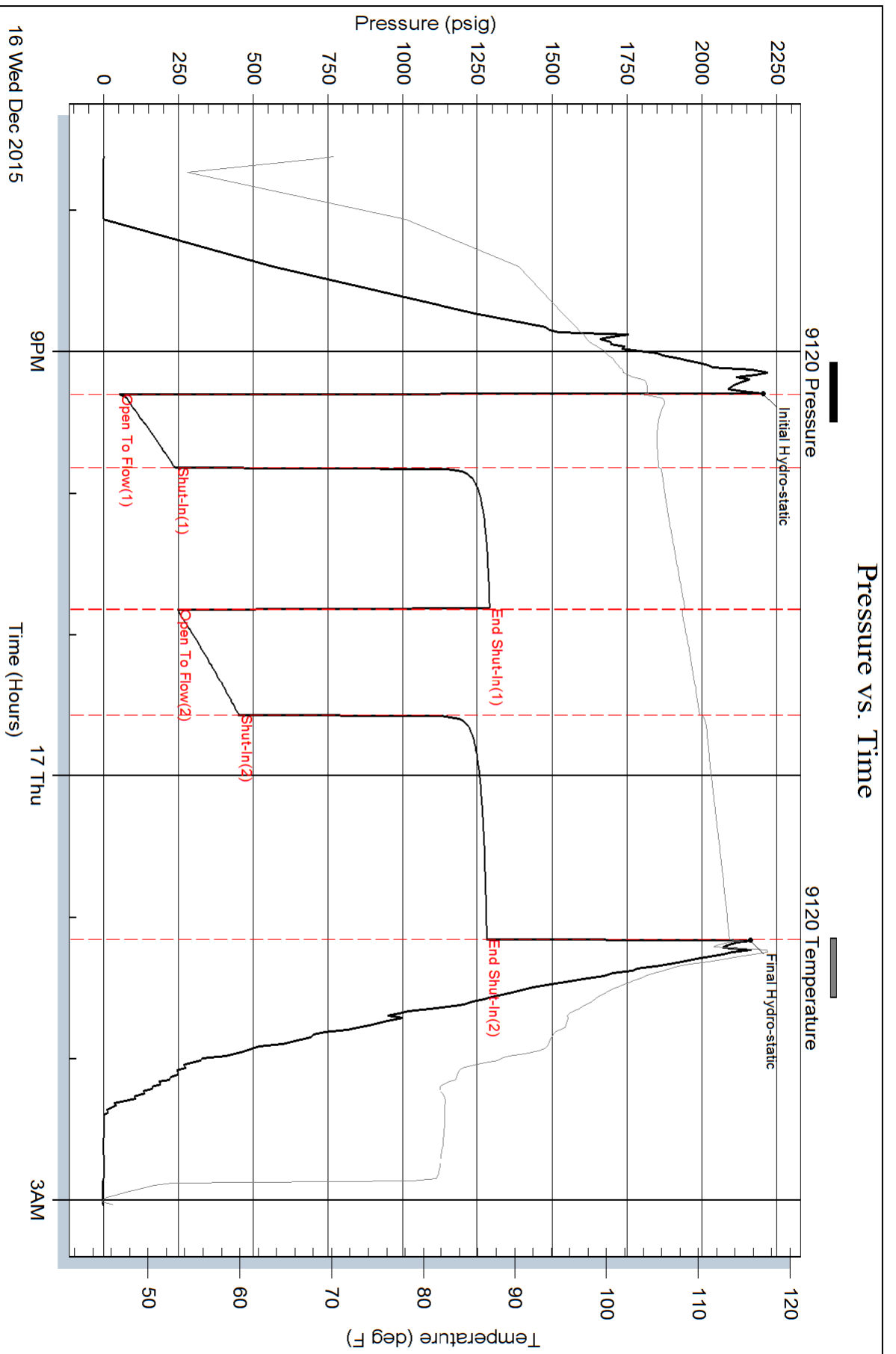
Num Gas Bombs: 0

Serial #:

Laboratory Name:

Laboratory Location:

Recovery Comments: rw .352 @ 57*f= 23,000 chlor



Serial #: 8938

Inside

Raymond Oil Co

Meyer #1

DST Test Number: 3

