

STATEMENT

STATEMENT

11783

**ELMORE'S INC.**  
Box 87 - 776 HWY 99  
Sedan, KS 67361  
Cell: (620) 249-2519  
Eve: (620) 725-5538

Date 7-20-15

Customer Tom Cook  
Address \_\_\_\_\_ State \_\_\_\_\_ Zip \_\_\_\_\_  
City \_\_\_\_\_

Qty.	Description	Price	Amount
3	Cement Tank	110	330.00
1	Bank Truck	85.00	85.00
3	Water Trucks	85.00	255.00
195	SKS Cement	21.00	4095.00
1400	1" Tubing	10	14000.00
500	1/2" Tubing	10	5000.00
			20430.00
	Cemented Long Spring Tank		2500.00
	1440' 1/2" Surface with		3210.00
	195 SKS Cement		

R.O.G. = 1 INTERCOM

PAID \$105

Thank You - We appreciate your business.

Rec'd. by \_\_\_\_\_

TERMS: Account due upon receipt of services. A 1 1/2% Service Charge, which is an annual percentage rate of 18% will be charged to accounts after 30 days.



GAMMA RAY  
NEUTRON  
CEMENT BOND  
COMPLETION LOG

Company FUEL SOURCE, INC.  
Well RIGGS #1 INJECTION  
Field PERU-SEDAN  
County CHAUTAUQUA  
State KANSAS

Company FUEL SOURCE, INC.  
Well RIGGS #1 INJECTION  
Field PERU-SEDAN  
County CHAUTAUQUA State KANSAS

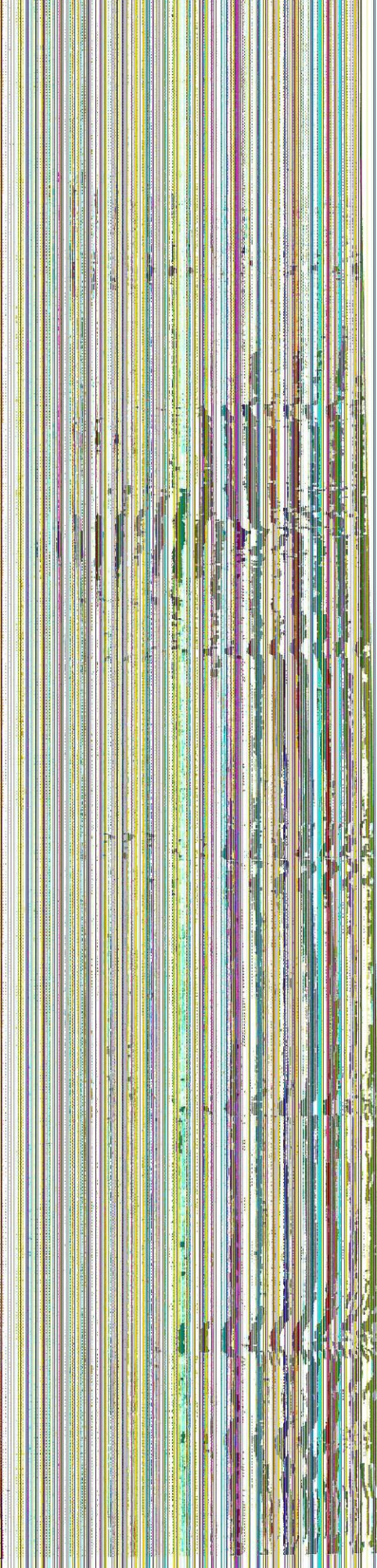
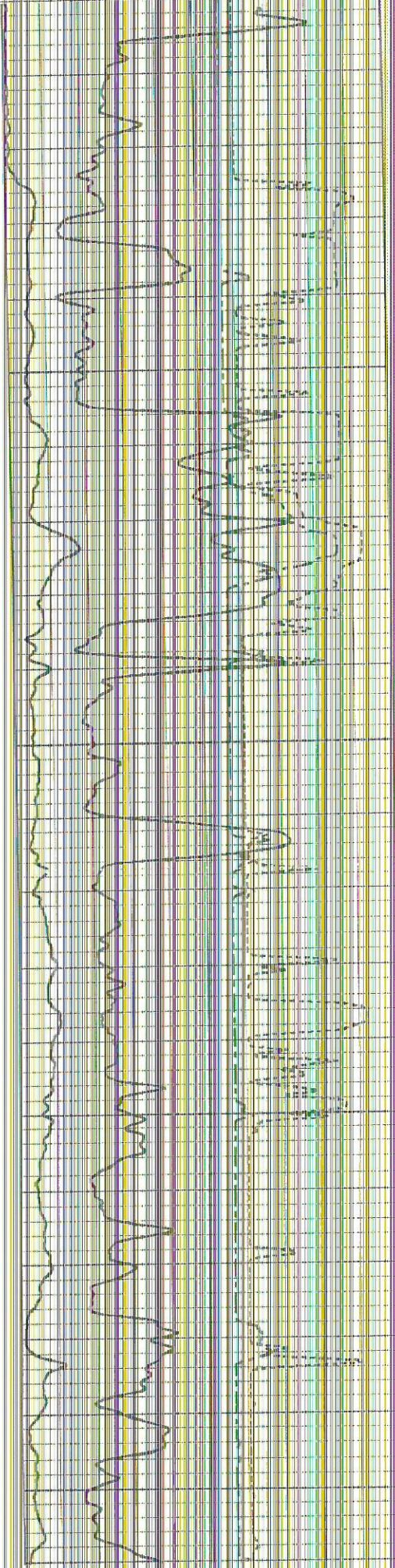
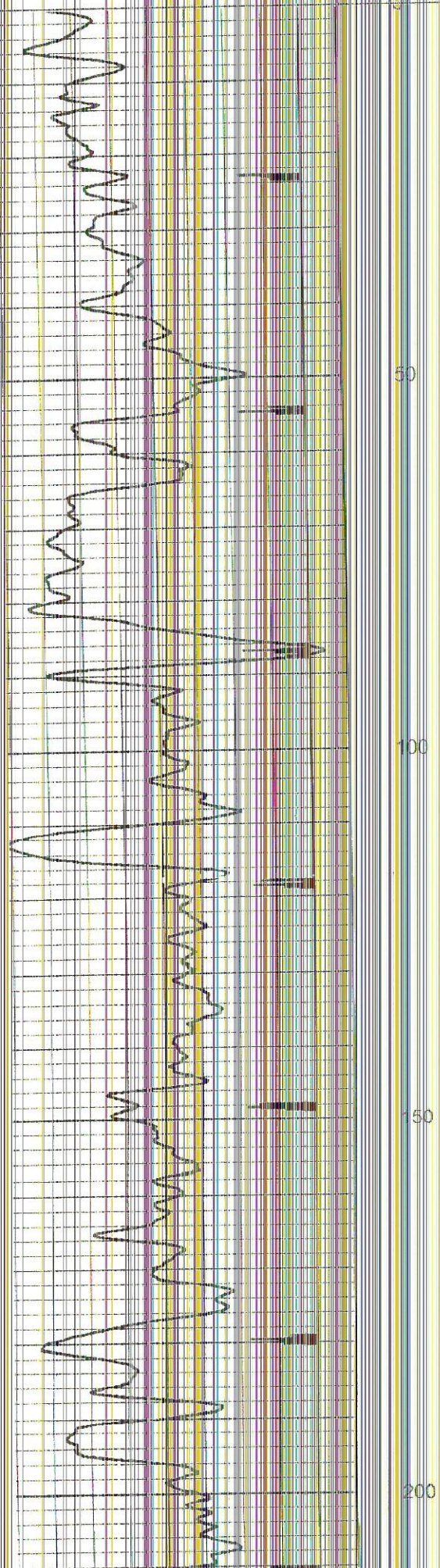
Location: API # 15-019-27522-00-00 Other Services

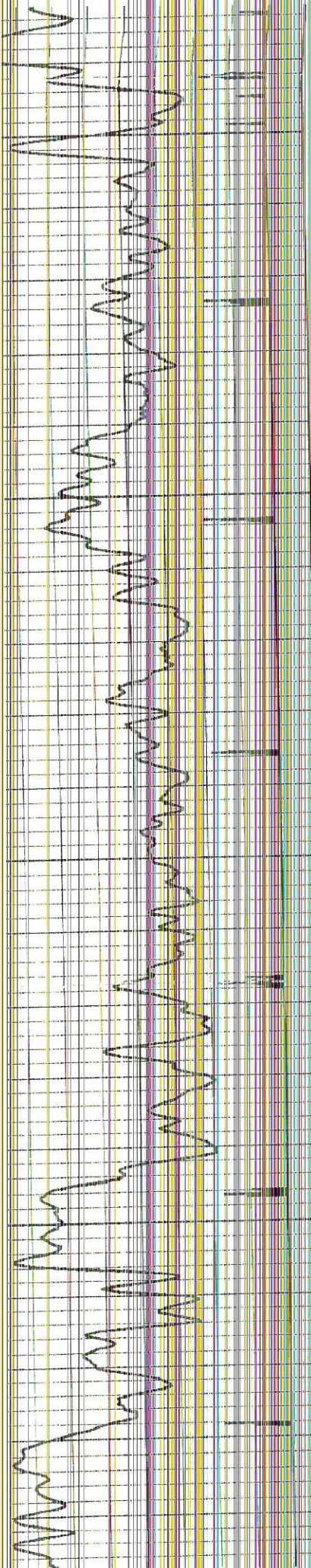
5110' FSL & 2170' FEL  
NE NW NW NE

SEC 8 TWP 34S RGE 11E

Permanent Datum	GL	Elevation	986' EST.
Log Measured From	GL		
Drilling Measured From	GL		

Date	8-12-15
Ran Number	1 NW
Depth Driller	
Depth Logger	1426.8'
Top Log Interval	0
Bottom Logged Interval	1426.8'
Fluid Level	FULL
Type Fluid	WATER
Production Casing	27/8" @ TD @ @
Max. Recorded Temp.	
Estimated Cement Top	
Calculated Cement Top	
Amount & Type Cement	
Amount & Type Admix	
Drilling Contractor	
Equipment Number	109
Location	
Recorded By	SANBORN, G.
Witnessed By	CAST, T.



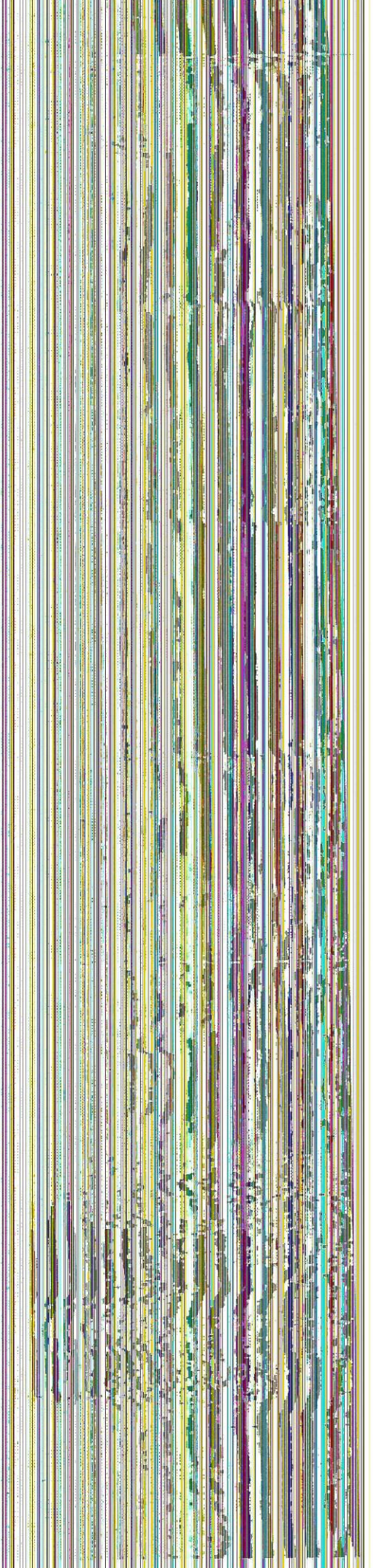
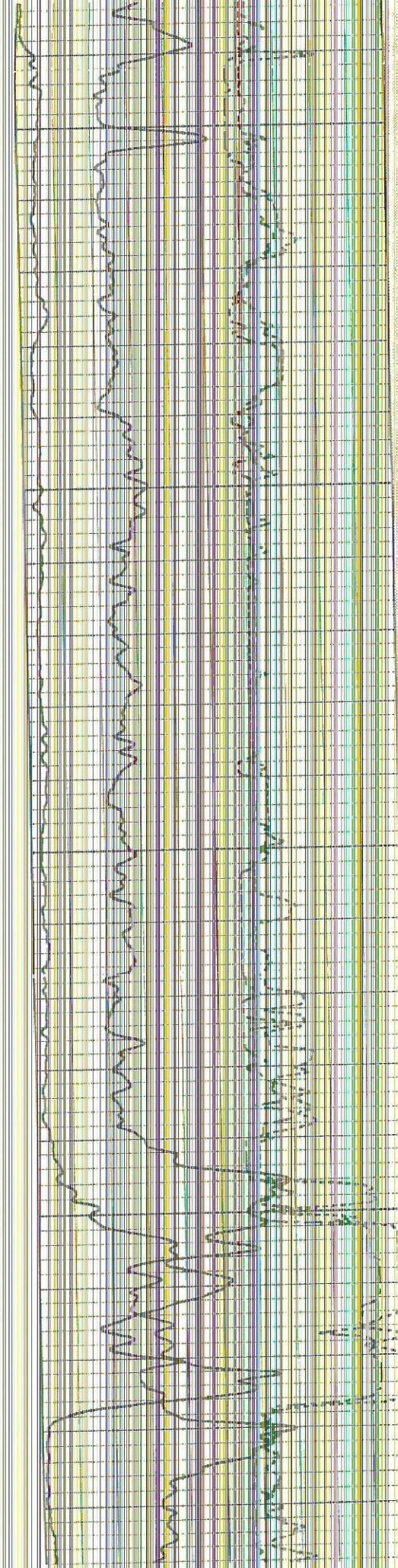


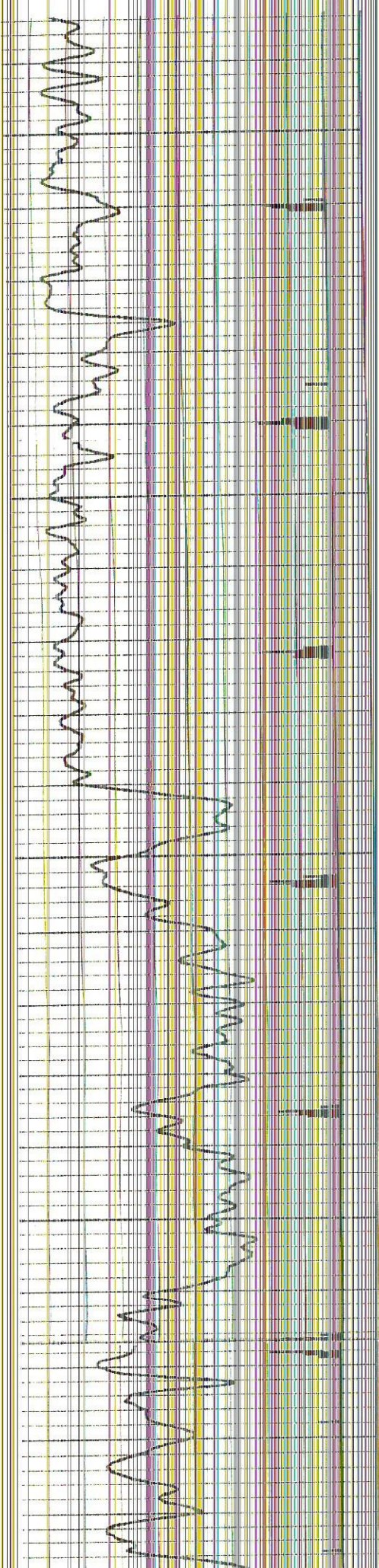
250

300

350

400



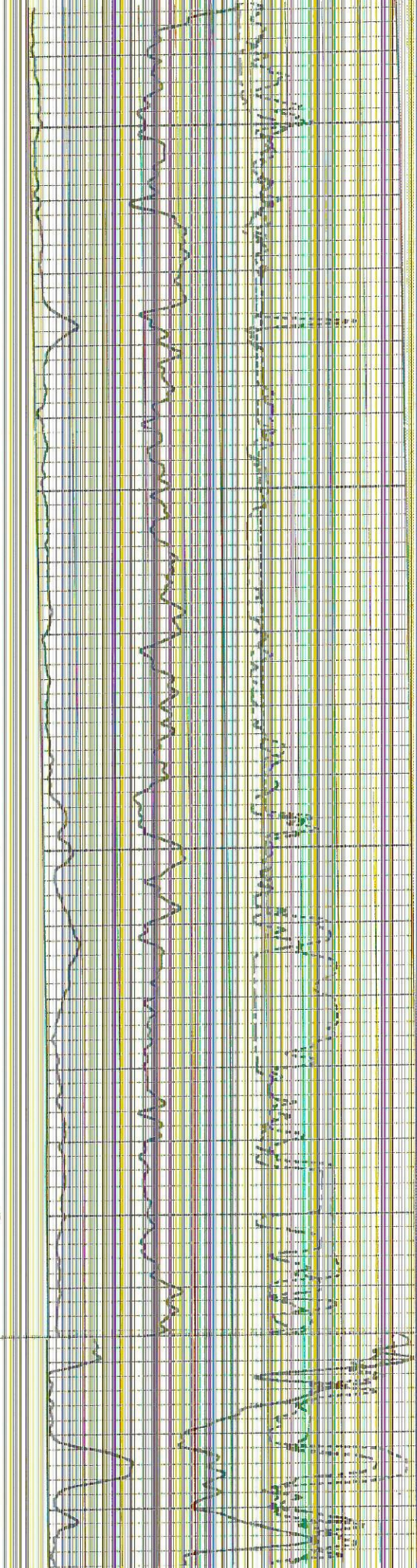


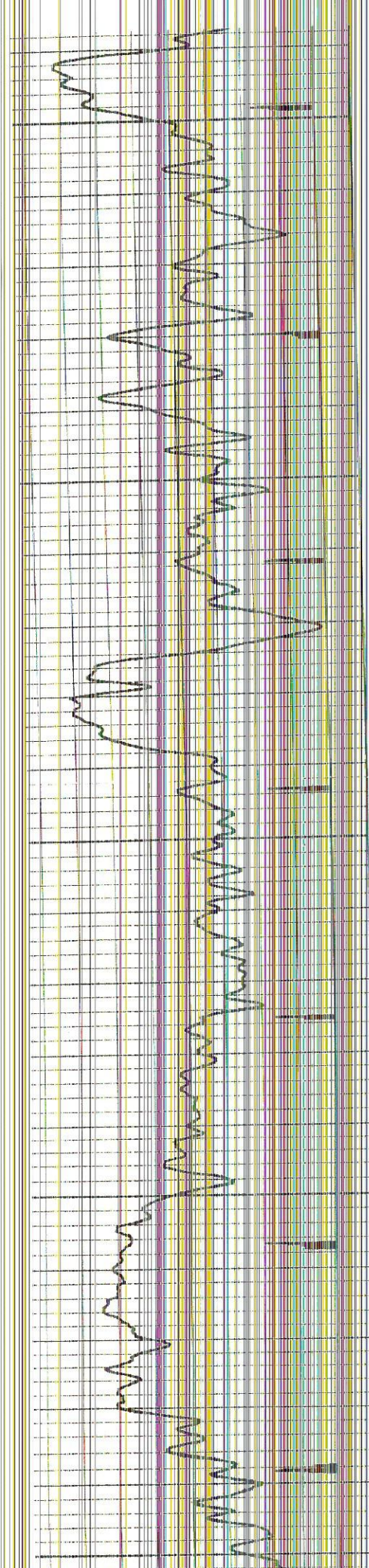
450

500

550

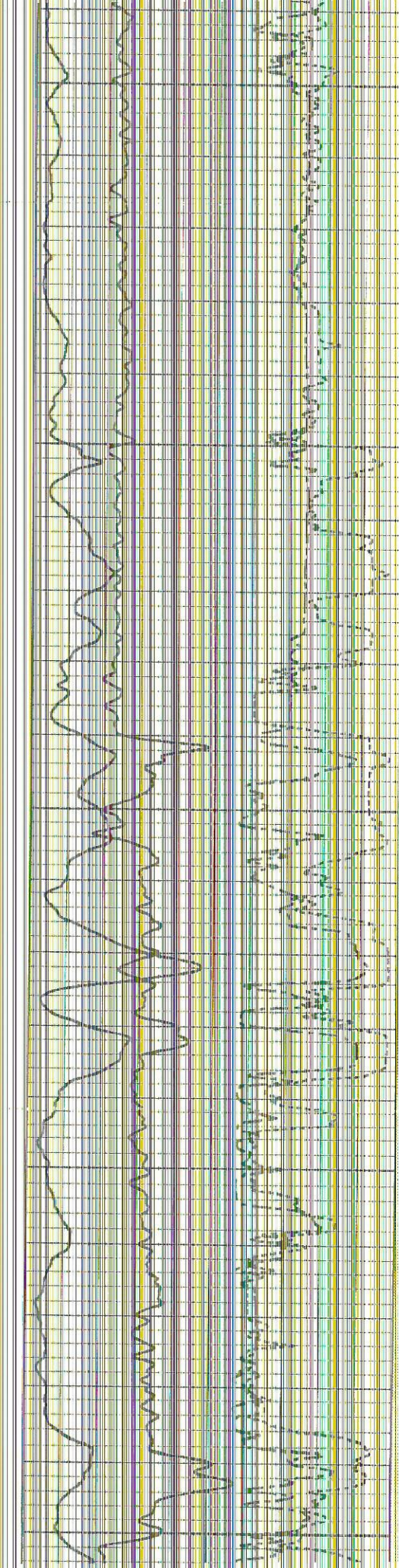
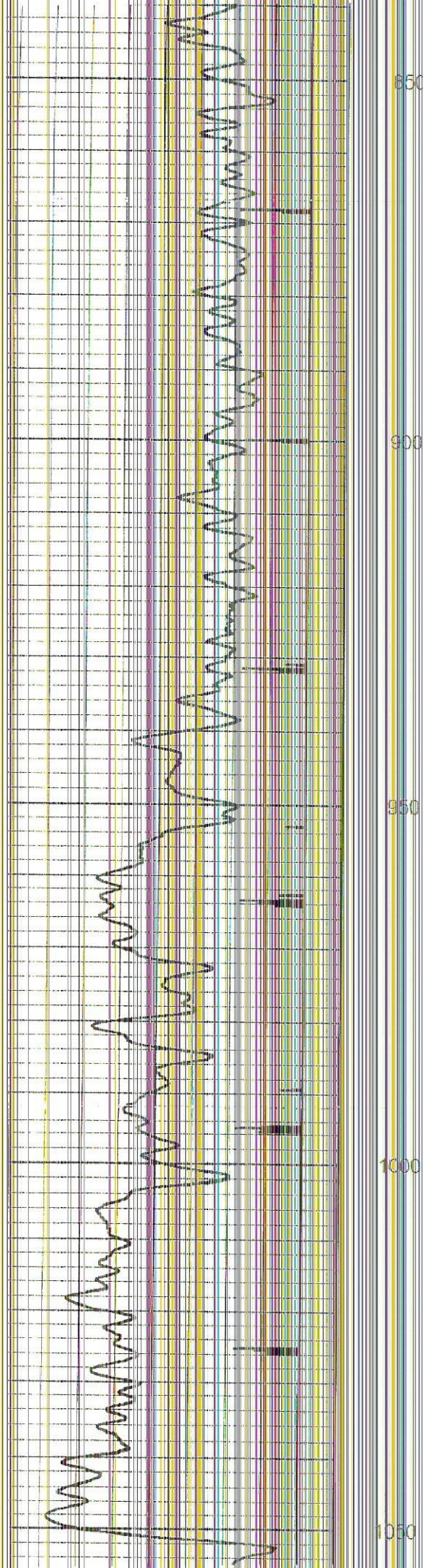
600

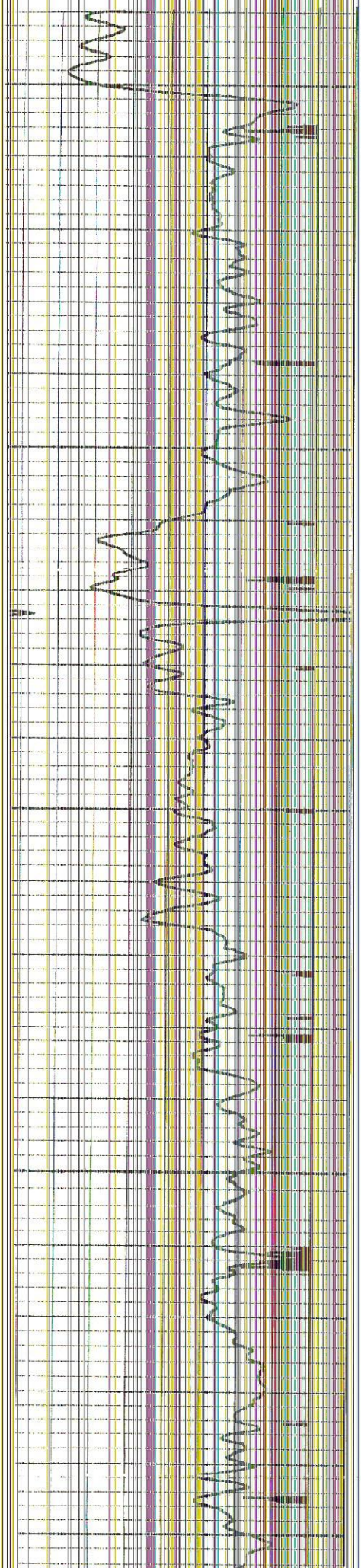




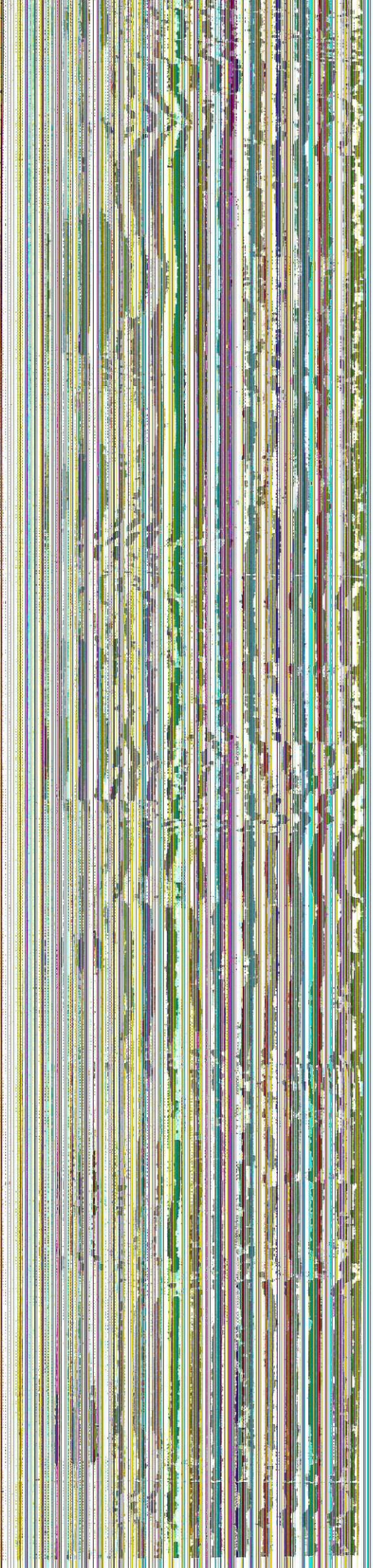
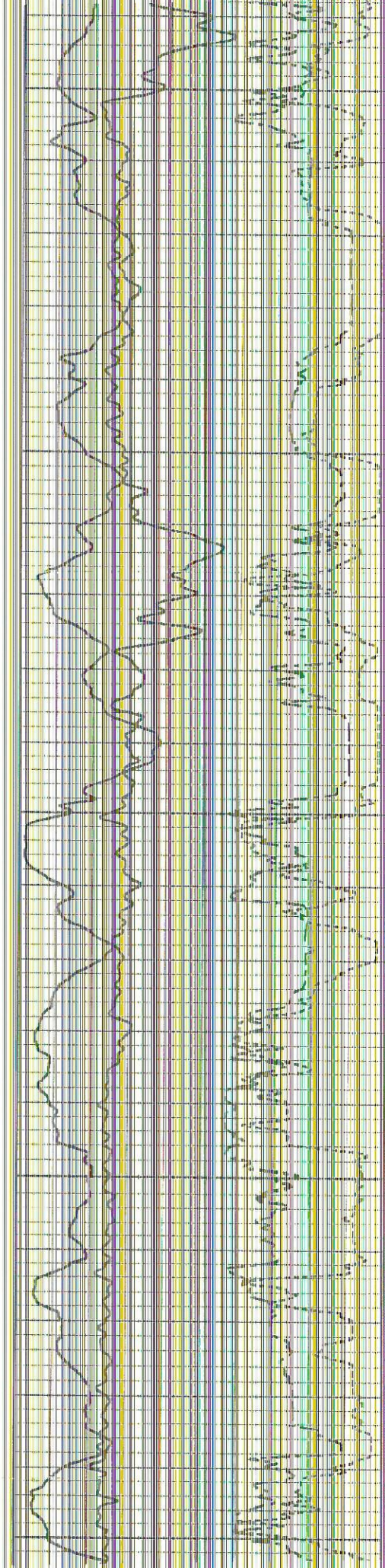
650  
700  
750  
800  
850



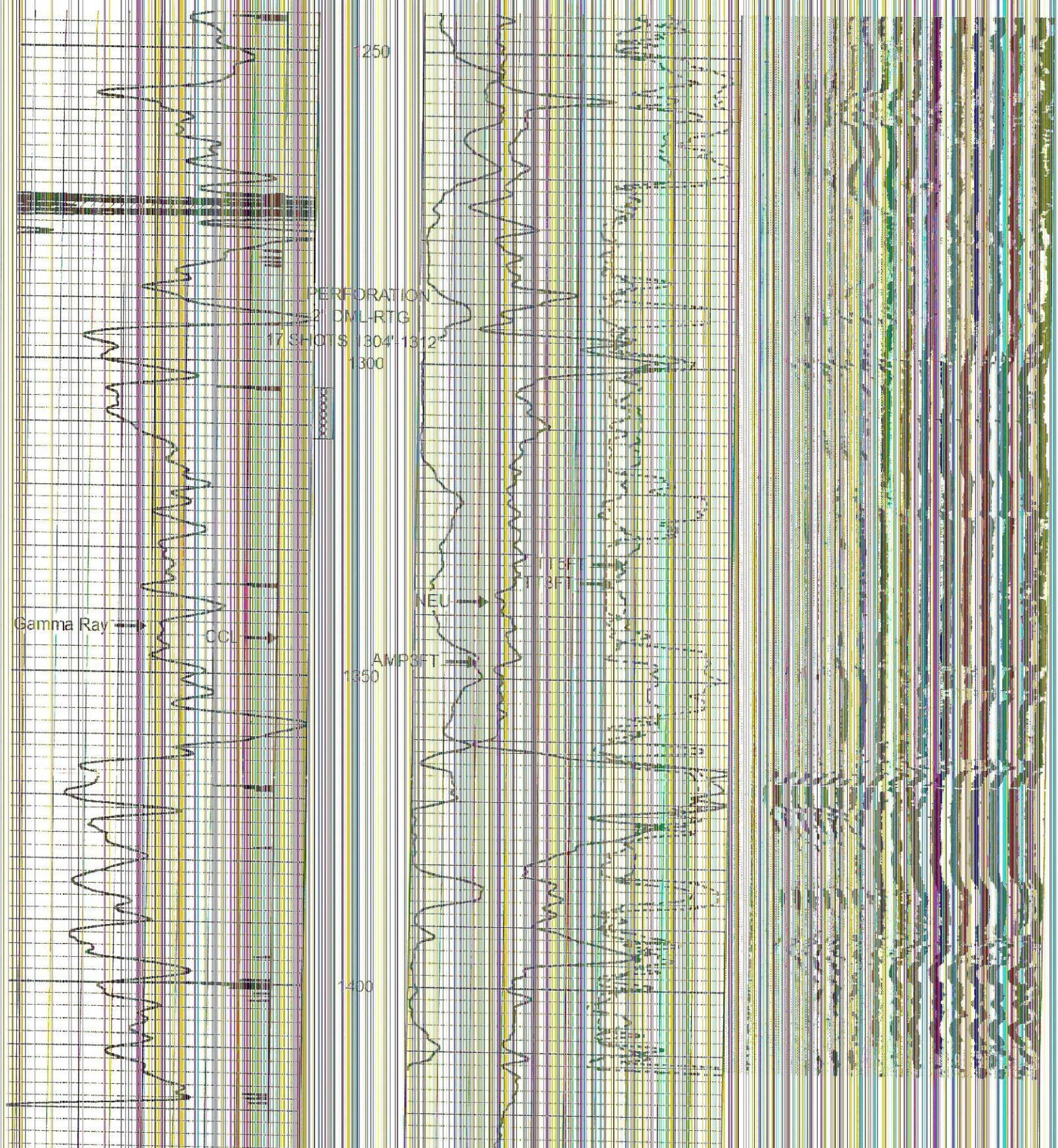




1050  
1100  
1150  
1200  
1250







Gamma Ray	150	AMP3FT (mV)	100 200	VDL	1200
gr	300	TT3FT (usec)	200		
CCL	-1	TT3FT (usec)	200		
		NEU (cps)	1500		