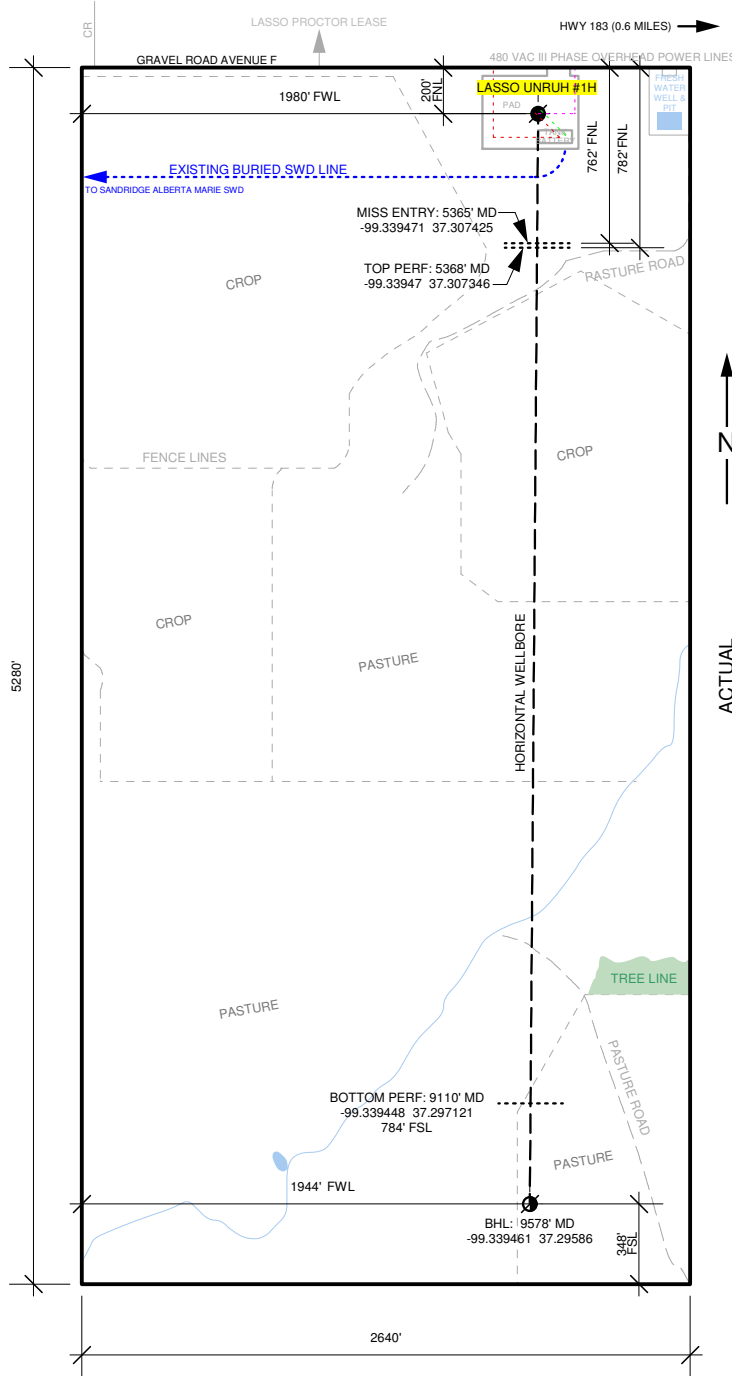


LASSO ENERGY LLC UNRUH 1H 11/30/2015
 OPERATOR LEASE WELL NO. DATE

COMANCHE KANSAS 36 31S 19W
 COUNTY STATE S T R

2124' GL 200' FNL, 1980' FWL OF SEC
 ELEVATION SURFACE LOCATION

JUST W2 OF SECTION SHOWN BELOW



LASSO UNRUH LEASE

COMANCHE COUNTY, KANSAS
 COLDWATER NORTHWEST FIELD
 36-T31S-R19W (ENTIRE W2)
 320 GROSS ACRES / 260 NET ACRES
 NRI: 81.25%
 HELD BY LEASE

- - - - - 480 VAC THREE PHASE
- - - - - GAS PIPELINE
- - - - - WATER DISPOSAL LINE
- - - - - LEAD (OIL & WATER) LINE
- - - - - LEASE ROAD

11/17/2015
 SURVEYED

W2 OF SECTION SHOWN ABOVE