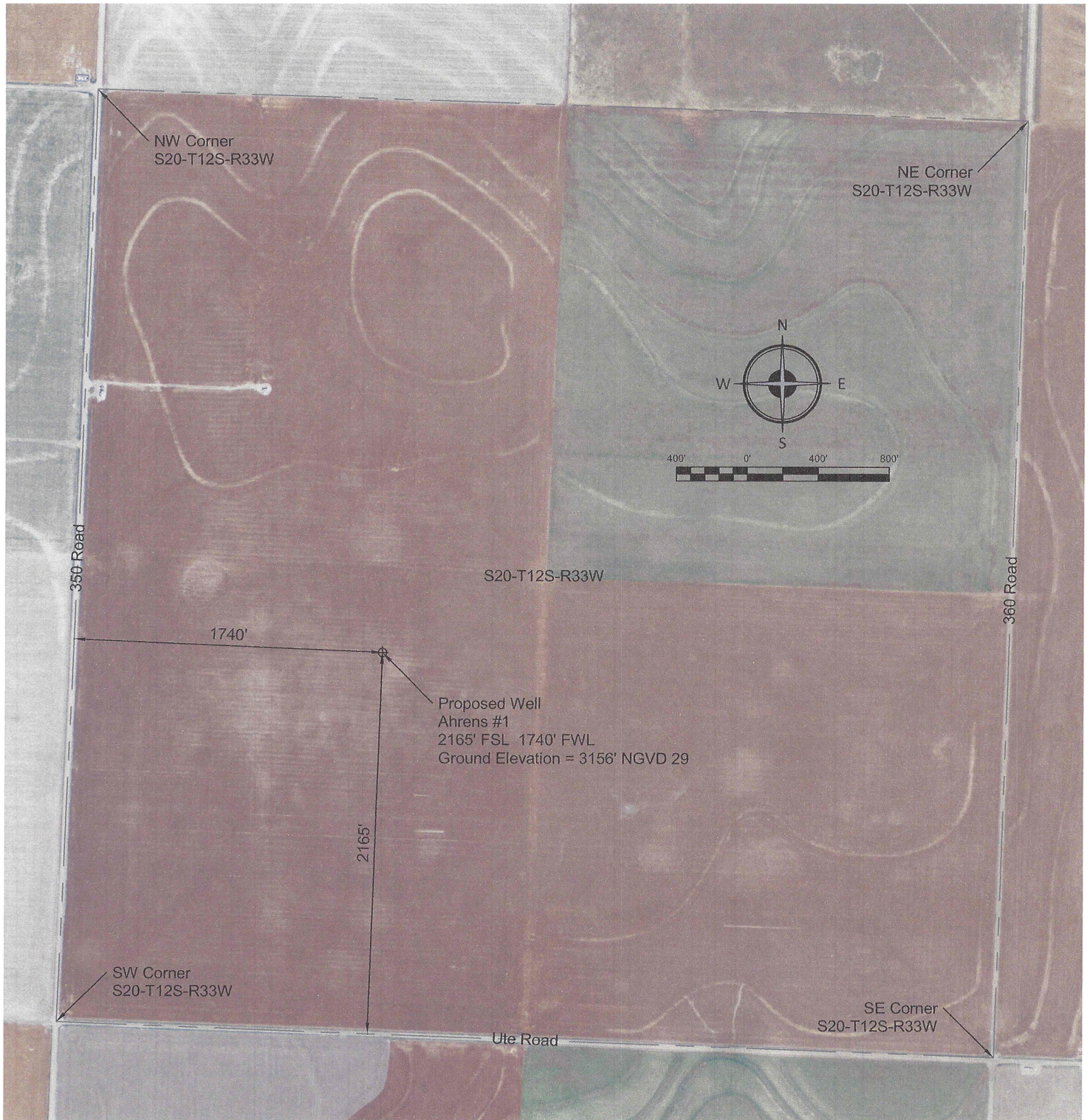


STAKE OIL WELL

Ahrens #1 in the Southwest Quarter of Section 20, Township 12 South, Range 33 West
Logan County, Kansas



SURVEY NOTES:

1. Elevation based on USGS 7.5 minute quad map titled "RUSSELL SPRINGS NE". Elevations are on the NGVD 1929 datum.
2. Staked coordinates of proposed well Ahrens #1 (NAD83): Latitude = N38°59'40.92" Longitude = W101°00'41.97"

Bickle Energies LLC
Matt Bickle, President

DRIGGS DESIGN GROUP, PA

Surveying Engineering Planning

James Meis, PS 1533
203 E 7th, Suite D, Hays, Kansas 67601
jmeis@driggsdesign.com (785) 650-9864

Project No: 2015-097
Date: 01-01-2016
Scale: 1" = 800'
Sheet No: 1 of 1
Drawn By: JM