



TRILOBITE TESTING, INC

DRILL STEM TEST REPORT

Shakespeare Oil Co
 202 West Main St
 Salem, IL
 62881-1519
 ATTN: Tim Priest

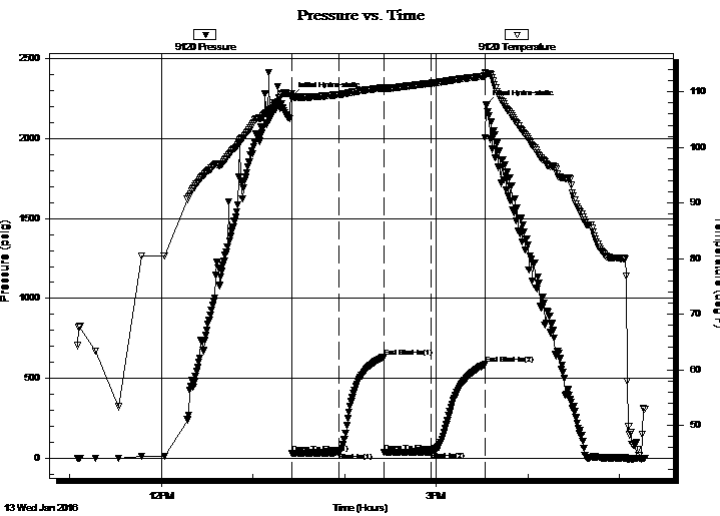
15-17-34 Scott, Ks
Nightengale #1-15
 Job Ticket: 48274 **DST#: 1**
 Test Start: 2016.01.13 @ 11:05:20

GENERAL INFORMATION:

Formation: **Marmaton A**
 Deviated: No Whipstock: 0.00 ft (KB)
 Time Tool Opened: 13:25:35
 Time Test Ended: 17:25:35
Interval: 4448.00 ft (KB) To 4500.00 ft (KB) (TVD)
 Total Depth: 4500.00 ft (KB) (TVD)
 Hole Diameter: 7.88 inches Hole Condition: Fair
 Test Type: Conventional Bottom Hole (Initial)
 Tester: Shane McBride
 Unit No: 84
 Reference Elevations: 3092.00 ft (KB)
 3083.00 ft (CF)
 KB to GR/CF: 9.00 ft

Serial #: 9120 Outside
 Press@RunDepth: 40.68 psig @ 4449.00 ft (KB) Capacity: 8000.00 psig
 Start Date: 2016.01.13 End Date: 2016.01.13 Last Calib.: 2016.01.13
 Start Time: 11:05:20 End Time: 17:16:35 Time On Btm: 2016.01.13 @ 13:25:20
 Time Off Btm: 2016.01.13 @ 15:32:50

TEST COMMENT: 1/4 "in @ open died back to weak surface blow
 No return
 No blow
 No return



PRESSURE SUMMARY

Time (Min.)	Pressure (psig)	Temp (deg F)	Annotation
0	2261.04	109.72	Initial Hydro-static
1	28.83	108.88	Open To Flow (1)
31	36.28	109.52	Shut-In(1)
61	635.02	110.77	End Shut-In(1)
61	36.70	110.47	Open To Flow (2)
92	40.68	111.57	Shut-In(2)
127	587.12	112.84	End Shut-In(2)
128	2211.39	113.23	Final Hydro-static

Recovery

Length (ft)	Description	Volume (bbl)
5.00	mud w/oil spots 100%m	0.02
0.00	show of free oil on top 2" in	0.00

Gas Rates

Choke (inches)	Pressure (psig)	Gas Rate (Mcf/d)



TRILOBITE TESTING, INC

DRILL STEM TEST REPORT

Shakespeare Oil Co

15-17-34 Scott, Ks

202 West Main St
Salem, Il
62881-1519
ATTN: Tim Priest

Nightengale #1-15

Job Ticket: 48274 **DST#: 1**
Test Start: 2016.01.13 @ 11:05:20

GENERAL INFORMATION:

Formation: **Marmaton A**
Deviated: No Whipstock: 0.00 ft (KB)
Time Tool Opened: 13:25:35
Time Test Ended: 17:25:35
Interval: **4448.00 ft (KB) To 4500.00 ft (KB) (TVD)**
Total Depth: 4500.00 ft (KB) (TVD)
Hole Diameter: 7.88 inches Hole Condition: Fair
Test Type: Conventional Bottom Hole (Initial)
Tester: Shane McBride
Unit No: 84
Reference Elevations: 3092.00 ft (KB)
3083.00 ft (CF)
KB to GR/CF: 9.00 ft

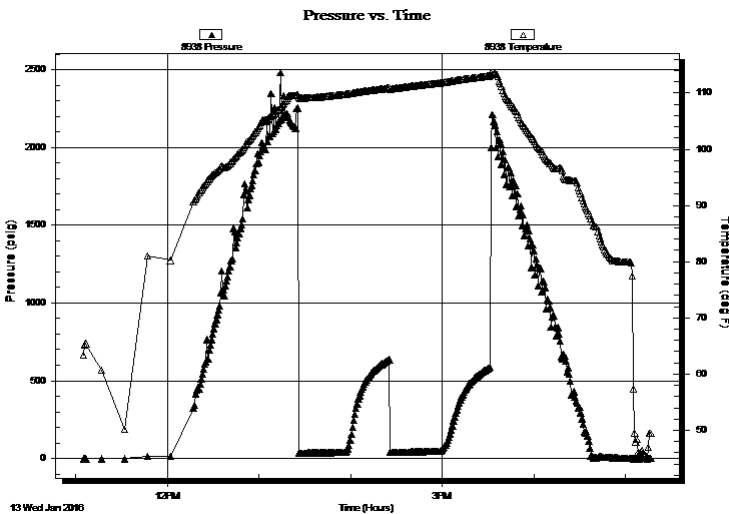
Serial #: 8938

Inside

Press@RunDepth: psig @ 4449.00 ft (KB) Capacity: 8000.00 psig
Start Date: 2016.01.13 End Date: 2016.01.13 Last Calib.: 2016.01.13
Start Time: 11:05:18 End Time: 17:16:33 Time On Btm:
Time Off Btm:

TEST COMMENT: 1/4 "in @ open died back to weak surface blow
No return
No blow
No return

PRESSURE SUMMARY



Time (Min.)	Pressure (psig)	Temp (deg F)	Annotation

Recovery

Length (ft)	Description	Volume (bbl)
5.00	mud w/oil spots 100%m	0.02
0.00	show of free oil on top 2" in	0.00

Gas Rates

Choke (inches)	Pressure (psig)	Gas Rate (Mcf/d)



**TRILOBITE
TESTING, INC**

DRILL STEM TEST REPORT

FLUID SUMMARY

Shakespeare Oil Co

15-17-34 Scott, Ks

202 West Main St
Salem, Il
62881-1519
ATTN: Tim Priest

Nightengale #1-15

Job Ticket: 48274

DST#: 1

Test Start: 2016.01.13 @ 11:05:20

Mud and Cushion Information

Mud Type: Gel Chem

Cushion Type:

Oil API:

0 deg API

Mud Weight: 9.00 lb/gal

Cushion Length:

ft

Water Salinity:

0 ppm

Viscosity: 56.00 sec/qt

Cushion Volume:

bbbl

Water Loss: 7.98 in³

Gas Cushion Type:

Resistivity: 0.00 ohm.m

Gas Cushion Pressure:

psig

Salinity: 6000.00 ppm

Filter Cake: 1.00 inches

Recovery Information

Recovery Table

Length ft	Description	Volume bbbl
5.00	mud w /oil spots 100%m	0.025
0.00	show of free oil on top 2" in	0.000

Total Length: 5.00 ft Total Volume: 0.025 bbl

Num Fluid Samples: 0

Num Gas Bombs: 0

Serial #:

Laboratory Name:

Laboratory Location:

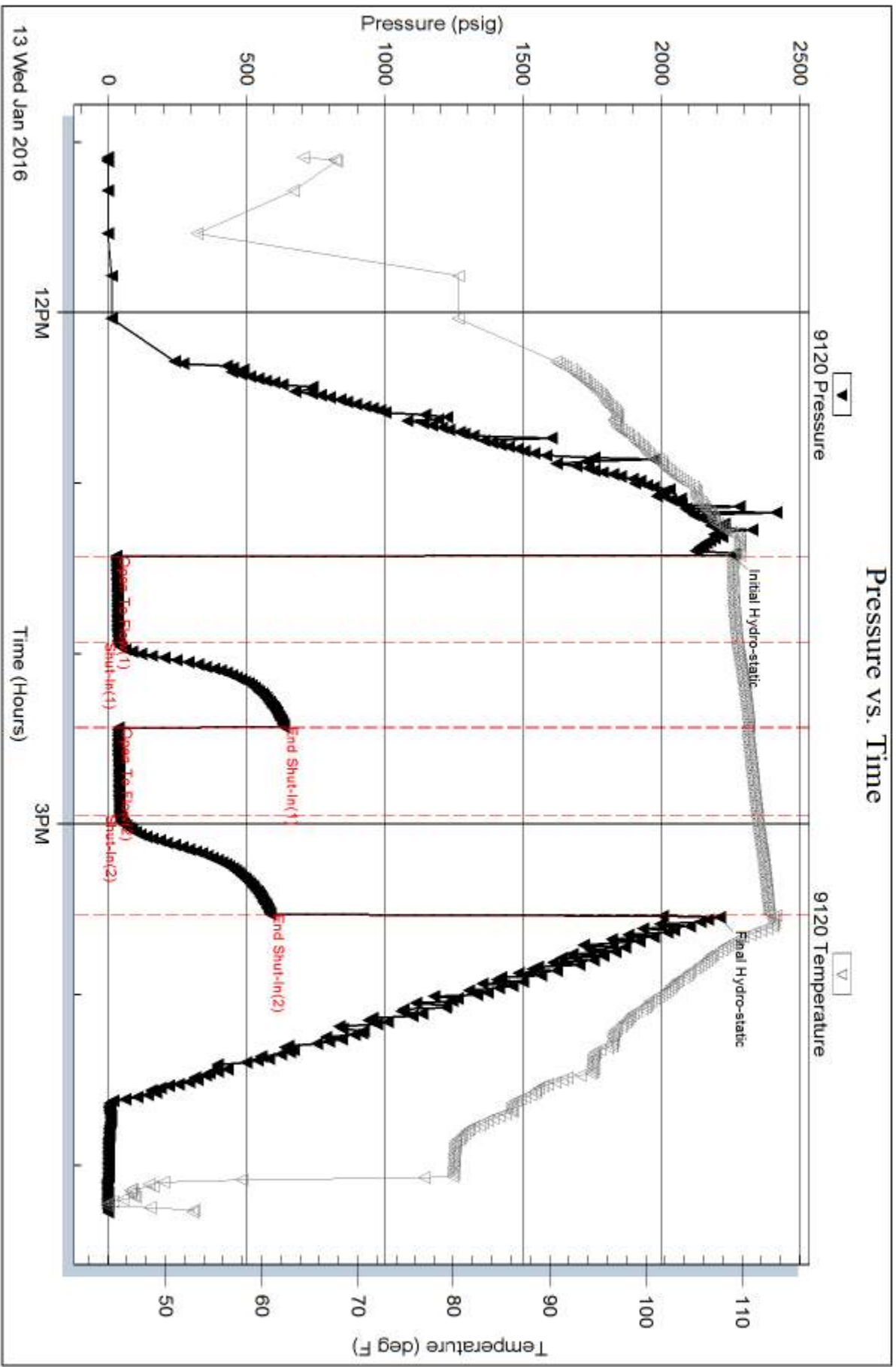
Recovery Comments:

Serial #: 9120

Outside Shakespeare Oil Co

Nightengale #1-15

DST Test Number: 1



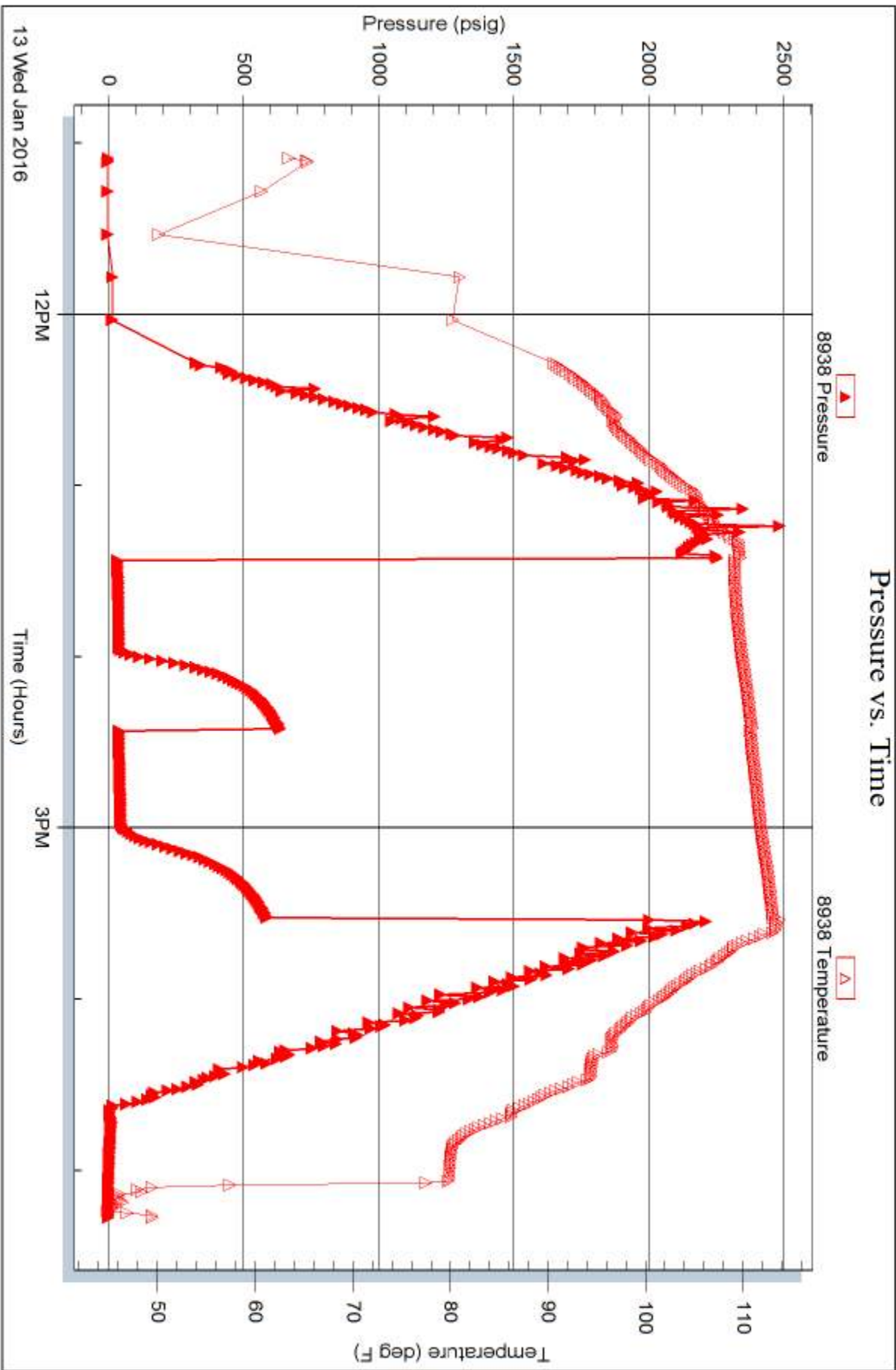
Serial #: 8938

Inside

Shakespeare Oil Co

Nightengale #1-15

DST Test Number: 1



13 Wed Jan 2016

Trilobite Testing, Inc

Ref. No: 48274

Printed: 2016.01.13 @ 19:16:19