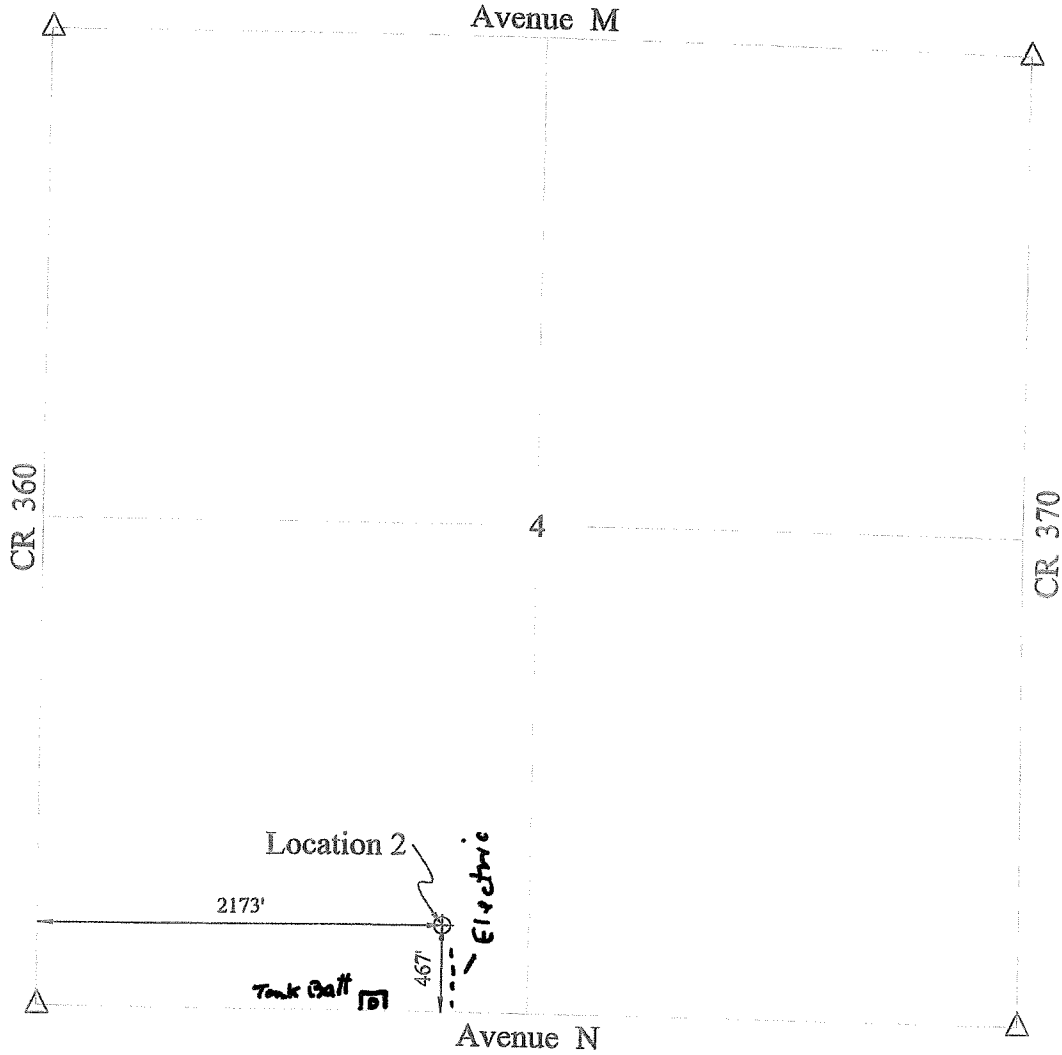


# WELL LOCATION

SW Quarter Section 4, Township 18 South, Range 16 West  
Rush County, Kansas



Blackstone Oil & Gas (Kansas)  
1301 McKinney St. Suite 2800  
Houston, TX 77010

Rush County, KS

Section 4, T18S R16W 2173' FWL & 467' FSL of SW/4

Elevation 1970.0

Set 1/2"x24" rebar at surface with lathe and T-Post  
Drilled Wheat



Blackstone Oil & Gas  
1301 McKinney St. Ste 2800  
Houston, TX 77010

ADVANCED LAND SURVEYING  
& DRAFTING

PO Box 27 Hays, KS 67601 Office: (785) 650-0139 Fax: (785) 650-0189

Sheet:	1 of 1	Project #:	16-001
Drawn:	DEC	Scale:	1" = 1000'
Approved:	DEC	Date:	01/12/16