



TEMPORARY ABANDONMENT WELL APPLICATION

All blanks must be complete

OPERATOR: License# _____
Name: _____
Address 1: _____
Address 2: _____
City: _____ State: _____ Zip: _____ + _____
Contact Person: _____
Phone: (_____) _____
Contact Person Email: _____
Field Contact Person: _____
Field Contact Person Phone: (_____) _____

API No. 15- _____
Spot Description: _____
____ - ____ - ____ - ____ Sec. _____ Twp. _____ S. R. _____ E W
_____ feet from N / S Line of Section
_____ feet from E / W Line of Section
GPS Location: Lat: _____, Long: _____
(e.g. xx.xxxxx) (e.g. -xxx.xxxxx)
Datum: NAD27 NAD83 WGS84
County: _____ Elevation: _____ GL KB
Lease Name: _____ Well #: _____
Well Type: (check one) Oil Gas OG WSW Other: _____
 SWD Permit #: _____ ENHR Permit #: _____
 Gas Storage Permit #: _____
Spud Date: _____ Date Shut-In: _____

	Conductor	Surface	Production	Intermediate	Liner	Tubing
Size						
Setting Depth						
Amount of Cement						
Top of Cement						
Bottom of Cement						

Casing Fluid Level from Surface: _____ How Determined? _____ Date: _____

Casing Squeeze(s): _____ to _____ w / _____ sacks of cement, _____ to _____ w / _____ sacks of cement. Date: _____
(top) (bottom) (top) (bottom)

Do you have a valid Oil & Gas Lease? Yes No

Depth and Type: Junk in Hole at _____ Tools in Hole at _____ Casing Leaks: Yes No Depth of casing leak(s): _____
(depth) (depth)

Type Completion: ALT. I ALT. II Depth of: DV Tool: _____ w / _____ sacks of cement Port Collar: _____ w / _____ sack of cement
(depth) (depth)

Packer Type: _____ Size: _____ Inch Set at: _____ Feet

Total Depth: _____ Plug Back Depth: _____ Plug Back Method: _____

Geological Data:

Formation Name	Formation Top	Formation Base	Completion Information
1. _____	At: _____	to _____ Feet	Perforation Interval _____ to _____ Feet or Open Hole Interval _____ to _____ Feet
2. _____	At: _____	to _____ Feet	Perforation Interval _____ to _____ Feet or Open Hole Interval _____ to _____ Feet

UNDER PENALTY OF PERJURY I HEREBY ATTEST THAT THE INFORMATION CONTAINED HEREIN IS TRUE AND CORRECT TO THE BEST OF MY KNOWLEDGE

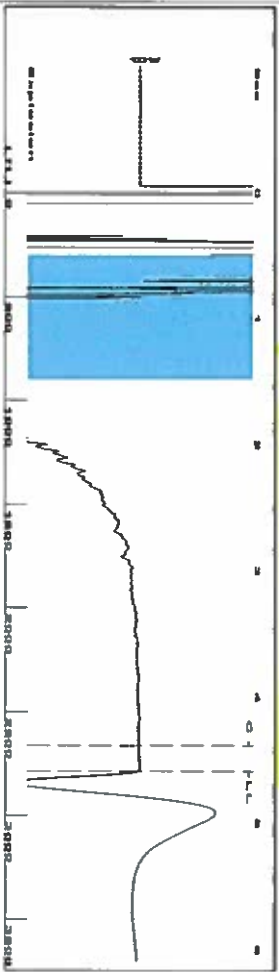
Submitted Electronically

Do NOT Write in This Space - KCC USE ONLY	Date Tested: _____	Results: _____	Date Plugged: _____	Date Repaired: _____	Date Put Back in Service: _____
	Review Completed by: _____ Comments: _____				
TA Approved: <input type="checkbox"/> Yes <input type="checkbox"/> Denied Date: _____					

Mail to the Appropriate KCC Conservation Office:

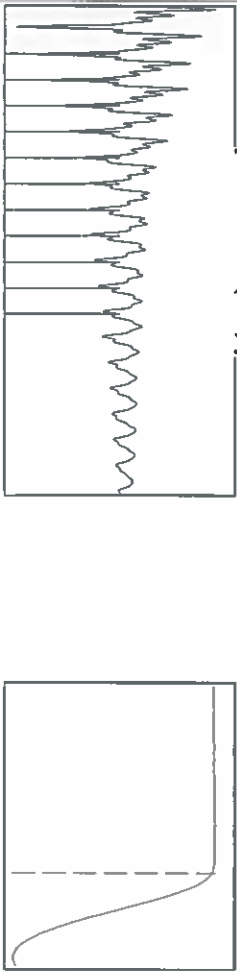
	KCC District Office #1 - 210 E. Frontview, Suite A, Dodge City, KS 67801	Phone 620.225.8888
	KCC District Office #2 / UPGS - 3450 N. Rock Road, Building 600, Suite 601, Wichita, KS 67226	Phone 316.630.4000
	KCC District Office #3 - 1500 SW Seventh Steet, Chanute, KS 66720	Phone 620.432.2300
	KCC District Office #4 - 2301 E. 13th Street, Hays, KS 67601-2651	Phone 785.625.0550

Group: Gas Wells Well: Hampton C-2 (acquired on: 02/06/16 15:07:13)



Filter Type High Pass
 Manual/Acoustic Velo 1185.05 ft/s
 Automatic Collar Count Yes
 Manual JTS/sec 18.6916
 Time 4.593 sec
 Joints 87.899 Jts
 Depth 2786.40 ft

[0.5 to 1.5 (Sec)]



Analysis Method: Automatic

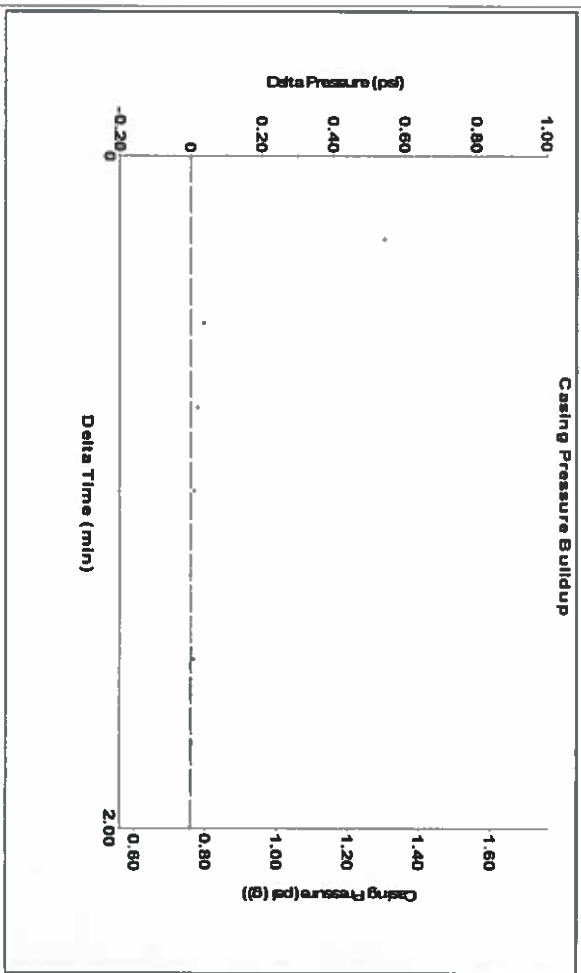
Group: Gas Wells Well: Hampton C-2 (acquired on: 02/06/16 15:07:13)

Production	Potential	Casing Pressure	Producing
Oil - - *	- - * BBL/D	0.8 psi (g)	Annular Gas Flow 0 Mscf/D
Water - - *	- - * BBL/D	Casing Pressure Buildup -0.0 psi	% Liquid 100 %
Gas - - *	- - * Mscf/D	2.00 min	
IPR Method Vogel	Gas/Liquid Interface Pressure 1.9 psi (g)		
PBHP/SBHP - - *			
Production Efficiency 0.0			
Oil 40 deg API	Liquid Level Depth 2786.40 ft		
Water 1.05 Sp.Gr.H2O	Pump Intake Depth 2973.00 ft		
Gas 0.79 Sp.Gr.AIR	Formation Depth 2948.00 ft		
Acoustic Velocity 1213.32 ft/s			



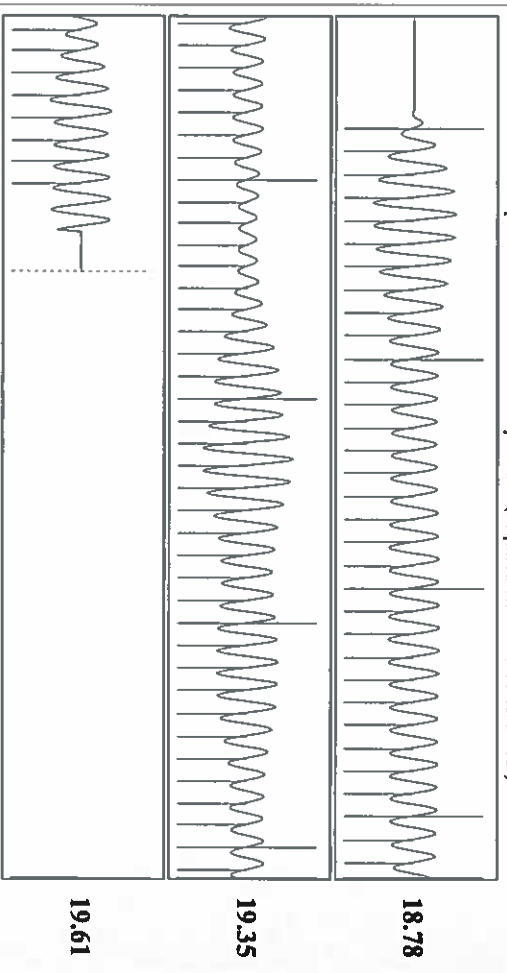
Pump Intake 65.4 psi (g)
 Producing BHP 56.9 psi (g)
 Static BHP - - * psi (g)

Group: Gas Wells Well: Hampton C-2 (acquired on: 02/06/16 15:07:13)



Change in Pressure -0.00 psi
 Change in Time 2.00 min
 PTT 6716
 Range 0 - 7 psi

Group: Gas Wells Well: Hampton C-2 (acquired on: 02/06/16 15:07:13)



Acoustic Velocity 1213.32 ft/s
 Joints Per Second 19.1376 Jts/sec
 Depth to liquid level 2786.4 ft
 Automatic Collar Count Yes

Joints counted 79
 Joints to liquid level 87.899
 Filter Width 16.6916
 Time to 1st Collar 0.26

Conservation Division
District Office No. 1
210 E. Frontview, Suite A
Dodge City, KS 67801



Phone: 620-225-8888
Fax: 620-225-8885
<http://kcc.ks.gov/>

Jay Scott Emler, Chairman
Shari Feist Albrecht, Commissioner
Pat Apple, Commissioner

Sam Brownback, Governor

February 16, 2016

Katherine McClurkan
Merit Energy Company, LLC
13727 Noel Road, Suite 1200
Dallas, TX 75240

Re: Temporary Abandonment
API 15-067-20340-00-00
HAMPTON C 2
NE/4 Sec.01-29S-36W
Grant County, Kansas

Dear Katherine McClurkan:

"Your temporary abandonment (TA) application for the well listed above has been approved. In accordance with K.A.R. 82-3-111 the TA status of this well will expire 02/16/2017.

- * If you return this well to service or plug it, please notify the District Office.
- * If you sell this well you are required to file a Transfer of Operator form, T-1.
- * If the well will remain temporarily abandoned, you must submit a new TA application, CP-111, before 02/16/2017.

You may contact me at the number above if you have questions.

Very truly yours,

Michael Maier"