



TEMPORARY ABANDONMENT WELL APPLICATION

OPERATOR: License# _____
 Name: _____
 Address 1: _____
 Address 2: _____
 City: _____ State: _____ Zip: _____ + _____
 Contact Person: _____
 Phone: (_____) _____
 Contact Person Email: _____
 Field Contact Person: _____
 Field Contact Person Phone: (_____) _____

API No. 15- _____
 Spot Description: _____
 _____ - _____ - _____ - _____ Sec. _____ Twp. _____ S. R. _____ E W
 _____ feet from N / S Line of Section
 _____ feet from E / W Line of Section
 GPS Location: Lat: _____, Long: _____
(e.g. xx.xxxxx) (e.g. -xxx.xxxxx)
 Datum: NAD27 NAD83 WGS84
 County: _____ Elevation: _____ GL KB
 Lease Name: _____ Well #: _____
 Well Type: (check one) Oil Gas OG WSW Other: _____
 SWD Permit #: _____ ENHR Permit #: _____
 Gas Storage Permit #: _____
 Spud Date: _____ Date Shut-In: _____

	Conductor	Surface	Production	Intermediate	Liner	Tubing
Size						
Setting Depth						
Amount of Cement						
Top of Cement						
Bottom of Cement						

Casing Fluid Level from Surface: _____ How Determined? _____ Date: _____
 Casing Squeeze(s): _____ to _____ w / _____ sacks of cement, _____ to _____ w / _____ sacks of cement. Date: _____
(top) (bottom) (top) (bottom)
 Do you have a valid Oil & Gas Lease? Yes No
 Depth and Type: Junk in Hole at _____ Tools in Hole at _____ Casing Leaks: Yes No Depth of casing leak(s): _____
(depth) (depth)
 Type Completion: ALT. I ALT. II Depth of: DV Tool: _____ w / _____ sacks of cement Port Collar: _____ w / _____ sack of cement
(depth) (depth)
 Packer Type: _____ Size: _____ Inch Set at: _____ Feet
 Total Depth: _____ Plug Back Depth: _____ Plug Back Method: _____

Geological Data:

Formation Name	Formation Top	Formation Base	Completion Information
1. _____	At: _____	to _____ Feet	Perforation Interval _____ to _____ Feet or Open Hole Interval _____ to _____ Feet
2. _____	At: _____	to _____ Feet	Perforation Interval _____ to _____ Feet or Open Hole Interval _____ to _____ Feet

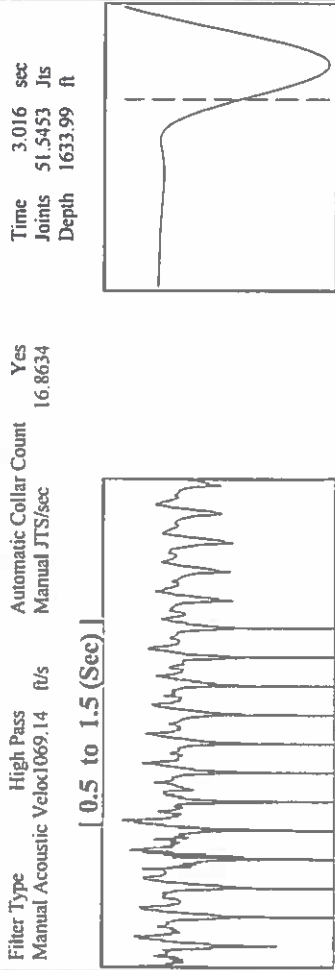
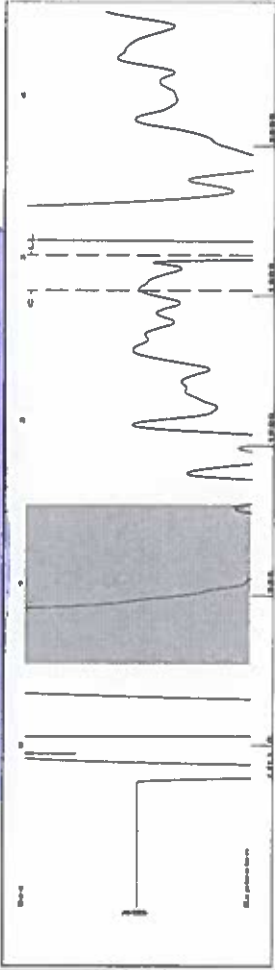
UNDER PENALTY OF PERJURY I HEREBY ATTEST THAT THE INFORMATION CONTAINED HEREIN IS TRUE AND CORRECT TO THE BEST OF MY KNOWLEDGE

Submitted Electronically

Do NOT Write in This Space - KCC USE ONLY	Date Tested: _____	Results: _____	Date Plugged: _____	Date Repaired: _____	Date Put Back in Service: _____
	Review Completed by: _____ Comments: _____				
TA Approved: <input type="checkbox"/> Yes <input type="checkbox"/> Denied Date: _____					

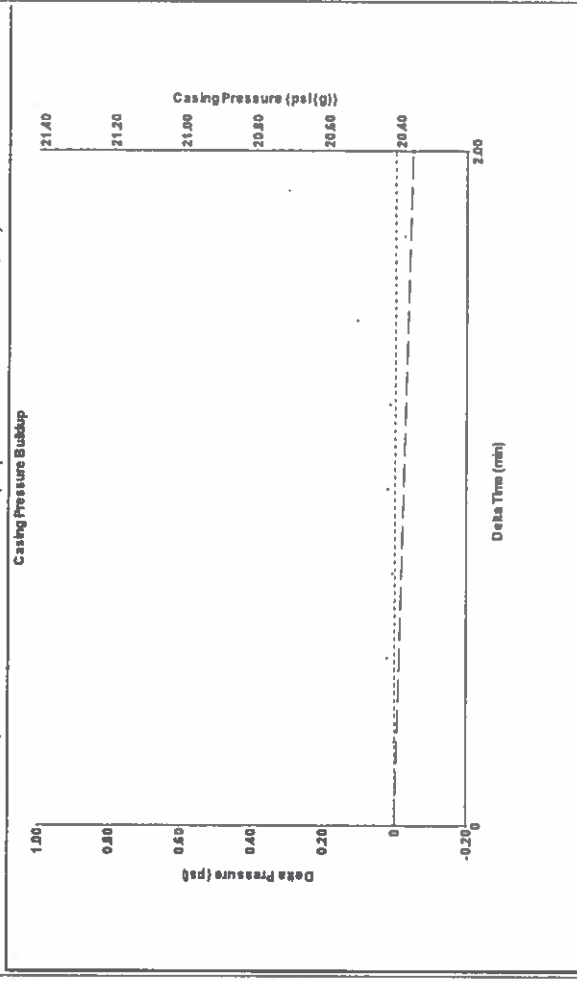
Mail to the Appropriate KCC Conservation Office:

	KCC District Office #1 - 210 E. Frontview, Suite A, Dodge City, KS 67801	Phone 620.225.8888
	KCC District Office #2 / UPGS - 3450 N. Rock Road, Building 600, Suite 601, Wichita, KS 67226	Phone 316.630.4000
	KCC District Office #3 - 1500 SW Seventh Steet, Chanute, KS 66720	Phone 620.432.2300
	KCC District Office #4 - 2301 E. 13th Street, Hays, KS 67601-2651	Phone 785.625.0550



Analysis Method: Automatic

Production	Potential	- * -	BBL/D	Casing Pressure	20.4	psi (g)
Oil	- * -	BBL/D	Casing Pressure Buildup	-0.0	psi	
Water	- * -	Mscf/D	Gas/Liquid Interface Pressure	22.2	psi (g)	
Gas	- * -					
IPR Method	Vogel	- * -				
PBHP/SBHP	- * -					
Production Efficiency	0.0					
Oil	40	deg API				
Water	1.05	Sp.Gr.H2O				
Gas	0.89	Sp.Gr.AIR				
Acoustic Velocity	1083.55	ft/s				
			Liquid Level Depth	1633.99	ft	
			Pump Intake Depth	- * -	ft	
			Formation Depth	4712.00	ft	
Formation Submergence						
Total Gaseous Liquid Column HT (TVD)						3078 ft
Equivalent Gas Free Liquid HT (TVD)						3078 ft
Acoustic Test						
			Producing			
			Annular			
			Gas Flow	- * -	Mscf/D	
			% Liquid	100	%	
			Pump Intake	- * -	psi (g)	
			Producing BHP	1421.7	psi (g)	
			Static BHP	- * -	psi (g)	



Change in Pressure: -0.05 psi
 Change in Time: 2.00 min
 Range: PT8746
 0 - ? psi

Acoustic Velocity: 1083.55 ft/s
 Joints Per Second: 17.0906 jts/sec
 Depth to liquid level: 1633.99 ft
 Automatic Collar Count: Yes

Joints counted: 43
 Joints to liquid level: 51.5453
 Filter Width: 14.8634
 Time to 1st Collar: 0.284

16.94
 17.41

Conservation Division
District Office No. 1
210 E. Frontview, Suite A
Dodge City, KS 67801



Phone: 620-225-8888
Fax: 620-225-8885
<http://kcc.ks.gov/>

Jay Scott Emler, Chairman
Shari Feist Albrecht, Commissioner
Pat Apple, Commissioner

Sam Brownback, Governor

March 08, 2016

Katherine McClurkan
Merit Energy Company, LLC
13727 Noel Raod, Suite 1200
Dallas, TX 75240

Re: Temporary Abandonment
API 15-055-21839-00-00
Irene 1-1632
SE/4 Sec.32-23S-32W
Finney County, Kansas

Dear Katherine McClurkan:

"Your temporary abandonment (TA) application for the well listed above has been approved. In accordance with K.A.R. 82-3-111 the TA status of this well will expire 03/08/2017.

- * If you return this well to service or plug it, please notify the District Office.
- * If you sell this well you are required to file a Transfer of Operator form, T-1.
- * If the well will remain temporarily abandoned, you must submit a new TA application, CP-111, before 03/08/2017.

You may contact me at the number above if you have questions.

Very truly yours,

Michael Maier"