



**TEMPORARY ABANDONMENT WELL APPLICATION**

All blanks must be complete

OPERATOR: License# \_\_\_\_\_  
 Name: \_\_\_\_\_  
 Address 1: \_\_\_\_\_  
 Address 2: \_\_\_\_\_  
 City: \_\_\_\_\_ State: \_\_\_\_\_ Zip: \_\_\_\_\_ + \_\_\_\_\_  
 Contact Person: \_\_\_\_\_  
 Phone: ( \_\_\_\_\_ ) \_\_\_\_\_  
 Contact Person Email: \_\_\_\_\_  
 Field Contact Person: \_\_\_\_\_  
 Field Contact Person Phone: ( \_\_\_\_\_ ) \_\_\_\_\_

API No. 15- \_\_\_\_\_  
 Spot Description: \_\_\_\_\_  
 \_\_\_\_\_ - \_\_\_\_\_ - \_\_\_\_\_ - \_\_\_\_\_ Sec. \_\_\_\_\_ Twp. \_\_\_\_\_ S. R. \_\_\_\_\_  E  W  
 \_\_\_\_\_ feet from  N /  S Line of Section  
 \_\_\_\_\_ feet from  E /  W Line of Section  
 GPS Location: Lat: \_\_\_\_\_, Long: \_\_\_\_\_  
(e.g. xx.xxxxx) (e.g. -xxx.xxxxx)  
 Datum:  NAD27  NAD83  WGS84  
 County: \_\_\_\_\_ Elevation: \_\_\_\_\_  GL  KB  
 Lease Name: \_\_\_\_\_ Well #: \_\_\_\_\_  
 Well Type: (check one)  Oil  Gas  OG  WSW  Other: \_\_\_\_\_  
 SWD Permit #: \_\_\_\_\_  ENHR Permit #: \_\_\_\_\_  
 Gas Storage Permit #: \_\_\_\_\_  
 Spud Date: \_\_\_\_\_ Date Shut-In: \_\_\_\_\_

|                  | Conductor | Surface | Production | Intermediate | Liner | Tubing |
|------------------|-----------|---------|------------|--------------|-------|--------|
| Size             |           |         |            |              |       |        |
| Setting Depth    |           |         |            |              |       |        |
| Amount of Cement |           |         |            |              |       |        |
| Top of Cement    |           |         |            |              |       |        |
| Bottom of Cement |           |         |            |              |       |        |

Casing Fluid Level from Surface: \_\_\_\_\_ How Determined? \_\_\_\_\_ Date: \_\_\_\_\_  
 Casing Squeeze(s): \_\_\_\_\_ to \_\_\_\_\_ w / \_\_\_\_\_ sacks of cement, \_\_\_\_\_ to \_\_\_\_\_ w / \_\_\_\_\_ sacks of cement. Date: \_\_\_\_\_  
(top) (bottom) (top) (bottom)  
 Do you have a valid Oil & Gas Lease?  Yes  No  
 Depth and Type:  Junk in Hole at \_\_\_\_\_  Tools in Hole at \_\_\_\_\_ Casing Leaks:  Yes  No Depth of casing leak(s): \_\_\_\_\_  
(depth) (depth)  
 Type Completion:  ALT. I  ALT. II Depth of:  DV Tool: \_\_\_\_\_ w / \_\_\_\_\_ sacks of cement  Port Collar: \_\_\_\_\_ w / \_\_\_\_\_ sack of cement  
(depth) (depth)  
 Packer Type: \_\_\_\_\_ Size: \_\_\_\_\_ Inch Set at: \_\_\_\_\_ Feet  
 Total Depth: \_\_\_\_\_ Plug Back Depth: \_\_\_\_\_ Plug Back Method: \_\_\_\_\_

**Geological Data:**

| Formation Name | Formation Top | Formation Base | Completion Information   |
|----------------|---------------|----------------|--|
| 1. _____       | At: _____     | to _____ Feet  | Perforation Interval _____ to _____ Feet or Open Hole Interval _____ to _____ Feet |
| 2. _____       | At: _____     | to _____ Feet  | Perforation Interval _____ to _____ Feet or Open Hole Interval _____ to _____ Feet |

UNDER PENALTY OF PERJURY I HEREBY ATTEST THAT THE INFORMATION CONTAINED HEREIN IS TRUE AND CORRECT TO THE BEST OF MY KNOWLEDGE

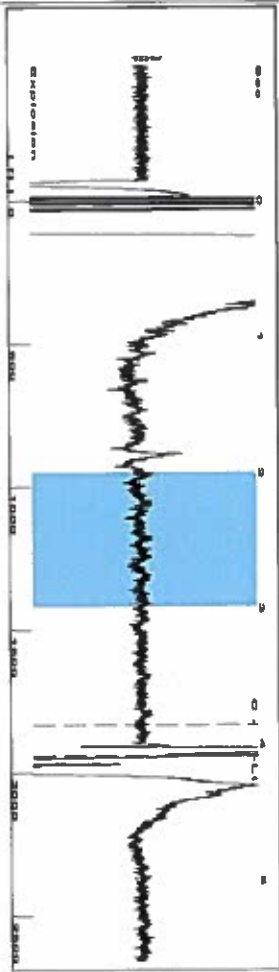
**Submitted Electronically**

|   |  |                |                     |                      |                                 |
|---|--|----------------|---------------------|----------------------|---------------------------------|
| <b>Do NOT Write in This Space - KCC USE ONLY</b>                                      | Date Tested: _____                         | Results: _____ | Date Plugged: _____ | Date Repaired: _____ | Date Put Back in Service: _____ |
|   | Review Completed by: _____ Comments: _____ |                |                     |                      |                                 |
| TA Approved: <input type="checkbox"/> Yes <input type="checkbox"/> Denied Date: _____ |  |                |                     |                      |                                 |

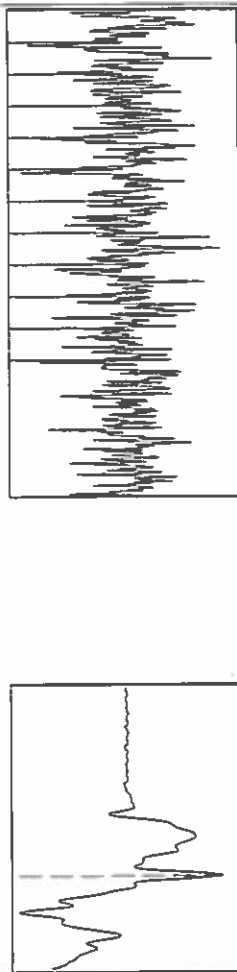
**Mail to the Appropriate KCC Conservation Office:**

|  |   |                    |
|--|---|--------------------|
|  | KCC District Office #1 - 210 E. Frontview, Suite A, Dodge City, KS 67801                      | Phone 620.225.8888 |
|  | KCC District Office #2 / UPGS - 3450 N. Rock Road, Building 600, Suite 601, Wichita, KS 67226 | Phone 316.630.4000 |
|  | KCC District Office #3 - 1500 SW Seventh Steet, Chanute, KS 66720                             | Phone 620.432.2300 |
|  | KCC District Office #4 - 2301 E. 13th Street, Hays, KS 67601-2651                             | Phone 785.625.0550 |

Group: XTO Well: Rooney (acquired on: 02/22/16 15:15:26)



Filter Type High Pass Automatic Collar Count Yes  
 Manual Acoustic Velocity 904 N/s Mannua JTS/sec 15.3139  
 Time 4.083 sec  
 Joints 61.1988 J/s  
 Depth 1940.00 ft



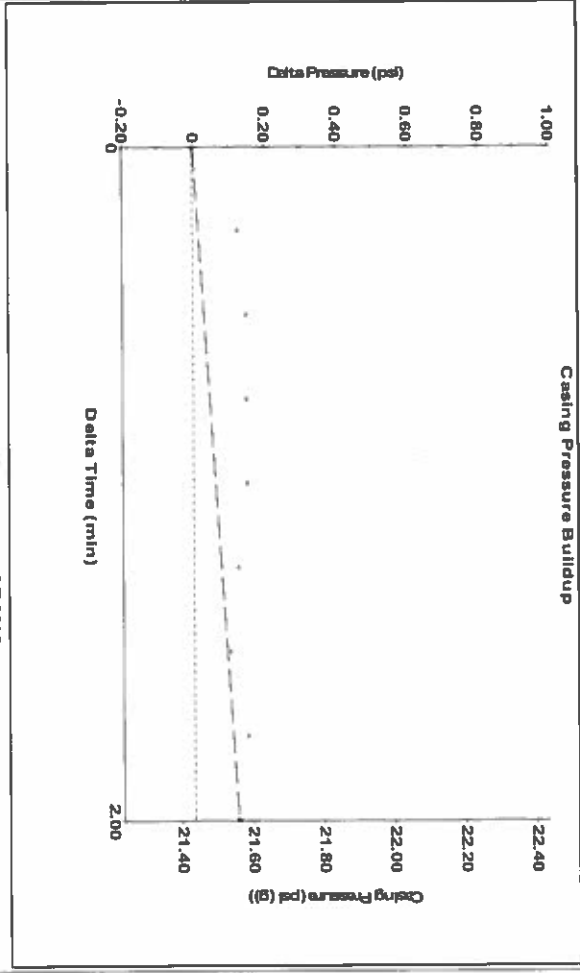
Analysis Method: Automatic

Group: XTO Well: Rooney (acquired on: 02/22/16 15:15:26)

| Production        | Potential                 | Casing Pressure                            | Producing                   |
|-------------------|---------------------------|--|-----------------------------|
| Current           | Oil 0                     | 21.4 psi (g)                               | Annular Gas Flow            |
| Water             | Water - -                 | Casing Pressure Buildup 0.1 psi            | % Liquid 96 %               |
| Gas               | Gas - -                   | 2.00 min                                   | Misc/D 2                    |
| IPR Method        | Vogel                     | Gas/Liquid Interface Pressure 24.0 psi (g) |                             |
| PBHP/SBHP         | Production Efficiency 0.0 | Liquid Level Depth 1940.00 ft              | Pump Intake 351.5 psi (g)   |
|                   |                           | Oil 40 deg API                             | Producing BHP 293.3 psi (g) |
|                   |                           | Water 1.05 Sp.Gr.:H2O                      | Static BHP - - psi (g)      |
|                   |                           | Gas 1.02 Sp.Gr.:AIR                        |                             |
| Acoustic Velocity | 950.283 ft/s              | Pump Intake Depth 2687.00 ft               |                             |
|                   |                           | Formation Depth 2559.00 ft                 |                             |

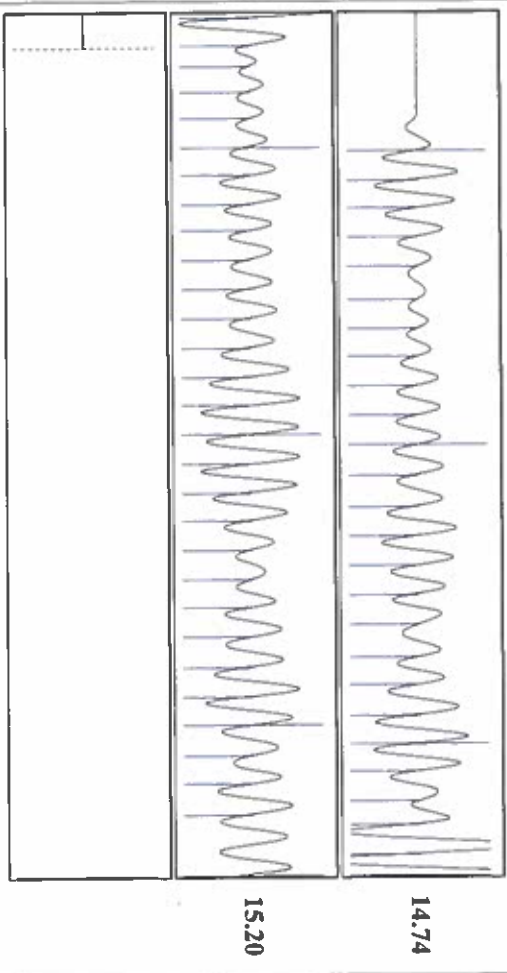


Group: XTO Well: Rooney (acquired on: 02/22/16 15:15:26)



Change in Pressure 0.12 psi  
 Change in Time 2.00 min  
 PT 3319 Range 0 - ? psi

Group: XTO Well: Rooney (acquired on: 02/22/16 15:15:26)



Acoustic Velocity 950.283 ft/s  
 Joints Per Second 14.9887 JTS/sec  
 Depth to liquid level 1940 ft  
 Automatic Collar Count Yes  
 Joints counted 53  
 Joints to liquid level 61.1988  
 Filter Width 13.3139  
 Time to 1st Collar 17.3139 3.856

Conservation Division  
District Office No. 1  
210 E. Frontview, Suite A  
Dodge City, KS 67801



Phone: 620-225-8888  
Fax: 620-225-8885  
<http://kcc.ks.gov/>

Jay Scott Emler, Chairman  
Shari Feist Albrecht, Commissioner  
Pat Apple, Commissioner

Sam Brownback, Governor

March 01, 2016

Shawn Hildreth  
Linn Operating, Inc.  
600 TRAVIS STE 5100  
HOUSTON, TX 77002-3018

Re: Temporary Abandonment  
API 15-093-00233-00-00  
ROONEY 2-20  
NE/4 Sec.20-22S-35W  
Kearny County, Kansas

Dear Shawn Hildreth:

"Your temporary abandonment (TA) application for the well listed above has been approved. In accordance with K.A.R. 82-3-111 the TA status of this well will expire 03/01/2017.

- \* If you return this well to service or plug it, please notify the District Office.
- \* If you sell this well you are required to file a Transfer of Operator form, T-1.
- \* If the well will remain temporarily abandoned, you must submit a new TA application, CP-111, before 03/01/2017.

You may contact me at the number above if you have questions.

Very truly yours,

Michael Maier"