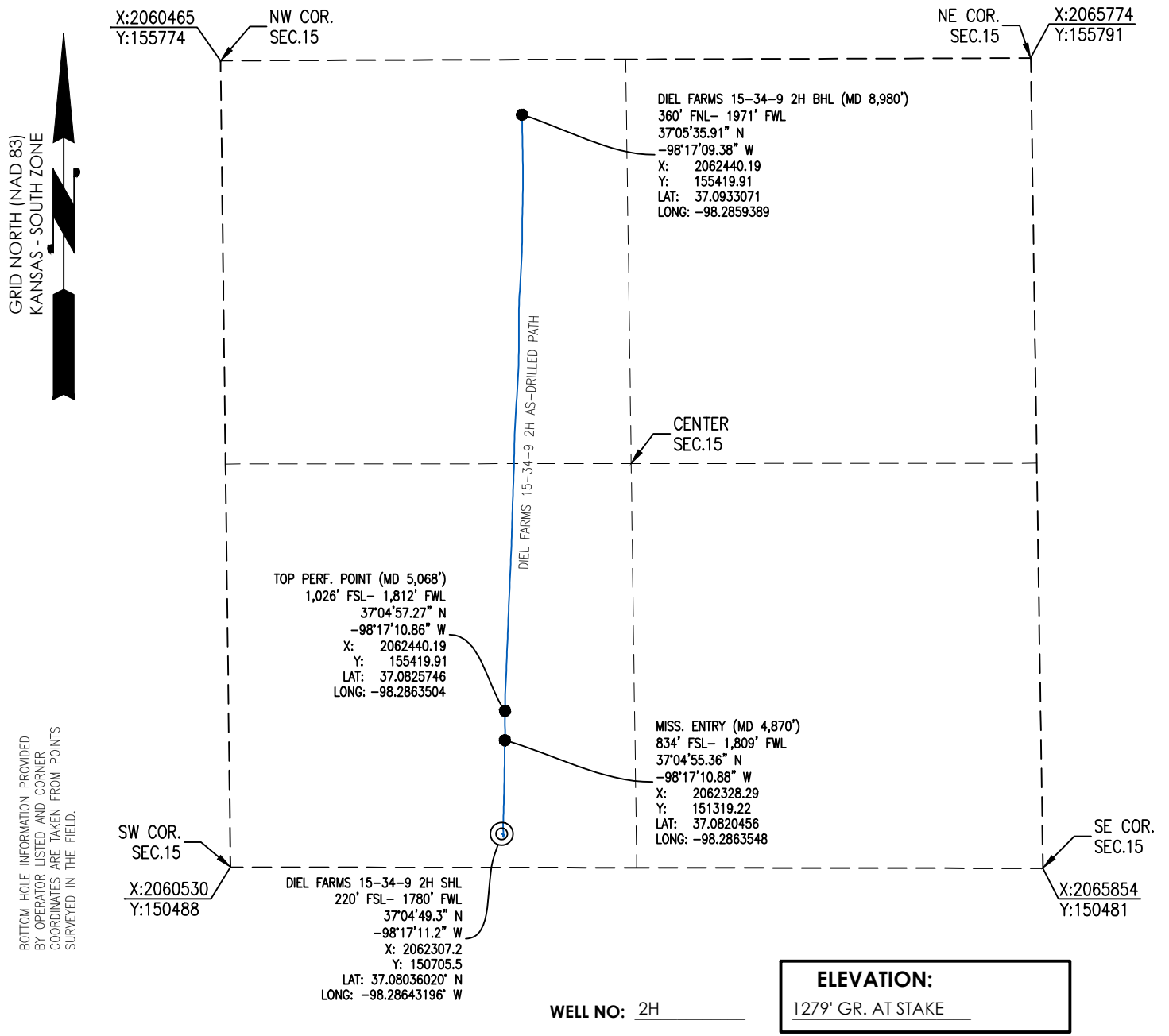




Crafton Tull
 SURVEYING

HARPER COUNTY, KANSAS
 220' FSL- 1780' FWL SECTION 15 TOWNSHIP 34S RANGE 09W 6TH P.M.



OPERATOR: TAPSTONE ENERGY

LEASE NAME: DIEL FARMS 15-34-9

TOPOGRAPHIC & VEGETATION: LOCATION FELL IN A FIELD

BEST ACCESSIBILITY TO LOCATION: SOUTH OR WEST LINE

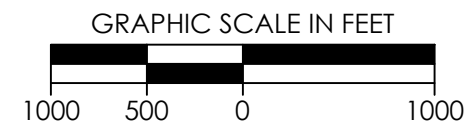
DISTANCE & DIRECTION
FROM HWY JCT OR TOWN: FROM THE JCT. OF KS-58 (SW 140 AVE) & SW 80 RD (±7.0 MILES SOUTHEAST OF HAZELTON, KS), TRAVEL NORTH ON KS-58 (SW 140 AVE) ±3.0 MILES TO SW 50 RD TO THE SOUTHEAST CORNER OF SECTION 15, T34S-R09W.

(THE FOLLOWING INFORMATION WAS GATHERED USING A GPS RECEIVER ACCURACY ±2.3 METERS)

GPS DATUM: NAD-27
LAT: 37.08036020° N
LONG: -98.28643196° W

STATE PLANE COORDINATES:
ZONE: KS-SOUTH NAD-27
X: 2062307.2
Y: 150705.5

GENERAL NOTES:
 THE TIES AND FOOTAGES SHOWN ON THIS PLAT ARE FROM LINES OF OCCUPATION FROM A SURVEY MADE ON THE GROUND AND / OR BEARING AND DISTANCES FROM THE GENERAL LAND OFFICE PLAT OF THE AREA SHOWN AND MAY NOT BE THE ACTUAL PROPERTY CORNERS. THIS PLAT DOES NOT REPRESENT A TRUE BOUNDARY SURVEY. DRILL SITE CONDITION DETERMINATIONS WERE MADE BY TAPSTONE ENERGY REPRESENTATIVES.



REVISION	<p>"DIEL FARMS 15-34-9 2H" PART OF OF SECTION 15, T-34-S, R-09-W AS-DRILLED PLAT HARPER COUNTY, KANSAS</p>		
	SCALE: 1" = 1000'	DRAWN BY: J.PARKER	SHEET NO.: 1 OF 1