



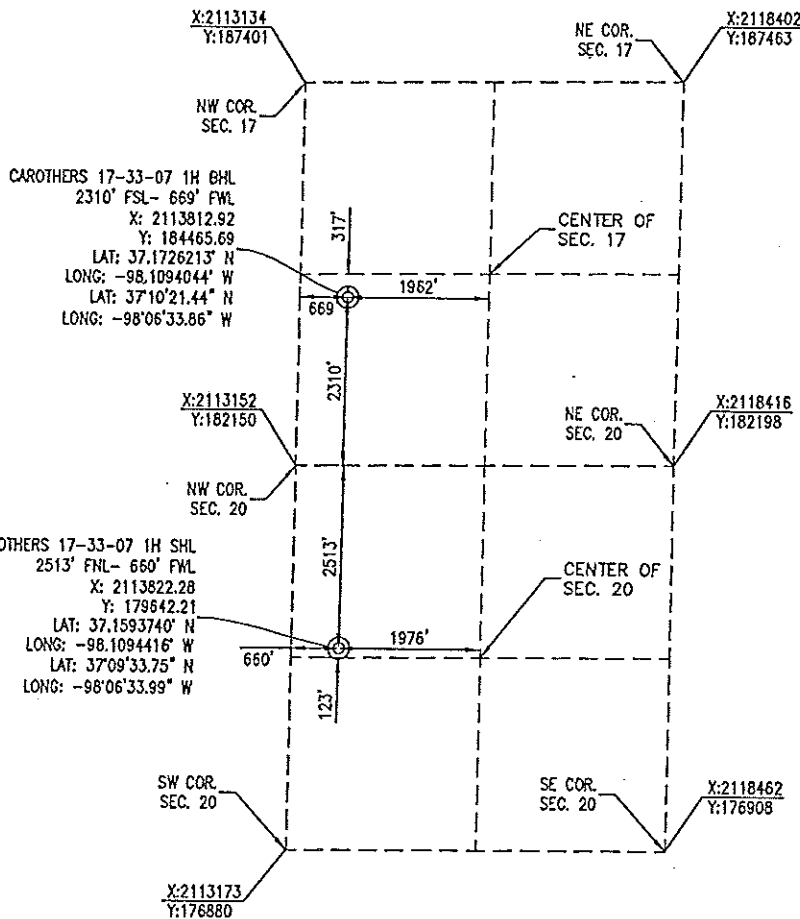
1000 Ledgeclawn Drive
Conway, Arkansas 72034
501.328.3316 | 501.328.3325 F
www.craftontull.com

Crafton Tull
SURVEYING

HARPER COUNTY, KANSAS
2513' FNL- 660' FWL SECTION 20 TOWNSHIP 33S RANGE 07W 6TH P.M.



BOTTOM HOLE INFORMATION PROVIDED
BY OPERATOR LISTED AND CORNER
COORDINATES ARE TAKEN FROM POINTS
SURVEYED IN THE FIELD.



OPERATOR: TAPSTONE ENERGY

WELL NO: 1H

ELEVATION:

1,369' GR. AT STAKE

LEASE NAME: CAROTHERS 17-33-07

TOPOGRAPHIC & VEGETATION: LOCATION FELL IN A FIELD

GOOD DRILL SITE: YES REFERENCE STAKES OR ALTERNATE LOCATION
STAKES SET: NONE

BEST ACCESSIBILITY TO LOCATION: NORTH OR WEST LINE

DISTANCE & DIRECTION

FROM HWY JCT OR TOWN: AT THE JCT. OF STATE HWY. 2 & NW 140 AVE (±4.5 MILES WEST OF ANTHONY, KS). TRAVEL NORTH ±1.0 MILE TO THE NORTHWEST CORNER OF SECTION 20, T33S-R07W.

(THE FOLLOWING
INFORMATION WAS
GATHERED USING A GPS
RECEIVER ACCURACY ±2-3
METERS)

GPS
DATUM: NAD-27
LAT: 37.1593740° N
LONG: -98.1094416° W

STATE PLANE
COORDINATES:
ZONE: KS-SOUTH NAD-27
X: 2113822.28
Y: 179642.21

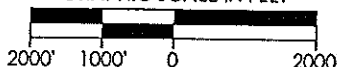
DATE STAKED: 1-22-16

GENERAL NOTES:

THE TIES AND FOOTAGES SHOWN ON THIS PLAT ARE FROM LINES OF OCCUPATION FROM A SURVEY MADE ON THE GROUND AND / OR BEARING AND DISTANCES FROM THE GENERAL LAND OFFICE PLAT OF THE AREA SHOWN AND MAY NOT BE THE ACTUAL PROPERTY CORNERS. THIS PLAT DOES NOT REPRESENT A TRUE BOUNDARY SURVEY. DRILL SITE CONDITION DETERMINATIONS WERE MADE BY TAPSTONE ENERGY REPRESENTATIVES.

COORDINATE VALUES ARE BASED ON NAD27
STATE PLANE COORDINATE SYSTEM, KANSAS
SOUTH ZONE, U.S. SURVEY FOOT.

GRAPHIC SCALE IN FEET



REVISION	tapstone		
	"CAROTHERS 17-33-07 1H" PART OF THE NW 1/4 OF SECTION 20, T-33-S, R-07-W PROPOSED DRILL SITE HARPER COUNTY, KANSAS		
	SCALE: 1" = 2000'	PLOT DATE: 01-26-2016	DRAWN BY: JWB
			SHEET NO.: 1 OF 5

16-31057