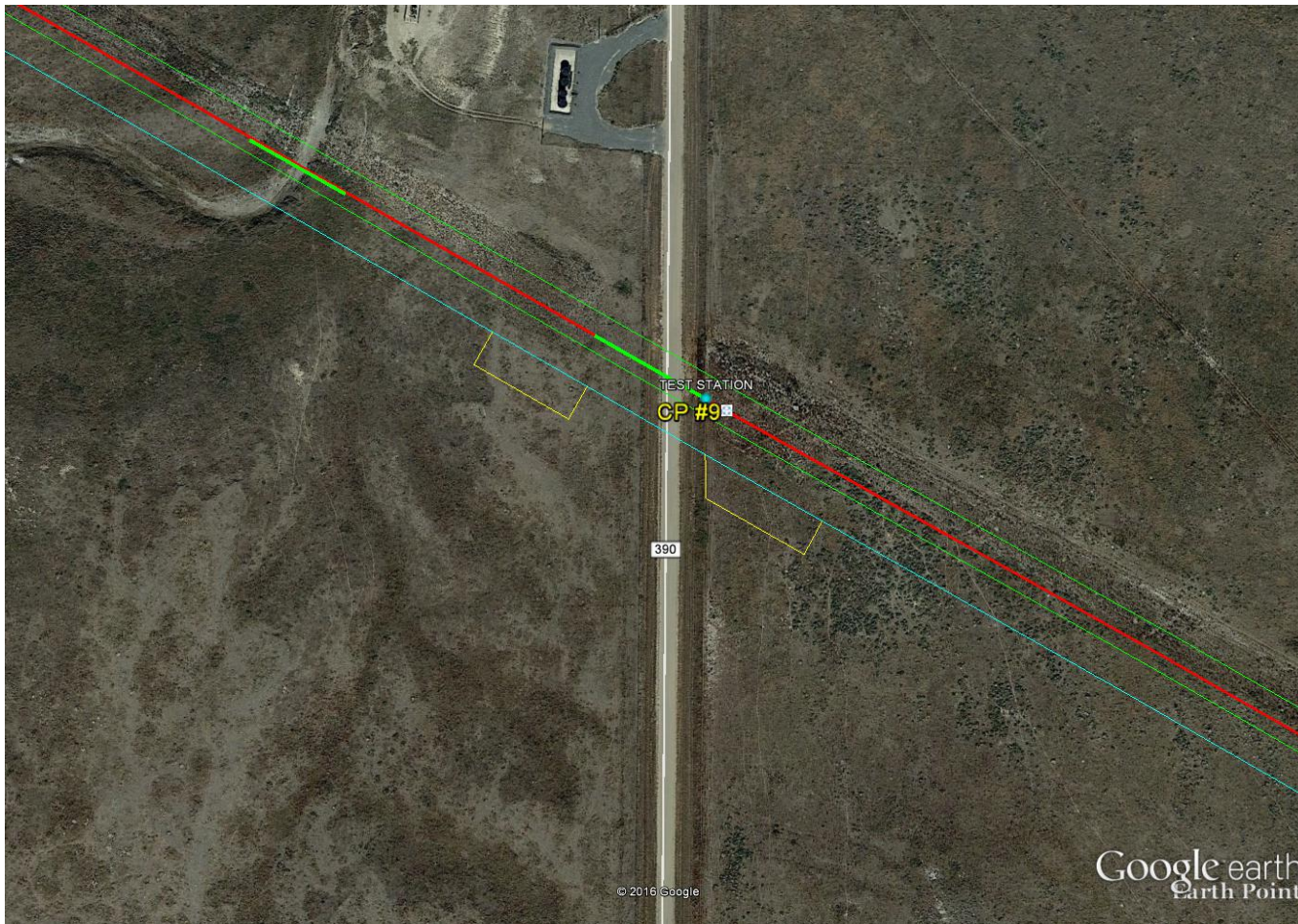




# MAGELLAN<sup>®</sup>

## MIDSTREAM PARTNERS, L.P.

### Cathodic Protection Installation Request



<b>Region:</b> _____	<b>Area:</b> _____	<b>Pipeline:</b> SADDLEHORN 20" CRUDE	
<b>Alignment Sheet:</b> _____	<b>Tract:</b> 6918-8-LO-61	<b>Mile Post:</b> 221.450	<b>Survey Station:</b> 11692+60
<b>State:</b> KANSAS	<b>County:</b> LOGAN	<b>Longitude:</b> -100.9471488	<b>Latitude:</b> 38.7398349
<b>Section:</b> 23	<b>1/4 Sec.of 1/4:</b> NE/14	<b>Township:</b> 15S	<b>Range:</b> 33W
<b>Location:</b> _____			
<b>Property Owner Contact &amp; Information:</b> FARLEIGH RANCH CORPORATION, 516 S. MAIN, SCOTT CITY, KS 67871 620.214.2905			
<b>Power Company Contact and Information:</b> LANE-SCOTT ELECTRIC 620.397.5237			
<b>Groundbed Type:</b> DEEP	<b>Current Required:</b> 50A	<b>Soil Resistance:</b> 10000	
<b>Anode Type:</b> LIDA - MIXED METAL OXIDE	<b>Number of Anodes:</b> 12	<b>Type of Backfill:</b> LORESCO ENVIROCOKE	
<b>Amount of Backfill:</b> 240'	<b>Type of Cable:</b> #6 KYNAR DUAL EXTRUDED HMWPE	<b>Amount of Cable:</b> 450'	
<b>New Rectifier Required: (yes/no):</b> YES	<b>Rectifier Type:</b> UNIVERSAL 40V/60A	<b>Anode Depth:</b> 395	
<b>Anode Spacing:</b> 15'	<b>Anode Hole Specs:</b> 400' X 10"	<b>Design Life:</b> 20 YEARS	
<b>Required Installation Date:</b> _____		<b>Construction Company:</b> _____	
<b>Driving Directions</b>	FROM INTERSECTION OF SR 380 AND SR 390 PROCEED SOUTH FOR 1.17 MILES TO MAGELLAN ROW ON EAST SIDE OF ROAD. BORE HOLE WILL BE DRILLED 50' FROM ROAD ON EAST SIDE ROAD AND 10' FROM PIPELINE ON SOUTH SIDE OF PIPELINE.		
<b>Details:</b>	GROUNDBED WILL BE 50' FROM ROAD AND ON SOUTH SIDE OF PIPELINE. GROUNDBED COMPLETION BELOW GRADE AND TERMINATED AT RECTIFIER POLE ON WEST SIDE OF THE ROAD		
<b>Requested By:</b> TVANGOOR	<b>Date:</b> 08/06/15		
<b>Company No.</b> _____	<b>Operating Unit</b> _____	<b>Cost Center</b> _____	