



DRILL STEM TEST REPORT

Prepared For: **Stelbar Oil Corporation Incorporated**

1625 N Waterfront Parkway
Suite 200
Wichita, KS 67206+6602

ATTN: Dave Goldak

23-1s-21w Ness,KS

Stephens-Higgins #1-23

Start Date: 2016.02.05 @ 18:00:00

End Date: 2016.02.06 @ 00:41:31

Job Ticket #: 61974 DST #: 1

Trilobite Testing, Inc
PO Box 362 Hays, KS 67601
ph: 785-625-4778 fax: 785-625-5620

Printed: 2016.02.09 @ 09:21:02



**TRILOBITE
TESTING, INC**

DRILL STEM TEST REPORT

Stelbar Oil Corporation Incorporated

Stephens-Higgins #1-23

1625 N Waterfront Parkw ay
Suite 200
Wichita, KS 67206+6602
ATTN: Dave Goldak

23-1s-21w Ness,KS

Job Ticket: 61974

DST#: 1

Test Start: 2016.02.05 @ 18:00:00

GENERAL INFORMATION:

Formation: **Mississippi**

Deviated: No Whipstock: ft (KB)

Time Tool Opened: 20:23:31

Time Test Ended: 00:41:31

Test Type: Conventional Bottom Hole (Initial)

Tester: Ken Swinney

Unit No: 58

Interval: 4165.00 ft (KB) To 4182.00 ft (KB) (TVD)

Reference Elevations: 2176.00 ft (KB)

Total Depth: 4182.00 ft (KB) (TVD)

2171.00 ft (CF)

Hole Diameter: 7.88 inches Hole Condition: Fair

KB to GR/CF: 5.00 ft

Serial #: 6838

Inside

Press@RunDepth: 37.57 psig @ 4178.00 ft (KB)

Capacity: 8000.00 psig

Start Date: 2016.02.05

End Date:

2016.02.06

Last Calib.:

2016.02.06

Start Time: 18:00:01

End Time:

00:41:31

Time On Btm:

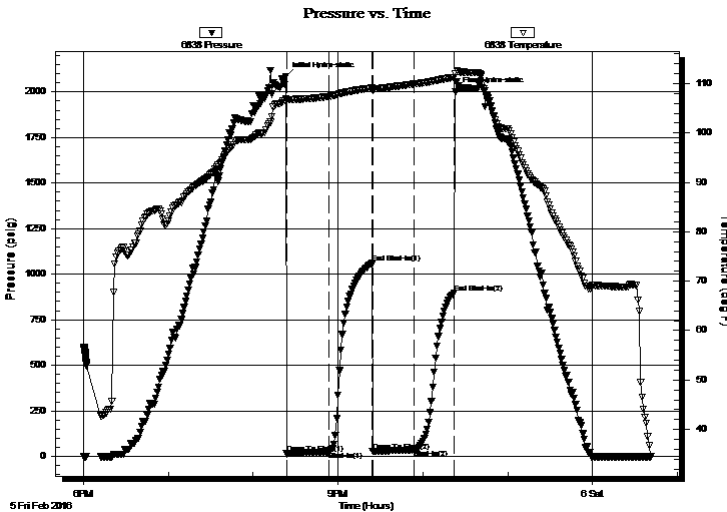
2016.02.05 @ 20:23:01

Time Off Btm:

2016.02.05 @ 22:23:01

TEST COMMENT: IFP Blow built to 1/2" then died to surface blow
ISI No blow back
FFP Surface blow died in 10 minutes
FSI No blow back

PRESSURE SUMMARY



Time (Min.)	Pressure (psig)	Temp (deg F)	Annotation
0	2083.52	106.94	Initial Hydro-static
1	14.96	106.60	Open To Flow (1)
31	25.90	107.42	Shut-In(1)
61	1059.85	109.09	End Shut-In(1)
62	28.92	108.55	Open To Flow (2)
91	37.57	109.89	Shut-In(2)
119	896.92	111.24	End Shut-In(2)
120	2001.50	111.97	Final Hydro-static

Recovery

Length (ft)	Description	Volume (bbl)
45.00	Oil spotted Water cut Mud	0.22
0.00	Water 10% Mud 90%	0.00

Gas Rates

	Choke (inches)	Pressure (psig)	Gas Rate (Mcf/d)



TRILOBITE TESTING, INC

DRILL STEM TEST REPORT

Stelbar Oil Corporation Incorporated

Stephens-Higgins #1-23

1625 N Waterfront Parkwy
Suite 200
Wichita, KS 67206+6602
ATTN: Dave Goldak

23-1s-21w Ness,KS

Job Ticket: 61974

DST#: 1

Test Start: 2016.02.05 @ 18:00:00

GENERAL INFORMATION:

Formation: **Mississippi**

Deviated: No Whipstock: ft (KB)

Time Tool Opened: 20:23:31

Time Test Ended: 00:41:31

Test Type: Conventional Bottom Hole (Initial)

Tester: Ken Swinney

Unit No: 58

Interval: 4165.00 ft (KB) To 4182.00 ft (KB) (TVD)

Reference Elevations: 2176.00 ft (KB)

Total Depth: 4182.00 ft (KB) (TVD)

2171.00 ft (CF)

Hole Diameter: 7.88 inches Hole Condition: Fair

KB to GR/CF: 5.00 ft

Serial #: 8678 Outside

Press@RunDepth: 896.62 psig @ 4179.00 ft (KB)

Capacity: 8000.00 psig

Start Date: 2016.02.05

End Date:

2016.02.06

Last Calib.:

2016.02.06

Start Time: 17:50:01

End Time:

00:41:31

Time On Btm:

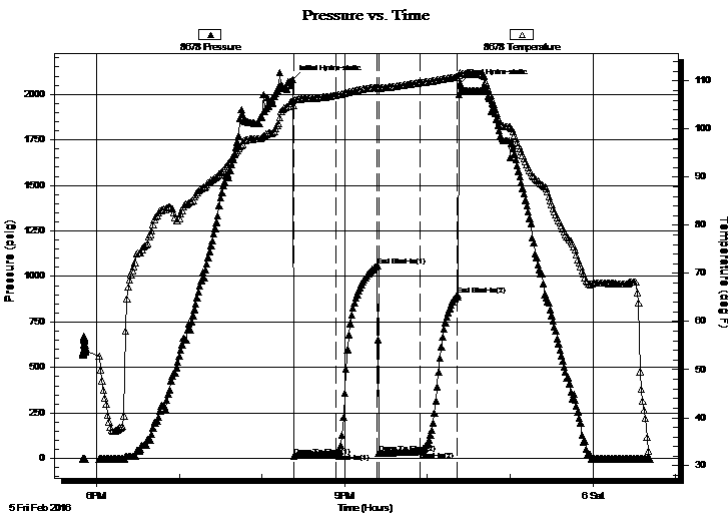
2016.02.05 @ 20:22:01

Time Off Btm:

2016.02.05 @ 22:23:46

TEST COMMENT: IFP Blow built to 1/2" then died to surface blow
ISI No blow back
FFP Surface blow died in 10 minutes
FSI No blow back

PRESSURE SUMMARY



Time (Min.)	Pressure (psig)	Temp (deg F)	Annotation
0	2082.05	105.83	Initial Hydro-static
1	14.74	104.89	Open To Flow (1)
32	26.58	107.02	Shut-In(1)
62	1059.86	108.75	End Shut-In(1)
63	29.66	108.54	Open To Flow (2)
93	38.05	109.63	Shut-In(2)
120	896.62	110.84	End Shut-In(2)
122	2057.21	111.74	Final Hydro-static

Recovery

Length (ft)	Description	Volume (bbl)
45.00	Oil spotted Water cut Mud	0.22
0.00	Water 10% Mud 90%	0.00

Gas Rates

	Choke (inches)	Pressure (psig)	Gas Rate (Mcf/d)



**TRILOBITE
TESTING, INC**

DRILL STEM TEST REPORT

TOOL DIAGRAM

Stelbar Oil Corporation Incorporated

Stephens-Higgins #1-23

1625 N Waterfront Parkway
Suite 200
Wichita, KS 67206+6602
ATTN: Dave Goldak

23-1s-21w Ness,KS

Job Ticket: 61974

DST#: 1

Test Start: 2016.02.05 @ 18:00:00

Tool Information

Drill Pipe:	Length: 4026.00 ft	Diameter: 3.80 inches	Volume: 56.47 bbl	Tool Weight:	2000.00 lb
Heavy Wt. Pipe:	Length: 0.00 ft	Diameter: 0.00 inches	Volume: 0.00 bbl	Weight set on Packer:	20000.00 lb
Drill Collar:	Length: 122.56 ft	Diameter: 2.25 inches	Volume: 0.60 bbl	Weight to Pull Loose:	50000.00 lb
			<u>Total Volume: 57.07 bbl</u>	Tool Chased	0.00 ft
Drill Pipe Above KB:	10.56 ft			String Weight: Initial	45000.00 lb
Depth to Top Packer:	4165.00 ft			Final	45000.00 lb
Depth to Bottom Packer:	ft				
Interval between Packers:	17.00 ft				
Tool Length:	44.00 ft				
Number of Packers:	2	Diameter: 6.75 inches			
Tool Comments:					

Tool Description

Tool Description	Length (ft)	Serial No.	Position	Depth (ft)	Accum. Lengths
Shut-In Tool	5.00			4143.00	
Hydraulic tool	5.00			4148.00	
Jars	5.00			4153.00	
Safety Joint	2.00			4155.00	
Packer - Shale	5.00			4160.00	
Packer	5.00			4165.00	27.00 Bottom Of Top Packer
Anchor	12.00			4177.00	
Recorder	1.00	6838	Inside	4178.00	
Recorder	1.00	8678	Outside	4179.00	
Bullnose	3.00			4182.00	17.00 Anchor Tool
Total Tool Length:	44.00				



**TRILOBITE
TESTING, INC**

DRILL STEM TEST REPORT

FLUID SUMMARY

Stelbar Oil Corporation Incorporated

Stephens-Higgins #1-23

1625 N Waterfront Parkway
Suite 200
Wichita, KS 67206+6602
ATTN: Dave Goldak

23-1s-21w Ness,KS

Job Ticket: 61974

DST#: 1

Test Start: 2016.02.05 @ 18:00:00

Mud and Cushion Information

Mud Type: Gel Chem

Mud Weight: 9.00 lb/gal

Viscosity: 51.00 sec/qt

Water Loss: 7.98 in³

Resistivity: ohm.m

Salinity: 8300.00 ppm

Filter Cake: inches

Cushion Type:

Cushion Length: ft

Cushion Volume: bbl

Gas Cushion Type:

Gas Cushion Pressure: psig

Oil API: 44 deg API

Water Salinity: 23000 ppm

Recovery Information

Recovery Table

Length ft	Description	Volume bbl
45.00	Oil spotted Water cut Mud	0.221
0.00	Water 10% Mud 90%	0.000

Total Length: 45.00 ft Total Volume: 0.221 bbl

Num Fluid Samples: 0

Num Gas Bombs: 0

Serial #:

Laboratory Name:

Laboratory Location:

Recovery Comments: Sample Chamber

1500 ml Water cut Mud

1000 ml Clean oil

Serial #: 6838

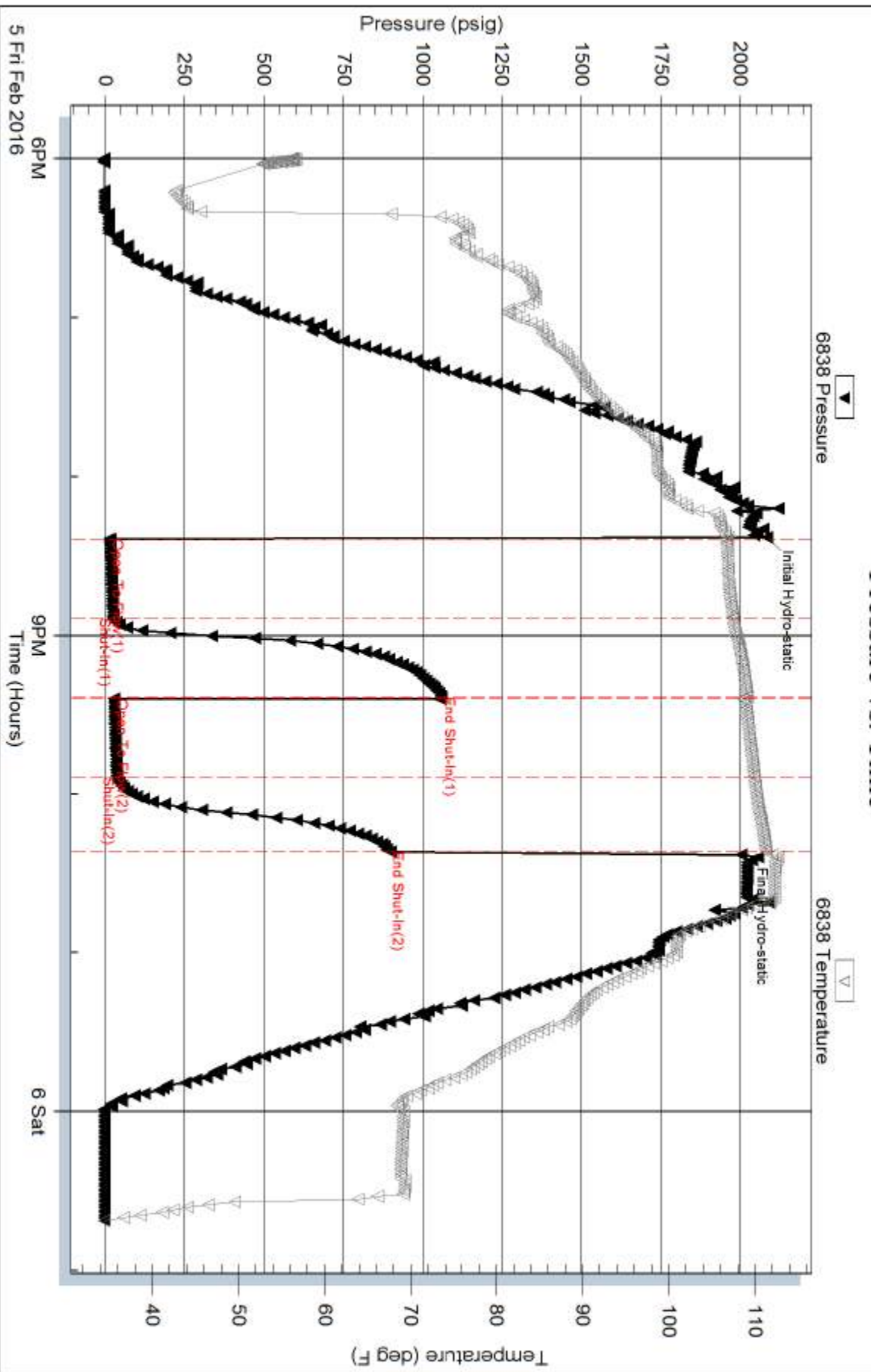
Inside

Stelbar Oil Corporation Incorporated

23-1s-21w Ness, KS

DST Test Number: 1

Pressure vs. Time



Trilobite Testing, Inc

Ref. No: 61974

Printed: 2016.02.09 @ 09:21:04

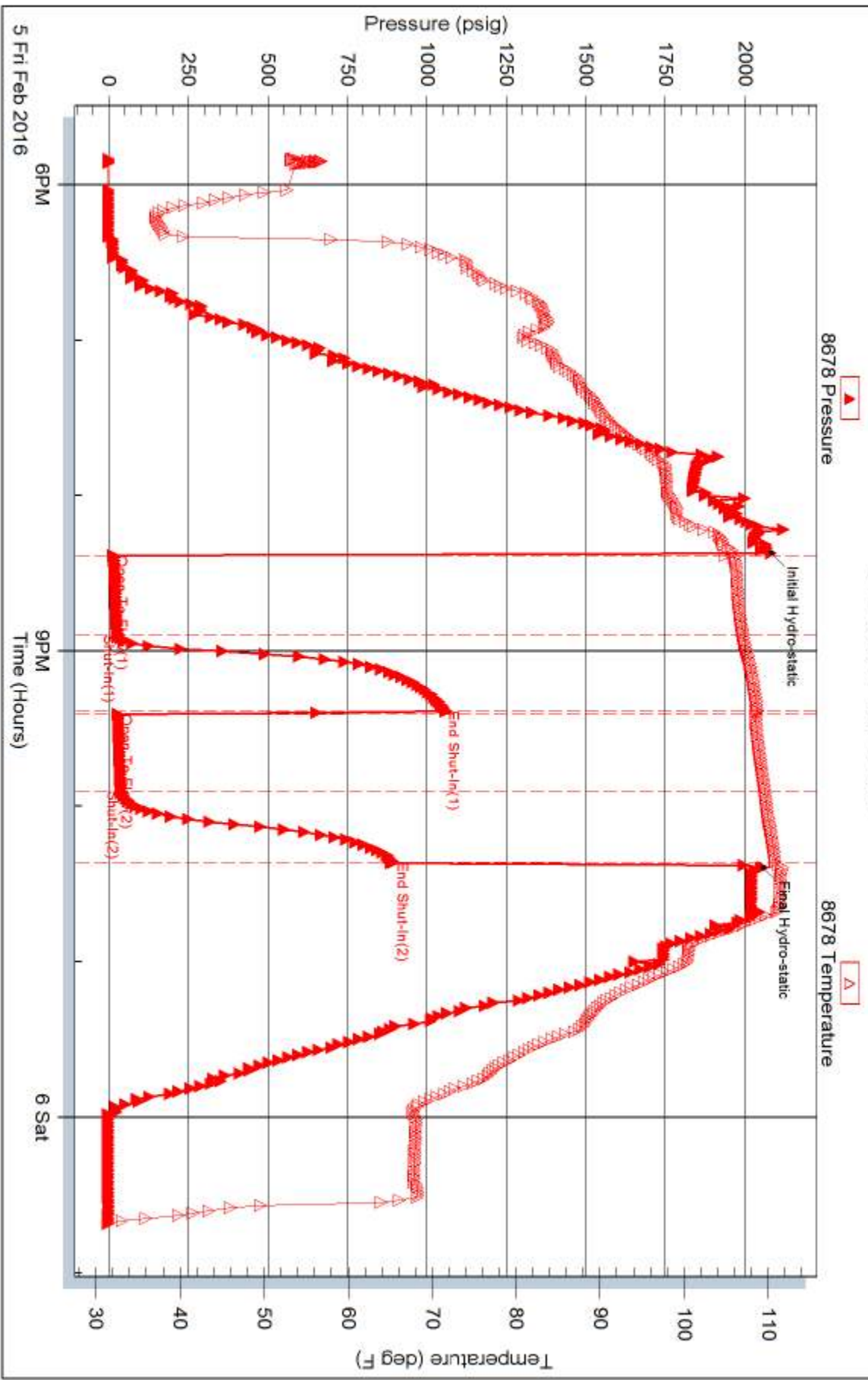
Serial #: 8678

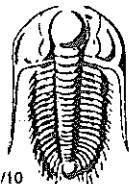
Outside Stellar Oil Corporation Incorporated

23-1s-21w Ness, KS

DST Test Number: 1

Pressure vs. Time





TRILOBITE TESTING INC.

1515 Commerce Parkway • Hays, Kansas 67601

Test Ticket

NO. 61974

Well Name & No. Stephens-Higgins Unit 1-23 Test No. 1 Date 5 Feb 16
 Company Stellar Oil Corporation Incorporated Elevation 2176 KB 2171 GL
 Address 1625 N Waterfront Parkway Suite 200 Wichita, Kansas 67206-4602
 Co. Rep / Geo. Dave Galdak Rig Murphy Rig 16
 Location: Sec. 23 Twp. 17S Rge. 2W Co. Ness State KS

Interval Tested 4165-4182 Zone Tested Mississippi
 Anchor Length 17 Drill Pipe Run 4026 Mud Wt. 9.2
 Top Packer Depth 4160 Drill Collars Run 122.56 Vis 51
 Bottom Packer Depth 4145 Wt. Pipe Run — WL 8.0
 Total Depth 4182 Chlorides 8300 ppm System LCM 1#

Blow Description Initial Blow - Blow held in 1/2 inch then did to surface
Initial shut in no blow back
Final Blow - Surface blow that did in 10 minutes
Final shut in no blow back

Rec	Feet of	%gas	%oil	%water	%mud
Rec <u>45</u>	Feet of <u>Water cut with total mud</u>	%gas	%oil	<u>10</u> %water	<u>90</u> %mud
Rec	Feet of	%gas	%oil	%water	%mud
Rec	Feet of	%gas	%oil	%water	%mud
Rec	Feet of	%gas	%oil	%water	%mud

Rec Total 45 BHT 112 deg Gravity 44 API RW .5 @ 70 °F Chlorides 23000 ppm

(A) Initial Hydrostatic 2083 Test 1150 T-On Location 5:27 pm
 (B) First Initial Flow 14 Jars 250 T-Started 6:00 pm
 (C) First Final Flow 25 Safety Joint 75 T-Open 6:23 pm
 (D) Initial Shut-In 1059 Circ Sub _____ T-Pulled 10:23 pm
 (E) Second Initial Flow 28 Hourly Standby _____ T-Out 12:11 am
 (F) Second Final Flow 37 Mileage 84 84
 (G) Final Shut-In 396 Sampler 250
 (H) Final Hydrostatic 2001 Straddle _____
 Shale Packer 250 Ruined Shale Packer _____
 Extra Packer _____ Ruined Packer _____
 Extra Recorder _____
 Day Standby _____
 Accessibility _____
 Sub Total 2059

Approved By [Signature] Our Representative [Signature]

Trilobite Testing Inc. shall not be liable for damaged of any kind of the property or personnel of the one for whom a test is made, or for any loss suffered or sustained, directly or indirectly, through the use of its equipment, or its statements or opinion concerning the results of any test, tools lost or damaged in the hole shall be paid for at cost by the party for whom the test is made.