



MUD LOG

WellSight Systems

Scale 1:240 (5"=100') Imperial
Measured Depth Log

Well Name: Patterson #4-8
 Well Id: 15-093-21942
 Location: SW NE NE SE Sec.8 T23S 37W
 License Number: 34318
 Spud Date: 1/2/16
 Surface Coordinates: Latitude 38.0662014
 Longitude -101.3965807
 Bottom Hole Coordinates: Latitude 38.0662014
 Longitude -101.3965807
 Ground Elevation (ft): 3298
 Logged Interval (ft): 4500 To: 4950
 Formation: Morrow Sd.
 Type of Drilling Fluid: Mud

Region:
 Drilling Completed: 1/10/16
 K.B. Elevation (ft): 3310
 Total Depth (ft): 4950

Printed by MUD.LOG from WellSight Systems 1-800-447-1534 www.WellSight.com

OPERATOR

Company: Berexco LLC
 Address: 2020 N. Bramblewood
 Wichita, KS 67206

GEOLOGIST

Name: Clint Bleier
 Company: Berexco LLC
 Address: 2020 N. Bramblewood
 Wichita, KS 67206

Cores

No Cores

DSTs

No Tests

Comments

ROCK TYPES

Anhy	Clyst	Gyp	Mrlst	Shgy
Bent	Coal	Igne	Salt	Sltst
Brec	Congl	Lmst	Shale	Ss
Cht	Dol	Meta	Shcol	Till

ACCESSORIES

MINERAL	Gyp	FOSSIL	Ostra	Sltstrg
Anhy	Hvymin	Algae	Pelec	Ssstrg
Arggrn	Kaol	Amph	Pellet	TEXTURE
Arg	Marl	Belm	Pisolite	Boundst
Bent	Minxl	Bioclst	Plant	Chalky
Bit	Nodule	Brach	Strom	Cryxln
Brecfrag	Phos	Bryozoa	STRINGER	Earthy
Calc	Pyr	Cephal	Anhy	Finexln
Carb	Salt	Coral	Arg	Grainst
Chtdk	Sandy	Crin	Bent	Lithogr
Chtlt	Silt	Echin	Coal	Microxln
Dol	Sil	Fish	Dol	Mudst
Feldspar	Sulphur	Foram	Gyp	Packst
Ferrpel	Tuff	Fossil	Ls	Wackest
Ferr		Gastro	Mrst	
Glau		Oolite		

OTHER SYMBOLS

Ferrspar
 Ferrpel
 Ferr
 Glau

Sulphur
 Tuff

Foram
 Fossil
 Gastro
 Oolite

Dol
 Gyp
 Ls
 Mrst

Mudst
 Packst
 Wackest

OTHER SYMBOLS

POROSITY

Earthy
 Fenest
 Fracture
 Inter
 Moldic
 Organic
 Pinpoint

Vuggy

SORTING

Well
 Moderate
 Poor

ROUNDING

Rounded
 Subrnd
 Subang
 Angular

OIL SHOW

Even

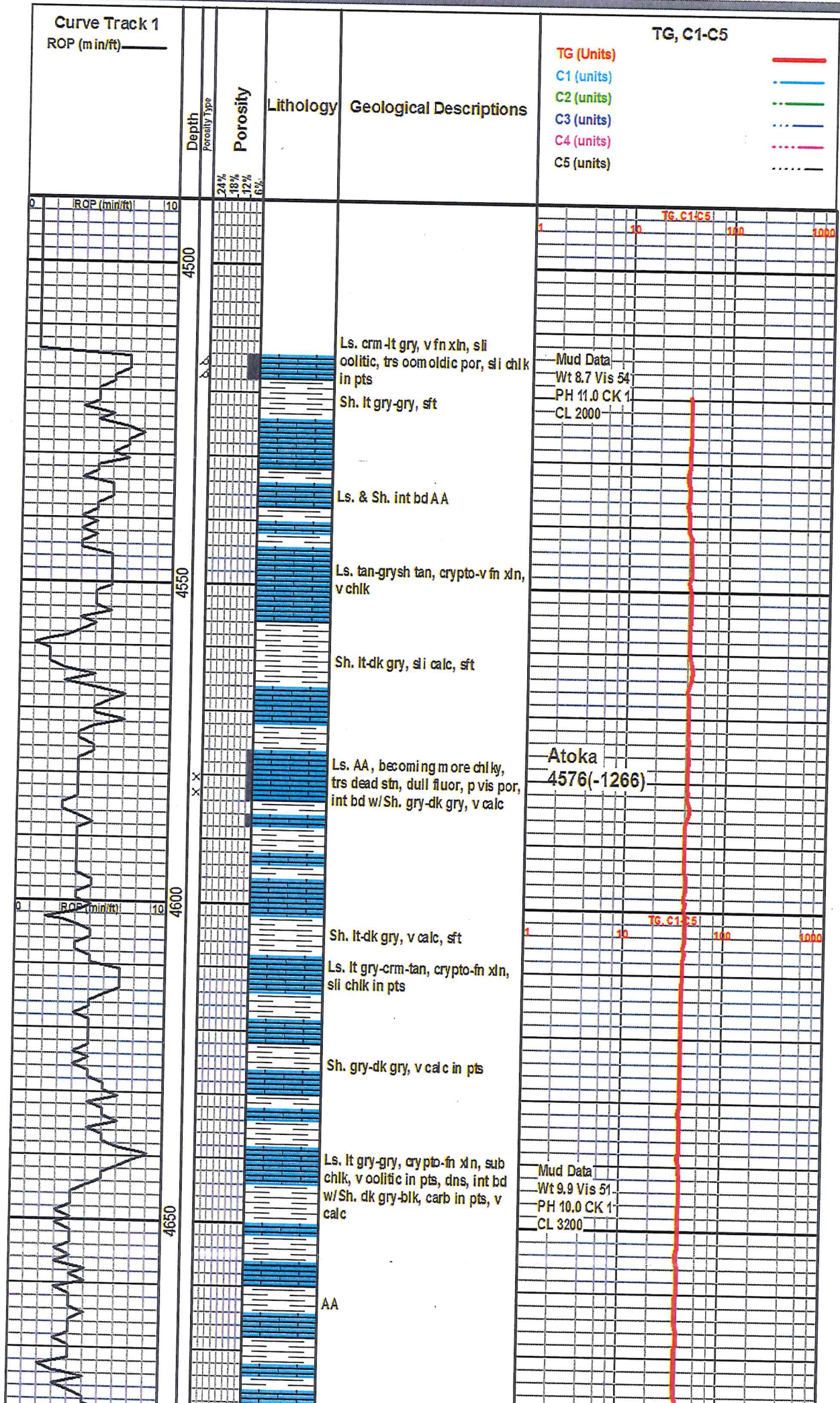
Spotted
 Ques
 Dead

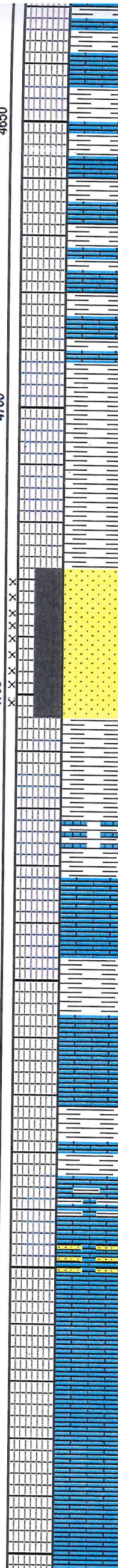
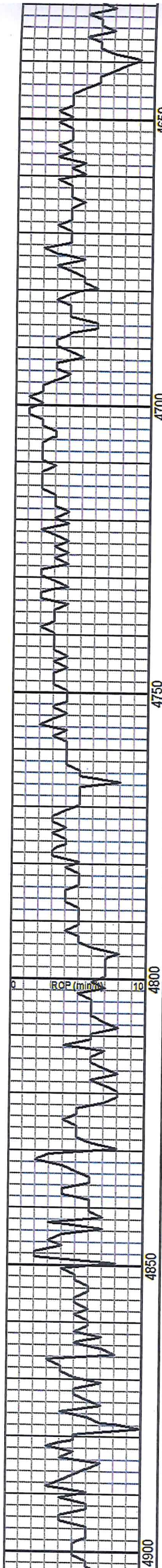
INTERVAL

Core
 Dst

EVENT

Rft
 Sidewall





Ls. lt gry-gry, crypto-fn xln, sub chlk, v oolitic in pts, dns, int bd w/Sh. dk gry-blk, carb in pts, v calc

AA

AA

Sh. dk gry-blk-carb, sft, v calc in pts, trs pyrite

SS. qtz, v fn-med gm, clr-tan-brn, sub rnd-sub ang, few clusters w/fr-gd por, v sli odor, dull yellow fluor, fr oil stn, many fn-crs grms in bottom of tray, clr, p sorted, rnd-sub md

Sh. gry-dk gry, sli silty, sft, trs pyrite

Sh. AA, w/Ls. tan-lt gry, crypto-fn xln, oolitic, trs foss

Ls. tan-lt gry, crypto-fn xln, sub sucro, v oolitic in pts, dns

Sh. gry-dk gry, mostly firm, sft in pts

Ls. crm-tan, fn-m xln, dns, v glauc in pts

Sh. grn-dk gry-blk, mostly sft but firm in pts. Ls. tan-gry, fn-m xln, v glauc, foss in pts.

Ls. crm, fn xln, v chlky, v oolitic, sli shly, grn-blk, firm friable in pts.

Ls. wht-crm, m xln, v oolitic, sli chlk, no vis por, loose qtz grms, clr, fn-m gm, sub-rnd to rnd, ns

Ls. crm-greenish gry, oolitic throughout, p vis por, sli chlk, dns

Ls. wht-crm, sm lt tan, crypto-v fn xln, oolitic in pts, no vis por

Ls. tan, crypto-fn xln, v oolitic, v

