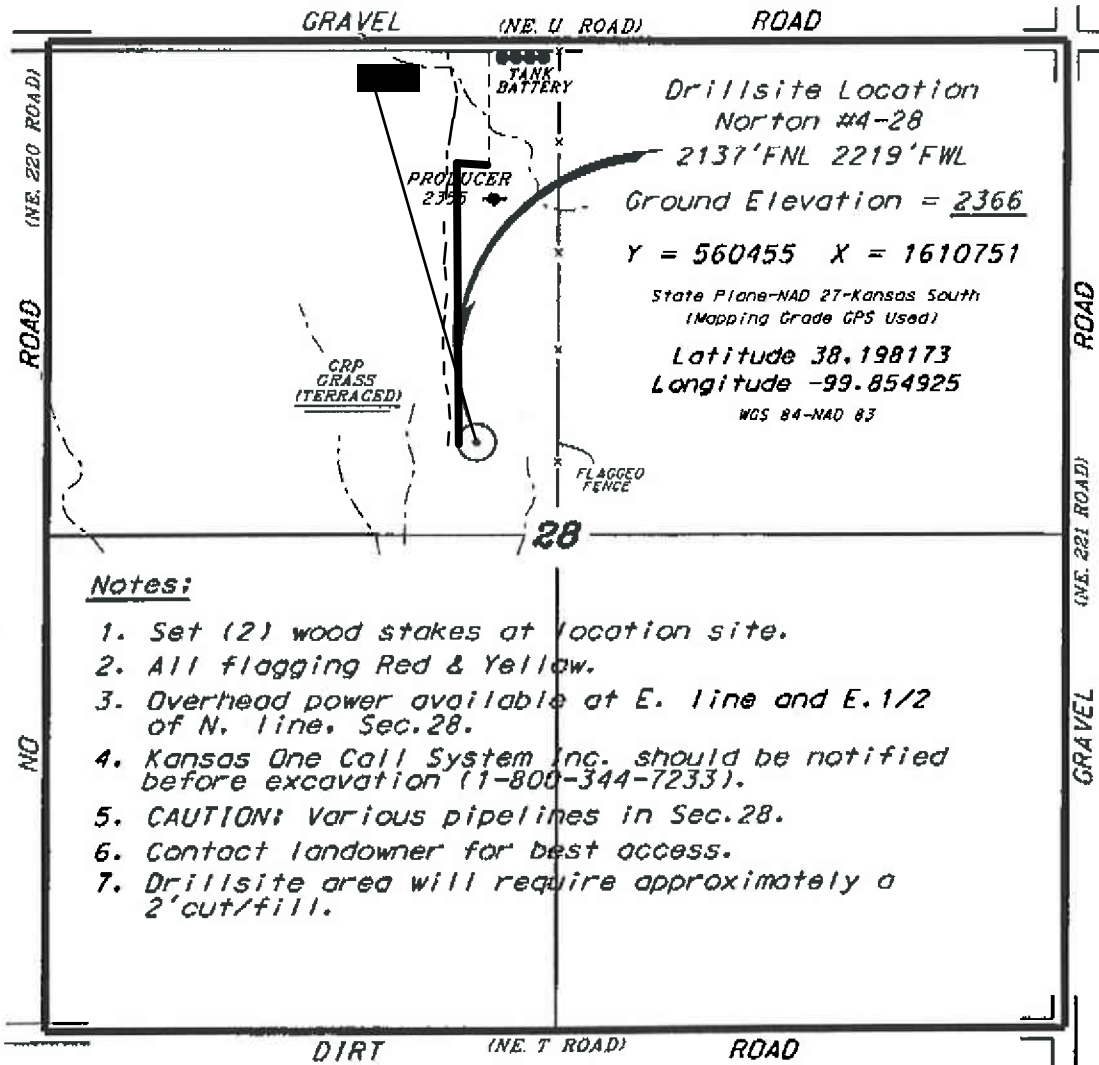


**L.D. DRILLING, INC.**  
**NORTON LEASE**  
**NW. 1/4, SECTION 28, T21S, R23W**  
**HODGEMAN COUNTY, KANSAS**

**Directions:**

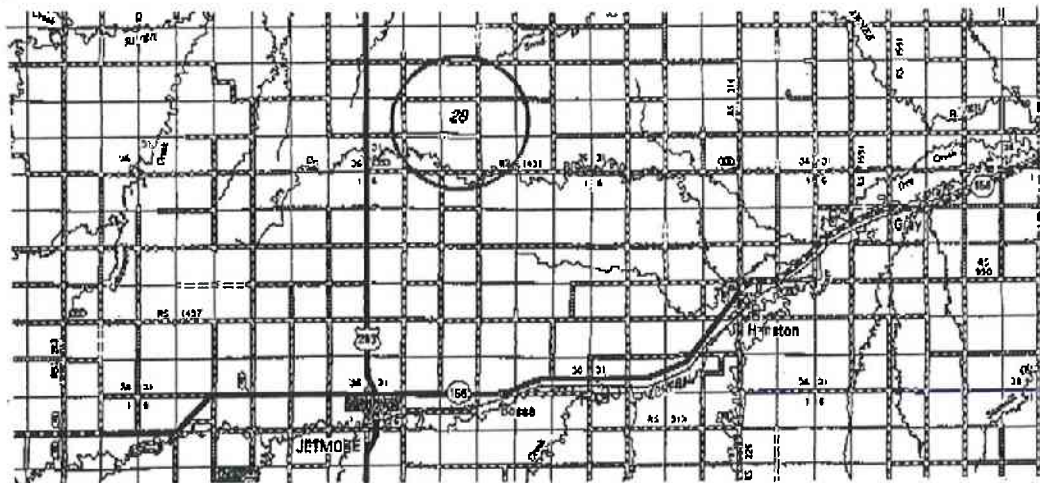
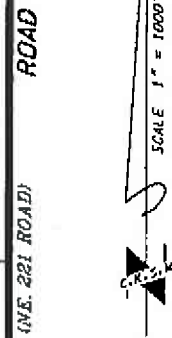
From the intersection of Highway 283 and Highway 156 (in Jetmore, Kansas) go 9.0 miles North on Highway 283, then go 1.0 miles East, then go 1.0 miles South, then go 1.0 miles East to the NW. corner of Section 28, then go 0.42 miles East, then go 0.40 miles South to location.



**Notes:**

1. Set (2) wood stakes at location site.
2. All flagging Red & Yellow.
3. Overhead power available at E. line and E. 1/2 of N. line, Sec. 28.
4. Kansas One Call System Inc. should be notified before excavation (1-800-344-7233).
5. CAUTION: Various pipelines in Sec. 28.
6. Contact landowner for best access.
7. Drillsite area will require approximately a 2' cut/fill.

\*Ingress and egress to location as shown on this plot is for usage only and may not be legally opened for public use. Contact landowner, tenant and county road department for access.



• Controlling data is based upon the best maps and photographs available to us and upon a regular Section of land containing 640 acres.  
 • Appropriate section lines were determined using the normal standard of care of oilfield surveyors practicing in the state of Kansas. The section corners, when established the precise section lines, were not necessarily located, and the exact location of the drillsite location in the section is not guaranteed. Therefore, the operator securing this service and accepting this plan and all other parties relying thereon agree to hold Central Kansas Oilfield Services, Inc., its officers and employees harmless from all losses, costs and expenses and said entities released from any liability from incidental or consequential damages.  
 • Elevations derived from National Geodetic Vertical Datum.

Date February 18, 2016