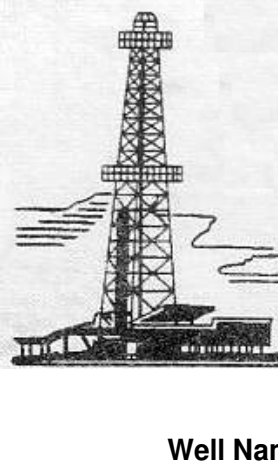


WELLSITE GEOLOGIST'S REPORT

VERNON C. SCHRAG
CONSULTANT GEOLOGIST



Scale 1:240 (5"=100') Imperial

Well Name: RAY #1-8
 Location: SE NW SW SE SEC. 8-18S-28W
 Licence Number: API: 15-101-22574
 Spud Date: November 12, 2015
 Surface Coordinates: 753' FSL & 2001' FEL

Region: Lane Co., KS
 Drilling Completed: November 22, 2015

Bottom Hole Coordinates:
 Ground Elevation (ft): 2752' K.B. Elevation (ft): 2761'
 Logged Interval (ft): 3800' To: RTD Total Depth (ft): 4625'
 Formation: Mississippi
 Type of Drilling Fluid: Chemical Premix (Displaced)

Printed by MUD.LOG from WellSight Systems 1-800-447-1534 www.WellSight.com

OPERATOR:

Company: Larson Engineering Inc.
 Address: 562 West State Road 4
 Olinitz, KS 67564-8561

DRILLING CONTRACTOR:

H. D. Drilling, LLC, Rig #3 (Co. Tools)

DP 4.5" XH (16.6#); DC 6-1/4" x 2-3/8" x 558', Kelly 41.00', Tool Joint 5.5" ; Bit: JZ-HA20Q, 7-7/8", standard jets 15-15-15; rpm 80, WOB 35k; Kelly Bushing 9' above ground level; LeWayne "Lew" Tresner (tool pusher).

CASING:

Ran 6 jts new Midwestern Pipeworks 8-5/8" 20# R3 STC 8rd csg. Talled 253.60', set @ 265.10' KB.
 Install 4-1/2" production casing @ 4625'.

CIRCULATION SYSTEM:

Continental EMSCO D-300, duplex, 6 x 14, 60-62 spm, Chemical, premix, earth pits, displaced 3515', Mud-Co./Service Mud, Inc., Jason Whiting.

OPEN HOLE LOGS:

DN, DI (SP), ML, No Sonic; 5" detail LTD-3600; 2" DI to surface casing; Weatherford Open Hole Services, Liberal, KS, Adam Sill, LTD 4624, RTD 4625.

DRILL STEM TEST #1:

LKC "J": Interval: 4186-4206 (20'); Blow: weak incr 1" IFP, no RB, weak incr 3" FFP, no RB; Times: 5-15-30-60; Recovery: 131' TF; Grindouts: 7' oil spotted mud, 124' muddy water (50%M, 50%W, chlorides 28k); Pressures: HP: 2024-2073, SIP: 958-968, FP: 23-39, 41-80; BHT: 120 deg F; Trilobite Testing, Inc., Scott City, KS, Mike Roberts.

DRILL STEM TEST #2:

LKC "K": Interval: 4222-4242 (20'); Blow: weak surf IFP, no RB, no blow 2nd Open; Times: 5-15-15-30; Recovery: 2' mud w/oil spots; Pressures: HP: 2047-2022, SIP: 88-344, FP: 32-26, 27-28; BHT: 121 deg F; Trilobite Testing, Inc., Scott City, KS, Mike Roberts.

DRILL STEM TEST #3:

LKC "L": Interval: 4260-4270 (10'); Blow: BOB 3 min IFP, 6" RB, BOB 1 min FFP, 4" RB; Times: 5-15-15-30; Recovery: 806' GIP, 811' TF; Grindouts: 439' GCO (20%G, 80%O, 31 grav.), 248' GCMO (10%G, 75%O, 15%M), 62' OCGM (20%G, 10%O, 70%M), 62' OCM (20%O, 80%M); Pressures: HP: 2083-2011, SIP: 904-843, FP: 122-175, 207-362; BHT: 113 deg. F; Trilobite Testing, Inc., Scott City, KS, Mike Roberts.

DRILL STEM TEST #4:

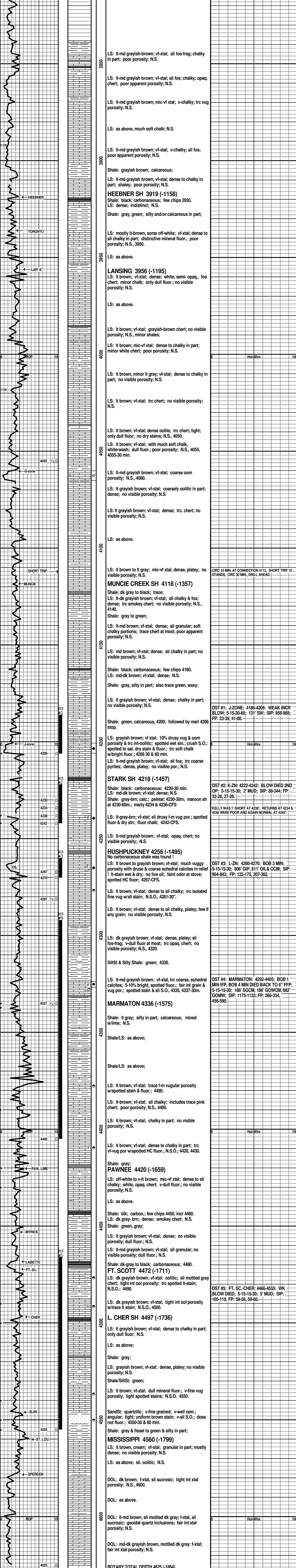
Marmaton: Interval: 4292-4405 (113'); Blow: BOB 1 min IFP, no RB, BOB 4 min died down to 6" FFP, no RB; Times: 5-15-15-30; Recovery: 1054' TF; Grindouts: 186' SGCM (2%G, 98%M), 186' GWOCM (3%G, 22%O, 5%W, 70%M), 558' GOMCW (3%G, 17%O, 50%W, 30%M), 124' WM (15%W, 82%M); Pressures: HP: 2205-2134, SIP: 1175-1132, FP: 266-334, 456-590; Trilobite Testing, Inc., Scott City, KS, Mike Roberts.

DRILL STEM TEST #5:

Ft. Scott thru Cherokee Lime: Interval: 4466-4555 (89'); Blow: weak surf. IFP, no RB, blow died second open; Times: 5-15-15-30; Recovery: 5' mud, no show; Pressures: HP: 2242-2221; SIP: 105-119, FP: 59-58, 59-60; BHT: 117; Trilobite Testing, Inc., Scott City, KS, Mike Roberts.

REMARKS:

It was determined that production casing should be run for further testing.



WEATHERFORD LTD 4624