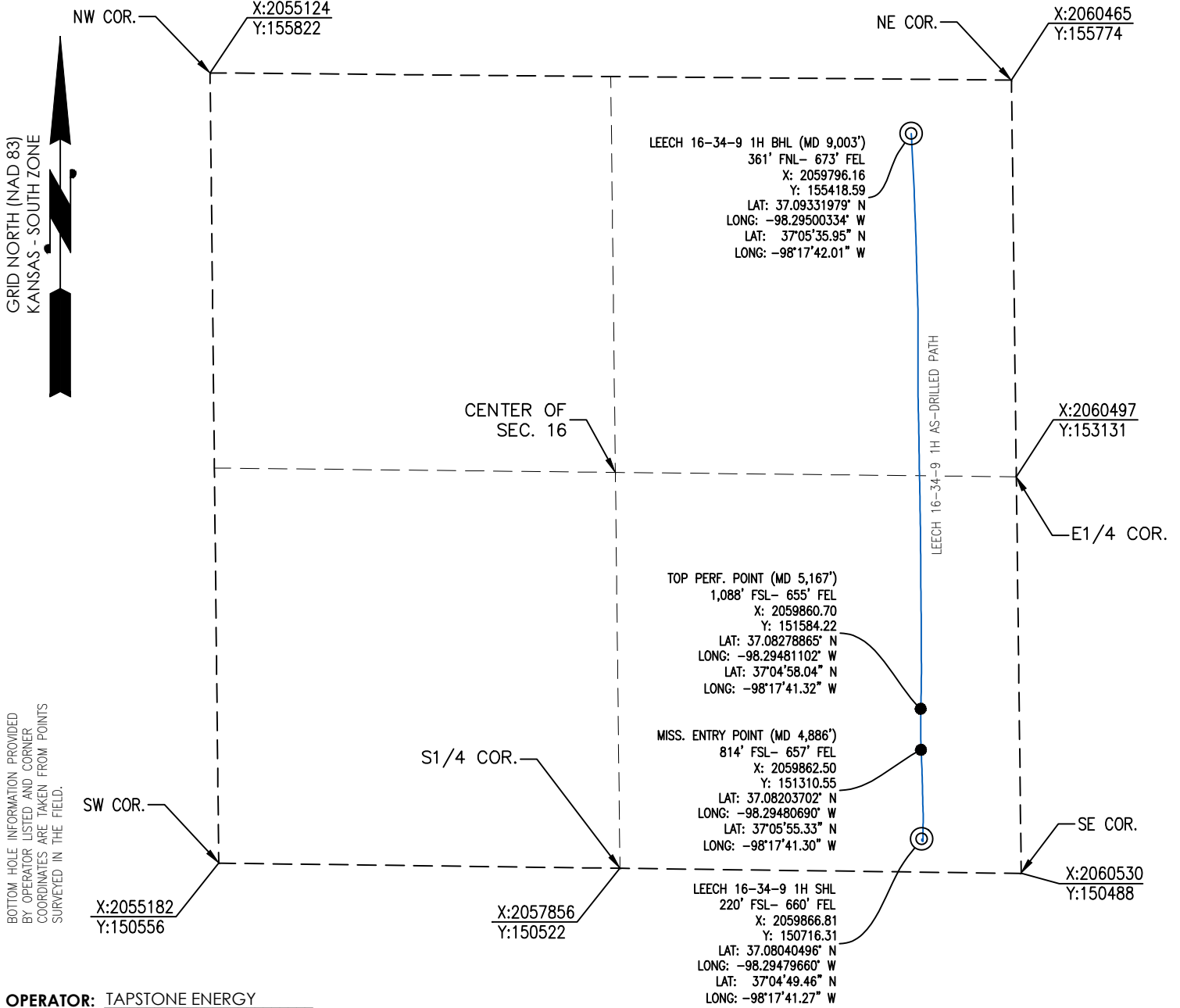




Crafton Tull
 SURVEYING

HARPER COUNTY, KANSAS
 220' FSL- 660' FEL SECTION 16 TOWNSHIP 34S RANGE 09W 6TH P.M.



BOTTOM HOLE INFORMATION PROVIDED BY OPERATOR LISTED AND CORNER COORDINATES ARE TAKEN FROM POINTS SURVEYED IN THE FIELD.

OPERATOR: TAPSTONE ENERGY

LEASE NAME: LEECH 16-34-9 1H

TOPOGRAPHIC & VEGETATION: LOCATION FELL IN A FIELD

GOOD DRILL SITE: YES

BEST ACCESSIBILITY TO LOCATION: SOUTH OR EAST LINE

DISTANCE & DIRECTION FROM HWY JCT OR TOWN: FROM THE JCT. OF STATE HWY 2 AND SW 140 AVENUE, TRAVEL SOUTH ON SW 140 AVENUE FOR APPROXIMATELY 4.98 MILES, TO THE JCT. OF SW 140 AVENUE AND SW 50 ROAD, TRAVEL WEST ON SW 50 ROAD FOR APPROXIMATELY 0.13 MILES.

REFERENCE STAKES OR ALTERNATE LOCATION STAKES SET: NONE

(THE FOLLOWING INFORMATION WAS GATHERED USING A GPS RECEIVER ACCURACY ±2-3 METERS)

GPS DATUM: NAD-27
LAT: 37.080405° N
LONG: -98.294797° W

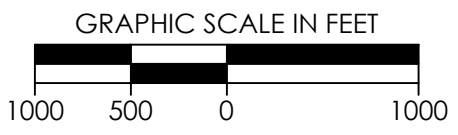
STATE PLANE COORDINATES:
ZONE: KS-SOUTH NAD-27
X: 2059866.8
Y: 150716.3

ELEVATION:
1,282' GR. AT STAKE

GENERAL NOTES:
 THE TIES AND FOOTAGES SHOWN ON THIS PLAT ARE FROM LINES OF OCCUPATION FROM A SURVEY MADE ON THE GROUND AND / OR BEARING AND DISTANCES FROM THE GENERAL LAND OFFICE PLAT OF THE AREA SHOWN AND MAY NOT BE THE ACTUAL PROPERTY CORNERS. THIS PLAT DOES NOT REPRESENT A TRUE BOUNDARY SURVEY. DRILL SITE CONDITION DETERMINATIONS WERE MADE BY TAPSTONE ENERGY REPRESENTATIVES.

DATE STAKED: 11-23-15

COORDINATE VALUES ARE BASED ON NAD27 STATE PLANE COORDINATE SYSTEM, KANSAS SOUTH ZONE, U.S. SURVEY FOOT.



AS-DRILLED INFORMATION PROVIDED BY CLIENT.

REVISION			
	"LEECH 16-34-9 1H" PART OF SECTION 16, T-34-S, R-09-W AS-DRILLED PLAT HARPER COUNTY, KANSAS		
	SCALE: 1" = 1000'	DRAWN BY: J.PARKER	SHEET NO.: 1 OF 1
	PLOT DATE: 02-09-2016		