

Company: Ventex Operating Corp.
 Well: Meisinger #1-15
 Field: Lost Springs
 County: Marion State: Kansas

PLATFORM EXPRESS
ARRAY INDUCTION
GAMMA RAY - SP

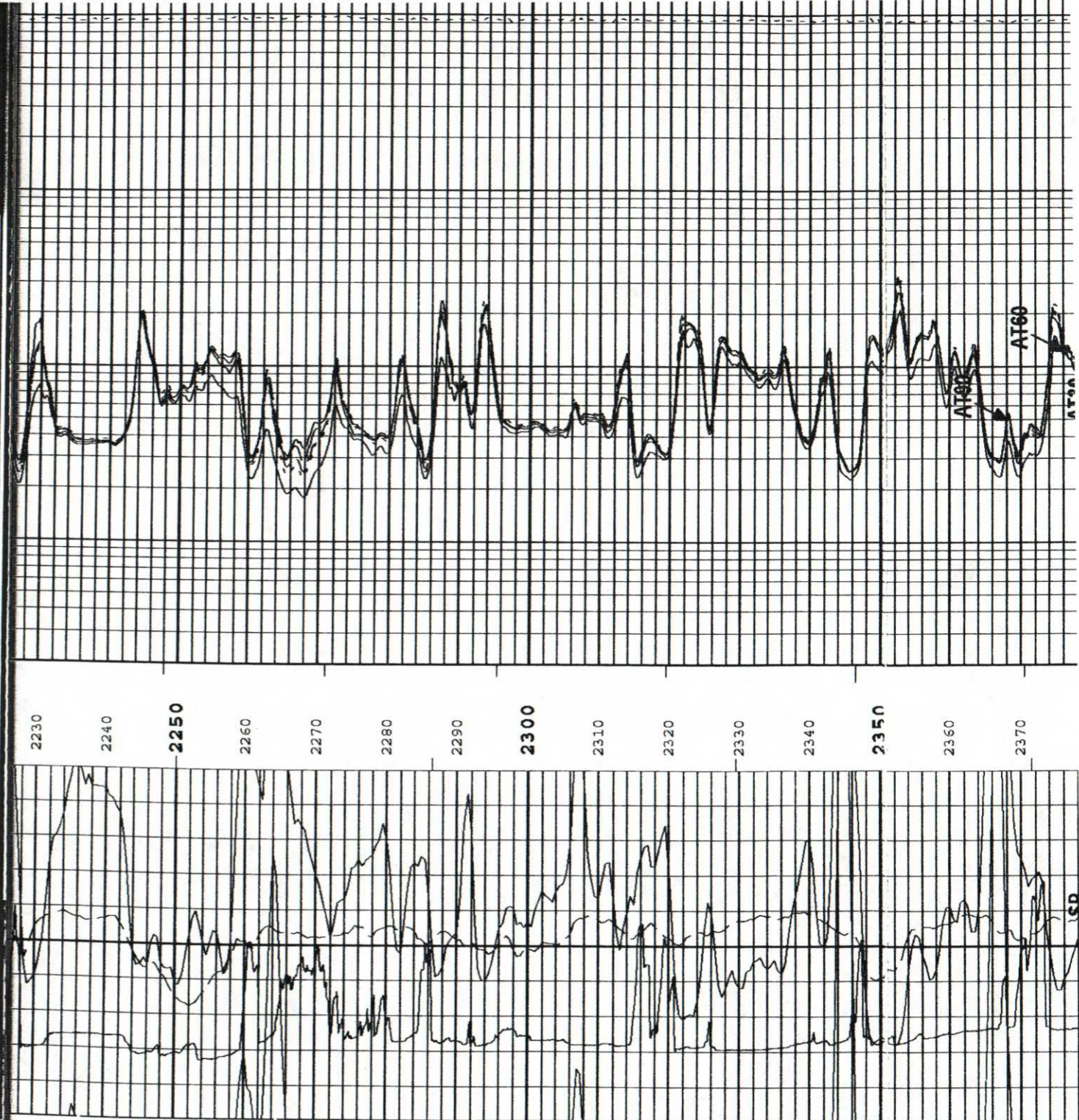
Location: 2040' FNL & 330' FEL
 Elev. K.B. 1391.00 ft
 G.L. 1391.00 ft
 D.F. 1391.00 ft

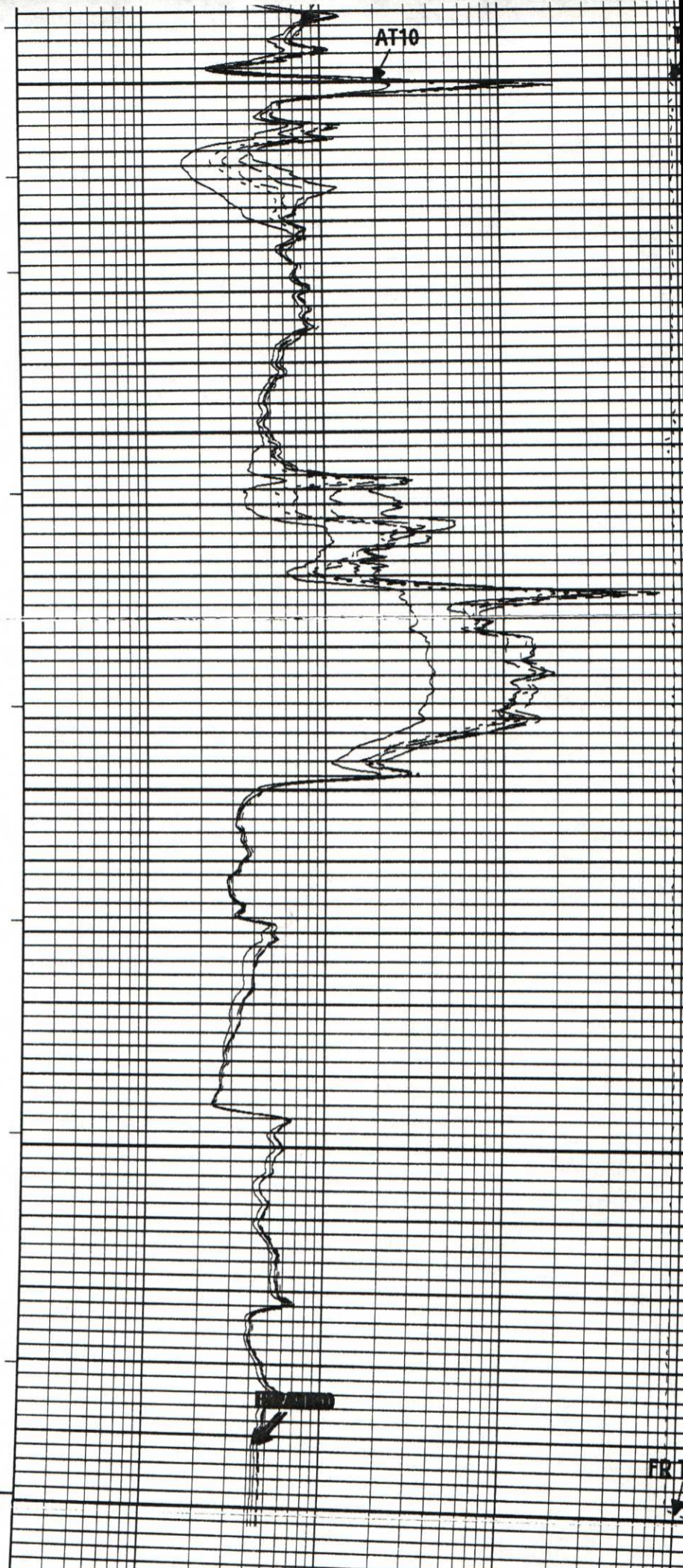
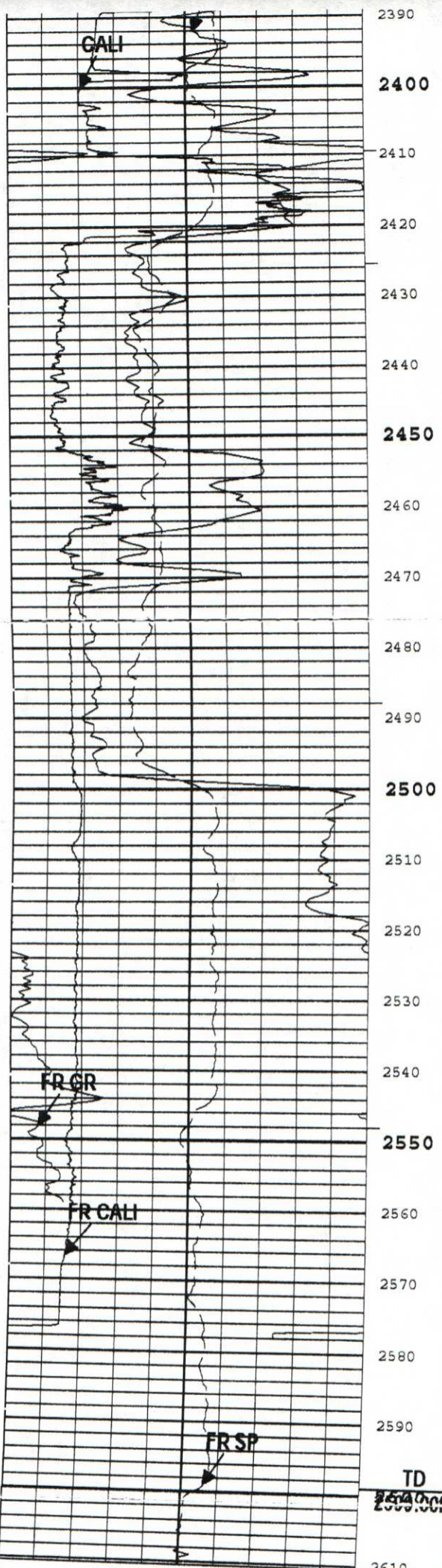
Permanent Datum: Ground Level Elev.: 1391.00 f
 Log Measured From: Kelly Bushing 0.00 ft above Perm. Datum
 Drilling Measured From: Kelly Bushing

API Serial No. 15-115-21428 Section: 15 Township: 19 Range: 3E

Logging Date: 26-May-2012
 Run Number: 1
 Depth Driller: 2601.00 ft
 Schlumberger Depth: 2599.00 ft
 Bottom Log Interval: 2599.00 ft
 Top Log Interval: 220.00 ft
 Logging Driller Size @ Depth: 8.625 in @ 223.00 ft
 Logging Schlumberger: 220 ft
 Bit Size: 7.875 in
 Type Fluid In Hole: Fresh WBM

Density	Viscosity	9.2 lbm/gal	34 s
Fluid Loss	PH	7.4 cm3	9
Source of Sample: Active Tank			
MI @ Meas Temp		1.23 ohm.m @ 93 degF	
MF @ Meas Temp		1.05 ohm.m @ 93 degF	
MC @ Meas Temp		1.72 ohm.m @ 93 degF	
Source RMF	RMC	Calculated	Calculated
MI @ BHT	RMF @ BHT	1.16 @ 99	0.99 @ 99
Max Recorded Temperatures: 99 degF			
Recirculation Stopped	Time	26-May-2012	06:30:00
Logger on Bottom	Time	26-May-2012	14:45:00
Well Number	Location:	2281	Elk City, OK
Recorded By	Arona Ndiaye		
Witnessed By	Kirk Berghuis		





Caliper (CALI) HDRS-H		
6	in	16
Gamma Ray (GR) HGNS-H		
0	gAPI	150
Spontaneous Potential (SP) AIT-M		
-160	mV	40

0.2	Array Induction Two Foot Resistivity A10 (AT10) AIT-M	ohm.m
0.2	Array Induction Two Foot Resistivity A20 (AT20) AIT-M	ohm.m
0.2	Array Induction Two Foot Resistivity A30 (AT30) AIT-M	ohm.m
0.2	Array Induction Two Foot Resistivity A60 (AT60) AIT-M	ohm.m
0.2	Array Induction Two Foot Resistivity A90 (AT90) AIT-M	ohm.m