



TEMPORARY ABANDONMENT WELL APPLICATION

All blanks must be complete

OPERATOR: License# _____
Name: _____
Address 1: _____
Address 2: _____
City: _____ State: _____ Zip: _____ + _____
Contact Person: _____
Phone: (_____) _____
Contact Person Email: _____
Field Contact Person: _____
Field Contact Person Phone: (_____) _____

API No. 15- _____
Spot Description: _____
____ - ____ - ____ - ____ Sec. _____ Twp. _____ S. R. _____ E W
_____ feet from N / S Line of Section
_____ feet from E / W Line of Section
GPS Location: Lat: _____, Long: _____
(e.g. xx.xxxxx) (e.g. -xxx.xxxxx)
Datum: NAD27 NAD83 WGS84
County: _____ Elevation: _____ GL KB
Lease Name: _____ Well #: _____
Well Type: (check one) Oil Gas OG WSW Other: _____
 SWD Permit #: _____ ENHR Permit #: _____
 Gas Storage Permit #: _____
Spud Date: _____ Date Shut-In: _____

	Conductor	Surface	Production	Intermediate	Liner	Tubing
Size						
Setting Depth						
Amount of Cement						
Top of Cement						
Bottom of Cement						

Casing Fluid Level from Surface: _____ How Determined? _____ Date: _____
Casing Squeeze(s): _____ to _____ w / _____ sacks of cement, _____ to _____ w / _____ sacks of cement. Date: _____
(top) (bottom) (top) (bottom)
Do you have a valid Oil & Gas Lease? Yes No
Depth and Type: Junk in Hole at _____ Tools in Hole at _____ Casing Leaks: Yes No Depth of casing leak(s): _____
(depth) (depth)
Type Completion: ALT. I ALT. II Depth of: DV Tool: _____ w / _____ sacks of cement Port Collar: _____ w / _____ sack of cement
(depth) (depth)
Packer Type: _____ Size: _____ Inch Set at: _____ Feet
Total Depth: _____ Plug Back Depth: _____ Plug Back Method: _____

Geological Data:

Formation Name	Formation Top	Formation Base	Completion Information
1. _____	At: _____	to _____ Feet	Perforation Interval _____ to _____ Feet or Open Hole Interval _____ to _____ Feet
2. _____	At: _____	to _____ Feet	Perforation Interval _____ to _____ Feet or Open Hole Interval _____ to _____ Feet

UNDER PENALTY OF PERJURY I HEREBY ATTEST THAT THE INFORMATION CONTAINED HEREIN IS TRUE AND CORRECT TO THE BEST OF MY KNOWLEDGE

Submitted Electronically

Do NOT Write in This Space - KCC USE ONLY

Date Tested: _____ Results: _____ Date Plugged: _____ Date Repaired: _____ Date Put Back in Service: _____

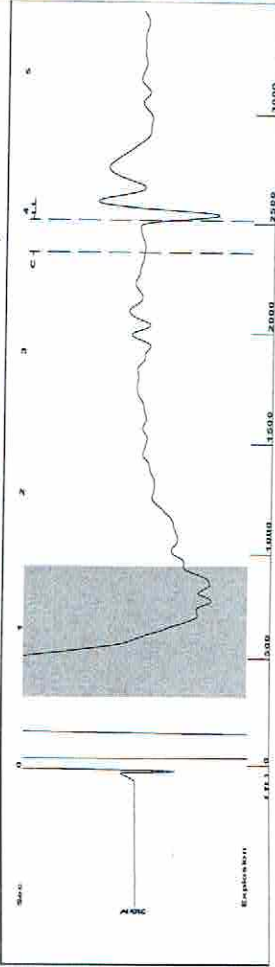
Review Completed by: _____ Comments: _____

TA Approved: Yes Denied Date: _____

Mail to the Appropriate KCC Conservation Office:

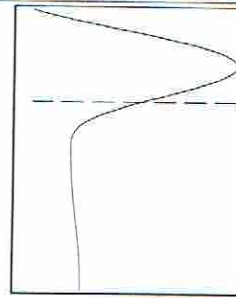
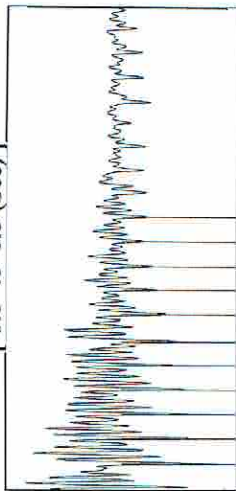
	KCC District Office #1 - 210 E. Frontview, Suite A, Dodge City, KS 67801	Phone 620.225.8888
	KCC District Office #2 / UPGS - 3450 N. Rock Road, Building 600, Suite 601, Wichita, KS 67226	Phone 316.630.4000
	KCC District Office #3 - 1500 SW Seventh Steet, Chanute, KS 66720	Phone 620.432.2300
	KCC District Office #4 - 2301 E. 13th Street, Hays, KS 67601-2651	Phone 785.625.0550

Group: TAD Well: Earnest 2 (acquired on: 03/03/16 14:05:17)



Filter Type High Pass Automatic Collar Count Yes Time 3,941 sec
 Manual Acoustic Veloc 255.45 ft/s Manual JTS/sec 19,802 Joints 79,3258 Jts
 Depth 2514.63 ft

1.05 to 1.5 (Sec)



Analysis Method: Automatic

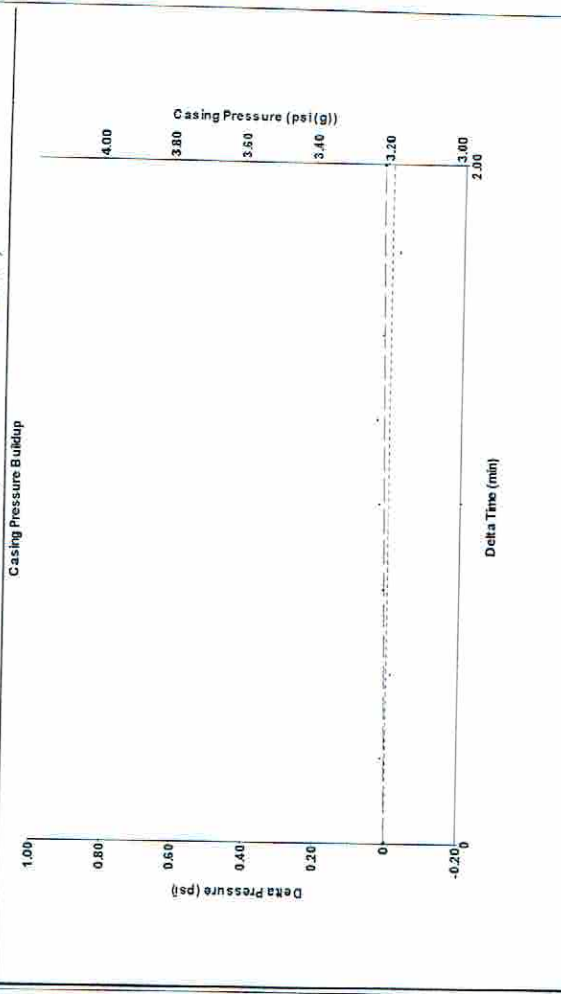
Group: TAD Well: Earnest 2 (acquired on: 03/03/16 14:05:17)

Production	Potential	Casing Pressure	3.2 psi (g)
Oil	- * - BBL/D	Casing Pressure Buildup	0.025 psi
Water	- * - BBL/D		2.00 min
Gas	- * - Mscf/D	Gas/Liquid Interface Pressure	4.3 psi (g)
IPR Method	Vogel		
PBHP/SBHP	- * -	Liquid Level Depth	2514.63 ft
Production Efficiency	0.0	Pump Intake Depth	2828.00 ft
Oil	40 deg-API	Formation Depth	2798.00 ft
Water	1.05 Sp Gr-H2O		
Gas	0.73 Sp Gr-AIR		
Acoustic Velocity	1276.14 ft/s		
Formation Submergence			
Total Gaseous Liquid Column HT (TVD)	313 ft		
Equivalent Gas Free Liquid HT (TVD)	313 ft		
Acoustic Test			



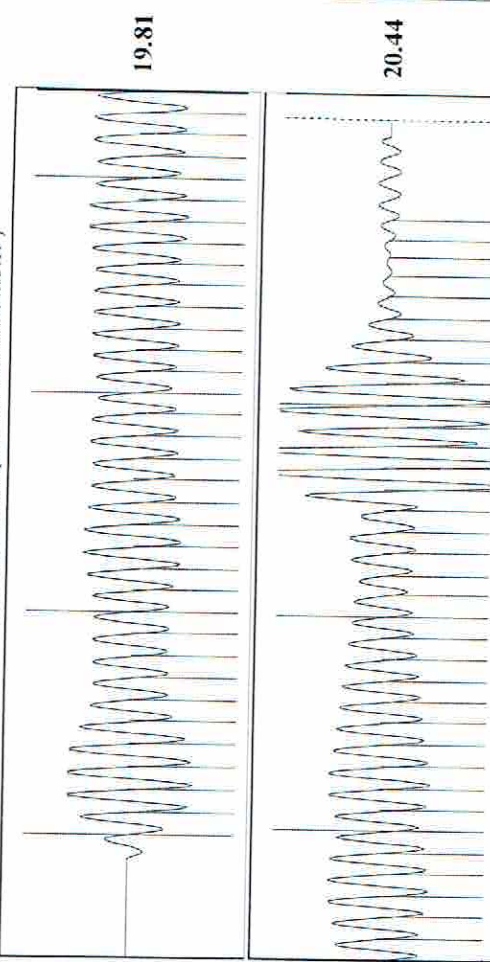
Producing
 Annular Gas Flow 0 Mscf/D
 % Liquid 100 %
 Pump Intake 146.8 psi (g)
 Producing BHP 133.1 psi (g)
 Static BHP - * - psi (g)

Group: TAD Well: Earnest 2 (acquired on: 03/03/16 14:05:17)



Change in Pressure 0.02 psi PT8746 Range 0 - ? psi
 Change in Time 2.00 min

Group: TAD Well: Earnest 2 (acquired on: 03/03/16 14:05:17)



Acoustic Velocity 1276.14 ft/s Joints counted 69
 Joints Per Second 20.1284 Jts/sec Joints to liquid level 79,3258
 Depth to liquid level 2514.63 ft Filter Width 17,802
 Automatic Collar Count Yes Time to 1st Collar 0.284 3,712

Conservation Division
District Office No. 1
210 E. Frontview, Suite A
Dodge City, KS 67801



Phone: 620-225-8888
Fax: 620-225-8885
<http://kcc.ks.gov/>

Jay Scott Emler, Chairman
Shari Feist Albrecht, Commissioner
Pat Apple, Commissioner

Sam Brownback, Governor

March 08, 2016

Katherine McClurkan
Merit Energy Company, LLC
13727 Noel Road, Suite 1200
Dallas, TX 75240

Re: Temporary Abandonment
API 15-055-20362-00-00
EARNEST 2
NW/4 Sec.04-24S-34W
Finney County, Kansas

Dear Katherine McClurkan:

"Your temporary abandonment (TA) application for the well listed above has been approved. In accordance with K.A.R. 82-3-111 the TA status of this well will expire 03/08/2017.

- * If you return this well to service or plug it, please notify the District Office.
- * If you sell this well you are required to file a Transfer of Operator form, T-1.
- * If the well will remain temporarily abandoned, you must submit a new TA application, CP-111, before 03/08/2017.

You may contact me at the number above if you have questions.

Very truly yours,

Michael Maier"