



TEMPORARY ABANDONMENT WELL APPLICATION

OPERATOR: License# _____
 Name: _____
 Address 1: _____
 Address 2: _____
 City: _____ State: _____ Zip: _____ + _____
 Contact Person: _____
 Phone: (_____) _____
 Contact Person Email: _____
 Field Contact Person: _____
 Field Contact Person Phone: (_____) _____

API No. 15- _____
 Spot Description: _____
 _____ - _____ - _____ - _____ Sec. _____ Twp. _____ S. R. _____ E W
 _____ feet from N / S Line of Section
 _____ feet from E / W Line of Section
 GPS Location: Lat: _____, Long: _____
(e.g. xx.xxxxx) (e.g. -xxx.xxxxx)
 Datum: NAD27 NAD83 WGS84
 County: _____ Elevation: _____ GL KB
 Lease Name: _____ Well #: _____
 Well Type: (check one) Oil Gas OG WSW Other: _____
 SWD Permit #: _____ ENHR Permit #: _____
 Gas Storage Permit #: _____
 Spud Date: _____ Date Shut-In: _____

| | Conductor | Surface | Production | Intermediate | Liner | Tubing |
|------------------|-----------|---------|------------|--------------|-------|--------|
| Size | | | | | | |
| Setting Depth | | | | | | |
| Amount of Cement | | | | | | |
| Top of Cement | | | | | | |
| Bottom of Cement | | | | | | |

Casing Fluid Level from Surface: _____ How Determined? _____ Date: _____

Casing Squeeze(s): _____ to _____ w / _____ sacks of cement, _____ to _____ w / _____ sacks of cement. Date: _____
(top) (bottom) (top) (bottom)

Do you have a valid Oil & Gas Lease? Yes No

Depth and Type: Junk in Hole at _____ Tools in Hole at _____ Casing Leaks: Yes No Depth of casing leak(s): _____
(depth) (depth)

Type Completion: ALT. I ALT. II Depth of: DV Tool: _____ w / _____ sacks of cement Port Collar: _____ w / _____ sack of cement
(depth) (depth)

Packer Type: _____ Size: _____ Inch Set at: _____ Feet

Total Depth: _____ Plug Back Depth: _____ Plug Back Method: _____

Geological Data:

| Formation Name | Formation Top | Formation Base | Completion Information |
|----------------|---------------|----------------|--|
| 1. _____ | At: _____ | to _____ Feet | Perforation Interval _____ to _____ Feet or Open Hole Interval _____ to _____ Feet |
| 2. _____ | At: _____ | to _____ Feet | Perforation Interval _____ to _____ Feet or Open Hole Interval _____ to _____ Feet |

~~UNDER PENALTY OF PERJURY I HEREBY ATTEST THAT THE INFORMATION CONTAINED HEREIN IS TRUE AND CORRECT TO THE BEST OF MY KNOWLEDGE~~

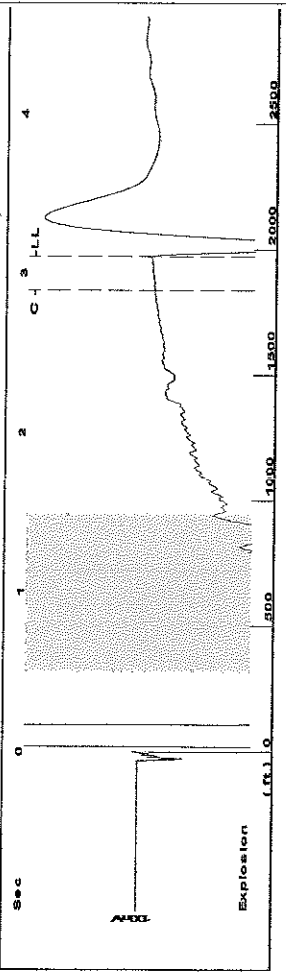
Submitted Electronically

| | | | | | |
|---|--|----------------|---------------------|----------------------|---------------------------------|
| Do NOT Write in This Space - KCC USE ONLY | Date Tested: _____ | Results: _____ | Date Plugged: _____ | Date Repaired: _____ | Date Put Back in Service: _____ |
| | Review Completed by: _____ Comments: _____ | | | | |
| TA Approved: <input type="checkbox"/> Yes <input type="checkbox"/> Denied Date: _____ | | | | | |

Mail to the Appropriate KCC Conservation Office:

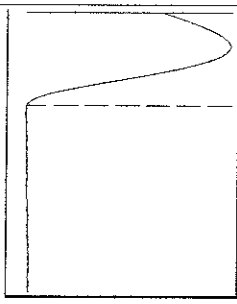
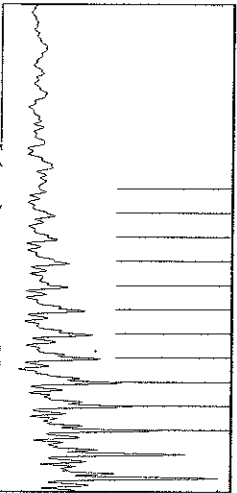
| | | |
|--|---|--------------------|
| | KCC District Office #1 - 210 E. Frontview, Suite A, Dodge City, KS 67801 | Phone 620.225.8888 |
| | KCC District Office #2 / UPGS - 3450 N. Rock Road, Building 600, Suite 601, Wichita, KS 67226 | Phone 316.630.4000 |
| | KCC District Office #3 - 1500 SW Seventh Steet, Chanute, KS 66720 | Phone 620.432.2300 |
| | KCC District Office #4 - 2301 E. 13th Street, Hays, KS 67601-2651 | Phone 785.625.0550 |

Group: MyWells Well: Covet Trust (acquired on: 01/26/16 10:05:45)



Filter Type High Pass
 Manual Acoustic Velo 1250.91 ft/s
 Automatic Collar Count Yes
 Manual JTS/sec 20.202
 Time 3.104 sec
 Joints 63.6839 Jts
 Depth 1971.65 ft

[0.5 to 1.5 (Sec)]

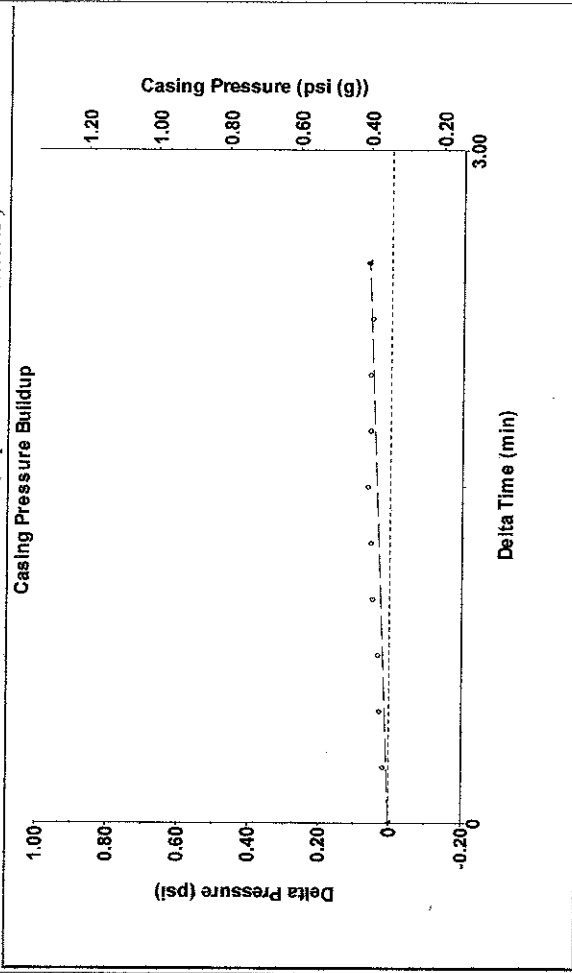


Analysis Method: Automatic

Group: MyWells Well: Covet Trust (acquired on: 01/26/16 10:05:45)

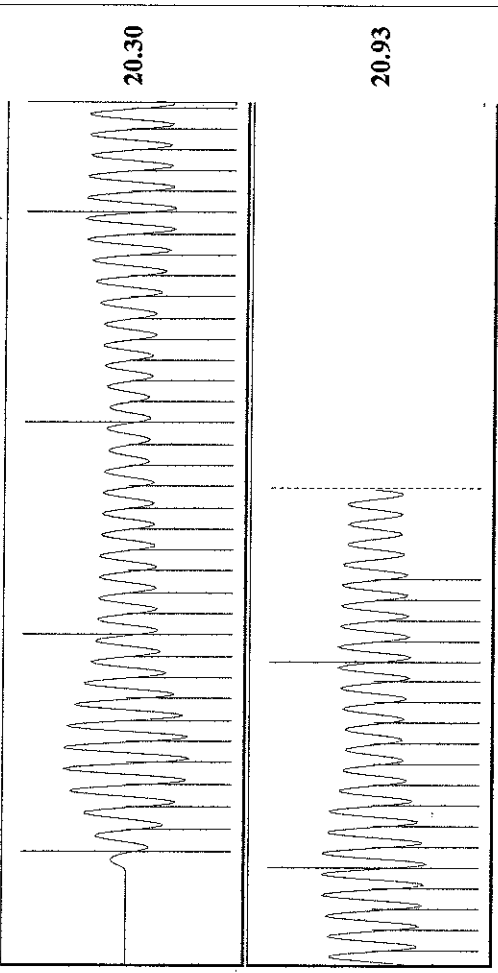
| | | | |
|--------------------------------------|-------------------------|-------------------------------|-------------------|
| Production | Potential | Casing Pressure | Producing |
| Oil - *- BBL/D | 0.3 psi (g) | 0.3 psi (g) | Annular |
| Water - *- BBL/D | Casing Pressure Buildup | 0.053 psi | Gas Flow 0 Mscf/D |
| Gas - *- Mscf/D | 2.50 min | Gas/Liquid Interface Pressure | % Liquid 100 % |
| IPR Method Vogel | 1.1 psi (g) | Liquid Level Depth | Pump Intake |
| PBHP/SBHP - *- | 0.0 | 1971.65 ft | 1092.3 psi (g) |
| Production Efficiency 0.0 | | Pump Intake Depth | Producing BHP |
| Oil 40 deg.API | | 5300.00 ft | 1092.3 psi (g) |
| Water 1.05 Sp.Gr.H2O | | Formation Depth | Static BHP |
| Gas 0.71 Sp.Gr.AIR | | 5300.00 ft | - *- psi (g) |
| Acoustic Velocity 1270.4 ft/s | | | |
| Formation Submergence | | | |
| Total Gaseous Liquid Column HT (TVD) | 3328 ft | | |
| Equivalent Gas Free Liquid HT (TVD) | 3328 ft | | |
| Acoustic Test | | | |

Group: MyWells Well: Covet Trust (acquired on: 01/26/16 10:05:45)



Change in Pressure 0.06 psi
 Change in Time 2.50 min
 PT12865 Range

Group: MyWells Well: Covet Trust (acquired on: 01/26/16 10:05:45)



Acoustic Velocity 1270.4 ft/s
 Joints Per Second 20.5167 jts/sec
 Depth to liquid level 1971.65 ft
 Automatic Collar Count Yes
 Joints counted 54
 Joints to liquid level 63.6839
 Filter Width 18.202
 Time to 1st Collar 0.26
 22.202
 2.892

Conservation Division
District Office No. 1
210 E. Frontview, Suite A
Dodge City, KS 67801



Phone: 620-225-8888
Fax: 620-225-8885
<http://kcc.ks.gov/>

Jay Scott Emler, Chairman
Shari Feist Albrecht, Commissioner
Pat Apple, Commissioner

Sam Brownback, Governor

March 08, 2016

Melody C. Fletcher
Oil Producers Inc. of Kansas
1710 WATERFRONT PKWY
WICHITA, KS 67206-6603

Re: Temporary Abandonment
API 15-175-22144-00-00
Covel Trust 2A
NE/4 Sec.24-31S-32W
Seward County, Kansas

Dear Melody C. Fletcher:

"Your temporary abandonment (TA) application for the well listed above has been approved. In accordance with K.A.R. 82-3-111 the TA status of this well will expire 03/08/2017.

- * If you return this well to service or plug it, please notify the District Office.
- * If you sell this well you are required to file a Transfer of Operator form, T-1.
- * If the well will remain temporarily abandoned, you must submit a new TA application, CP-111, before 03/08/2017.

You may contact me at the number above if you have questions.

Very truly yours,

Michael Maier"