



**TEMPORARY ABANDONMENT WELL APPLICATION**

All blanks must be complete

OPERATOR: License# \_\_\_\_\_  
Name: \_\_\_\_\_  
Address 1: \_\_\_\_\_  
Address 2: \_\_\_\_\_  
City: \_\_\_\_\_ State: \_\_\_\_\_ Zip: \_\_\_\_\_ + \_\_\_\_\_  
Contact Person: \_\_\_\_\_  
Phone: ( \_\_\_\_\_ ) \_\_\_\_\_  
Contact Person Email: \_\_\_\_\_  
Field Contact Person: \_\_\_\_\_  
Field Contact Person Phone: ( \_\_\_\_\_ ) \_\_\_\_\_

API No. 15- \_\_\_\_\_  
Spot Description: \_\_\_\_\_  
\_\_\_\_ - \_\_\_\_ - \_\_\_\_ - \_\_\_\_ Sec. \_\_\_\_\_ Twp. \_\_\_\_\_ S. R. \_\_\_\_\_  E  W  
\_\_\_\_\_ feet from  N /  S Line of Section  
\_\_\_\_\_ feet from  E /  W Line of Section  
GPS Location: Lat: \_\_\_\_\_, Long: \_\_\_\_\_  
(e.g. xx.xxxxx) (e.g. -xxx.xxxxx)  
Datum:  NAD27  NAD83  WGS84  
County: \_\_\_\_\_ Elevation: \_\_\_\_\_  GL  KB  
Lease Name: \_\_\_\_\_ Well #: \_\_\_\_\_  
Well Type: (check one)  Oil  Gas  OG  WSW  Other: \_\_\_\_\_  
 SWD Permit #: \_\_\_\_\_  ENHR Permit #: \_\_\_\_\_  
 Gas Storage Permit #: \_\_\_\_\_  
Spud Date: \_\_\_\_\_ Date Shut-In: \_\_\_\_\_

	Conductor	Surface	Production	Intermediate	Liner	Tubing
Size						
Setting Depth						
Amount of Cement						
Top of Cement						
Bottom of Cement						

Casing Fluid Level from Surface: \_\_\_\_\_ How Determined? \_\_\_\_\_ Date: \_\_\_\_\_

Casing Squeeze(s): \_\_\_\_\_ to \_\_\_\_\_ w / \_\_\_\_\_ sacks of cement, \_\_\_\_\_ to \_\_\_\_\_ w / \_\_\_\_\_ sacks of cement. Date: \_\_\_\_\_  
(top) (bottom) (top) (bottom)

Do you have a valid Oil & Gas Lease?  Yes  No

Depth and Type:  Junk in Hole at \_\_\_\_\_  Tools in Hole at \_\_\_\_\_ Casing Leaks:  Yes  No Depth of casing leak(s): \_\_\_\_\_  
(depth) (depth)

Type Completion:  ALT. I  ALT. II Depth of:  DV Tool: \_\_\_\_\_ w / \_\_\_\_\_ sacks of cement  Port Collar: \_\_\_\_\_ w / \_\_\_\_\_ sack of cement  
(depth) (depth)

Packer Type: \_\_\_\_\_ Size: \_\_\_\_\_ Inch Set at: \_\_\_\_\_ Feet

Total Depth: \_\_\_\_\_ Plug Back Depth: \_\_\_\_\_ Plug Back Method: \_\_\_\_\_

**Geological Data:**

Formation Name	Formation Top	Formation Base	Completion Information
1. _____	At: _____	to _____ Feet	Perforation Interval _____ to _____ Feet or Open Hole Interval _____ to _____ Feet
2. _____	At: _____	to _____ Feet	Perforation Interval _____ to _____ Feet or Open Hole Interval _____ to _____ Feet

UNDER PENALTY OF PERJURY I HEREBY ATTEST THAT THE INFORMATION CONTAINED HEREIN IS TRUE AND CORRECT TO THE BEST OF MY KNOWLEDGE

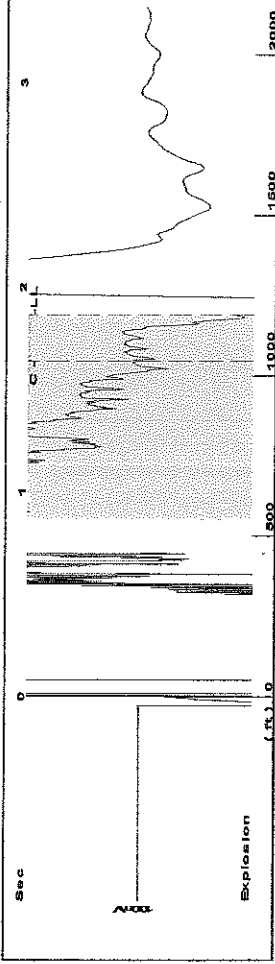
**Submitted Electronically**

<b>Do NOT Write in This Space - KCC USE ONLY</b>	Date Tested: _____	Results: _____	Date Plugged: _____	Date Repaired: _____	Date Put Back in Service: _____
	Review Completed by: _____ Comments: _____				
TA Approved: <input type="checkbox"/> Yes <input type="checkbox"/> Denied Date: _____					

**Mail to the Appropriate KCC Conservation Office:**

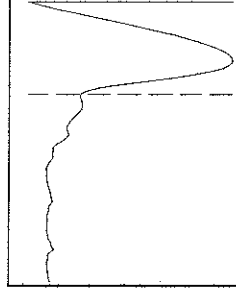
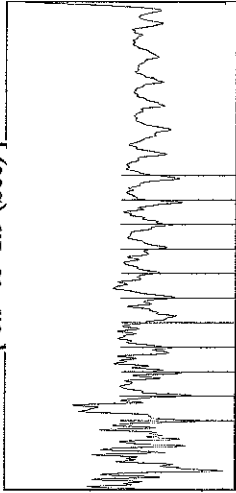
	KCC District Office #1 - 210 E. Frontview, Suite A, Dodge City, KS 67801	Phone 620.225.8888
	KCC District Office #2 / UPGS - 3450 N. Rock Road, Building 600, Suite 601, Wichita, KS 67226	Phone 316.630.4000
	KCC District Office #3 - 1500 SW Seventh Steet, Chanute, KS 66720	Phone 620.432.2300
	KCC District Office #4 - 2301 E. 13th Street, Hays, KS 67601-2651	Phone 785.625.0550

Group: MyWells Well: Harvey 2A-7 (acquired on: 02/05/16 11:46:14)



Filter Type High Pass Automatic Collar Count Yes  
 Manual Acoustic Velo 1278.33 ft/s Manual JTS/sec 19.8807  
 Time 1.865 sec  
 Joints 37.0257 Jts  
 Depth 1190.38 ft

[ 0.9 to 1.9 (Sec) ]

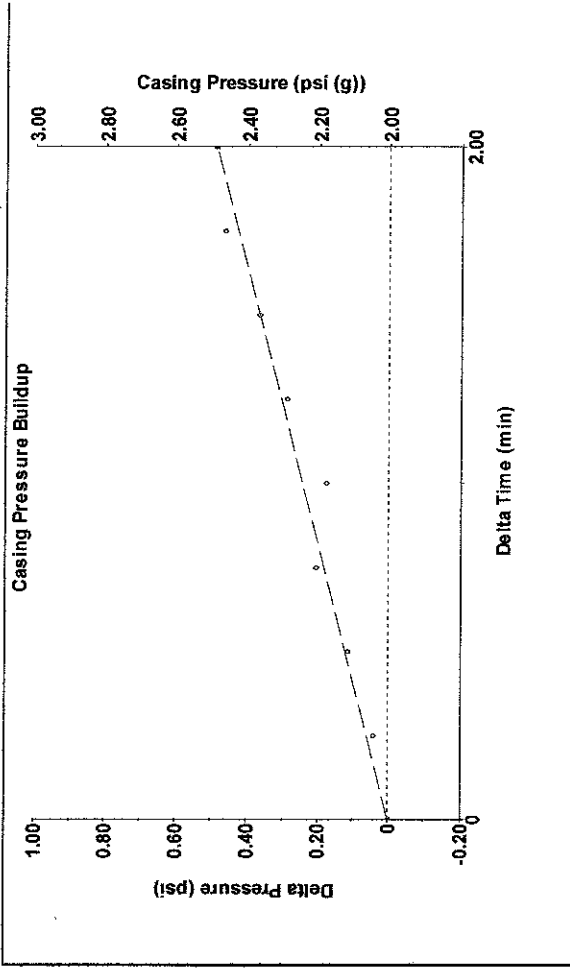


**Analysis Method: Automatic**

Group: MyWells Well: Harvey 2A-7 (acquired on: 02/05/16 11:46:14)

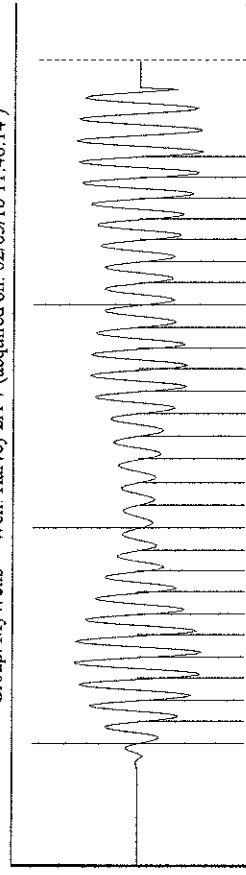
Production	Potential	Casing Pressure	Producing
Oil - * -	- * - BBL/D	2.0 psi (g)	Annular
Water - * -	- * - BBL/D	0.489 psi	Gas Flow 2 Mscf/D
Gas - * -	- * - Mscf/D	2.00 min	% Liquid 87 %
IPR Method	Vogel	Gas/Liquid Interface Pressure	Pump Intake
PBHP/SBHP	- * -	2.5 psi (g)	410.6 psi (g)
Production Efficiency	0.0	Liquid Level Depth	Producing BHP
		1190.38 ft	410.6 psi (g)
Oil 40 deg API		Pump Intake Depth	Static BHP
Water 1.05 Sp.Gr.H2O		2577.00 ft	- * - psi (g)
Gas 0.71 Sp.Gr.AIR		Formation Depth	
Acoustic Velocity	1276.54 ft/s	2577.00 ft	
Formation Submergence			
Total Gaseous Liquid Column HT (TVD)	1387 ft		
Equivalent Gas Free Liquid HT (TVD)	1208 ft		
Acoustic Test			

Group: MyWells Well: Harvey 2A-7 (acquired on: 02/05/16 11:46:14)



Change in Pressure 0.49 psi  
 Change in Time 2.00 min  
 PT12865 Range  
 0 - 7 psi

Group: MyWells Well: Harvey 2A-7 (acquired on: 02/05/16 11:46:14)



19.85

Acoustic Velocity 1276.54 ft/s  
 Joints Per Second 19.8529 jts/sec  
 Depth to liquid level 1190.38 ft  
 Automatic Collar Count Yes  
 Joints counted 27  
 Joints to liquid level 37.0257  
 Filter Width 17.8807  
 Time to 1st Collar 0.28  
 21.8807  
 1.64

Conservation Division  
District Office No. 1  
210 E. Frontview, Suite A  
Dodge City, KS 67801



Phone: 620-225-8888  
Fax: 620-225-8885  
<http://kcc.ks.gov/>

Jay Scott Emler, Chairman  
Shari Feist Albrecht, Commissioner  
Pat Apple, Commissioner

Sam Brownback, Governor

March 08, 2016

Melody C. Fletcher  
Oil Producers, Inc. of Kansas  
1710 WATERFRONT PKWY  
WICHITA, KS 67206-6603

Re: Temporary Abandonment  
API 15-175-22068-00-00  
HARVEY 2A-7  
SE/4 Sec.07-33S-32W  
Seward County, Kansas

Dear Melody C. Fletcher:

"Your temporary abandonment (TA) application for the well listed above has been approved. In accordance with K.A.R. 82-3-111 the TA status of this well will expire 03/08/2017.

- \* If you return this well to service or plug it, please notify the District Office.
- \* If you sell this well you are required to file a Transfer of Operator form, T-1.
- \* If the well will remain temporarily abandoned, you must submit a new TA application, CP-111, before 03/08/2017.

You may contact me at the number above if you have questions.

Very truly yours,

Michael Maier"