



TEMPORARY ABANDONMENT WELL APPLICATION

OPERATOR: License# _____
 Name: _____
 Address 1: _____
 Address 2: _____
 City: _____ State: _____ Zip: _____ + _____
 Contact Person: _____
 Phone: (_____) _____
 Contact Person Email: _____
 Field Contact Person: _____
 Field Contact Person Phone: (_____) _____

API No. 15- _____
 Spot Description: _____
 _____ - _____ - _____ - _____ Sec. _____ Twp. _____ S. R. _____ E W
 _____ feet from N / S Line of Section
 _____ feet from E / W Line of Section
 GPS Location: Lat: _____, Long: _____
(e.g. xx.xxxxx) (e.g. -xxx.xxxxx)
 Datum: NAD27 NAD83 WGS84
 County: _____ Elevation: _____ GL KB
 Lease Name: _____ Well #: _____
 Well Type: (check one) Oil Gas OG WSW Other: _____
 SWD Permit #: _____ ENHR Permit #: _____
 Gas Storage Permit #: _____
 Spud Date: _____ Date Shut-In: _____

	Conductor	Surface	Production	Intermediate	Liner	Tubing
Size						
Setting Depth						
Amount of Cement						
Top of Cement						
Bottom of Cement						

Casing Fluid Level from Surface: _____ How Determined? _____ Date: _____

Casing Squeeze(s): _____ to _____ w / _____ sacks of cement, _____ to _____ w / _____ sacks of cement. Date: _____
(top) (bottom) (top) (bottom)

Do you have a valid Oil & Gas Lease? Yes No

Depth and Type: Junk in Hole at _____ Tools in Hole at _____ Casing Leaks: Yes No Depth of casing leak(s): _____
(depth) (depth)

Type Completion: ALT. I ALT. II Depth of: DV Tool: _____ w / _____ sacks of cement Port Collar: _____ w / _____ sack of cement
(depth) (depth)

Packer Type: _____ Size: _____ Inch Set at: _____ Feet

Total Depth: _____ Plug Back Depth: _____ Plug Back Method: _____

Geological Data:

Formation Name	Formation Top	Formation Base	Completion Information
1. _____	At: _____	to _____ Feet	Perforation Interval _____ to _____ Feet or Open Hole Interval _____ to _____ Feet
2. _____	At: _____	to _____ Feet	Perforation Interval _____ to _____ Feet or Open Hole Interval _____ to _____ Feet

~~UNDER PENALTY OF PERJURY I HEREBY ATTEST THAT THE INFORMATION CONTAINED HEREIN IS TRUE AND CORRECT TO THE BEST OF MY KNOWLEDGE~~

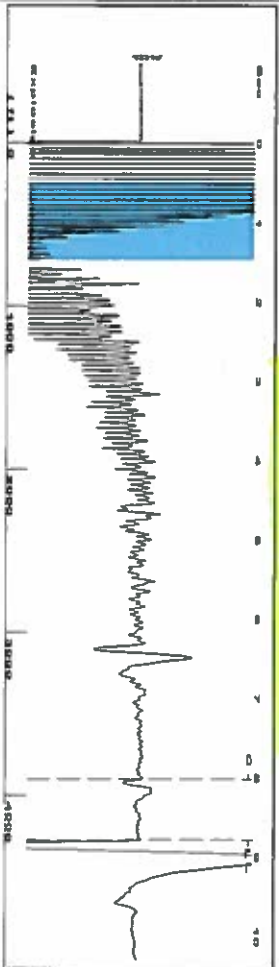
Submitted Electronically

Do NOT Write in This Space - KCC USE ONLY	Date Tested: _____	Results: _____	Date Plugged: _____	Date Repaired: _____	Date Put Back in Service: _____
	Review Completed by: _____ Comments: _____				
TA Approved: <input type="checkbox"/> Yes <input type="checkbox"/> Denied Date: _____					

Mail to the Appropriate KCC Conservation Office:

	KCC District Office #1 - 210 E. Frontview, Suite A, Dodge City, KS 67801	Phone 620.225.8888
	KCC District Office #2 / UPGS - 3450 N. Rock Road, Building 600, Suite 601, Wichita, KS 67226	Phone 316.630.4000
	KCC District Office #3 - 1500 SW Seventh Steet, Chanute, KS 66720	Phone 620.432.2300
	KCC District Office #4 - 2301 E. 13th Street, Hays, KS 67601-2651	Phone 785.625.0550

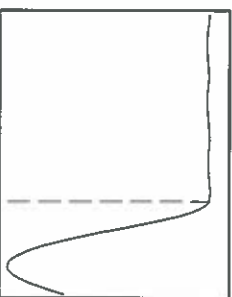
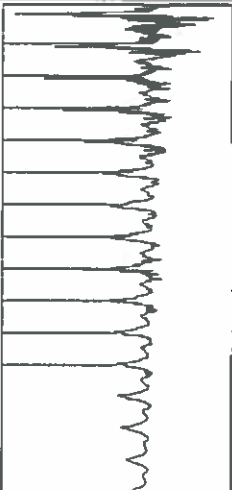
Group: Gas Wells Well: Bergner 7 (acquired on: 04/14/16 13:49:24)



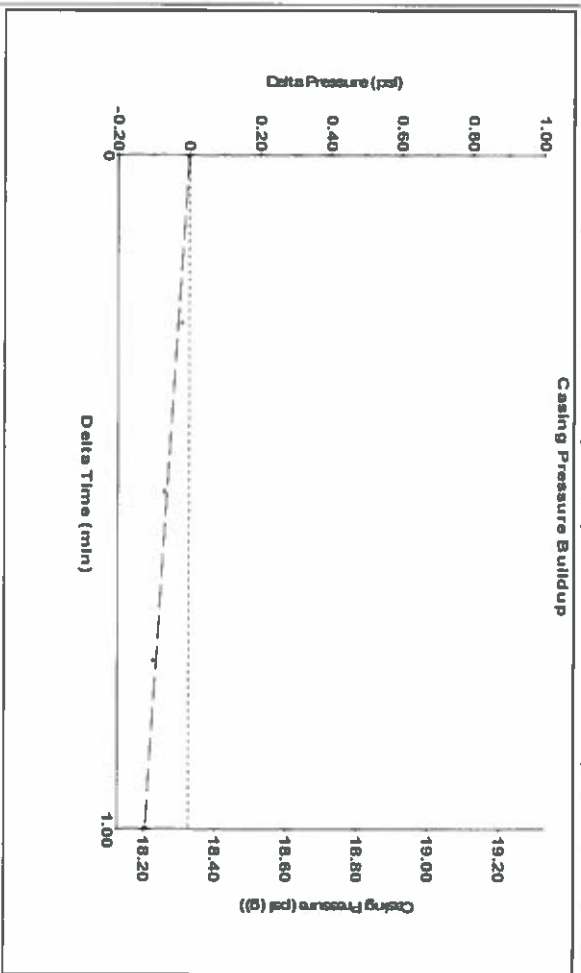
Filter Type High Pass Automatic Collar Count Yes
 Manual Acoustic Velocity 606 ft/s Manual JTS/Sec 15.1515

Time 8.788 sec
 Joints 134.695 Jts
 Depth 4269.83 ft

1.0.5 to 1.5 (Sec) 1



Group: Gas Wells Well: Bergner 7 (acquired on: 04/14/16 13:49:24)



Change in Pressure -0.12 psi PT16716
 Change in Time 1.00 min Range 0 - 2 psi

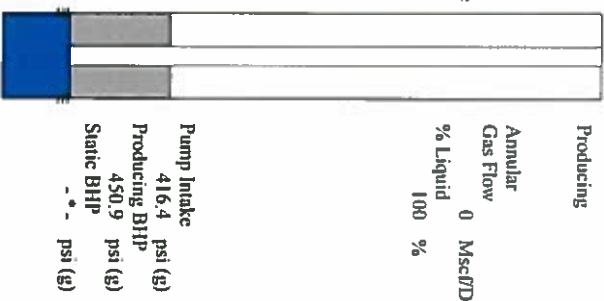
Group: Gas Wells Well: Bergner 7 (acquired on: 04/14/16 13:49:24)

Analysis Method: Automatic

Production Current	Potential	Casing Pressure	Producing
Oil - -	- -	18.3 psi (g)	Annular
Water - -	- -	BB/LD Casing Pressure Buildup	Gas Flow
Gas - -	- -	-0.1 psi	% Liquid
	- -	Misc/D	%
IPR Method	Vogel	Gas/Liquid Interface Pressure	
PBHP/SBHP	- -	23.5 psi (g)	
Production Efficiency	0.0		

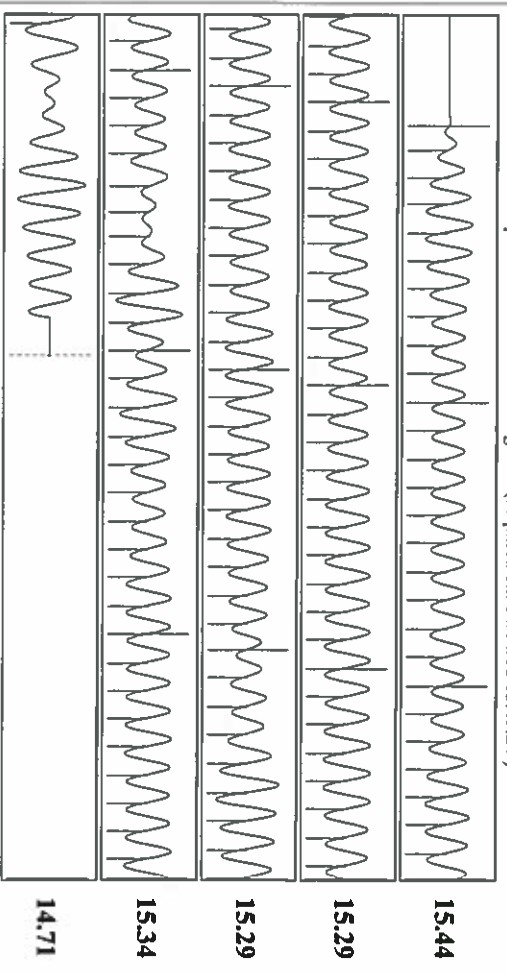
Oil	40 deg API	Liquid Level Depth
Water	1.05 Sp.Gr./1120	4269.83 ft
Gas	1.00 Sp.Gr./AIR	Pump Intake Depth
		5434.00 ft
		Formation Depth
		5510.00 ft

Acoustic Velocity	971.741 ft/s	Formation Submergence
		Total Gaseous Liquid Column HIT (TVD)
		Equivalent Gas Free Liquid HIT (TVD)
		1164 ft
		1164 ft



Pump Intake 416.4 psi (g)
 Producing BHP 450.9 psi (g)
 Static BHP - - psi (g)

Group: Gas Wells Well: Bergner 7 (acquired on: 04/14/16 13:49:24)



Acoustic Velocity 971.741 ft/s Joints counted 119
 Joints Per Second 15.3272 Jts/Sec Joints to liquid level 134.695
 Depth to liquid level 4269.83 ft Filler Width 13.1515
 Automatic Collar Count Yes Time to 1st Collar 0.256 8.02

Conservation Division
District Office No. 1
210 E. Frontview, Suite A
Dodge City, KS 67801



Phone: 620-225-8888
Fax: 620-225-8885
<http://kcc.ks.gov/>

Jay Scott Emler, Chairman
Shari Feist Albrecht, Commissioner
Pat Apple, Commissioner

Sam Brownback, Governor

April 19, 2016

Katherine McClurkan
Merit Energy Company, LLC
13727 Noel Road, Suite 1200
Dallas, TX 75240

Re: Temporary Abandonment
API 15-081-21664-00-00
Bergner 7-P17-28-34
SE/4 Sec.17-28S-34W
Haskell County, Kansas

Dear Katherine McClurkan:

"Your temporary abandonment (TA) application for the well listed above has been approved. In accordance with K.A.R. 82-3-111 the TA status of this well will expire 04/19/2017.

- * If you return this well to service or plug it, please notify the District Office.
- * If you sell this well you are required to file a Transfer of Operator form, T-1.
- * If the well will remain temporarily abandoned, you must submit a new TA application, CP-111, before 04/19/2017.

You may contact me at the number above if you have questions.

Very truly yours,

Michael Maier"