



TEMPORARY ABANDONMENT WELL APPLICATION

All blanks must be complete

OPERATOR: License# _____
Name: _____
Address 1: _____
Address 2: _____
City: _____ State: _____ Zip: _____ + _____
Contact Person: _____
Phone:(_____) _____
Contact Person Email: _____
Field Contact Person: _____
Field Contact Person Phone: (_____) _____

API No. 15- _____
Spot Description: _____
____ - ____ - ____ - ____ Sec. _____ Twp. _____ S. R. _____ E W
_____ feet from N / S Line of Section
_____ feet from E / W Line of Section
GPS Location: Lat: _____, Long: _____
(e.g. xx.xxxxx) (e.g. -xxx.xxxxx)
Datum: NAD27 NAD83 WGS84
County: _____ Elevation: _____ GL KB
Lease Name: _____ Well #: _____
Well Type: (check one) Oil Gas OG WSW Other: _____
 SWD Permit #: _____ ENHR Permit #: _____
 Gas Storage Permit #: _____
Spud Date: _____ Date Shut-In: _____

	Conductor	Surface	Production	Intermediate	Liner	Tubing
Size						
Setting Depth						
Amount of Cement						
Top of Cement						
Bottom of Cement						

Casing Fluid Level from Surface: _____ How Determined? _____ Date: _____

Casing Squeeze(s): _____ to _____ w / _____ sacks of cement, _____ to _____ w / _____ sacks of cement. Date: _____
(top) (bottom) (top) (bottom)

Do you have a valid Oil & Gas Lease? Yes No

Depth and Type: Junk in Hole at _____ Tools in Hole at _____ Casing Leaks: Yes No Depth of casing leak(s): _____
(depth) (depth)

Type Completion: ALT. I ALT. II Depth of: DV Tool: _____ w / _____ sacks of cement Port Collar: _____ w / _____ sack of cement
(depth) (depth)

Packer Type: _____ Size: _____ Inch Set at: _____ Feet

Total Depth: _____ Plug Back Depth: _____ Plug Back Method: _____

Geological Data:

Formation Name	Formation Top	Formation Base	Completion Information
1. _____	At: _____	to _____ Feet	Perforation Interval _____ to _____ Feet or Open Hole Interval _____ to _____ Feet
2. _____	At: _____	to _____ Feet	Perforation Interval _____ to _____ Feet or Open Hole Interval _____ to _____ Feet

UNDER PENALTY OF PERJURY I HEREBY ATTEST THAT THE INFORMATION CONTAINED HEREIN IS TRUE AND CORRECT TO THE BEST OF MY KNOWLEDGE

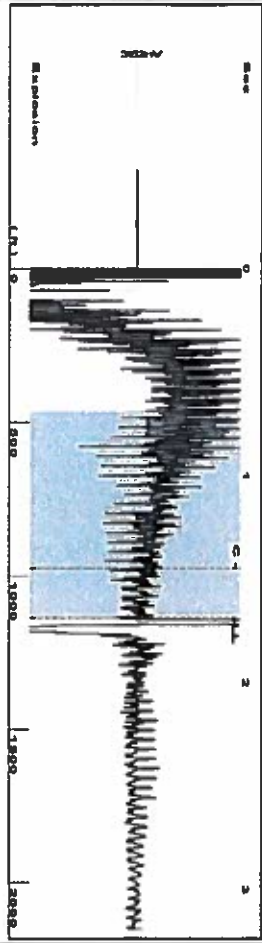
Submitted Electronically

Do NOT Write in This Space - KCC USE ONLY	Date Tested: _____	Results: _____	Date Plugged: _____	Date Repaired: _____	Date Put Back in Service: _____
	Review Completed by: _____ Comments: _____				
TA Approved: <input type="checkbox"/> Yes <input type="checkbox"/> Denied Date: _____					

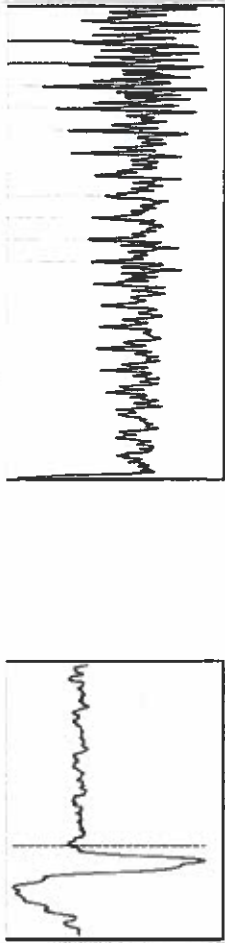
Mail to the Appropriate KCC Conservation Office:

	KCC District Office #1 - 210 E. Frontview, Suite A, Dodge City, KS 67801	Phone 620.225.8888
	KCC District Office #2 / UPGS - 3450 N. Rock Road, Building 600, Suite 601, Wichita, KS 67226	Phone 316.630.4000
	KCC District Office #3 - 1500 SW Seventh Steet, Chanute, KS 66720	Phone 620.432.2300
	KCC District Office #4 - 2301 E. 13th Street, Hays, KS 67601-2651	Phone 785.625.0550

Group: Fish Creek Well: Bahamaier 42-16 (acquired on: 03/10/16 13:48:34)



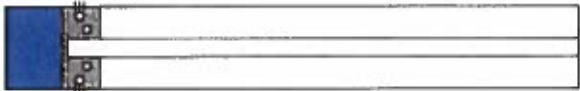
Filter Type High Pass Automatic Collar Count Yes Time 1.688 sec
 Manual Acoustic Velocity 360.52 ft/s Manual JTS/sec 21.4592 Joints 35.8844 Jts
 [0.7 to 1.7 (Sec)] Depth 1137.53 ft



Analysis Method: Automatic

Group: Fish Creek Well: Bahamaier 42-16 (acquired on: 03/10/16 13:48:34)

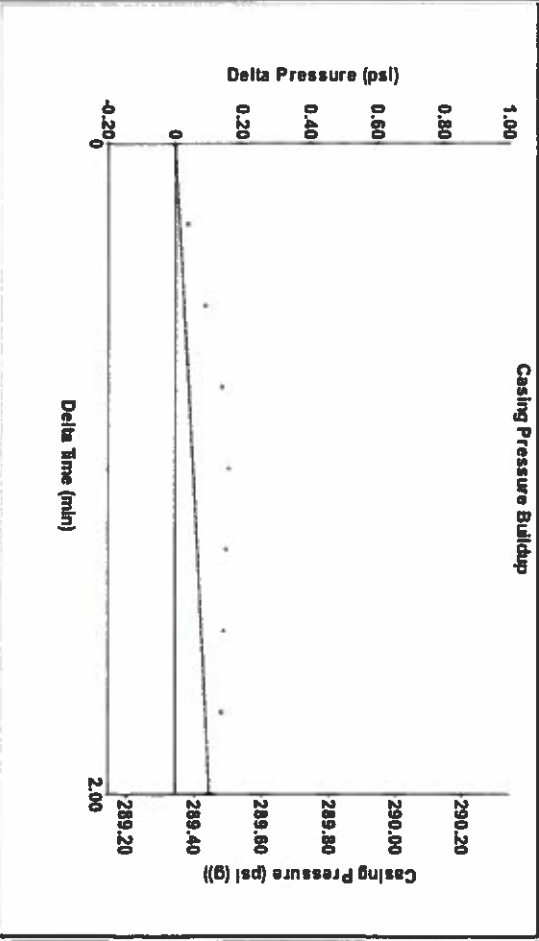
Production Current	Potential	Casing Pressure	Producing
Oil - - -	BBL/D	289.3 psi (g)	Annular Gas Flow
Water - - -	Msc/D	0.1 psi	% Liquid
Gas - - -		2.00 min	100 %
IPR Method	Vogel	Gas/Liquid Interface Pressure	
PBHP/SBHP	- - -	297.1 psi (g)	
Production Efficiency	0.0		
		Liquid Level Depth	
Oil 40 deg API		1137.53 ft	
Water 1.05 Sp.Gr:H2O		Pump Intake Depth	
Gas 0.64 Sp.Gr:AIR		1239.43 ft	
Acoustic Velocity	1347.79 ft/s	Formation Depth	
		1206.00 ft	



Formation Submergence
 Total Gaseous Liquid Column HT (TVD) 102 ft
 Equivalent Gas Free Liquid HT (TVD) 102 ft
 First slot

Pump Intake 330.7 psi (g)
 Producing BHP 319.7 psi (g)
 Static BHP 290.0 psi (g)

Group: Fish Creek Well: Bahamaier 42-16 (acquired on: 03/10/16 13:48:34)



Change in Pressure 0.10 psi
 Change in Time 2.00 min
 PT 9098
 Range 0 - ? psi

Group: Fish Creek Well: Bahamaier 42-16 (acquired on: 03/10/16 13:48:34)



Acoustic Velocity 1347.79 ft/s
 Joints Per Second 21.2585 Jts/sec
 Depth to liquid level 1137.53 ft
 Automatic Collar Count Yes

Joints counted 25
 Joints to liquid level 35.8844
 Filter Width 19.4592
 Time to 1st Collar 0.272

Conservation Division
District Office No. 4
2301 E. 13th Street
Hays, KS 67601-2651



Phone: 785-625-0550
Fax: 785-625-0564
<http://kcc.ks.gov/>

Jay Scott Emler, Chairman
Shari Feist Albrecht, Commissioner
Pat Apple, Commissioner

Sam Brownback, Governor

March 24, 2016

CHERYL GALLAGHER
Caerus Washco LLC
600 17TH STREET
SUITE 1600N
DENVER, CO 80202

Re: Temporary Abandonment
API 15-023-20892-00-00
BAHN-MAIER 42-16
NE/4 Sec.16-03S-40W
Cheyenne County, Kansas

Dear CHERYL GALLAGHER:

"Your temporary abandonment (TA) application for the well listed above has been approved. In accordance with K.A.R. 82-3-111 the TA status of this well will expire 03/24/2017.

- * If you return this well to service or plug it, please notify the District Office.
- * If you sell this well you are required to file a Transfer of Operator form, T-1.
- * If the well will remain temporarily abandoned, you must submit a new TA application, CP-111, before 03/24/2017.

You may contact me at the number above if you have questions.

Very truly yours,

RICHARD WILLIAMS"