



# TEMPORARY ABANDONMENT WELL APPLICATION

OPERATOR: License# \_\_\_\_\_  
 Name: \_\_\_\_\_  
 Address 1: \_\_\_\_\_  
 Address 2: \_\_\_\_\_  
 City: \_\_\_\_\_ State: \_\_\_\_\_ Zip: \_\_\_\_\_ + \_\_\_\_\_  
 Contact Person: \_\_\_\_\_  
 Phone: ( \_\_\_\_\_ ) \_\_\_\_\_  
 Contact Person Email: \_\_\_\_\_  
 Field Contact Person: \_\_\_\_\_  
 Field Contact Person Phone: ( \_\_\_\_\_ ) \_\_\_\_\_

API No. 15- \_\_\_\_\_  
 Spot Description: \_\_\_\_\_  
 \_\_\_\_\_ - \_\_\_\_\_ - \_\_\_\_\_ - \_\_\_\_\_ Sec. \_\_\_\_\_ Twp. \_\_\_\_\_ S. R. \_\_\_\_\_  E  W  
 \_\_\_\_\_ feet from  N /  S Line of Section  
 \_\_\_\_\_ feet from  E /  W Line of Section  
 GPS Location: Lat: \_\_\_\_\_, Long: \_\_\_\_\_  
(e.g. xx.xxxxx) (e.g. -xxx.xxxxx)  
 Datum:  NAD27  NAD83  WGS84  
 County: \_\_\_\_\_ Elevation: \_\_\_\_\_  GL  KB  
 Lease Name: \_\_\_\_\_ Well #: \_\_\_\_\_  
 Well Type: (check one)  Oil  Gas  OG  WSW  Other: \_\_\_\_\_  
 SWD Permit #: \_\_\_\_\_  ENHR Permit #: \_\_\_\_\_  
 Gas Storage Permit #: \_\_\_\_\_  
 Spud Date: \_\_\_\_\_ Date Shut-In: \_\_\_\_\_

	Conductor	Surface	Production	Intermediate	Liner	Tubing
Size						
Setting Depth						
Amount of Cement						
Top of Cement						
Bottom of Cement						

Casing Fluid Level from Surface: \_\_\_\_\_ How Determined? \_\_\_\_\_ Date: \_\_\_\_\_

Casing Squeeze(s): \_\_\_\_\_ to \_\_\_\_\_ w / \_\_\_\_\_ sacks of cement, \_\_\_\_\_ to \_\_\_\_\_ w / \_\_\_\_\_ sacks of cement. Date: \_\_\_\_\_  
(top) (bottom) (top) (bottom)

Do you have a valid Oil & Gas Lease?  Yes  No

Depth and Type:  Junk in Hole at \_\_\_\_\_  Tools in Hole at \_\_\_\_\_ Casing Leaks:  Yes  No Depth of casing leak(s): \_\_\_\_\_  
(depth) (depth)

Type Completion:  ALT. I  ALT. II Depth of:  DV Tool: \_\_\_\_\_ w / \_\_\_\_\_ sacks of cement  Port Collar: \_\_\_\_\_ w / \_\_\_\_\_ sack of cement  
(depth) (depth)

Packer Type: \_\_\_\_\_ Size: \_\_\_\_\_ Inch Set at: \_\_\_\_\_ Feet

Total Depth: \_\_\_\_\_ Plug Back Depth: \_\_\_\_\_ Plug Back Method: \_\_\_\_\_

**Geological Data:**

Formation Name	Formation Top	Formation Base	Completion Information
1. _____	At: _____	to _____ Feet	Perforation Interval _____ to _____ Feet or Open Hole Interval _____ to _____ Feet
2. _____	At: _____	to _____ Feet	Perforation Interval _____ to _____ Feet or Open Hole Interval _____ to _____ Feet

~~UNDER PENALTY OF PERJURY I HEREBY ATTEST THAT THE INFORMATION CONTAINED HEREIN IS TRUE AND CORRECT TO THE BEST OF MY KNOWLEDGE~~

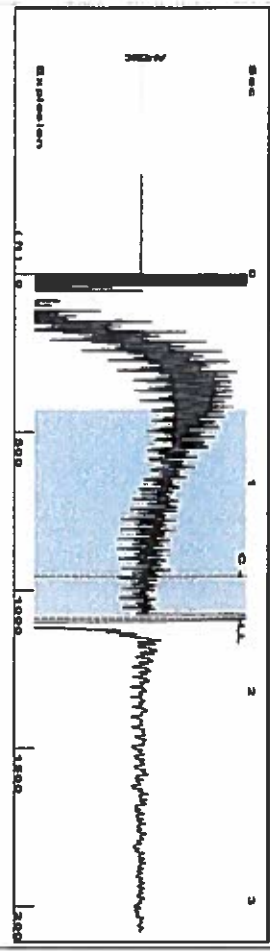
Submitted Electronically

<b>Do NOT Write in This Space - KCC USE ONLY</b>	Date Tested: _____	Results: _____	Date Plugged: _____	Date Repaired: _____	Date Put Back in Service: _____
	Review Completed by: _____ Comments: _____				
TA Approved: <input type="checkbox"/> Yes <input type="checkbox"/> Denied Date: _____					

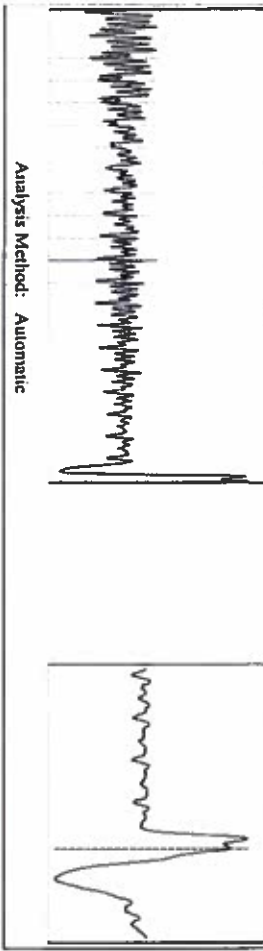
**Mail to the Appropriate KCC Conservation Office:**

	KCC District Office #1 - 210 E. Frontview, Suite A, Dodge City, KS 67801	Phone 620.225.8888
	KCC District Office #2 / UPGS - 3450 N. Rock Road, Building 600, Suite 601, Wichita, KS 67226	Phone 316.630.4000
	KCC District Office #3 - 1500 SW Seventh Steet, Chanute, KS 66720	Phone 620.432.2300
	KCC District Office #4 - 2301 E. 13th Street, Hays, KS 67601-2651	Phone 785.625.0550

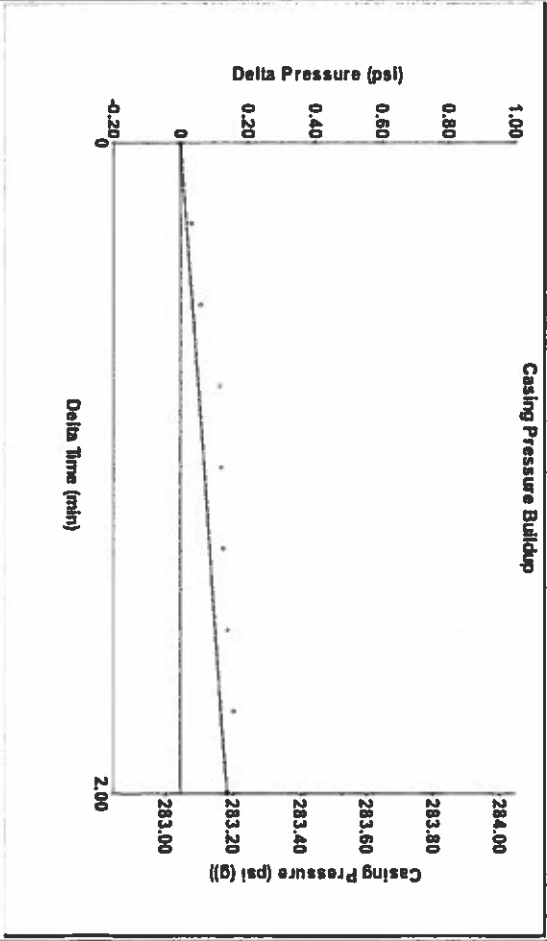
Group: Fish Creek Well: Sharp 33-10 (acquired on: 03/10/16 13:00:49)



Filter Type: High Pass  
 Manual Acoustic Velocity: 1329.14 ft/s  
 Automatic Collar Count: Yes  
 Manual JTS/sec: 20.9644  
 Time: 1.648 sec  
 Joints: 34.3333 Jts  
 Depth: 1088.37 ft



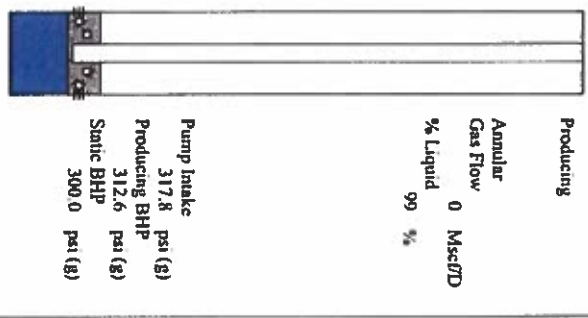
Group: Fish Creek Well: Sharp 33-10 (acquired on: 03/10/16 13:00:49)



Change in Pressure: 0.14 psi  
 Change in Time: 2.00 min  
 PT 9098 Range  
 0 - ? psi

Group: Fish Creek Well: Sharp 33-10 (acquired on: 03/10/16 13:00:49)

Production Current	Potential	Casing Pressure	Producing
Oil - * -	BBL/D	283.0 psi (g)	Annular Gas Flow
Water 0	BBL/D	Casing Pressure Buildup	0 MscFD
Gas 100.0	MscFD	0.1 psi	% Liquid
IPR Method	Vogel	2.00 min	99 %
PBH/PS/BHP	0.0	Gas/Liquid Interface Pressure	
Production Efficiency		290.6 psi (g)	
Oil 40 deg API	Liquid Level Depth		
Water 1.05 Sp.Gr: H2O	1088.37 ft		
Gas 0.66 Sp.Gr: AIR	Pump Intake Depth		
Acoustic Velocity	1171.58 ft		
	Formation Depth		
	1320.83 ft/s		
	1156.00 ft		



Group: Fish Creek Well: Sharp 33-10 (acquired on: 03/10/16 13:00:49)



Acoustic Velocity	1320.83 ft/s	Joints counted	25
Joints Per Second	20.8333 Jts/sec	Joints to liquid level	34.3333
Depth to liquid level	1088.37 ft	Filter Width	18.9644
Automatic Collar Count	Yes	Time to 1st Collar	0.248
			22.9644
			1.448

Conservation Division  
District Office No. 4  
2301 E. 13th Street  
Hays, KS 67601-2651



Phone: 785-625-0550  
Fax: 785-625-0564  
<http://kcc.ks.gov/>

Jay Scott Emler, Chairman  
Shari Feist Albrecht, Commissioner  
Pat Apple, Commissioner

Sam Brownback, Governor

March 24, 2016

CHERYL GALLAGHER  
Caerus Washco LLC  
600 17TH STREET  
SUITE 1600N  
DENVER, CO 80202

Re: Temporary Abandonment  
API 15-023-20878-00-00  
SHARP 33-10  
SE/4 Sec.10-03S-40W  
Cheyenne County, Kansas

Dear CHERYL GALLAGHER:

"Your temporary abandonment (TA) application for the well listed above has been approved. In accordance with K.A.R. 82-3-111 the TA status of this well will expire 03/24/2017.

- \* If you return this well to service or plug it, please notify the District Office.
- \* If you sell this well you are required to file a Transfer of Operator form, T-1.
- \* If the well will remain temporarily abandoned, you must submit a new TA application, CP-111, before 03/24/2017.

You may contact me at the number above if you have questions.

Very truly yours,

RICHARD WILLIAMS"