



TEMPORARY ABANDONMENT WELL APPLICATION

OPERATOR: License# _____
 Name: _____
 Address 1: _____
 Address 2: _____
 City: _____ State: _____ Zip: _____ + _____
 Contact Person: _____
 Phone: (_____) _____
 Contact Person Email: _____
 Field Contact Person: _____
 Field Contact Person Phone: (_____) _____

API No. 15- _____
 Spot Description: _____
 _____ - _____ - _____ - _____ Sec. _____ Twp. _____ S. R. _____ E W
 _____ feet from N / S Line of Section
 _____ feet from E / W Line of Section
 GPS Location: Lat: _____, Long: _____
(e.g. xx.xxxxx) (e.g. -xxx.xxxxx)
 Datum: NAD27 NAD83 WGS84
 County: _____ Elevation: _____ GL KB
 Lease Name: _____ Well #: _____
 Well Type: (check one) Oil Gas OG WSW Other: _____
 SWD Permit #: _____ ENHR Permit #: _____
 Gas Storage Permit #: _____
 Spud Date: _____ Date Shut-In: _____

	Conductor	Surface	Production	Intermediate	Liner	Tubing
Size						
Setting Depth						
Amount of Cement						
Top of Cement						
Bottom of Cement						

Casing Fluid Level from Surface: _____ How Determined? _____ Date: _____
 Casing Squeeze(s): _____ to _____ w / _____ sacks of cement, _____ to _____ w / _____ sacks of cement. Date: _____
(top) (bottom) (top) (bottom)
 Do you have a valid Oil & Gas Lease? Yes No
 Depth and Type: Junk in Hole at _____ Tools in Hole at _____ Casing Leaks: Yes No Depth of casing leak(s): _____
(depth) (depth)
 Type Completion: ALT. I ALT. II Depth of: DV Tool: _____ w / _____ sacks of cement Port Collar: _____ w / _____ sack of cement
(depth) (depth)
 Packer Type: _____ Size: _____ Inch Set at: _____ Feet
 Total Depth: _____ Plug Back Depth: _____ Plug Back Method: _____

Geological Data:

Formation Name	Formation Top	Formation Base	Completion Information
1. _____	At: _____	to _____ Feet	Perforation Interval _____ to _____ Feet or Open Hole Interval _____ to _____ Feet
2. _____	At: _____	to _____ Feet	Perforation Interval _____ to _____ Feet or Open Hole Interval _____ to _____ Feet

UNDER PENALTY OF PERJURY I HEREBY ATTEST THAT THE INFORMATION CONTAINED HEREIN IS TRUE AND CORRECT TO THE BEST OF MY KNOWLEDGE

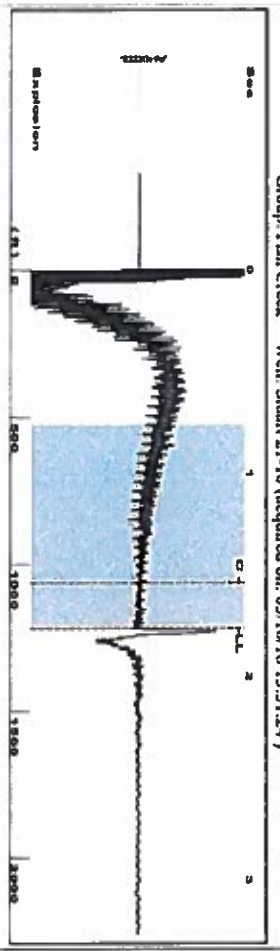
Submitted Electronically

Do NOT Write in This Space - KCC USE ONLY	Date Tested: _____	Results: _____	Date Plugged: _____	Date Repaired: _____	Date Put Back in Service: _____
	Review Completed by: _____ Comments: _____				
TA Approved: <input type="checkbox"/> Yes <input type="checkbox"/> Denied Date: _____					

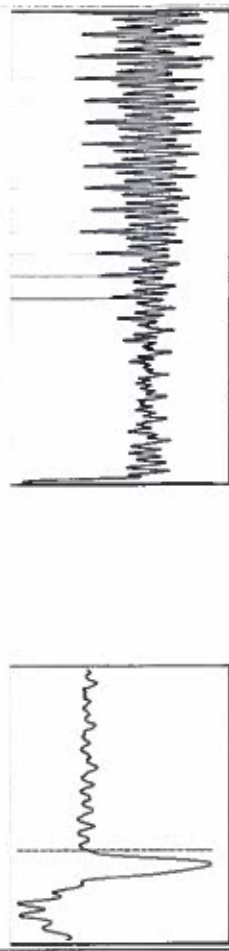
Mail to the Appropriate KCC Conservation Office:

	KCC District Office #1 - 210 E. Frontview, Suite A, Dodge City, KS 67801	Phone 620.225.8888
	KCC District Office #2 / UPGS - 3450 N. Rock Road, Building 600, Suite 601, Wichita, KS 67226	Phone 316.630.4000
	KCC District Office #3 - 1500 SW Seventh Steet, Chanute, KS 66720	Phone 620.432.2300
	KCC District Office #4 - 2301 E. 13th Street, Hays, KS 67601-2651	Phone 785.625.0550

Group: Fish Creek Well: Stuart 21-10 (acquired on: 03/10/16 13:31:24)



Filter Type: High Pass
Manual Acoustic Veloc: 1360.52 ft/s
Automatic Collar Count: Yes
Manual JTS/sec: 21.4592
Time: 1.762 sec
Joints: 38.4237 Jts
Depth: 1218.03 ft



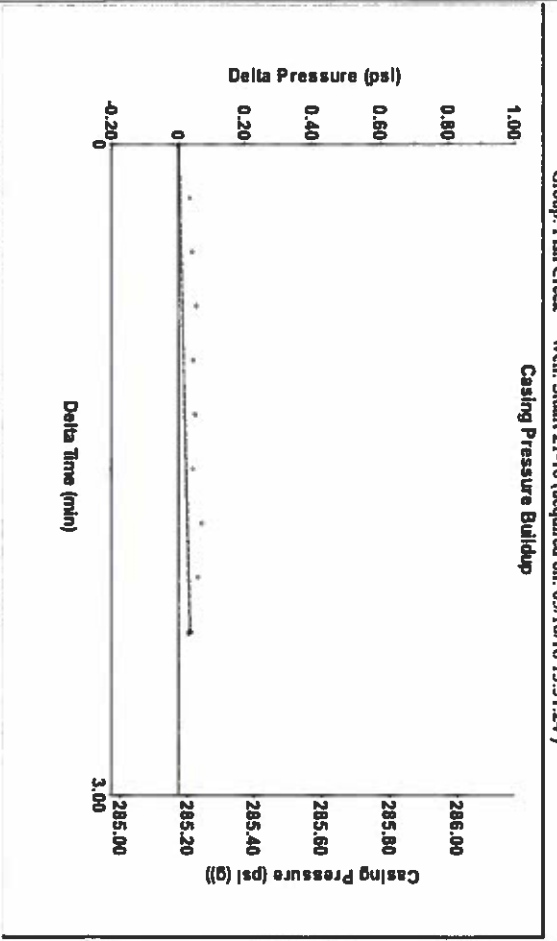
Analysis Method: Automatic

Group: Fish Creek Well: Stuart 21-10 (acquired on: 03/10/16 13:31:24)

Production	Potential	Casing Pressure	Producing
Current	BB/LD	285.2 psi (g)	Annular
Oil	BB/LD	Casing Pressure Buildup	Gas Flow
Water	Msc/D	0.0 psi	% Liquid
Gas	Msc/D	2.25 min	%
IPR Method	Vogel	Gas/Liquid Interface Pressure	
PBHP/SBHP	0.0	293.0 psi (g)	
Production Efficiency		Liquid Level Depth	
		1218.03 ft	
Oil	40 deg API	Pump Intake Depth	
Water	1.05 Sp.Gr./H ₂ O	1267.93 ft	
Gas	0.62 Sp.Gr./AIR	Formation Depth	
		1254.00 ft	
Acoustic Velocity	1382.55 ft/s		



Group: Fish Creek Well: Stuart 21-10 (acquired on: 03/10/16 13:31:24)



Change in Pressure: 0.04 psi
Change in Time: 2.25 min
PT 9098
Range: 0 - 1 psi

Group: Fish Creek Well: Stuart 21-10 (acquired on: 03/10/16 13:31:24)



Acoustic Velocity	1382.55 ft/s	Joints counted	28
Joints Per Second	21.8069 Jts/sec	Joints to liquid level	38.4237
Depth to liquid level	1218.03 ft	Filter Width	19.4592
Automatic Collar Count	Yes	Time to 1st Collar	0.256

Conservation Division
District Office No. 4
2301 E. 13th Street
Hays, KS 67601-2651



Phone: 785-625-0550
Fax: 785-625-0564
<http://kcc.ks.gov/>

Jay Scott Emler, Chairman
Shari Feist Albrecht, Commissioner
Pat Apple, Commissioner

Sam Brownback, Governor

March 24, 2016

CHERYL GALLAGHER
Caerus Washco LLC
600 17TH STREET
SUITE 1600N
DENVER, CO 80202

Re: Temporary Abandonment
API 15-023-20874-00-00
STUART 21-10
NW/4 Sec.10-03S-40W
Cheyenne County, Kansas

Dear CHERYL GALLAGHER:

"Your temporary abandonment (TA) application for the well listed above has been approved. In accordance with K.A.R. 82-3-111 the TA status of this well will expire 03/24/2017.

- * If you return this well to service or plug it, please notify the District Office.
- * If you sell this well you are required to file a Transfer of Operator form, T-1.
- * If the well will remain temporarily abandoned, you must submit a new TA application, CP-111, before 03/24/2017.

You may contact me at the number above if you have questions.

Very truly yours,

RICHARD WILLIAMS"