



TEMPORARY ABANDONMENT WELL APPLICATION

All blanks must be complete

OPERATOR: License# _____
 Name: _____
 Address 1: _____
 Address 2: _____
 City: _____ State: _____ Zip: _____ + _____
 Contact Person: _____
 Phone: (_____) _____
 Contact Person Email: _____
 Field Contact Person: _____
 Field Contact Person Phone: (_____) _____

API No. 15- _____
 Spot Description: _____
 _____ - _____ - _____ - _____ Sec. _____ Twp. _____ S. R. _____ E W
 _____ feet from N / S Line of Section
 _____ feet from E / W Line of Section
 GPS Location: Lat: _____, Long: _____
(e.g. xx.xxxxx) (e.g. -xxx.xxxxx)
 Datum: NAD27 NAD83 WGS84
 County: _____ Elevation: _____ GL KB
 Lease Name: _____ Well #: _____
 Well Type: (check one) Oil Gas OG WSW Other: _____
 SWD Permit #: _____ ENHR Permit #: _____
 Gas Storage Permit #: _____
 Spud Date: _____ Date Shut-In: _____

	Conductor	Surface	Production	Intermediate	Liner	Tubing
Size						
Setting Depth						
Amount of Cement						
Top of Cement						
Bottom of Cement						

Casing Fluid Level from Surface: _____ How Determined? _____ Date: _____
 Casing Squeeze(s): _____ to _____ w / _____ sacks of cement, _____ to _____ w / _____ sacks of cement. Date: _____
(top) (bottom) (top) (bottom)
 Do you have a valid Oil & Gas Lease? Yes No
 Depth and Type: Junk in Hole at _____ Tools in Hole at _____ Casing Leaks: Yes No Depth of casing leak(s): _____
(depth) (depth)
 Type Completion: ALT. I ALT. II Depth of: DV Tool: _____ w / _____ sacks of cement Port Collar: _____ w / _____ sack of cement
(depth) (depth)
 Packer Type: _____ Size: _____ Inch Set at: _____ Feet
 Total Depth: _____ Plug Back Depth: _____ Plug Back Method: _____

Geological Data:

Formation Name	Formation Top	Formation Base	Completion Information
1. _____	At: _____ to _____ Feet	Perforation Interval _____ to _____ Feet or Open Hole Interval _____ to _____ Feet	
2. _____	At: _____ to _____ Feet	Perforation Interval _____ to _____ Feet or Open Hole Interval _____ to _____ Feet	

UNDER PENALTY OF PERJURY I HEREBY ATTEST THAT THE INFORMATION CONTAINED HEREIN IS TRUE AND CORRECT TO THE BEST OF MY KNOWLEDGE

Submitted Electronically

Do NOT Write in This Space - KCC USE ONLY	Date Tested: _____	Results: _____	Date Plugged: _____	Date Repaired: _____	Date Put Back in Service: _____
	Review Completed by: _____ Comments: _____				
TA Approved: <input type="checkbox"/> Yes <input type="checkbox"/> Denied Date: _____					

Mail to the Appropriate KCC Conservation Office:

	KCC District Office #1 - 210 E. Frontview, Suite A, Dodge City, KS 67801	Phone 620.225.8888
	KCC District Office #2 / UPGS - 3450 N. Rock Road, Building 600, Suite 601, Wichita, KS 67226	Phone 316.630.4000
	KCC District Office #3 - 1500 SW Seventh Steet, Chanute, KS 66720	Phone 620.432.2300
	KCC District Office #4 - 2301 E. 13th Street, Hays, KS 67601-2651	Phone 785.625.0550



Jay Scott Emler, Chair
Shari Feist Albrecht, Commissioner
Pat Apple, Commissioner

Corporation Commission

Sam Brownback, Governor

NOTICE OF VIOLATION

ARLENE VALLIQUETTE
MERIT ENERGY COMPANY, LLC
13727 NOEL RD STE 1200
DALLAS TX 75240

March 24, 2016
KCC Lic.-32446

RE: API Well No. 15-055-21314-00-01
GARDEN CITY L 5
34-23S-34W, SWSWNE
FINNEY County, Kansas

Dear Operator:

During a lease inspection conducted on March 08, 2016, on the above-referenced well, a KCC representative documented the following probable regulatory violation:

K.A.R. 82-3-111, Temporary Abandonment; penalty; plugging.

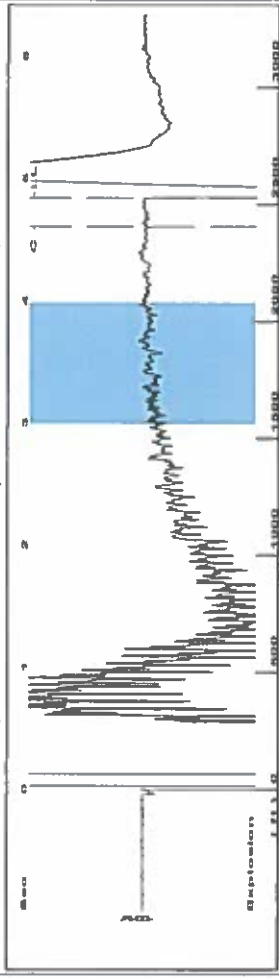
Within 90 days after operations cease on a well, the operator must either return the well to service, plug the well, or obtain approval for temporary abandonment status from the District Office.

If you do not correct this violation and contact me by APRIL 14, 2016, I will refer this matter to our legal department with a recommendation that the Commission take formal enforcement action including a monetary penalty for the violation and an order for you to plug the well.

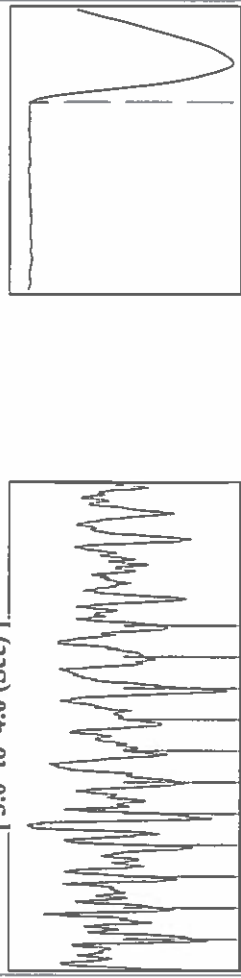
Sincerely,

KEN JEHLIK
KCC District # 1

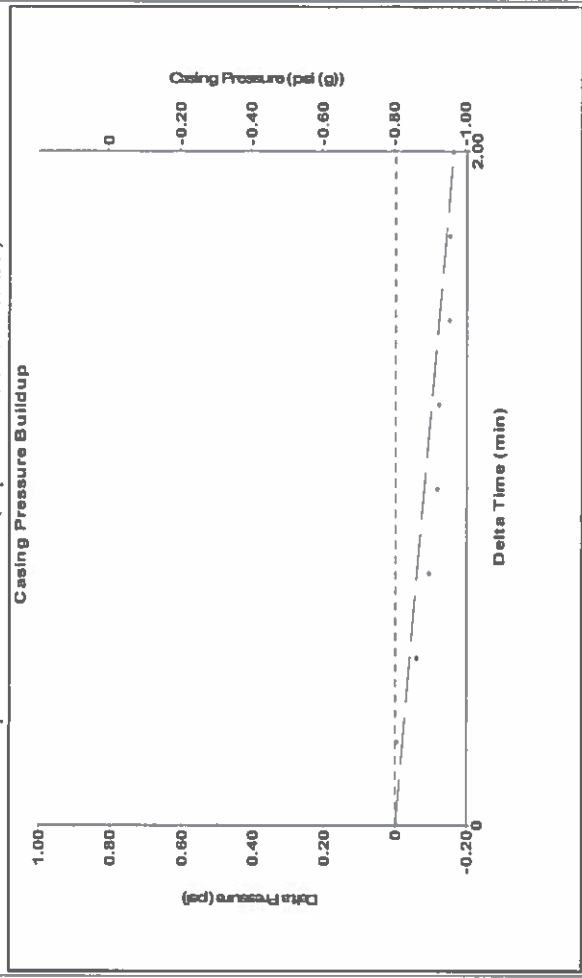
Group: TAD Well: GC L-5 (acquired on: 03/30/16 08:49:36)



Filter Type High Pass Automatic Collar Count Yes
 Manual Acoustic Velocity 984.472 ft/s Manual JTS/sec 15.528
 Time 4.837 sec
 Joints 79.6445 Jts
 Depth 2524.73 ft



Group: TAD Well: GC L-5 (acquired on: 03/30/16 08:49:36)



Change in Pressure -0.16 psi PT9522 Range
 Change in Time 2.00 min

Analysis Method: Automatic

Group: TAD Well: GC L-5 (acquired on: 03/30/16 08:49:36)

Production	Potential	Casing Pressure	Producing
Oil	- * - BBL/D	-0.8 psi (g)	Annular
Water	- * - BBL/D	-0.162 psi	Gas Flow
Gas	- * - Mscf/D	2.00 min	% Liquid
IPR Method	Vogel	Gas/Liquid Interface Pressure	100 %
PBHP/SBHP	- * - psi (g)	Liquid Level Depth	Pump Intake
Production Efficiency	0.0	2524.73 ft	Producing BHFP
Oil	40 deg-API	Pump Intake Depth	Static BHFP
Water	1.05 Sp.Gr.H2O	4461.00 ft	- * - psi (g)
Gas	0.93 Sp.Gr.AIR	Formation Depth	- * - psi (g)
Acoustic Velocity	1043.92 ft/s	4379.00 ft	- * - psi (g)
Formation Submergence	- * - ft		
Total Gaseous Liquid Column HIT (TVD)	- * - ft		
Equivalent Gas Free Liquid HIT (TVD)	- * - ft		
Acoustic Test			

Acoustic Velocity	1043.92 ft/s	Joints counted	71
Joints Per Second	16.4657 jts/sec	Joints to liquid level	79.6445
Depth to liquid level	2524.73 ft	Filter Width	13.528
Automatic Collar Count	Yes	Time to 1st Collar	0.292
			17.528
			4.604

Conservation Division
District Office No. 1
210 E. Frontview, Suite A
Dodge City, KS 67801



Phone: 620-225-8888
Fax: 620-225-8885
<http://kcc.ks.gov/>

Jay Scott Emler, Chairman
Shari Feist Albrecht, Commissioner
Pat Apple, Commissioner

Sam Brownback, Governor

April 03, 2016

Katherine McClurkan
Merit Energy Company, LLC
13727 Noel Road, Suite 1200
Dallas, TX 75240

Re: Temporary Abandonment
API 15-055-21314-00-01
GARDEN CITY L 5
NE/4 Sec.34-23S-34W
Finney County, Kansas

Dear Katherine McClurkan:

"Your temporary abandonment (TA) application for the well listed above has been approved. In accordance with K.A.R. 82-3-111 the TA status of this well will expire 04/03/2017.

- * If you return this well to service or plug it, please notify the District Office.
- * If you sell this well you are required to file a Transfer of Operator form, T-1.
- * If the well will remain temporarily abandoned, you must submit a new TA application, CP-111, before 04/03/2017.

You may contact me at the number above if you have questions.

Very truly yours,

Michele Pennington"