

L.D. DRILLING, INC.
SKOLAUT-MAULER LEASE
SW. 1/4, SECTION 14, T18S. R14W
BARTON COUNTY, KANSAS

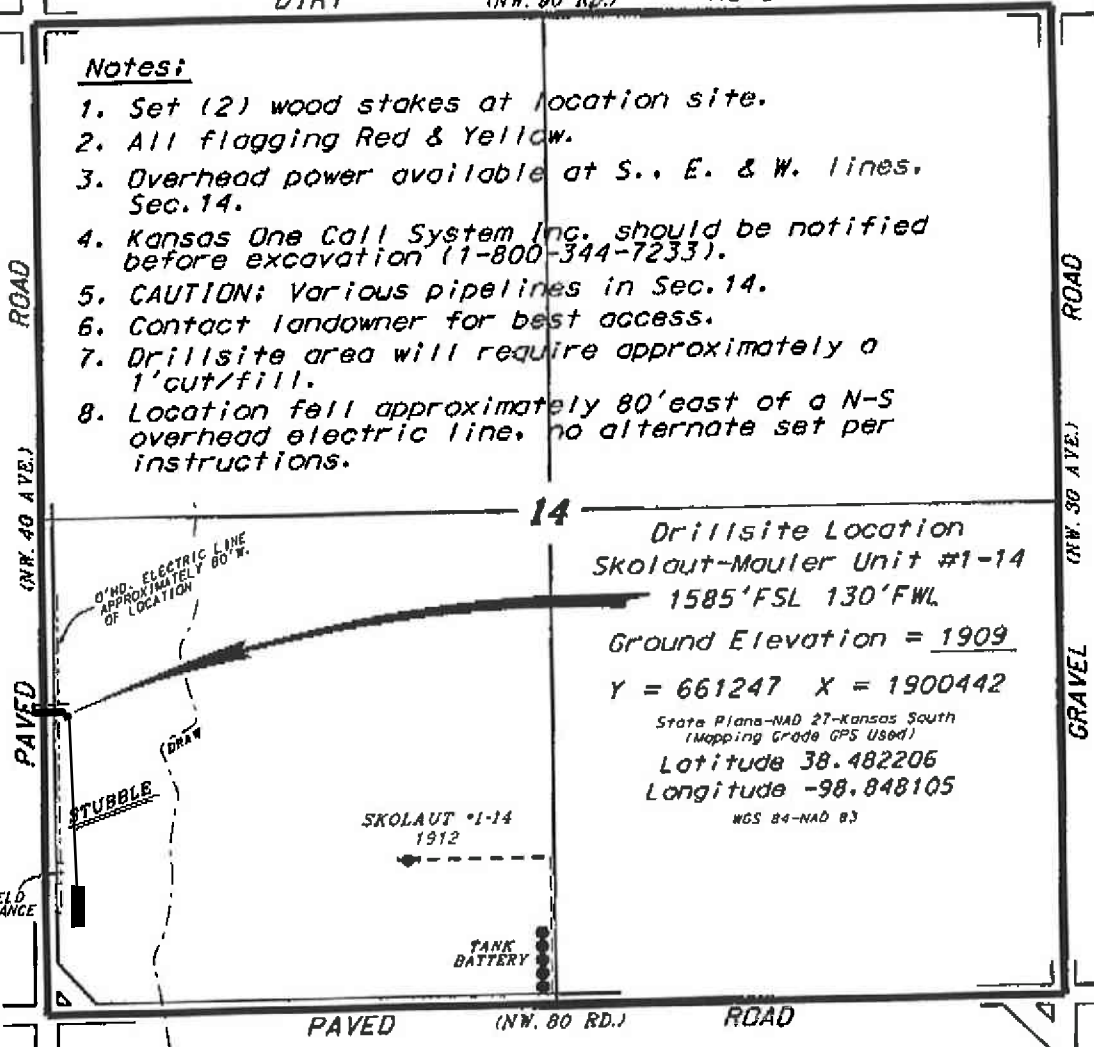
Directions:

From the intersection of Highway 281 and Highway 4 (1 mile north & 3 miles west of Hoisington, Ks.) go 4.0 miles South to the SW. corner of Section 14, then go 0.30 miles North to a flag on the east edge of road, then go 0.02 miles East to location.

DIRT (NW. 80 RD.) ROAD

Notes:

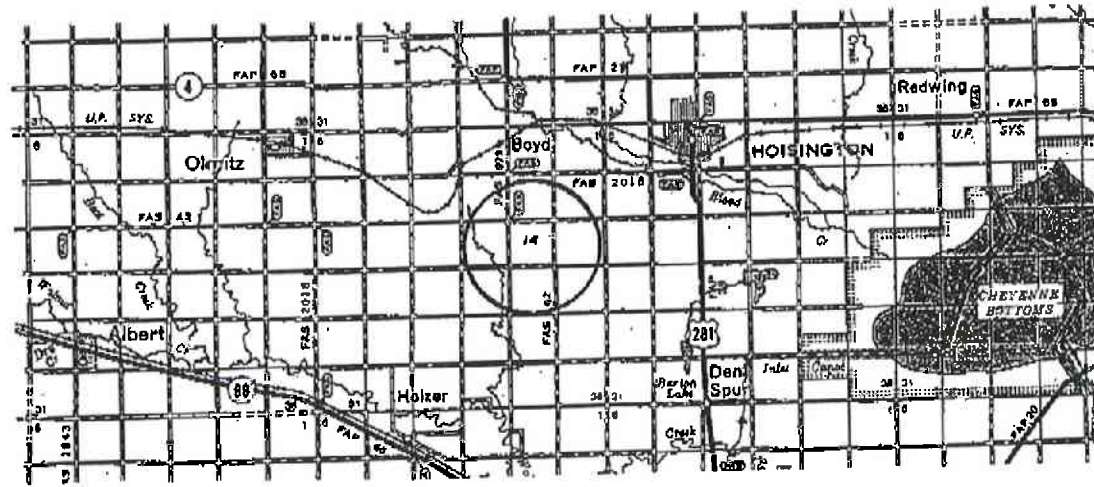
1. Set (2) wood stakes at location site.
2. All flagging Red & Yellow.
3. Overhead power available at S., E. & W. lines, Sec. 14.
4. Kansas One Call System Inc. should be notified before excavation (1-800-344-7233).
5. CAUTION; Various pipelines in Sec. 14.
6. Contact landowner for best access.
7. Drillsite area will require approximately a 1' cut/fill.
8. Location fell approximately 80' east of a N-S overhead electric line, no alternate set per instructions.



SCALE 1" = 1000'



*Ingress and egress to location as shown on this plot is per usage only and may not be legally opened for public use. Contact landowner, tenant and county road department for access.



* Controlling data is based upon the best maps and photographs available to us and upon a regular section of land containing 640 acres.
 * Approximate section lines were determined using the normal standards of care of oilfield surveyors practicing in the state of Kansas. The section corners, which establish the precise section lines, were not necessarily located, and the exact location of the drillsite location in the section is not guaranteed. Therefore, the operator, securing this service and accepting this plot and all other parties relying thereon agree to hold Central Kansas Oilfield Services, Inc., its officers and employees harmless from all losses, costs and expenses and hold entities released from any liability from incidental or consequential damages.
 * Elevations derived from National Geodetic Vertical Datum.

February 16, 2016