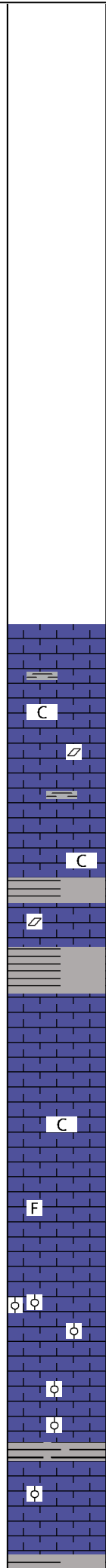
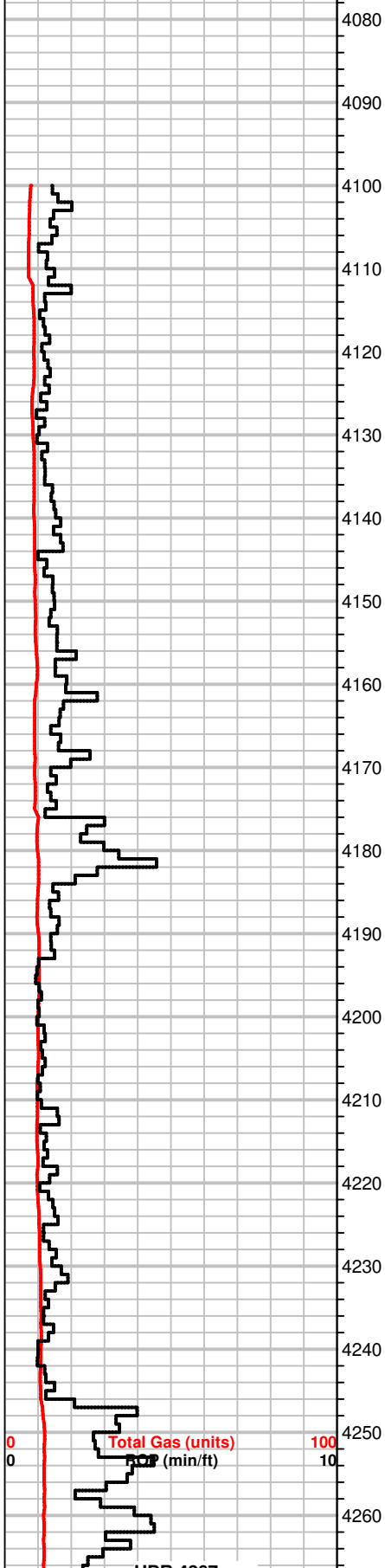


0 Total Gas (units) 100  
 0 ROP (min/ft) 10  
 Depth: 652.0  
 Bit #: 2  
 Size: 7.875  
 Type: Hughes  
 In: 652  
 Out: 5139  
 Drilled: 4487  
 Hours: 120  
 Cond:

Geo on Location @ 6:30 PM 11/15/2015  
 Correlation well 'A' - VOC Droste 2-10



Geologic Report:  
 Vincent Oil Corporation  
 Riegel # 2-3  
 100' FSL & 2634' FWL  
 3-28-23W  
 Ford Co., KS  
 GL: 2467  
 KB: 2480



MS, crm to brn, f-xln, dense, NS  
 SH, gray, red, some silty, samples still cleaning up

WS-MS, crm to off white, chalky, soft, some gray, f-xln, calcite xtals, SH, gray, greenish gray

MS-WS, crm to gray, f-xln, chalky, rare pcs w. coral frgmts, oolitic, fossilif.  
 some SH, gray, red

MS-WS, crm to gray, vf-xln to chalky, A.A., some hard, dense, calcite rhombs, some pcs friable, mic-xln, gritty txt, SH, sandy, gray, green, red

MS gray, crm to tan, A.A, scatt fossilif pcs, calcite rhombs, NS

MS, tan to gray, mic-xln, massive txt, dense, scatt crinoids, micro oolitic in part, some pcs chalky  
 SH, gray, silty

MS, lt. tan, crm off white, mic-xln, massive txt, dense, some fossils

MS, A.A., come calcite rhombs, sandy pcs, some micro oolitic  
 SH, green

MS-WS, crm to off white, mic-xln, micro oolitic, hard, friable, scatt fossils

MS-WS, A.A., rare mottled pcs  
 SH, blk, gray

MS, crm to gray, mottled, fossils, SH, brn, blk, gray, silty

Sh, blk, dk. gray, gassy blk pcs

SH, blk, dk. gray, gassy blk pcs

(-1787) (A+6)

4270

MS-WS, crm, gray, tan, f-xln to mic-xln, mottled pcs, fossils

4280

MS, crm to tan, brn, blk, specs, mic-xln, dense, calcite rhombs, micro oolitic

4290

SH, blk, grays  
MS, crm to tan, f-xln, dense, scatt fossils, pyrite, Chert, white

4300

MS, crm to lt. tan, f-xln, dense to chalky, some pcs fossilif, calcite, rare dark specs  
some SH, gray, green

4310

MS, crm to lt. tan, m-xln, sub oolitic in part  
Chert, white, rare gray

4320

MS-WS, crm to tan, some gray, f-xln, dense, some friable, fossilif, rare white Chert, SH, grays

4330

MS, crm, f-xln, massive txt, some pcs micro oolitic, scatt fossilif pcs, soft to hrad, scatt SH, grays

4340

WS, brn to gray, f-xln, f to m-gr oolitic, dark ooids in tite matrix, some MS, A.A., glauc, pyrite.  
SH, gray green, red

4350

MS, crm, f-xln, massive to gritty txt, some pcs friable, rare dead wormy stn, SH, green

4360

MS, A.A., sub oolitic, mineral specs.

4370

MS-WS, crm to gray, f-xln, sub oolitic, mineral specs, fossilif, hard, scatt chalky pcs

4380

SH, gray, red, brn, some silty  
MS-WS, A.A., f-gr oolitic throughout,

4390

MS-WS, A.A., f-gr oolitic pcs, mineral specs  
SH, gray, red, brn

4400

MS, brn, f-xln, to massive txt, dense, some fossil frgmts,  
SH, brn, gray

BL 4402 (-1922)(A+7)

4410

MS-WS, crm to lt. gray, f-xln, hard, gritty to sub oolitic txt, some lt gray pcs dense, NS

LANS 4411 (-1934)(A+9)

4420

MS-WS, A.A., crm to lt. gray, f-xln, hard, fossilif, m-gr oolitic pcs, some sub oolitic, dark ooids

4430

MS-WS, tan, gray, crm, f-xln, sub oolitic, dense, scatt fossils, some calcite, NS

4440

MS, crm, som elt. gray, f-xln some partially chalky, hard to firm, scatt fossils  
SH, gray,

4450

MS, crm A.A., dense, glauc, fossilif.

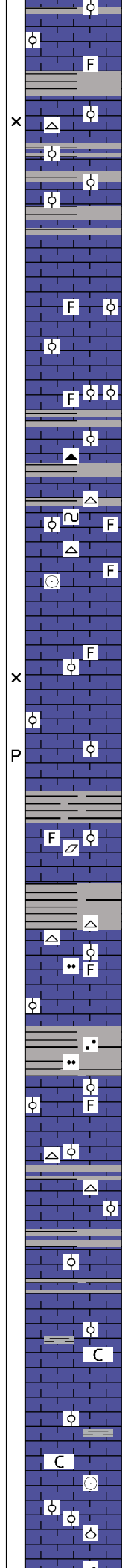
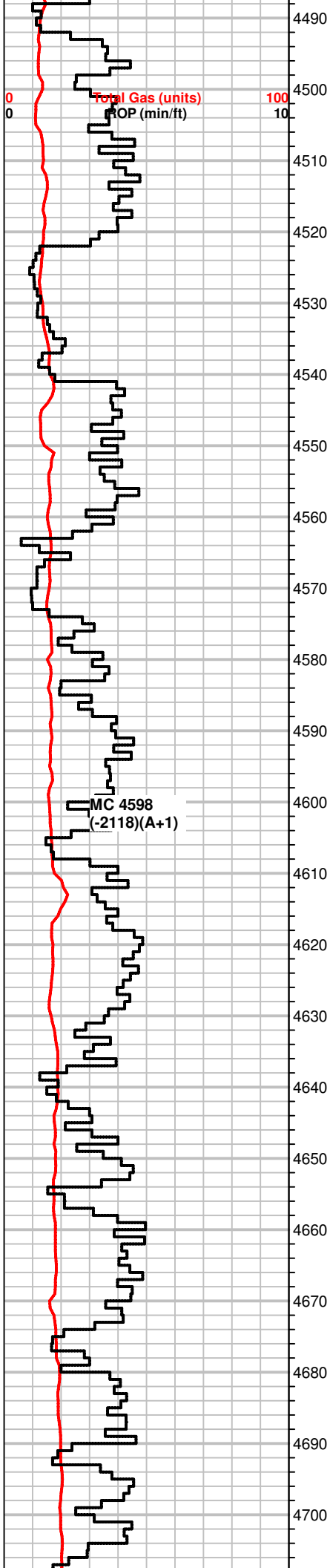
4460

MS, crm to lt. gray, f-xln, dense to friable, sub oolitic in part, rare pcs w/ dark ooids, m-gr, scatt fossils,  
SH, gray, green

4470

MS, A.A., mostly crm, crinoids, rare white Chert, NS

4480



MS, crm, vf-xln to f-xlnk, soft, some pcs dense, scatt fossils, rare sub oolitic pcs, inc in SH, red, some gray(looks like caving)

SH, grays, green, yellowish brn  
 MS, crm to tan, mic to f-xln, f to m-gr oolitic pcs, dark ooids, dense matrix, rare brn mottled pcs, rare Chert, white

MS, crm to gray, f-xln, hard, dense, fossilif, oolitic to sub-oolitic pcs, some gritty txt  
 SH, gray

some SH, gray  
 MS, crm to gray, some tan/brn pcs, f-xln gritty, scatt fossils,

WS-MS, gray to brn, crm, f-xln, mottled/sandy pcs, fossilif, f-gr oolitic pcs, dense to firm, NS

WS-MS, A.A., brn, crip -xln, dense, fossilif brn pcs, Chert, gray some SH, gray, brn

MS, crm, mic-xln, dense, sub oolitic, scatt glauc, lt. edge stn dry, Chert, white, fossilif.

MS-WS, A.A., crm to brn, f-xln, dense, scatt fossils, Chert, white, opaque, scatt fossils, lt. edge stn dry

MS, brn to crm, mic to f-xln, some mottled pcs, most dense, massive txt in pcs, some fossilif, NS

MS, crm to tan, some brn, dense, scatt pcs chalky, rare WS, crm, f-gr oolitic, fossilif., friable, NS

SH, gray, dk. gray, green  
 MS, crm to tan, some WS, f-xln, hard, fossilif, sub oolitic, scatt calcite xtals.

SH, gray, green  
 MS, tan, crm to gray, mic-xln, dense, some fossil frgmts, NS  
 Chert, white gray

MS, crm to tan, mic-xln, dense, hard, gritty txt in pcs, fossils  
 SH, green, gray

MS, crm to gray, f-xln, chalky, some dense, firm to hard, sub oolitic pcs

Rare SH, blk, gray, sandy silty  
 MS crm to gray, f-xln, firm, some gray pcs w/ dark co gr ooids, fossils, dull fluor, NS

MS, crm to off white, f-xln, barren, firm to hard, sub oolitic pcs, some chalky, Chert, white

MS, A.A, influx in gray to brn pcs, f-xln to chalky, sub oolitic, m-gr ooids in gray pcs, scatt crinoids, brach frgmts

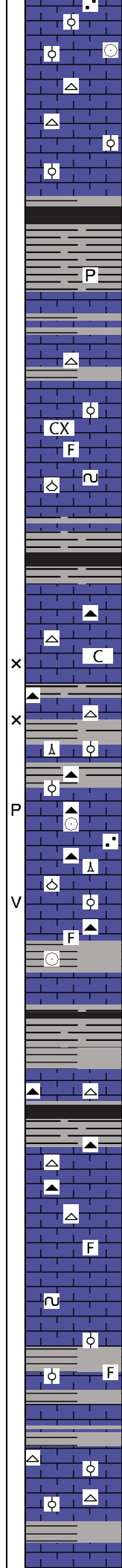
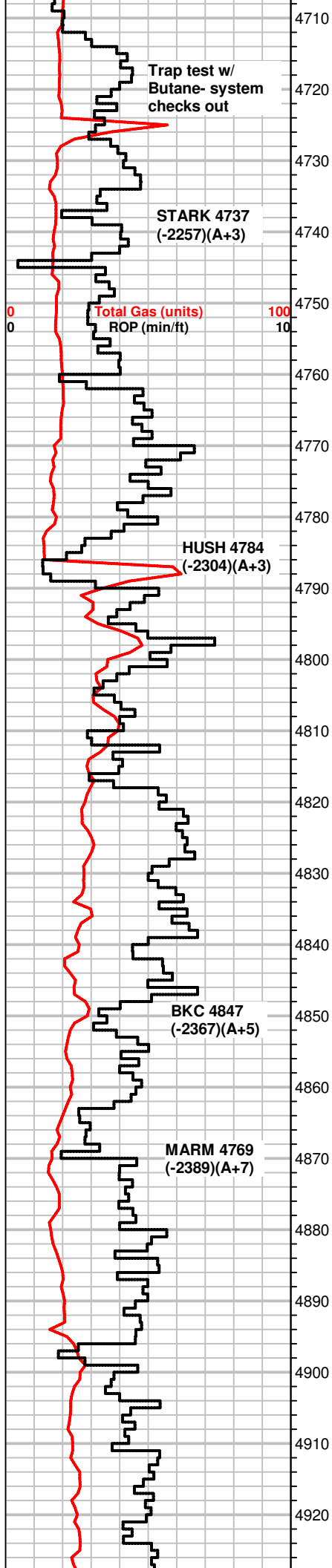
MS, lt. gray to crm, f-xln, dense to friable, some pcs w/ chalky matrix

MS, gray to crm, A.A, influx of SH, gray, (caving/washout?)

SH, A.A. rare blk, looks fresh(washout?), MS, crm, f-xln, some pcs w/ m-gr ooids in chalky matrix,

MS-WS, crm to tan, mic to f-xln, hard/dense, some sli. chalky, , sub oolitic to fossilif(crinoids, brach frgmts)

MS, crm to tan, f-xln, some pcs sandy, chalky, f-gr oolitic



MS, crm to tan, f-xln, some pcs sandy, chalky, m-gr oolitic, scatt SH, gray, green, red

MS, A.A., chalky to f-xln, hard, Chert, white

WS-MS, brn, tan, crm, f-xln, sandy, oolitic in part, f-gr, some pcs dense, mic-xln, SH, blk, brn, gray

SH, blk, carb, brn, gray, pyrite, green

MS, lt. gray, f-xln, firm to hard, massive txt, dull fluor, NS Chert, white, carrying SH, gray, blk dec. amt.

MS, lt. gray, tan, crm, f-xln, hard, most pcs dense, rare fossils scatt SH, gray

MS, crm to lt. gray, brn, A.A., some chalky, glauc, rare fossils, NS SH, blk

SH, blk, brn, gray, silty/sandy pcs

SH, A.A.  
MS, crm to tan, f-xln, chalky in crm pcs  
Chert, brn

MS, crm to tan, f-xln, dense, rare soft pcs-chalky in part, fossilif. calcite, mottled pcs, scatt SH, gray, blk  
Chert, brn, white

MS, brn to crm, f-xln to chalky, hard to soft, some sub oolitic Chert, brn, gray, spicules, lt edge stn dry  
SH, blk, gray

MS, crm, f-xln, calcite rhombs, silty, some cherty pcs, fossils (crinoids), Chert, brn, gray

MS-WS, crm, m-xln to f-xln, sandy pcs, fossilif, some pcs w/ elongated ooids, Chert, gray, fossilif.  
SH, gray, green, blk, blocky

MS, brn, to crm, f-xln, dense, massive txt in pcs, scatt fossils. carrying SH, blk, gray

SH, gray, green  
WS, crm to tan, brn, f-xln, fossilif, oolitic, dense in part, Chert frgmts, Chert, brn, blk, fossilif.

Sh, gray, dk. gray, WS-MS. A.A., Chert, blk, gray, white, fossilif.

MS-WS, crm to tan, some gray, f-xln, hard, sli chalky pcs, Chert, white, brn, spicules, NS

MS, lt. gray to crm, mic-xln, firm, scatt fossils, NS  
scatt SH, green, gray

MS, A.A., some mottled pcs, glauc inclusions, NS

MS-WS, crm to gray, f-xln, soft, rare dense pcs(gray) fossilif. suboolitic, lt edge stn dry  
SH, blk, gray

Scatt SH, gray, blk  
MS, crm to lt. gray, f-xln, sli. chky, sub oolitic, firm to hard, Chert, opaque

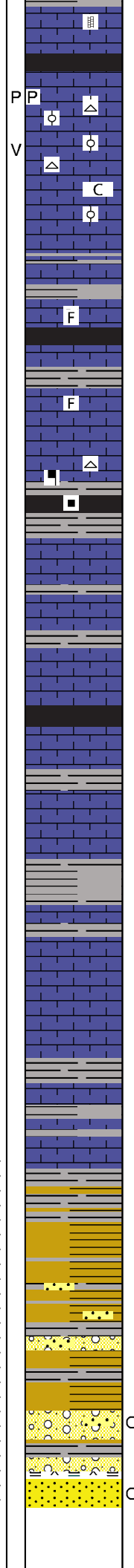
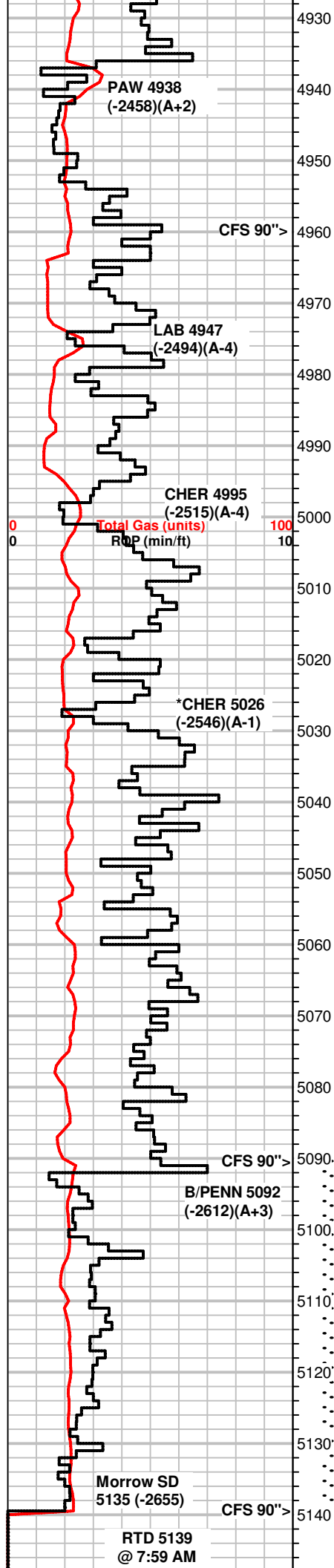
MS, crm, f-xln, hard, rare brn/gray WS, f-xln, fossilif

MS, scatt WS, brn to tan, mic-xln, dense, sub oolitic in part, rare

**+2 UGK shale gas**

**+45 UGK shale gas**

**shale gas**



MS, scatt WS, brn to tan, mic-xln, dense, sub oolitic in par, rare calcite veins

SH, blk, gray, gas bubbles

MS-WS, crm to tan/brn, f-xln, some massive txt, firm, fractured, oolitic/fossilif, scatt chalky pcs, dull fluor, no odor, NS, lt edge stn dry

Chert, opaque

MS, brn, to crm, f-xln, sub oolitic, some chalky pcs, scatt SH, gray

MS, crm to tan, f-xln, some pcs dense, most friable, scatt fossils, NS, lt edge stn dry

SH, blk, gray, gas bubbles, sea green

SH, gray, green, blk, gas bubbles

MS, Crm to lt. gray, chalky to f-xln, soft, rare fossilif. pcs, some dense, lt edge stn dry

MS, crm to gray, some brn, chalky to f-xln, mottled pcs, scatt fossils, some dark minerals, Chert, white

SH, blk, gray,

MS, crm, f-xln, sub oolitic/fossilif, gritty txt in part, hard, rare Chert, opaque

MS, crm to gray, A.A., dense, calcite veins, Chert, brn,

MS, crm to gray, f-xln, dense, scatt fossils, glauc, NS, Chert, white, some SH, gray, blk

SH, blk, gray

MS, crm to brn, mic-xln, dense, rare fossils, Chert, white

MS, crm, brn, gray, f-xln to chalky txt, firm, some pcs dense, sub oolitic, rare dark ooids, m-gr, NS

Scatt SH, blk gray

MS, brn, to gray/crm, A.A., dense, rare Chert, white, brn

MS, crm to gray, f-xln, firm, scatt pcs fractured, most dense, NS, rare Sh, blk, gray

MS, crm to gray A.A., scatt pcs sub oolitic, sli, inc in SH, blk, gray

MS, crm to tan, brn, f-xln, some chalky, scatt fossils, rare ooids in chalky matrix

SH, gray

MS, crm to tan, f-xln, most tan pcs scatt oolitic, fossil frgmts, NS

SH, gray, sea green,

SH, sea green, gray silty, blk

SH, sea green, mustard yellow, SS clusters, green to gray, f to co-gr, poorly sorted, tite cement, some pcs friable, NS

Chert, yellow, green

SS clusters, A.A, miineral inclusions

SH, varicolored, (red, yellow, green, grays), Chert, yellow, green, some fossils, gastropods

SH, varicolored A.A, Chert, white, fresh, very light spotty stn on some pcs, no cut, very faint odor in bag.

Chert white, varicolored, some oolitic, SS clusters, Co-gr poorly sorted, tite cement, spotty bright fluor, fair odor, slow cut, instant cut on break, diminishing show in 90" sample.

**+13 UGK shale gas**

**+9 UGK shale gas**

**+8 UGK shale gas**

**DST #1 5089-5139**  
**30-60-60-90**  
**FB, built to BOB/12"**  
**Weak Surf BB**  
**FB, built to BOB/12"**  
**Weak Surf BB**  
**330' GIP**  
**Rec:1099' Total**  
**45' MOCW**  
**(32o, 44w, 24m)**  
**613' GMOCW**  
**(20g,12o,58w,10m)**  
**441' Water**  
**IH 2569#**  
**IF 42-262#**  
**ISIP 1322#**  
**FF 252-525#**  
**FSIP 1321#**  
**FH 2333#**  
**Temp 122°F**  
**API Rw .18 @ 52°F**  
**CI 58000 ppm**

**+3 UGK**

11/18/2015

5150  
5160  
5170  
5180  
5190