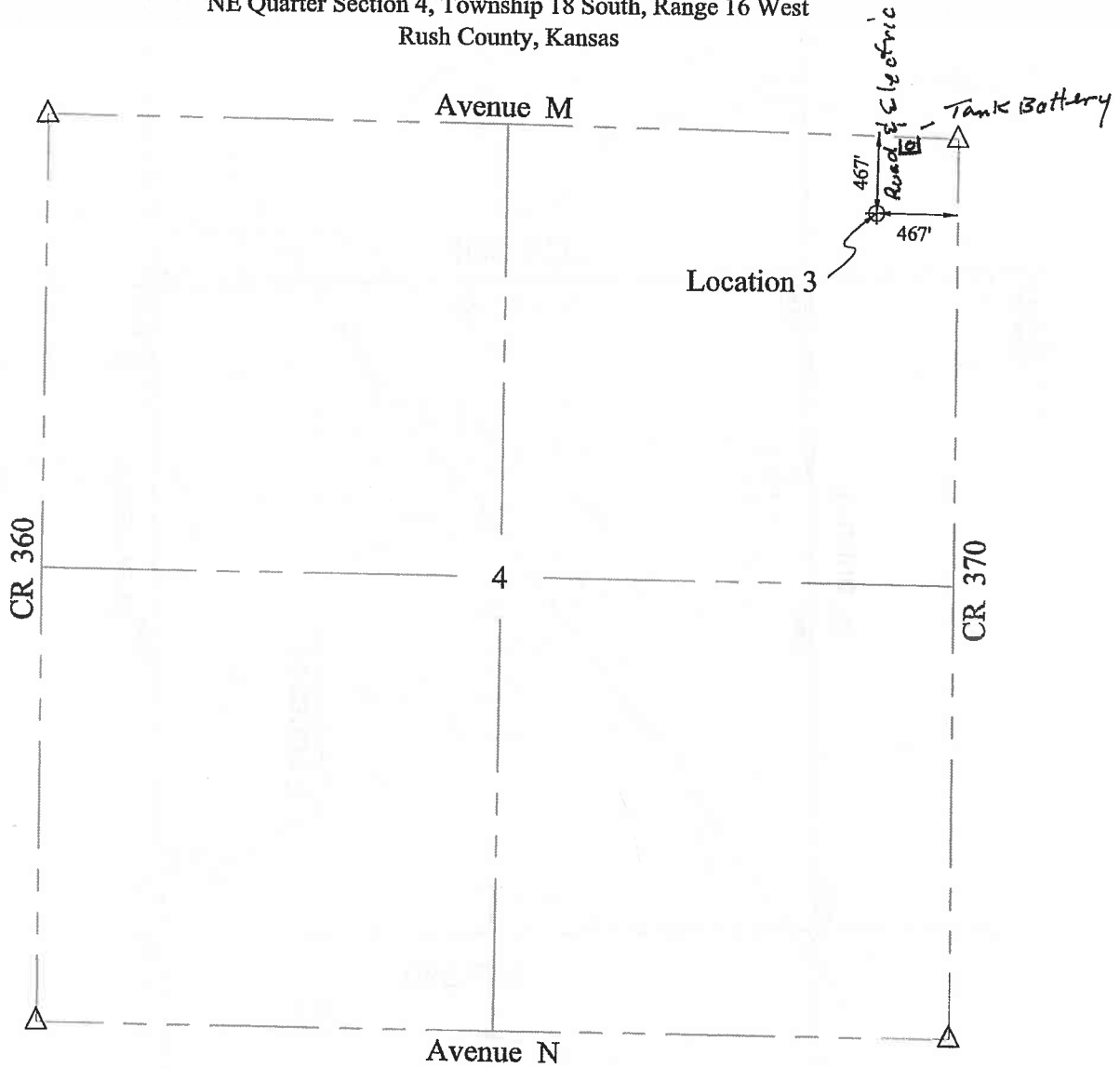


# WELL LOCATION

NE Quarter Section 4, Township 18 South, Range 16 West  
Rush County, Kansas



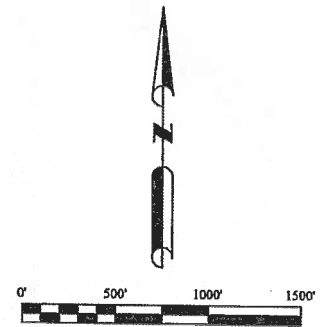
Blackstone Oil & Gas (Kansas)  
1301 McKinney St. Suite 2800  
Houston, TX 77010

Rush County, KS

Section 4, T18S R16W 467' FEL & 467' FNL of NE/4

Elevation 2016.6

Set 1/2"x24" rebar at surface with lathe and T-Post  
Pasture



Blackstone Oil & Gas  
1301 McKinney St. Ste 2800  
Houston, TX 77010

**ADVANCED LAND SURVEYING  
& DRAFTING**

PO Box 27 Hays, KS 67601 Office: (785) 650-0139 Fax: (785) 650-0189

Sheet:	1 of 1	Project #:	16-001
Drawn:	DEC	Scale:	1" = 1000'
Approved:	DEC	Date:	01/22/16