

# T28S, R33W, 6th P.M.

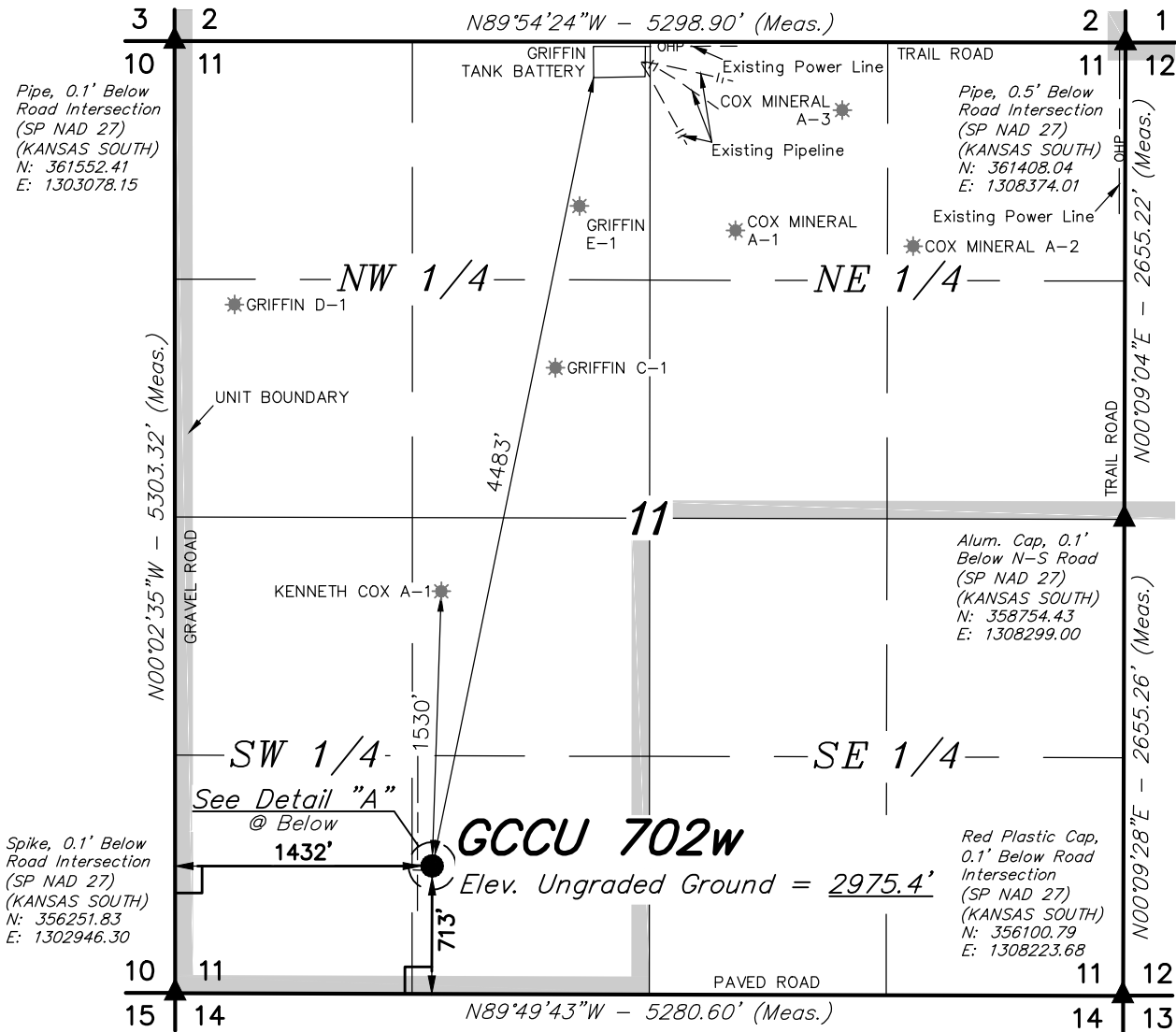
## LEGEND:

└─┘ = 90° SYMBOL

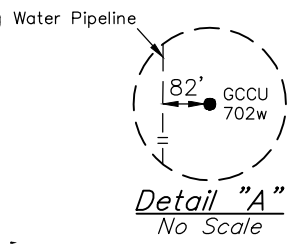
● = PROPOSED WELLHEAD.

▲ = SECTION CORNERS LOCATED.

\* = EXISTING WELLS



<b>NAD 83 (SURFACE LOCATION)</b>	
LATITUDE = 37°37'20.40" (37.622333)	
LONGITUDE = 100°54'08.75" (100.902431)	
<b>NAD 27 (SURFACE LOCATION)</b>	
LATITUDE = 37°37'20.32" (37.622311)	
LONGITUDE = 100°54'07.15" (100.901986)	
<b>STATE PLANE NAD 83 (KANSAS SOUTH)</b>	
N: 1669276.73 E: 616617.59	
<b>STATE PLANE NAD 27 (KANSAS SOUTH)</b>	
N: 356923.41 E: 1304394.99	



**CERTIFICATE**  
 THIS IS TO CERTIFY THAT THE ABOVE PLAT WAS PREPARED FROM FIELD NOTES OF ACTUAL SURVEYS MADE BY ME OR UNDER MY SUPERVISION AND THAT THE SAME ARE TRUE AND CORRECT TO THE BEST OF MY KNOWLEDGE AND BELIEF.



**BASIS OF BEARINGS**  
 BASIS OF BEARINGS IS A G.P.S. OBSERVATION

**BASIS OF ELEVATION**  
 THE BASIS OF ELEVATION, ELEV: 2943.84' WAS DERIVED FROM AN OPUS SOLUTION AT LAT: 37°33'17.64" LONG: 100°53'21.35" AND HAS A DATUM OF NAVD88.



## MERIT ENERGY COMPANY

**GCCU 702w**  
**713' FSL 1432' FWL**  
**SE 1/4 SW 1/4, SECTION 11, T28S, R33W, 6th P.M.**  
**HASKELL COUNTY, KANSAS**

SURVEYED BY	DATE	REVISED BY	DATE
J.P.	02-24-16		
DRAWN BY	DATE		
M.F.D.	02-25-16		
SCALE	1" = 1000'		



**UELS, LLC**  
 Corporate Office \* 85 South 200 East  
 Vernal, UT 84078 \* (435) 789-1017

## WELL LOCATION PLAT