

T28S, R33W, 6th P.M.

LEGEND:

└ = 90° SYMBOL

● = PROPOSED WELLHEAD.

▲ = SECTION CORNERS LOCATED.

* = EXISTING WELLS

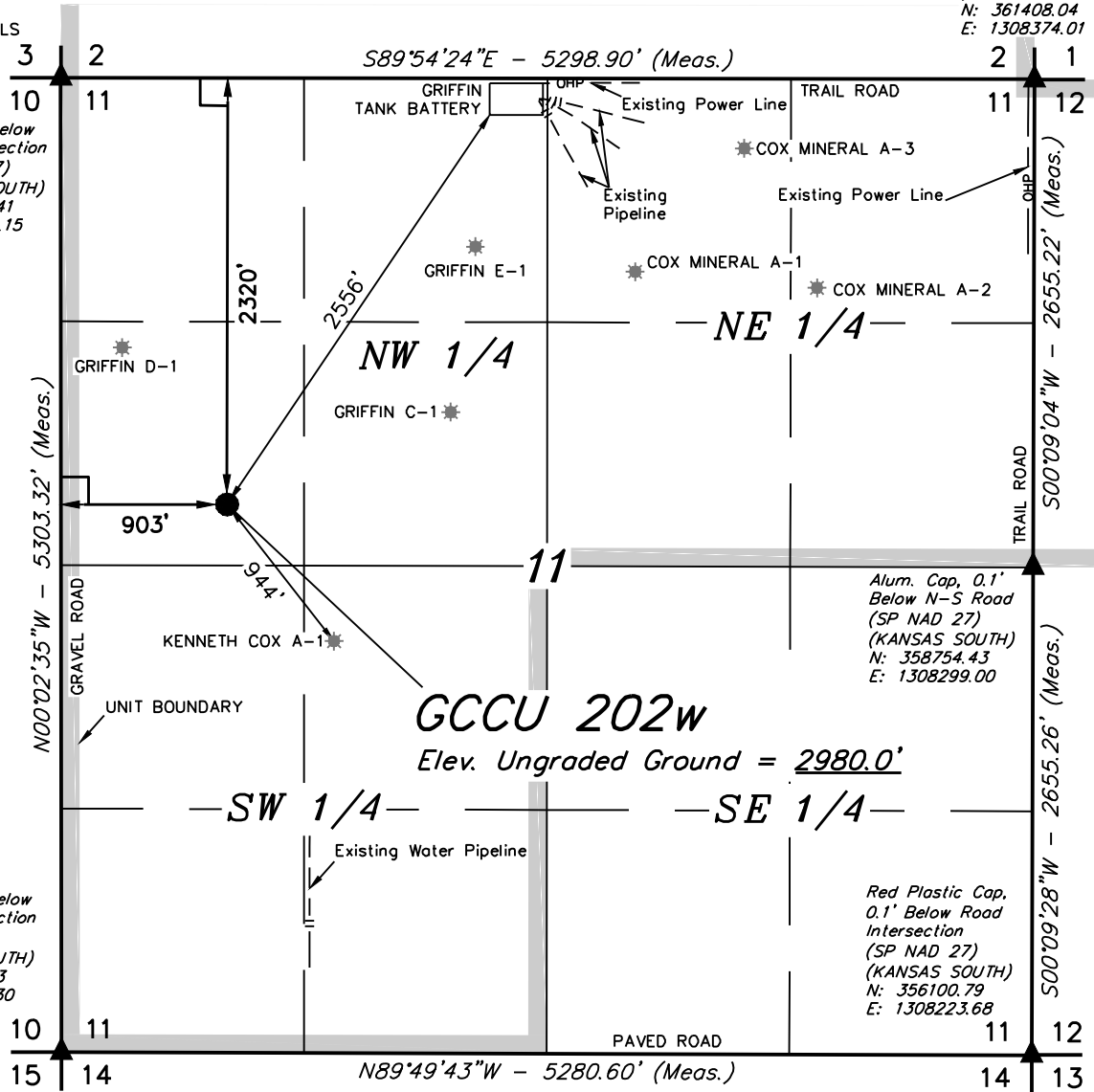
Pipe, 0.5' Below Road Intersection
(SP NAD 27)
(KANSAS SOUTH)
N: 361408.04
E: 1308374.01

Pipe, 0.1' Below Road Intersection
(SP NAD 27)
(KANSAS SOUTH)
N: 361552.41
E: 1303078.15

Spike, 0.1' Below Road Intersection
(SP NAD 27)
(KANSAS SOUTH)
N: 356251.83
E: 1302946.30

Alum. Cap, 0.1' Below N-S Road
(SP NAD 27)
(KANSAS SOUTH)
N: 358754.43
E: 1308299.00

Red Plastic Cap, 0.1' Below Road Intersection
(SP NAD 27)
(KANSAS SOUTH)
N: 356100.79
E: 1308223.68



GCCU 202W

Elev. Ungraded Ground = 2980.0'

NAD 83 (SURFACE LOCATION)
LATITUDE = 37°37'42.87" (37.628575)
LONGITUDE = 100°54'15.34" (100.904261)
NAD 27 (SURFACE LOCATION)
LATITUDE = 37°37'42.79" (37.628553)
LONGITUDE = 100°54'13.75" (100.903819)
STATE PLANE NAD 83 (KANSAS SOUTH)
N: 1671562.34 E: 616145.62
STATE PLANE NAD 27 (KANSAS SOUTH)
N: 359208.98 E: 1303923.02



CERTIFICATE

THIS IS TO CERTIFY THAT THE ABOVE PLAT WAS PREPARED FROM FIELD NOTES OF ACTUAL SURVEYS MADE BY ME OR UNDER MY SUPERVISION AND THAT THE SAME ARE TRUE AND CORRECT TO THE BEST OF MY KNOWLEDGE AND BELIEF.

Robert S. Justice
 JUSTICE
 REGISTERED LAND SURVEYOR
 REGISTRATION NO. 15349
 STATE OF KANSAS 03-01-16

BASIS OF BEARINGS
 BASIS OF BEARINGS IS A G.P.S. OBSERVATION

BASIS OF ELEVATION
 THE BASIS OF ELEVATION, ELEV: 2843.84' WAS DERIVED FROM AN OPUS SOLUTION AT LAT: 37°33'17.64" LONG: 100°53'21.35" AND HAS A DATUM OF NAVD88.



MERIT ENERGY COMPANY

GCCU 202w
2320' FNL 903' FWL
SW 1/4 NW 1/4, SECTION 11, T28S, R33W, 6th P.M.
HASKELL COUNTY, KANSAS

SURVEYED BY	DATE	REVISED BY	DATE
J.P.	02-24-16		
DRAWN BY	DATE		
C.D.	02-29-16		
SCALE	1" = 1000'		



UELS, LLC
 Corporate Office * 85 South 200 East
 Vernal, UT 84078 * (435) 789-1017

WELL LOCATION PLAT