

T28S, R33W, 6th P.M.

LEGEND:

└ = 90° SYMBOL

● = PROPOSED WELLHEAD.

▲ = SECTION CORNERS LOCATED.

* = EXISTING WELLS

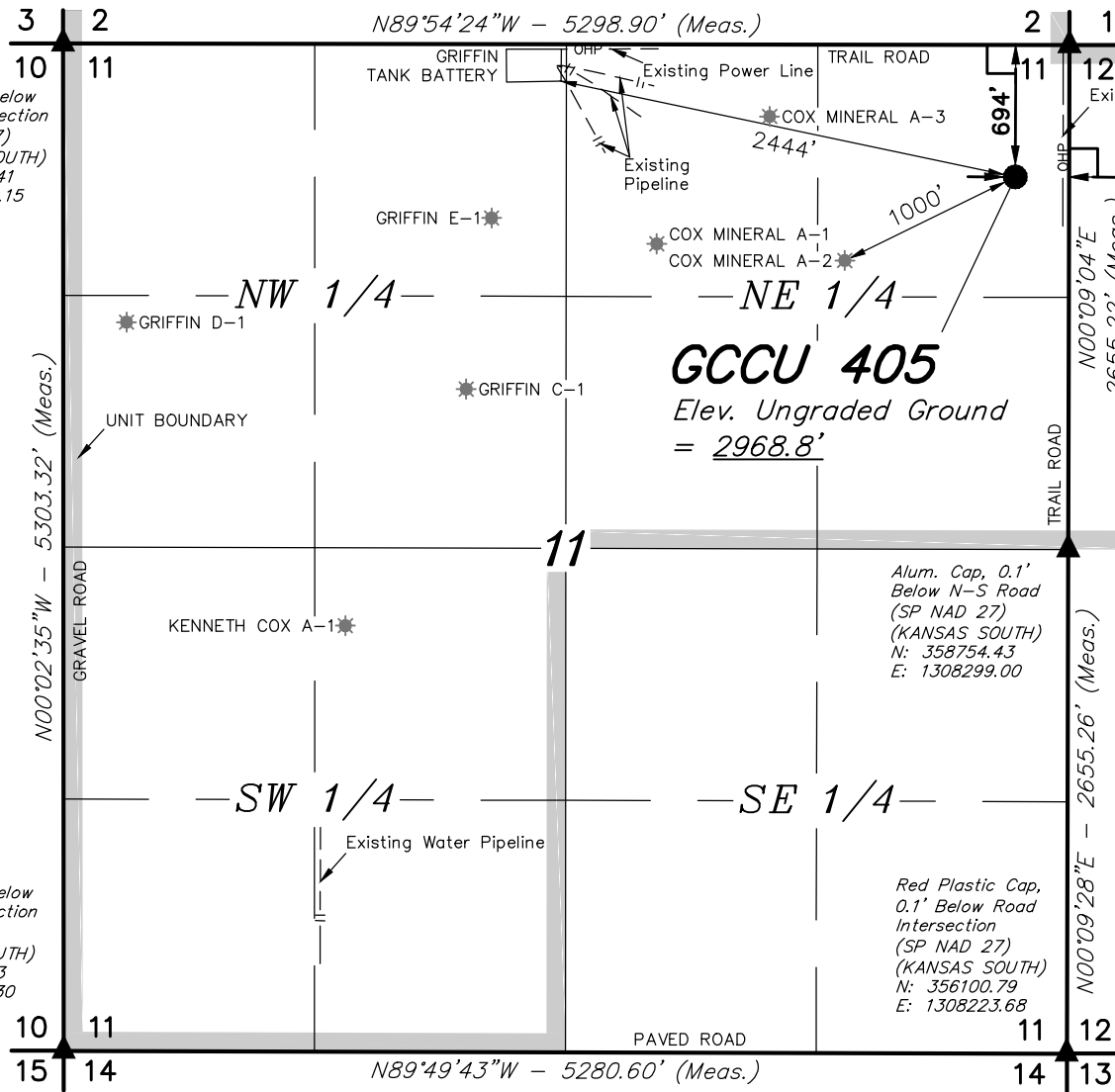
Pipe, 0.5' Below Road Intersection
(SP NAD 27)
(KANSAS SOUTH)
N: 361408.04
E: 1308374.01

Pipe, 0.1' Below Road Intersection
(SP NAD 27)
(KANSAS SOUTH)
N: 361552.41
E: 1303078.15

Spike, 0.1' Below Road Intersection
(SP NAD 27)
(KANSAS SOUTH)
N: 356251.83
E: 1302946.30

Alum. Cap, 0.1' Below N-S Road
(SP NAD 27)
(KANSAS SOUTH)
N: 358754.43
E: 1308299.00

Red Plastic Cap, 0.1' Below Road Intersection
(SP NAD 27)
(KANSAS SOUTH)
N: 356100.79
E: 1308223.68



NAD 83 (SURFACE LOCATION)	
LATITUDE = 37°37'58.88" (37.633022)	
LONGITUDE = 100°53'24.28" (100.890078)	
NAD 27 (SURFACE LOCATION)	
LATITUDE = 37°37'58.80" (37.633000)	
LONGITUDE = 100°53'22.68" (100.889633)	
STATE PLANE NAD 83 (KANSAS SOUTH)	
N: 1673075.31 E: 620293.82	
STATE PLANE NAD 27 (KANSAS SOUTH)	
N: 360721.93 E: 1308071.17	



CERTIFICATE
THIS IS TO CERTIFY THAT THE ABOVE PLAT WAS PREPARED FROM FIELD NOTES OF ACTUAL SURVEYS MADE BY ME OR UNDER MY SUPERVISION AND THAT THE SAME ARE TRUE AND CORRECT TO THE BEST OF MY KNOWLEDGE AND BELIEF.



BASIS OF BEARINGS
BASIS OF BEARINGS IS A G.P.S. OBSERVATION

BASIS OF ELEVATION
THE BASIS OF ELEVATION, ELEV: 2943.84' WAS DERIVED FROM AN OPUS SOLUTION AT LAT: 37°33'17.64" LONG: 100°53'21.35" AND HAS A DATUM OF NAVD88.



MERIT ENERGY COMPANY

GCCU 405
694' FNL 283' FEL
NE 1/4 NE 1/4, SECTION 11, T28S, R33W, 6th P.M.
HASKELL COUNTY, KANSAS

SURVEYED BY	DATE	REVISED BY	DATE
J.P.	02-24-16		
DRAWN BY	DATE		
M.F.D.	02-25-16		
SCALE	1" = 1000'		



UELS, LLC
Corporate Office * 85 South 200 East
Vernal, UT 84078 * (435) 789-1017

WELL LOCATION PLAT

T28S, R33W, 6th P.M.

LEGEND:

└ = 90° SYMBOL

● = PROPOSED WELLHEAD.

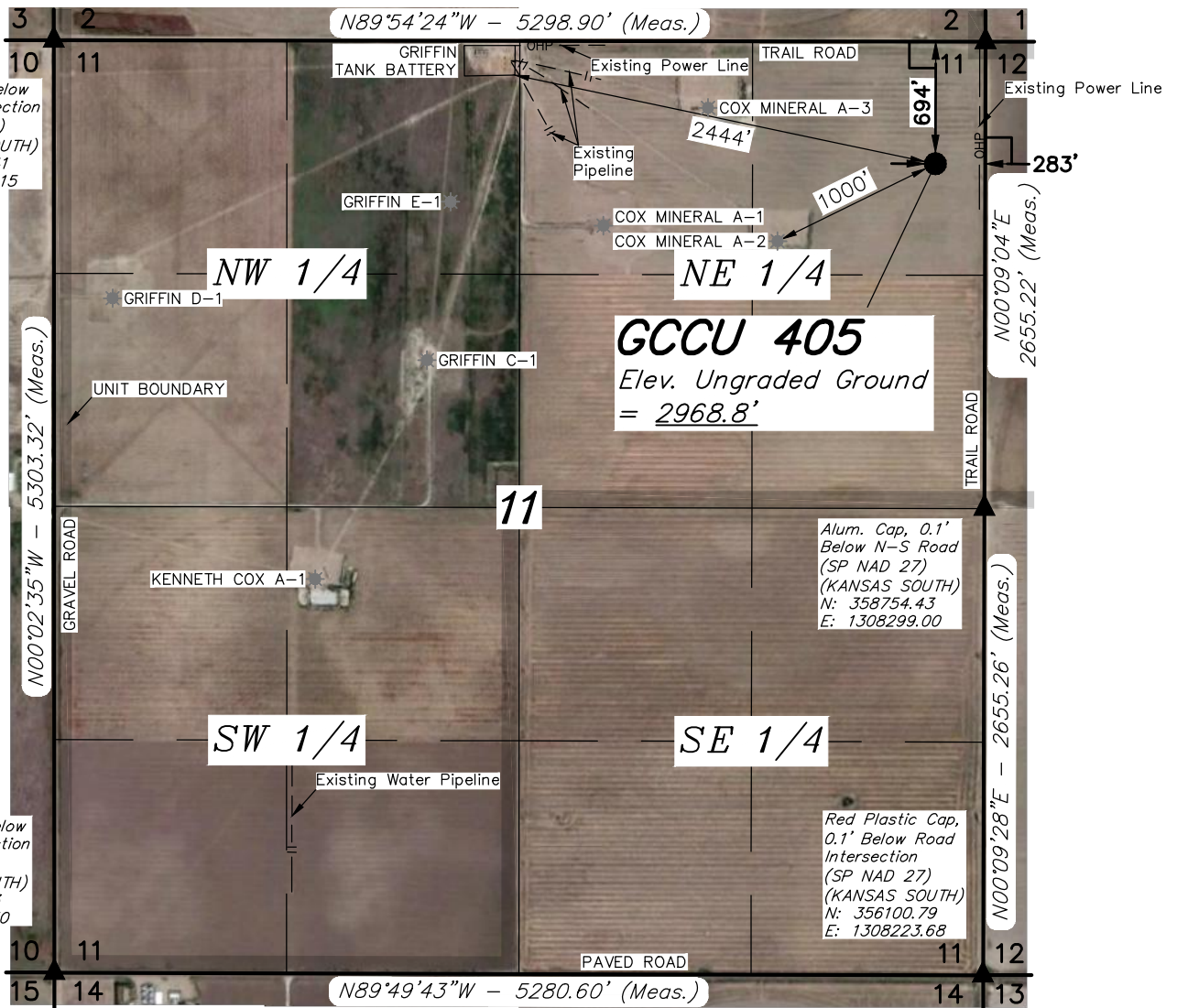
▲ = SECTION CORNERS LOCATED.

* = EXISTING WELLS

Pipe, 0.5' Below Road Intersection
(SP NAD 27)
(KANSAS SOUTH)
N: 361408.04
E: 1308374.01

Pipe, 0.1' Below Road Intersection
(SP NAD 27)
(KANSAS SOUTH)
N: 361552.41
E: 1303078.15

Spike, 0.1' Below Road Intersection
(SP NAD 27)
(KANSAS SOUTH)
N: 356251.83
E: 1302946.30



NAD 83 (SURFACE LOCATION)	
LATITUDE = 37°37'58.88" (37.633022)	
LONGITUDE = 100°53'24.28" (100.890078)	
NAD 27 (SURFACE LOCATION)	
LATITUDE = 37°37'58.80" (37.633000)	
LONGITUDE = 100°53'22.68" (100.889633)	
STATE PLANE NAD 83 (KANSAS SOUTH)	
N: 1673075.31 E: 620293.82	
STATE PLANE NAD 27 (KANSAS SOUTH)	
N: 360721.93 E: 1308071.17	



CERTIFICATE
THIS IS TO CERTIFY THAT THE ABOVE PLAT WAS PREPARED FROM FIELD NOTES OF ACTUAL SURVEYS MADE BY ME OR UNDER MY SUPERVISION AND THAT THE SAME ARE TRUE AND CORRECT TO THE BEST OF MY KNOWLEDGE AND BELIEF.



BASIS OF BEARINGS
BASIS OF BEARINGS IS A G.P.S. OBSERVATION

BASIS OF ELEVATION
THE BASIS OF ELEVATION, ELEV: 2943.84' WAS DERIVED FROM AN OPUS SOLUTION AT LAT: 37°33'17.64" LONG: 100°53'21.35" AND HAS A DATUM OF NAVD88.



MERIT ENERGY COMPANY

GCCU 405
694' FNL 283' FEL
NE 1/4 NE 1/4, SECTION 11, T28S, R33W, 6th P.M.
HASKELL COUNTY, KANSAS

SURVEYED BY	DATE	REVISED BY	DATE
J.P.	02-24-16		
DRAWN BY	DATE		
M.F.D.	02-25-16		
SCALE	1" = 1000'		



UELS, LLC
Corporate Office * 85 South 200 East
Vernal, UT 84078 * (435) 789-1017

WELL LOCATION PLAT

BEGINNING AT THE INTERSECTION OF US-83 AND KS-156 IN GARDEN CITY, KANSAS PROCEED IN A SOUTHERLY DIRECTION ALONG US-83 APPROXIMATELY 24.7 MILES TO THE JUNCTION OF THIS ROAD AND COUNTY ROAD 80 TO THE WEST; TURN RIGHT AND PROCEED IN A WESTERLY DIRECTION APPROXIMATELY 1.0 MILES TO THE JUNCTION OF THIS ROAD AND COUNTY ROAD L.L. TO THE SOUTH; TURN LEFT AND PROCEED IN A SOUTHERLY DIRECTION APPROXIMATELY 0.1 MILES. FROM THIS POINT, THE PROPOSED WELL IS APPROXIMATELY 283' WESTERLY.

TOTAL DISTANCE FROM GARDEN CITY, KANSAS TO THE PROPOSED WELL LOCATION IS APPROXIMATELY 25.8 MILES.

MERIT ENERGY COMPANY

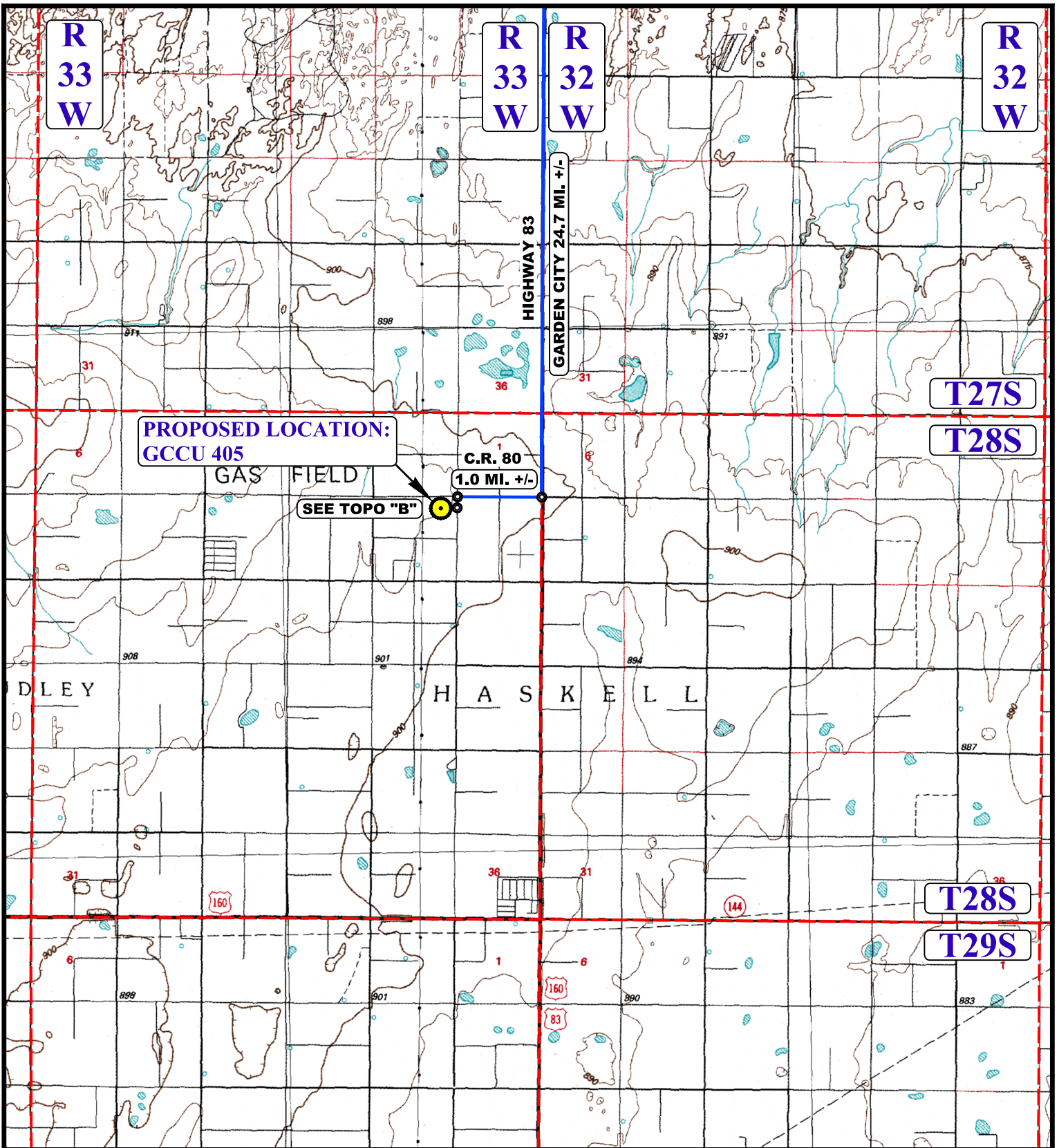
**GCCU 405
694' FNL 283' FEL
NE 1/4 NE 1/4, SECTION 11, T28S, R33W, 6th P.M.
HASKELL COUNTY, KANSAS**

SURVEYED BY	DATE	REVISED BY	DATE
J.P.	02-24-16		
DRAWN BY	DATE		
M.F.D.	02-25-16		

ROAD DESCRIPTION



UELS, LLC
Corporate Office * 85 South 200 East
Vernal, UT 84078 * (435) 789-1017



LEGEND:

 **PROPOSED LOCATION**



UELS, LLC
Corporate Office * 85 South 200 East
Vernal, UT 84078 * (435) 789-1017

MERIT ENERGY COMPANY

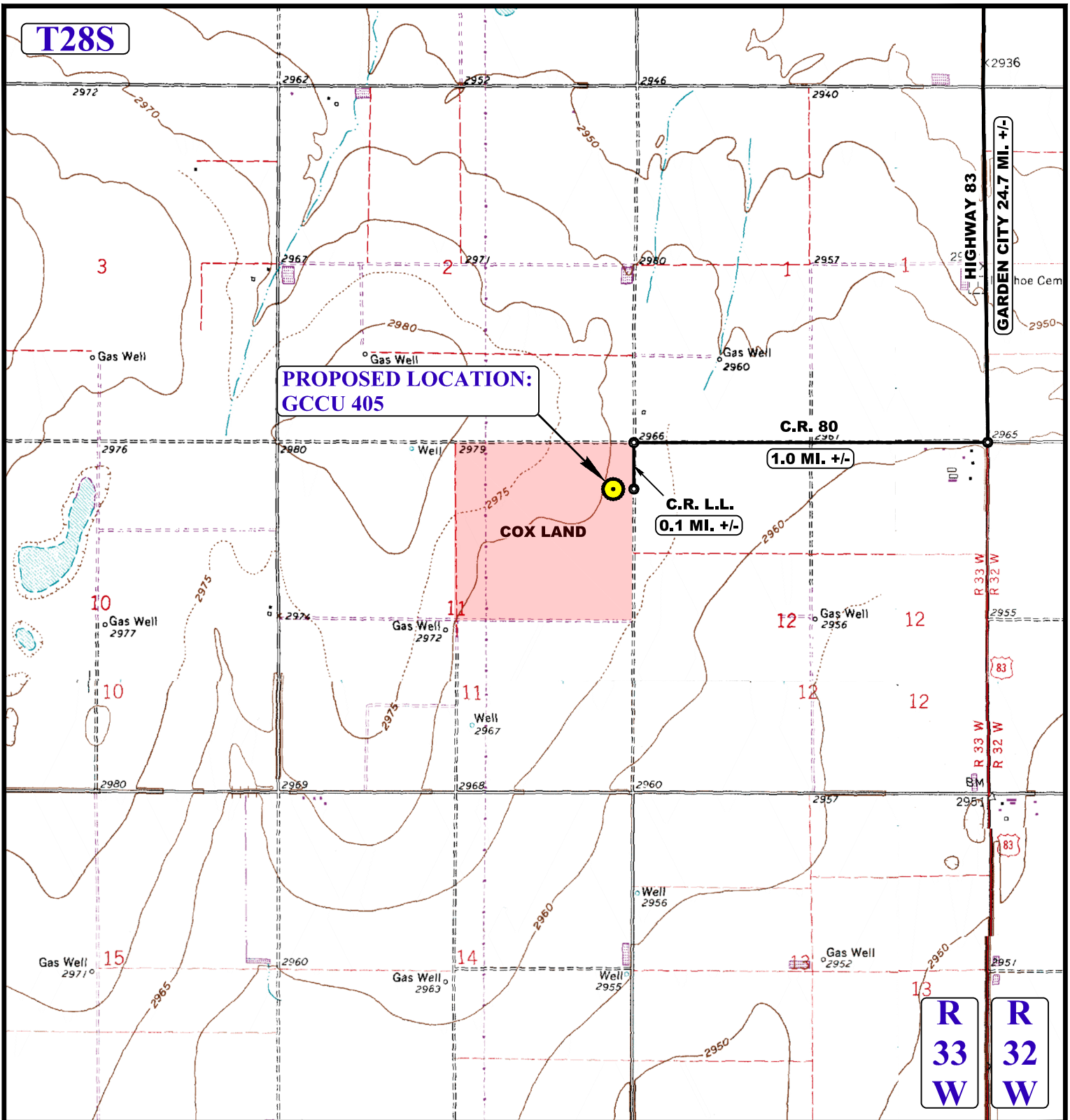
GCCU 405
694' FNL 283' FEL
NE 1/4 NE 1/4, SECTION 11, T28S, R33W, 6th P.M.
HASKELL COUNTY, KANSAS

SURVEYED BY	DATE	REVISED BY	DATE
J.P.	02-24-16		
DRAWN BY	DATE		
M.F.D.	02-25-16		
SCALE	1 : 100,000		

ACCESS ROAD MAP

TOPO A

T28S



NOTE: PARCEL DATA SHOWN HAS BEEN OBTAINED FROM VARIOUS SOURCES AND SHOULD BE USED FOR MAPPING, GRAPHIC AND PLANNING PURPOSES ONLY. NO WARRANTY IS MADE BY UINTAH ENGINEERING AND LAND SURVEYING (UELS) FOR ACCURACY OF THE PARCEL DATA.

LEGEND:

— EXISTING ROAD

MERIT ENERGY COMPANY

GCCU 405
 694' FNL 283' FEL
 NE 1/4 NE 1/4, SECTION 11, T28S, R33W, 6th P.M.
 HASKELL COUNTY, KANSAS



SURVEYED BY	DATE	REVISED BY	DATE
J.P.	02-24-16		
DRAWN BY	DATE		
M.F.D.	02-25-16		
SCALE	1" = 2000'		



UELS, LLC
 Corporate Office * 85 South 200 East
 Vernal, UT 84078 * (435) 789-1017

ACCESS ROAD MAP

TOPO B