

# T28S, R33W, 6th P.M.

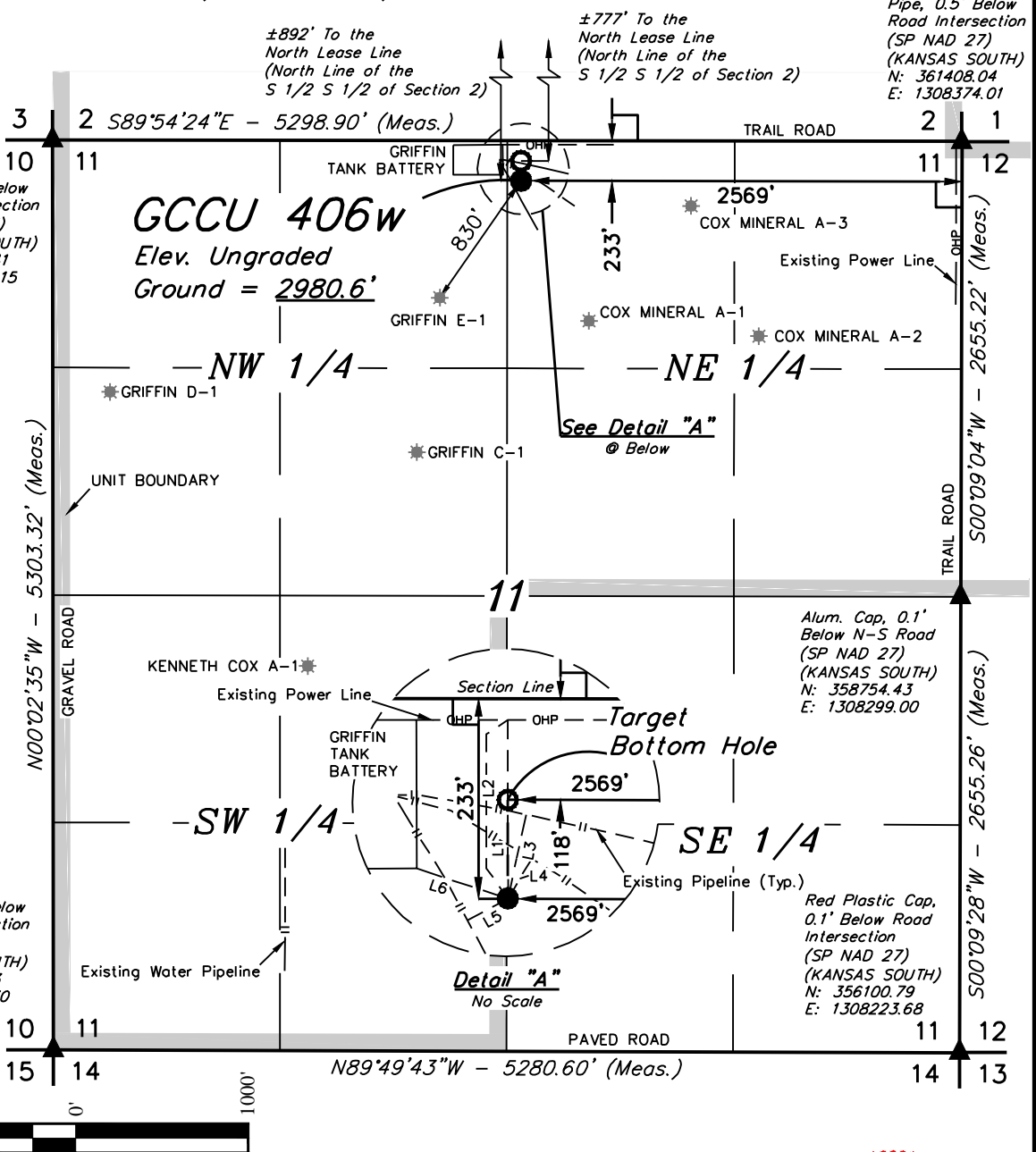
## LEGEND:

- └─┘ = 90° SYMBOL
- = PROPOSED WELLHEAD.
- = TARGET BOTTOM HOLE.
- ▲ = SECTION CORNERS LOCATED. (NAD 83)
- \* = EXISTING WELLS

Pipe, 0.5' Below Road Intersection (SP NAD 27) (KANSAS SOUTH)  
N: 361408.04  
E: 1308374.01

Pipe, 0.1' Below Road Intersection (SP NAD 27) (KANSAS SOUTH)  
N: 361552.41  
E: 1303078.15

LINE TABLE		
LINE	DIRECTION	LENGTH
L1	N00°04'06"W	114.93'
L2	N00°01'46"W	208.08'
L3	N12°16'18"E	100.06'
L4	N30°45'39"E	53.86'
L5	S61°50'27"W	53.43'
L6	N71°45'46"W	111.91'



<b>NAD 83 (SURFACE LOCATION)</b> LATITUDE = 37°38'03.48" (37.634300) LONGITUDE = 100°53'52.66" (100.897961)	<b>NAD 83 (TARGET BOTTOM HOLE)</b> LATITUDE = 37°38'04.62" (37.634617) LONGITUDE = 100°53'52.67" (100.897964)
<b>NAD 27 (SURFACE LOCATION)</b> LATITUDE = 37°38'03.39" (37.634275) LONGITUDE = 100°53'51.07" (100.897519)	<b>NAD 27 (TARGET BOTTOM HOLE)</b> LATITUDE = 37°38'04.53" (37.634592) LONGITUDE = 100°53'51.07" (100.897519)
<b>STATE PLANE NAD 83 (KANSAS SOUTH)</b> N: 1673598.96 E: 618022.96	<b>STATE PLANE NAD 83 (KANSAS SOUTH)</b> N: 1673713.84 E: 618025.77
<b>STATE PLANE NAD 27 (KANSAS SOUTH)</b> N: 361245.56 E: 1305800.33	<b>STATE PLANE NAD 27 (KANSAS SOUTH)</b> N: 361360.44 E: 1305803.14

**CERTIFICATE**  
THIS IS TO CERTIFY THAT THE ABOVE PLAT WAS PREPARED FROM FIELD NOTES OF ACTUAL SURVEYS MADE BY ME OR UNDER MY SUPERVISION AND THAT THE SAME ARE TRUE AND CORRECT TO THE BEST OF MY KNOWLEDGE AND BELIEF.



**BASIS OF BEARINGS**  
BASIS OF BEARINGS IS A G.P.S. OBSERVATION  
**BASIS OF ELEVATION**

THE BASIS OF ELEVATION, ELEV: 2943.84' WAS DERIVED FROM AN OPUS SOLUTION AT LAT: 37°33'17.64" LONG: 100°53'21.35" AND HAS A DATUM OF NAVD88.

## MERIT ENERGY COMPANY

**GCCU 406w**  
**233' FNL 2569' FEL**  
**NW 1/4 NE 1/4, SECTION 11, T28S, R33W, 6th P.M.**  
**HASKELL COUNTY, KANSAS**

<b>SURVEYED BY</b>	<b>DATE</b>	<b>REVISED BY</b>	<b>DATE</b>
J.P.	02-24-16	C.D.	03-02-16
<b>DRAWN BY</b>	<b>DATE</b>		
T.E.	02-25-16		
<b>SCALE</b>	1" = 1000'		

## WELL LOCATION PLAT



**UELS, LLC**  
Corporate Office \* 85 South 200 East  
Vernal, UT 84078 \* (435) 789-1017

