

T28S, R33W, 6th P.M.

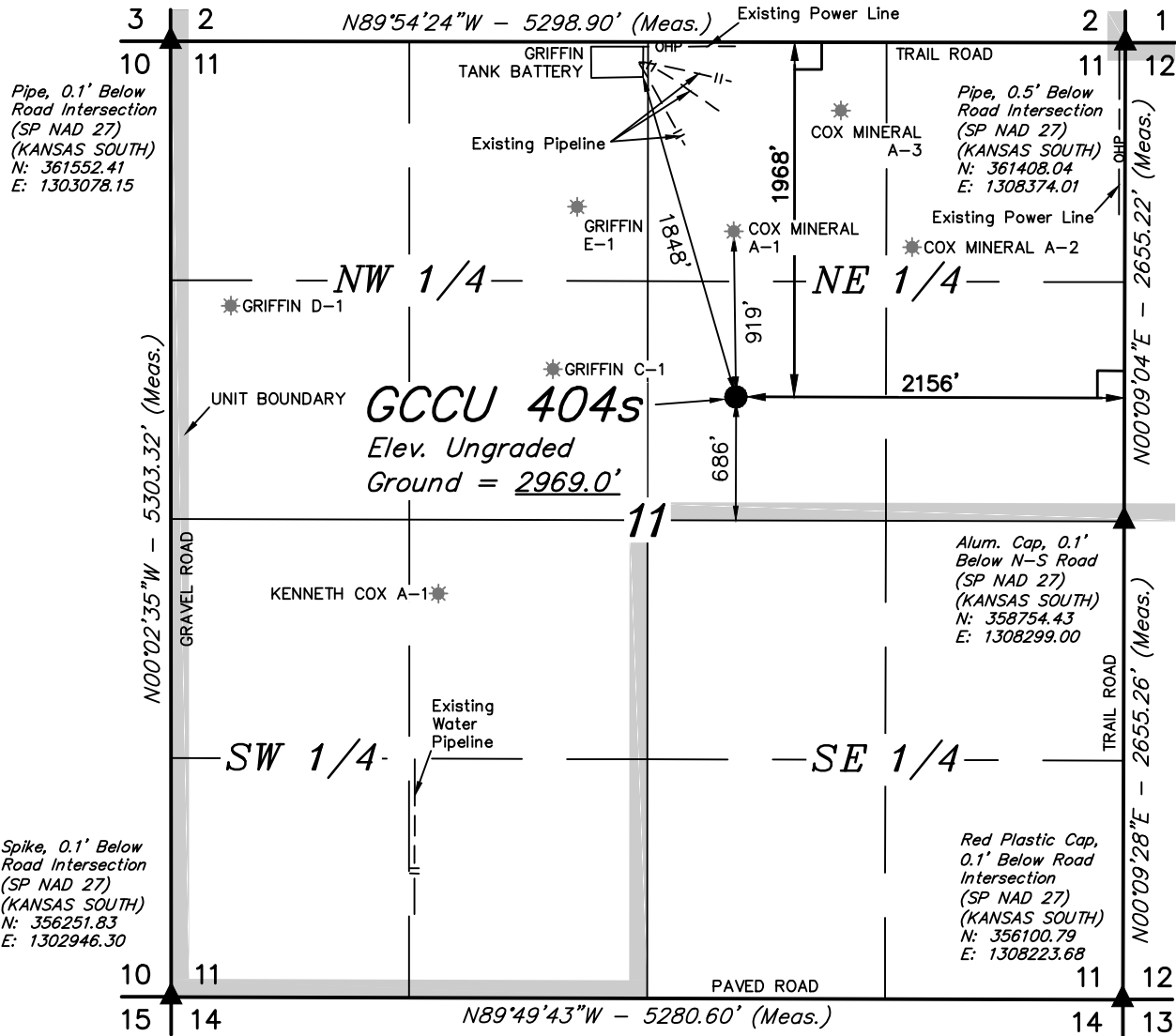
LEGEND:

└─┘ = 90° SYMBOL

● = PROPOSED WELLHEAD.

▲ = SECTION CORNERS LOCATED.

* = EXISTING WELLS



NAD 83 (SURFACE LOCATION)
LATITUDE = 37°37'46.32" (37.629533)
LONGITUDE = 100°53'47.59" (100.896553)
NAD 27 (SURFACE LOCATION)
LATITUDE = 37°37'46.23" (37.629508)
LONGITUDE = 100°53'45.99" (100.896108)
STATE PLANE NAD 83 (KANSAS SOUTH)
N: 1671853.32 E: 618386.64
STATE PLANE NAD 27 (KANSAS SOUTH)
N: 359499.96 E: 1306164.02



CERTIFICATE

THIS IS TO CERTIFY THAT THE ABOVE PLAT WAS PREPARED FROM FIELD NOTES OF ACTUAL SURVEYS MADE BY ME OR UNDER MY SUPERVISION AND THAT THE SAME ARE TRUE AND CORRECT TO THE BEST OF MY KNOWLEDGE AND BELIEF.

Robert Justin Penner

REGISTERED LAND SURVEYOR
REGISTRATION NO. 18549
STATE OF KANSAS



BASIS OF BEARINGS
BASIS OF BEARINGS IS A G.P.S. OBSERVATION

BASIS OF ELEVATION

THE BASIS OF ELEVATION, ELEV: 2943.84' WAS DERIVED FROM AN OPUS SOLUTION AT LAT: 37°33'17.64" LONG: 100°53'21.35" AND HAS A DATUM OF NAVD88.



MERIT ENERGY COMPANY

GCCU 404s
1968' FNL 2156' FEL
SW 1/4 NE 1/4, SECTION 11, T28S, R33W, 6th P.M.
HASKELL COUNTY, KANSAS

SURVEYED BY	DATE	REVISED BY	DATE
J.P.	02-24-16		
DRAWN BY	DATE		
S.S.	02-29-16		
SCALE	1" = 1000'		



UELS, LLC
Corporate Office * 85 South 200 East
Vernal, UT 84078 * (435) 789-1017

WELL LOCATION PLAT