

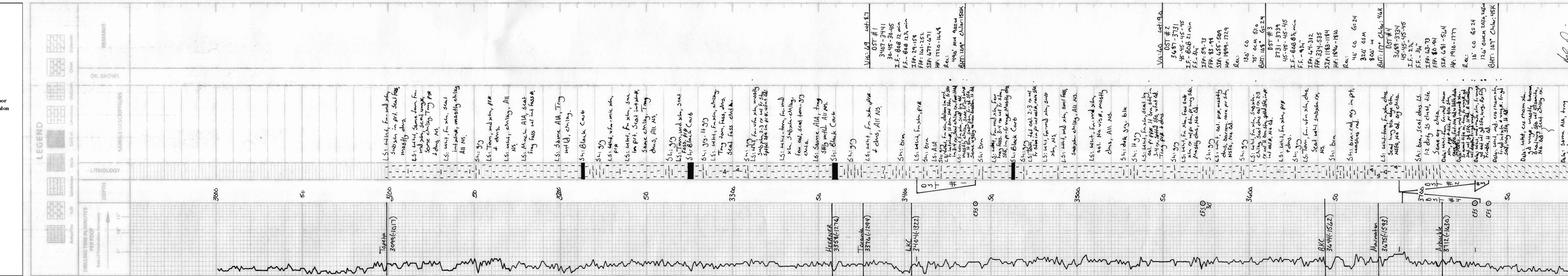
Marc A. Downing Consulting Petroleum Geologist		Geologic Report Drilling Time and Sample Log			
Operator Downings-Nelson Oil Co., Inc.		Elevation KB 2082 DF 2080 GL 2074			
Lease Lisa No. 1-25		Casing Record Surface 8 5/8" @ 220' Production None Electrical Surveys CNDL, DIL, MEL			
API # 15-051-26821-0000		Field Wildcat			
Location 920' FSL & 990' FEL		Sec. 25 Twp. 14s Rge. 19w			
County Ellis State Kansas		Formation Sample tops Log Tops Datum Struct Comp			
Top Anhydrite	1321	1322	+760	FL	
Base Anhydrite	1367	1368	+714	-2	
Topoka	3099	3098	-1016	-1	
Heebner	3358	3356	-1274	FL	
Toronto	3376	3374	-1292	+1	
LKC	3404	3402	-1320	+1	
BKC	3644	3641	-1559	+4	
Arbuckle	3712	3710	-1628	+11	
Total Depth	3789	3789	-1707		
Reference Well For Structural Comparison Sarah #1-25		DNOCI 735' ENL & 1815' FEL		Sec. 25-14s-19w	

Drilling Contractor	Discovery Drilling, Rig #3
Commenced	2-23-16
Completed	2-9-16
Samples Saved From	3100 To RTD
Drilling Time Kept From	3000 To RTD
Samples Examined From	3100 To RTD
Geological Supervision From	3000 To RTD

Summary and Recommendations

The Sarah #1-25 ran structurally high to the nearby dry hole. Due to poor development in the LKC and Arbuckle, it was decided to plug and abandon the well.

Respectfully Submitted,
Marc A. Downing



M.A. Downing