

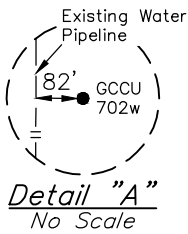
# T28S, R33W, 6th P.M.

## LEGEND:

- └─┘ = 90° SYMBOL
- = PROPOSED WELLHEAD.
- = TARGET BOTTOM HOLE.
- ▲ = SECTION CORNERS LOCATED. (NAD 83)
- ★ = EXISTING WELLS

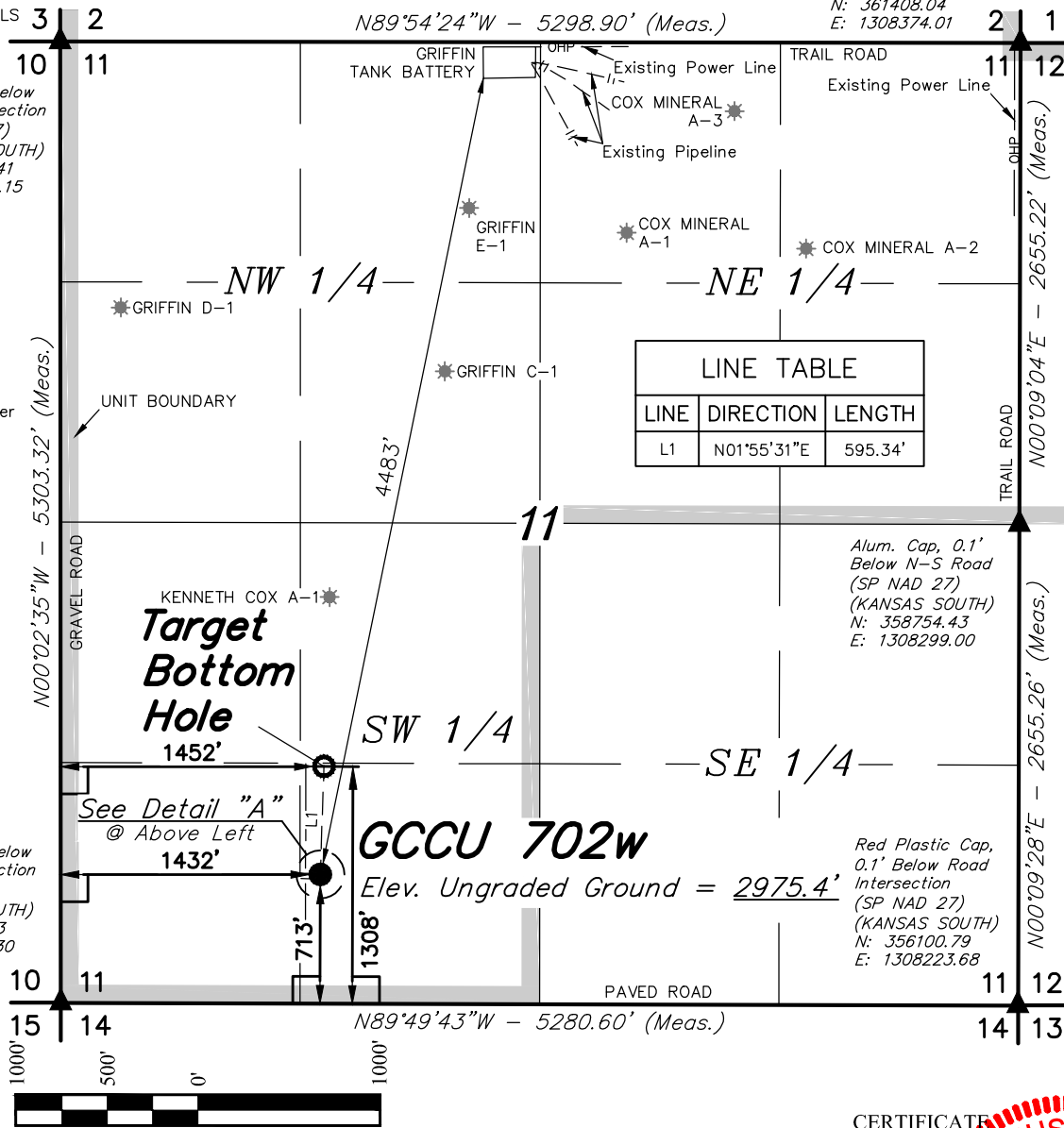
Pipe, 0.5' Below Road Intersection  
(SP NAD 27)  
(KANSAS SOUTH)  
N: 361408.04  
E: 1308374.01

Pipe, 0.1' Below Road Intersection  
(SP NAD 27)  
(KANSAS SOUTH)  
N: 361552.41  
E: 1303078.15



Detail "A"  
No Scale

Spike, 0.1' Below Road Intersection  
(SP NAD 27)  
(KANSAS SOUTH)  
N: 356251.83  
E: 1302946.30



LINE TABLE		
LINE	DIRECTION	LENGTH
L1	N01°55'31"E	595.34'

Alum. Cap, 0.1' Below N-S Road  
(SP NAD 27)  
(KANSAS SOUTH)  
N: 358754.43  
E: 1308299.00

Red Plastic Cap, 0.1' Below Road Intersection  
(SP NAD 27)  
(KANSAS SOUTH)  
N: 356100.79  
E: 1308223.68

<b>NAD 83 (SURFACE LOCATION)</b>	<b>NAD 83 (TARGET BOTTOM HOLE)</b>
LATITUDE = 37°37'20.40" (37.622333)	LATITUDE = 37°37'26.29" (37.623969)
LONGITUDE = 100°54'08.75" (100.902431)	LONGITUDE = 100°54'08.50" (100.902361)
<b>NAD 27 (SURFACE LOCATION)</b>	<b>NAD 27 (TARGET BOTTOM HOLE)</b>
LATITUDE = 37°37'20.32" (37.622311)	LATITUDE = 37°37'26.20" (37.623944)
LONGITUDE = 100°54'07.15" (100.901986)	LONGITUDE = 100°54'06.90" (100.901917)
<b>STATE PLANE NAD 83 (K.S. SOUTH)</b>	<b>STATE PLANE NAD 83 (K.S. SOUTH)</b>
N: 1669276.73 E: 616617.59	N: 1669870.91 E: 616652.83
<b>STATE PLANE NAD 27 (K.S. SOUTH)</b>	<b>STATE PLANE NAD 27 (K.S. SOUTH)</b>
N: 356923.41 E: 1304394.99	N: 357517.58 E: 1304430.23

CERTIFICATE  
THIS IS TO CERTIFY THAT THE ABOVE PLAT WAS PREPARED FROM FIELD NOTES OF ACTUAL SURVEYS MADE BY ME OR UNDER MY SUPERVISION AND THAT THE SAME ARE TRUE AND CORRECT TO THE BEST OF MY KNOWLEDGE AND BELIEF.



**BASIS OF BEARINGS**  
BASIS OF BEARINGS IS A G.P.S. OBSERVATION

**BASIS OF ELEVATION**  
THE BASIS OF ELEVATION, ELEV: 2943.84' WAS DERIVED FROM AN OPUS SOLUTION AT LAT: 37°33'17.64" LONG: 100°53'21.35" AND HAS A DATUM OF NAVD88.

## MERIT ENERGY COMPANY

**GCCU 702w**  
**713' FSL 1432' FWL**  
**SE 1/4 SW 1/4, SECTION 11, T28S, R33W, 6th P.M.**  
**HASKELL COUNTY, KANSAS**

<b>SURVEYED BY</b>	<b>DATE</b>	<b>REVISED BY</b>	<b>DATE</b>
J.P.	02-24-16	M.F.D.	03-08-16
<b>DRAWN BY</b>	<b>DATE</b>		
M.F.D.	02-25-16		
<b>SCALE</b>	1" = 1000'		

## WELL LOCATION PLAT



**UELS, LLC**  
Corporate Office \* 85 South 200 East  
Vernal, UT 84078 \* (435) 789-1017

