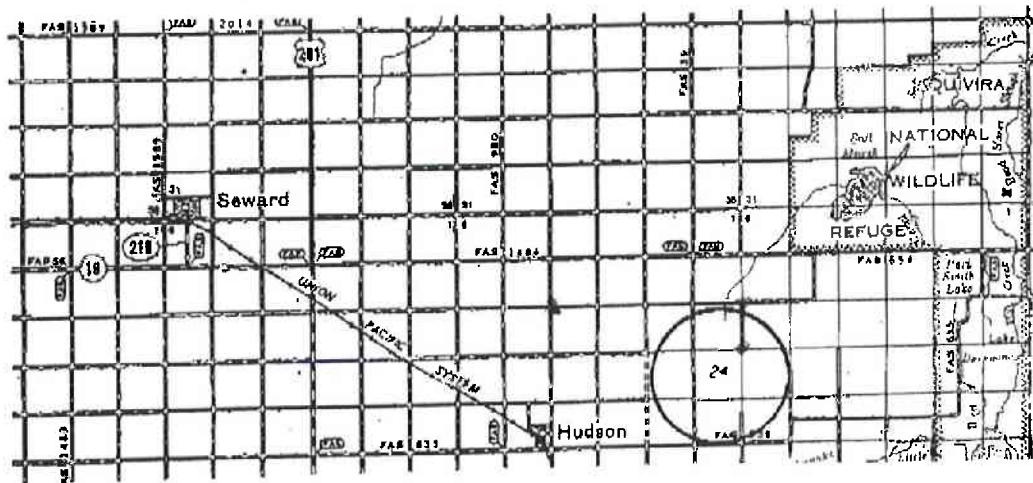
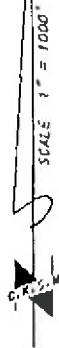
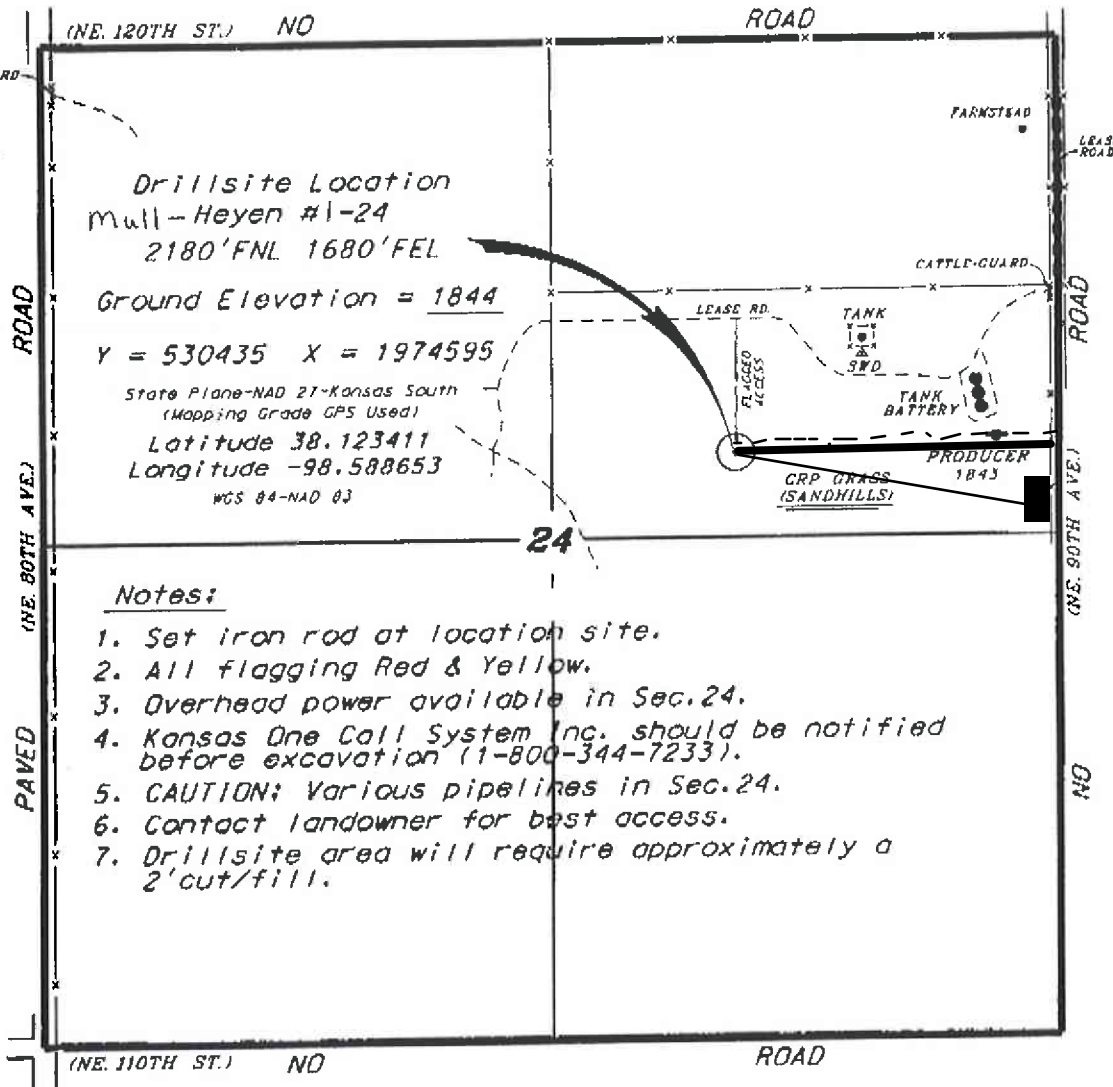


**L.D. DRILLING, INC.**  
 Mull - HEYEN LEASE  
 NE. 1/4, SECTION 24, T22S, R12W  
 STAFFORD COUNTY, KANSAS

**Directions:**

From the four-way intersection at the southeast corner of Hudson, Kansas (NE. 100th St & NE. 50th Ave.) go 3.0 miles North, then go 4.0 miles East, then go 1.0 miles South to the NE. corner of Section 24, then go 0.41 miles South, then go 0.31 miles West to location.

Ingress and egress to location as shown on this plot is per usage only and may not be legally opened for public use. Contact landowner, tenant and county road department for access.



• Controlling data is based upon the best maps and photographs available to us and upon a regular section of land containing 640 acres.  
 • Approximate section lines were determined using the normal standard of care of oilfield surveyors practicing in the state of Kansas. The section corners, which establish the precise section lines, were not necessarily located, and the exact location of the drillsite location in the section is not guaranteed. Therefore, the operator securing this service and accepting this plot and all other parties relying thereon agree to hold Central Kansas Oilfield Services, Inc., its officers and employees harmless from all losses, costs and expenses and said entities released from any liability from incidental or consequential damages.  
 • Elevations derived from National Geodetic Vertical Datum.

Date March 15, 2016