



TRILOBITE TESTING, INC

DRILL STEM TEST REPORT

Suemaour Exploration & Production

27-5s-28w Decatur KS

802 N Carancahua
Corpus Christi, TX 78401

Jacobs Brothers #1

Job Ticket: 62870

DST#: 1

ATTN: Rocky Milford

Test Start: 2016.01.19 @ 00:58:00

GENERAL INFORMATION:

Formation: **LKC "A"**

Deviated: No Whipstock: ft (KB)

Time Tool Opened: 03:34:00

Time Test Ended: 09:23:15

Test Type: Conventional Bottom Hole (Initial)

Tester: James Winder

Unit No: 83

Interval: 3925.00 ft (KB) To 3950.00 ft (KB) (TVD)

Reference Elevations: 2757.00 ft (KB)

Total Depth: 3950.00 ft (KB) (TVD)

2752.00 ft (CF)

Hole Diameter: 7.88 inches Hole Condition: Fair

KB to GR/CF: 5.00 ft

Serial #: 6769

Inside

Press@RunDepth: 106.31 psig @ 3926.00 ft (KB)

Capacity: 8000.00 psig

Start Date: 2016.01.19

End Date:

2016.01.19

Last Calib.:

2016.01.19

Start Time: 00:58:05

End Time:

09:23:14

Time On Btm:

2016.01.19 @ 03:33:45

Time Off Btm:

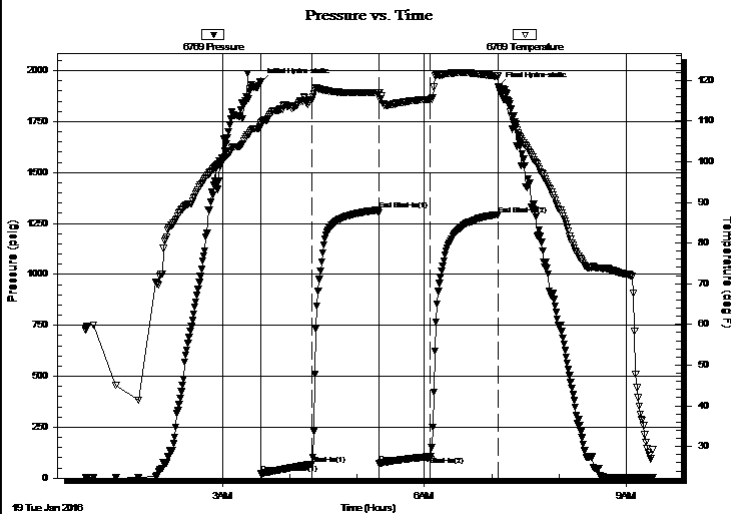
2016.01.19 @ 07:06:00

TEST COMMENT: 45 - IF: 1/4" Blow at open, built to 7 1/2" (Diesel in bucket)

60 - IS: No blow back

45 - FF: Blow built to 6"

60 - FS: No blow back



PRESSURE SUMMARY

| Time (Min.) | Pressure (psig) | Temp (deg F) | Annotation |
|-------------|-----------------|--------------|----------------------|
| 0 | 1943.42 | 108.56 | Initial Hydro-static |
| 1 | 21.31 | 109.04 | Open To Flow (1) |
| 46 | 68.66 | 115.21 | Shut-In(1) |
| 106 | 1315.42 | 116.88 | End Shut-In(1) |
| 106 | 72.64 | 116.92 | Open To Flow (2) |
| 152 | 106.31 | 115.31 | Shut-In(2) |
| 212 | 1294.05 | 121.05 | End Shut-In(2) |
| 213 | 1921.42 | 118.40 | Final Hydro-static |

Recovery

| Length (ft) | Description | Volume (bbl) |
|-------------|----------------------------|--------------|
| 124.00 | SO/MCW 79%w , 19%m, 2%o | 0.61 |
| 33.00 | OWCM 70%m, 17%w , 10%o, 3% | 0.16 |
| 30.00 | MCO 75%o, 2%g | 0.15 |
| 30.00 | GO 50%o, 50%g | 0.42 |
| | | |
| | | |

Gas Rates

| | Choke (inches) | Pressure (psig) | Gas Rate (Mcf/d) |
|--|----------------|-----------------|------------------|
| | | | |



**TRILOBITE
TESTING, INC**

DRILL STEM TEST REPORT

FLUID SUMMARY

Suemauro Exploration & Production

27-5s-28w Decatur KS

802 N Carancahua
Corpus Christi, TX 78401

Jacobs Brothers #1

Job Ticket: 62870

DST#: 1

ATTN: Rocky Milford

Test Start: 2016.01.19 @ 00:58:00

Mud and Cushion Information

Mud Type: Gel Chem

Cushion Type:

Oil API:

deg API

Mud Weight: 9.00 lb/gal

Cushion Length:

ft

Water Salinity:

27000 ppm

Viscosity: 56.00 sec/qt

Cushion Volume:

bbbl

Water Loss: 6.00 in³

Gas Cushion Type:

Resistivity: ohm.m

Gas Cushion Pressure:

psig

Salinity: 1000.00 ppm

Filter Cake: 2.00 inches

Recovery Information

Recovery Table

| Length ft | Description | Volume bbbl |
|--------------|---------------------------|----------------|
| 124.00 | SO/MCW 79%w, 19%m, 2%o | 0.610 |
| 33.00 | OWCM 70%m, 17%w, 10%o, 3% | 0.162 |
| 30.00 | MCO 75%o, 2%g | 0.148 |
| 30.00 | GO 50%o, 50%g | 0.421 |

Total Length: 217.00 ft

Total Volume: 1.341 bbl

Num Fluid Samples: 0

Num Gas Bombs: 0

Serial #:

Laboratory Name:

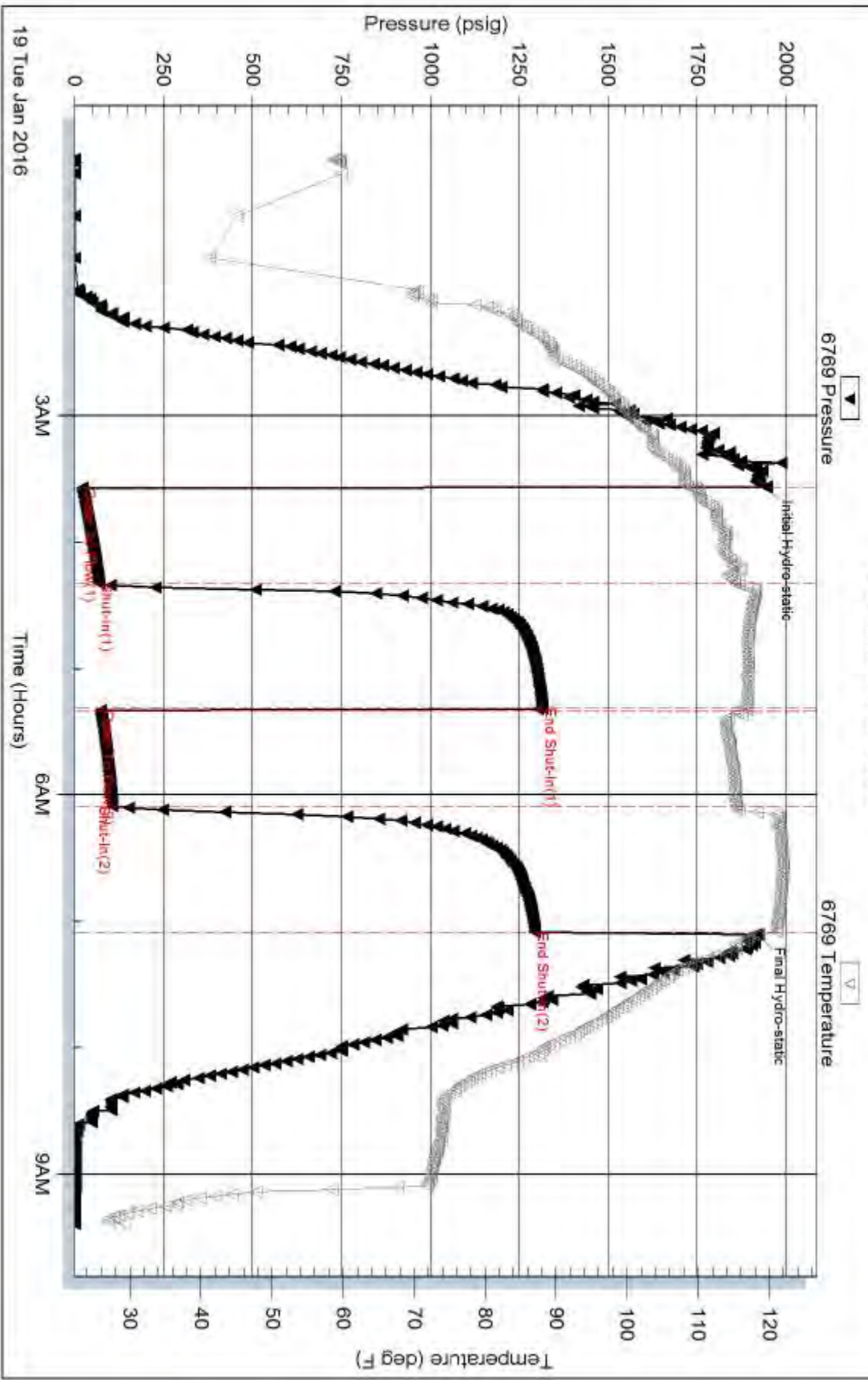
Laboratory Location:

Recovery Comments: Gravity is too low to check at current temp (guessing need around 90 deg to get a check)

RW = .655 ohms @ 26.6 deg F

Chlorides = 27,000 ppm

Pressure vs. Time





**TRILOBITE
TESTING, INC**

DRILL STEM TEST REPORT

Suemaour Exploration & Production

27/5s/28w Decatur KS

802 N Carancahua
Corpus Christi, TX 78401

Jacobs Brothers #1

Job Ticket: 62871

DST#: 2

ATTN: Rocky Milford

Test Start: 2016.01.19 @ 19:50:00

GENERAL INFORMATION:

Formation: **LKC "C - D"**

Deviated: No Whipstock: ft (KB)

Time Tool Opened: 22:34:00

Time Test Ended: 04:34:15

Test Type: Conventional Bottom Hole (Reset)

Tester: James Winder

Unit No: 83

Interval: 3947.00 ft (KB) To 3990.00 ft (KB) (TVD)

Reference Elevations: 2757.00 ft (KB)

Total Depth: 3990.00 ft (KB) (TVD)

2752.00 ft (CF)

Hole Diameter: 7.88 inches Hole Condition: Fair

KB to GR/CF: 5.00 ft

Serial #: 6769

Inside

Press@RunDepth: 132.83 psig @ 3948.00 ft (KB)

Capacity: 8000.00 psig

Start Date: 2016.01.19

End Date:

2016.01.20

Last Calib.:

2016.01.20

Start Time: 19:50:05

End Time:

04:34:15

Time On Btm:

2016.01.19 @ 22:33:45

Time Off Btm:

2016.01.20 @ 02:08:15

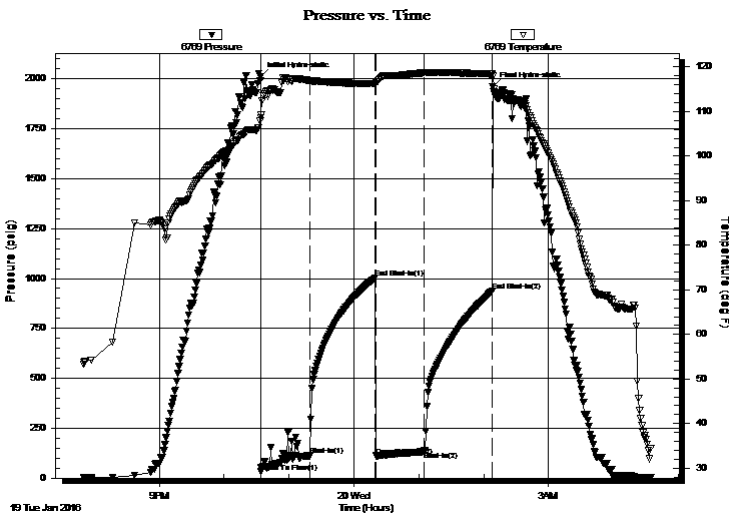
TEST COMMENT: 45 - IF: Blow built to 10" (surging blow first 15 min.) (Diesel in bucket)

60 - IS: No blow back

45 - FF: Blow built to 7"

60 - FS: No blow back

PRESSURE SUMMARY



| Time (Min.) | Pressure (psig) | Temp (deg F) | Annotation |
|-------------|-----------------|--------------|----------------------|
| 0 | 2010.63 | 107.86 | Initial Hydro-static |
| 1 | 30.88 | 108.67 | Open To Flow (1) |
| 46 | 112.37 | 116.99 | Shut-In(1) |
| 106 | 1000.96 | 116.21 | End Shut-In(1) |
| 107 | 111.51 | 116.60 | Open To Flow (2) |
| 152 | 132.83 | 118.70 | Shut-In(2) |
| 214 | 935.75 | 118.43 | End Shut-In(2) |
| 215 | 1961.27 | 117.98 | Final Hydro-static |

Recovery

| Length (ft) | Description | Volume (bbl) |
|-------------|----------------------------|--------------|
| 125.00 | MCW w/trace oil 84%w, 16%m | 0.61 |
| 125.00 | WCM w/trace oil 69%m, 31%w | 1.19 |
| | | |
| | | |
| | | |

Gas Rates

| | Choke (inches) | Pressure (psig) | Gas Rate (Mcf/d) |
|--|----------------|-----------------|------------------|
| | | | |

* Recovery from multiple tests



TRILOBITE TESTING, INC.

DRILL STEM TEST REPORT

Suemaor Exploration & Production

27/5s/28w Decatur KS

802 N Carancahua
Corpus Christi, TX 78401

Jacobs Brothers #1

ATTN: Rocky Milford

Job Ticket: 62871 **DST#: 2**
Test Start: 2016.01.19 @ 19:50:00

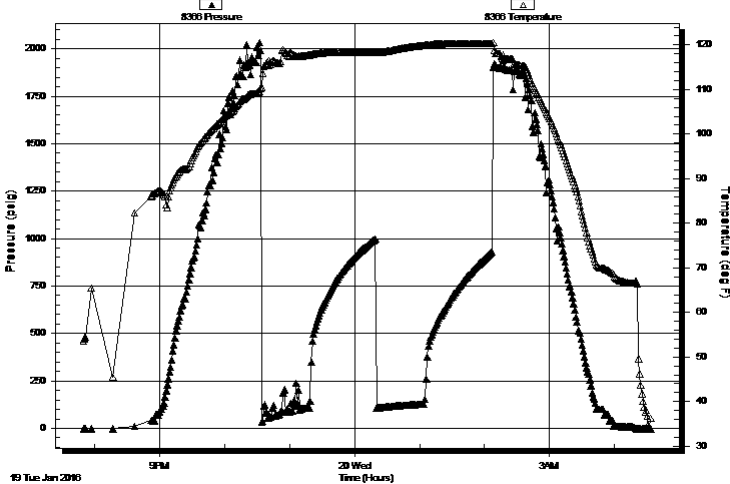
GENERAL INFORMATION:

Formation: **LKC "C - D"**
 Deviated: No Whipstock: ft (KB) Test Type: Conventional Bottom Hole (Reset)
 Time Tool Opened: 22:34:00 Tester: James Winder
 Time Test Ended: 04:34:15 Unit No: 83
Interval: 3947.00 ft (KB) To 3990.00 ft (KB) (TVD) Reference Elevations: 2757.00 ft (KB)
 Total Depth: 3990.00 ft (KB) (TVD) 2752.00 ft (CF)
 Hole Diameter: 7.88 inches Hole Condition: Fair KB to GR/CF: 5.00 ft

Serial #: 8366 Outside
 Press@RunDepth: psig @ 3948.00 ft (KB) Capacity: 8000.00 psig
 Start Date: 2016.01.19 End Date: 2016.01.20 Last Calib.: 2016.01.20
 Start Time: 19:50:05 End Time: 04:33:30 Time On Btm: Time Off Btm:

TEST COMMENT: 45 - IF: Blow built to 10" (surging blow first 15 min.) (Diesel in bucket)
 60 - ISI: No blow back
 45 - FF: Blow built to 7"
 60 - FSI: No blow back

Pressure vs. Time



PRESSURE SUMMARY

| Time (Min.) | Pressure (psig) | Temp (deg F) | Annotation |
|-------------|-----------------|--------------|------------|
| | | | |
| | | | |

Recovery

| Length (ft) | Description | Volume (bbl) |
|-------------|-----------------------------|--------------|
| 125.00 | MCW w/trace oil 84%w , 16%m | 0.61 |
| 125.00 | WCM w/trace oil 69%m, 31%w | 1.19 |
| | | |
| | | |
| | | |

* Recovery from multiple tests

Gas Rates

| Choke (inches) | Pressure (psig) | Gas Rate (Mcf/d) |
|----------------|-----------------|------------------|
| | | |



**TRILOBITE
TESTING, INC**

DRILL STEM TEST REPORT

FLUID SUMMARY

Suemaaur Exploration & Production

27/5s/28w Decatur KS

802 N Carancahua
Corpus Christi, TX 78401

Jacobs Brothers #1

Job Ticket: 62871

DST#: 2

ATTN: Rocky Milford

Test Start: 2016.01.19 @ 19:50:00

Mud and Cushion Information

Mud Type: Gel Chem

Cushion Type:

Oil API:

deg API

Mud Weight: 9.00 lb/gal

Cushion Length:

ft

Water Salinity:

32000 ppm

Viscosity: 66.00 sec/qt

Cushion Volume:

bbbl

Water Loss: 5.60 in³

Gas Cushion Type:

Resistivity: ohm.m

Gas Cushion Pressure:

psig

Salinity: 1000.00 ppm

Filter Cake: 2.00 inches

Recovery Information

Recovery Table

| Length ft | Description | Volume bbbl |
|--------------|------------------------------|----------------|
| 125.00 | MCW w /trace oil 84%w , 16%m | 0.615 |
| 125.00 | WCM w /trace oil 69%m, 31%w | 1.189 |

Total Length: 250.00 ft Total Volume: 1.804 bbl

Num Fluid Samples: 0

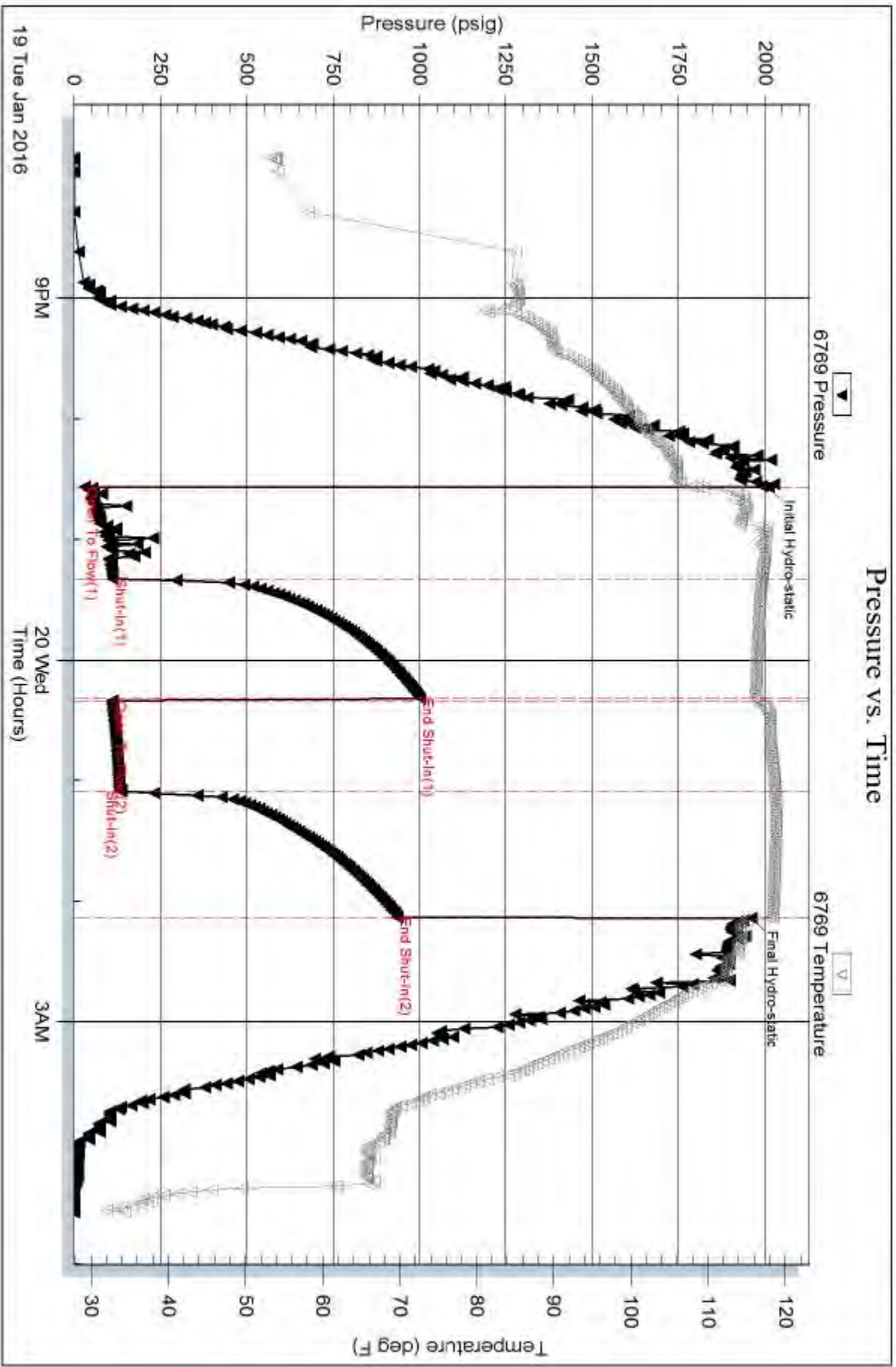
Num Gas Bombs: 0

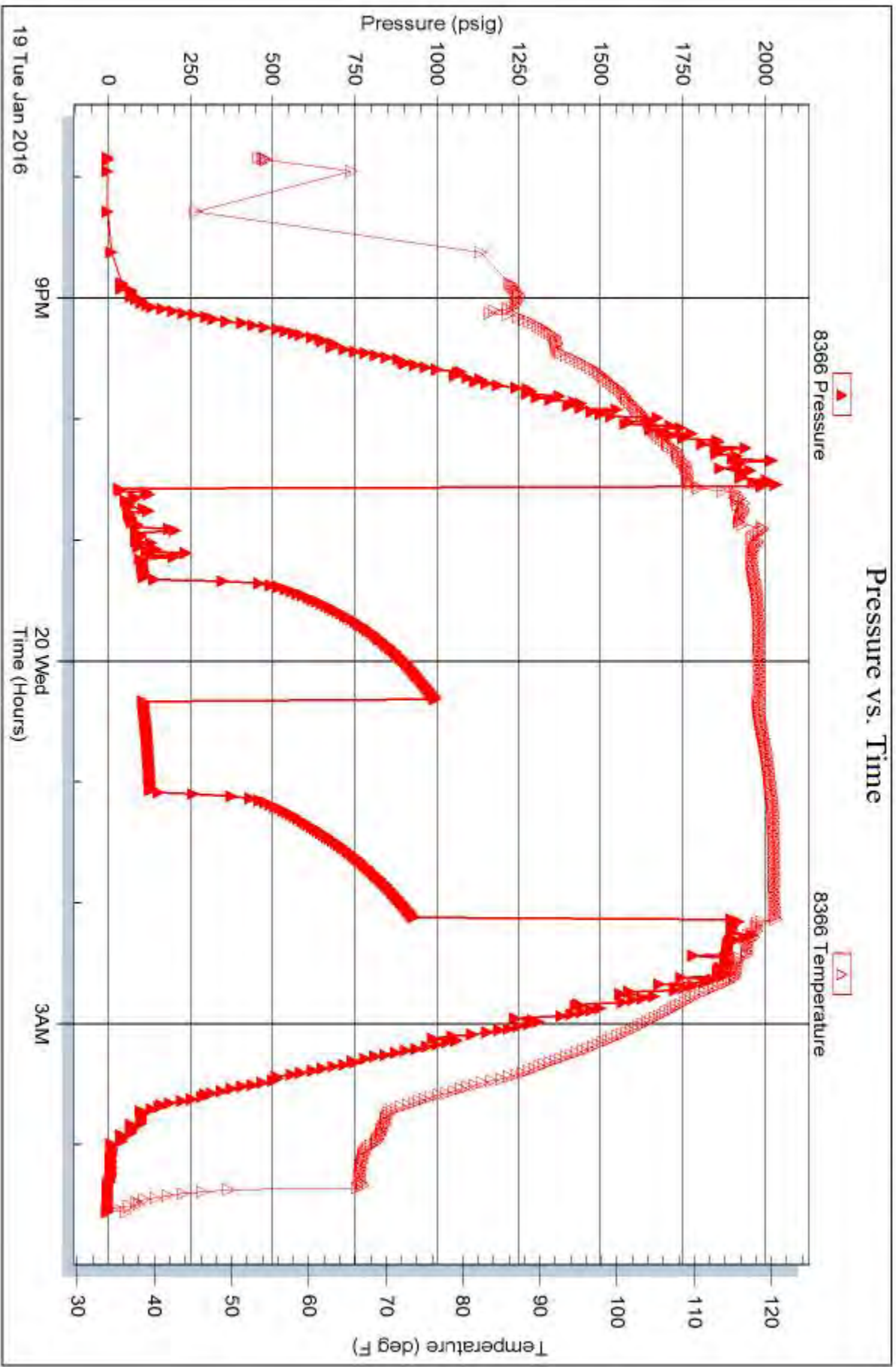
Serial #:

Laboratory Name:

Laboratory Location:

Recovery Comments: RW = .522 ohms @ 25.2 deg F Chlorides = 32,000 ppm







TRILOBITE TESTING, INC.

DRILL STEM TEST REPORT

Suemaour Exploration & Production

27/5s/28w Decatur KS

802 N Carancahua
Corpus Christi, TX 78401

Jacobs Brothers #1

Job Ticket: 62872

DST#: 3

ATTN: Rocky Milford

Test Start: 2016.01.20 @ 13:30:00

GENERAL INFORMATION:

Formation: **LKC "F - G"**
 Deviated: No Whipstock: ft (KB)
 Test Type: Conventional Bottom Hole (Reset)
 Time Tool Opened: 15:50:45
 Tester: James Winder
 Time Test Ended: 00:33:30
 Unit No: 83
 Interval: **3987.00 ft (KB) To 4028.00 ft (KB) (TVD)**
 Reference Elevations: 2757.00 ft (KB)
 Total Depth: 4028.00 ft (KB) (TVD)
 2752.00 ft (CF)
 Hole Diameter: 7.88 inches
 Hole Condition: Fair
 KB to GR/CF: 5.00 ft

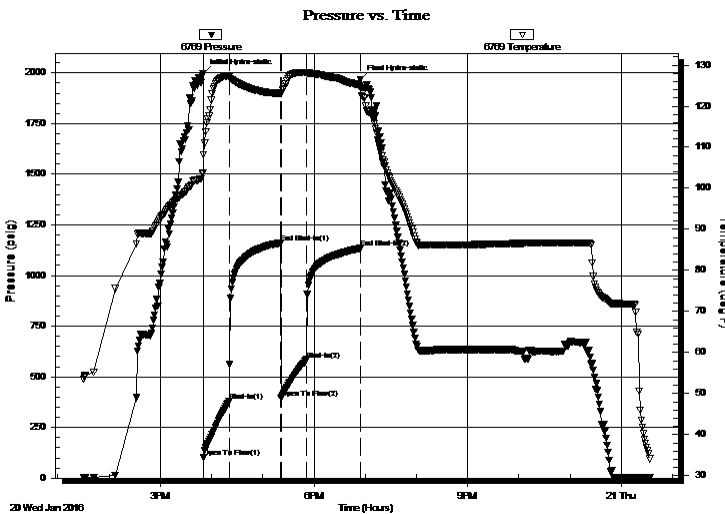
Serial #: 6769

Inside

Press @ Run Depth: 585.00 psig @ 3988.00 ft (KB) Capacity: 8000.00 psig
 Start Date: 2016.01.20 End Date: 2016.01.21 Last Calib.: 2016.01.21
 Start Time: 13:30:05 End Time: 00:33:30 Time On Btm: 2016.01.20 @ 15:50:00
 Time Off Btm: 2016.01.20 @ 18:54:30

TEST COMMENT: 30 - IF: Blow built to BOB (11") at 2 min. (Diesel in bucket)
 60 - IS: Blow back built to BOB at 34 min.
 30 - FF: Blow built to BOB at 2 3/4 min.
 60 - FS: Blow back built to BOB at 26 min.

PRESSURE SUMMARY



| Time (Min.) | Pressure (psig) | Temp (deg F) | Annotation |
|-------------|-----------------|--------------|----------------------|
| 0 | 1998.27 | 103.81 | Initial Hydro-static |
| 1 | 100.73 | 108.10 | Open To Flow (1) |
| 31 | 378.79 | 127.25 | Shut-In(1) |
| 91 | 1161.69 | 123.11 | End Shut-In(1) |
| 92 | 396.25 | 123.01 | Open To Flow (2) |
| 122 | 585.00 | 128.21 | Shut-In(2) |
| 184 | 1134.67 | 124.96 | End Shut-In(2) |
| 185 | 1967.26 | 124.47 | Final Hydro-static |

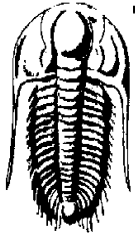
Recovery

| Length (ft) | Description | Volume (bbl) |
|-------------|--------------------------------------|--------------|
| 124.00 | SO/MCW 65%w , 31%m, 2%o, 2%g | 0.61 |
| 1076.00 | 5 min. SMCO 83%o, 15%g, 2%m | 14.52 |
| 0.00 | 10 min. SO/MW 48%w , 45%m, 4%o, 3%g | 0.00 |
| 0.00 | 15 - 30 min. SO/MCW 73%w , 26%m, 1%o | 0.00 |
| 95.00 | CGO 88%o, 12%g | 1.33 |
| 0.00 | 630' GIP | 0.00 |

* Recovery from multiple tests

Gas Rates

| Choke (inches) | Pressure (psig) | Gas Rate (Mcf/d) |
|----------------|-----------------|------------------|
| | | |



**TRILOBITE
TESTING, INC.**

DRILL STEM TEST REPORT

Suemaor Exploration & Production

27/5s/28w Decatur KS

802 N Carancahua
Corpus Christi, TX 78401

Jacobs Brothers #1

Job Ticket: 62872

DST#: 3

ATTN: Rocky Milford

Test Start: 2016.01.20 @ 13:30:00

GENERAL INFORMATION:

Formation: **LKC "F - G"**

Deviated: No Whipstock: ft (KB)

Time Tool Opened: 15:50:45

Time Test Ended: 00:33:30

Test Type: Conventional Bottom Hole (Reset)

Tester: James Winder

Unit No: 83

Interval: 3987.00 ft (KB) To 4028.00 ft (KB) (TVD)

Reference Elevations: 2757.00 ft (KB)

Total Depth: 4028.00 ft (KB) (TVD)

2752.00 ft (CF)

Hole Diameter: 7.88 inches Hole Condition: Fair

KB to GR/CF: 5.00 ft

Serial #: 8366 Outside

Press @ Run Depth: psig @ 3988.00 ft (KB)

Capacity: 8000.00 psig

Start Date: 2016.01.20 End Date: 2016.01.21

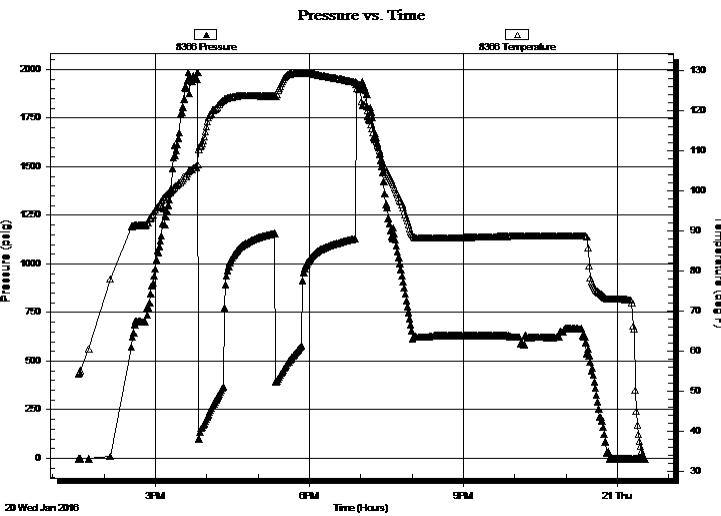
Last Calib.: 2016.01.21

Start Time: 13:30:05 End Time: 00:33:00

Time On Btm:

Time Off Btm:

TEST COMMENT: 30 - IF: Blow built to BOB (11") at 2 min. (Diesel in bucket)
60 - IS: Blow back built to BOB at 34 min.
30 - FF: Blow built to BOB at 2 3/4 min.
60 - FS: Blow back built to BOB at 26 min.



PRESSURE SUMMARY

| Time (Min.) | Pressure (psig) | Temp (deg F) | Annotation |
|-------------|-----------------|--------------|------------|
| | | | |

Recovery

| Length (ft) | Description | Volume (bbl) |
|-------------|-------------------------------------|--------------|
| 124.00 | SO/MCW 65%w, 31%m, 2%o, 2%g | 0.61 |
| 1076.00 | 5 min. SMO 83%o, 15%g, 2%m | 14.52 |
| 0.00 | 10 min. SO/MW 48%w, 45%m, 4%o, 3%g | 0.00 |
| 0.00 | 15 - 30 min. SO/MCW 73%w, 26%m, 1%o | 0.00 |
| 95.00 | CGO 88%o, 12%g | 1.33 |
| 0.00 | 630' GIP | 0.00 |

* Recovery from multiple tests

Gas Rates

| Choke (inches) | Pressure (psig) | Gas Rate (Mcf/d) |
|----------------|-----------------|------------------|
| | | |



**TRILOBITE
TESTING, INC.**

DRILL STEM TEST REPORT

FLUID SUMMARY

Suemaour Exploration & Production

27/5s/28w Decatur KS

802 N Carancahua
Corpus Christi, TX 78401

Jacobs Brothers #1

Job Ticket: 62872

DST#: 3

ATTN: Rocky Milford

Test Start: 2016.01.20 @ 13:30:00

Mud and Cushion Information

Mud Type: Gel Chem
Mud Weight: 9.00 lb/gal
Viscosity: 64.00 sec/qt
Water Loss: 6.40 in³
Resistivity: ohm.m
Salinity: 1100.00 ppm
Filter Cake: 2.00 inches

Cushion Type:
Cushion Length: ft
Cushion Volume: bbl
Gas Cushion Type:
Gas Cushion Pressure: psig

Oil API: 32.8 deg API
Water Salinity: 40000 ppm

Recovery Information

Recovery Table

| Length ft | Description | Volume bbl |
|--------------|--------------------------------------|---------------|
| 124.00 | SO/MCW 65%w , 31%m, 2%o, 2%g | 0.610 |
| 1076.00 | 5 min. SMCO 83%o, 15%g, 2%m | 14.520 |
| 0.00 | 10 min. SO/MW 48%w , 45%m, 4%o, 3%g | 0.000 |
| 0.00 | 15 - 30 min. SO/MCW 73%w , 26%m, 1%o | 0.000 |
| 95.00 | CGO 88%o, 12%g | 1.333 |
| 0.00 | 630' GIP | 0.000 |

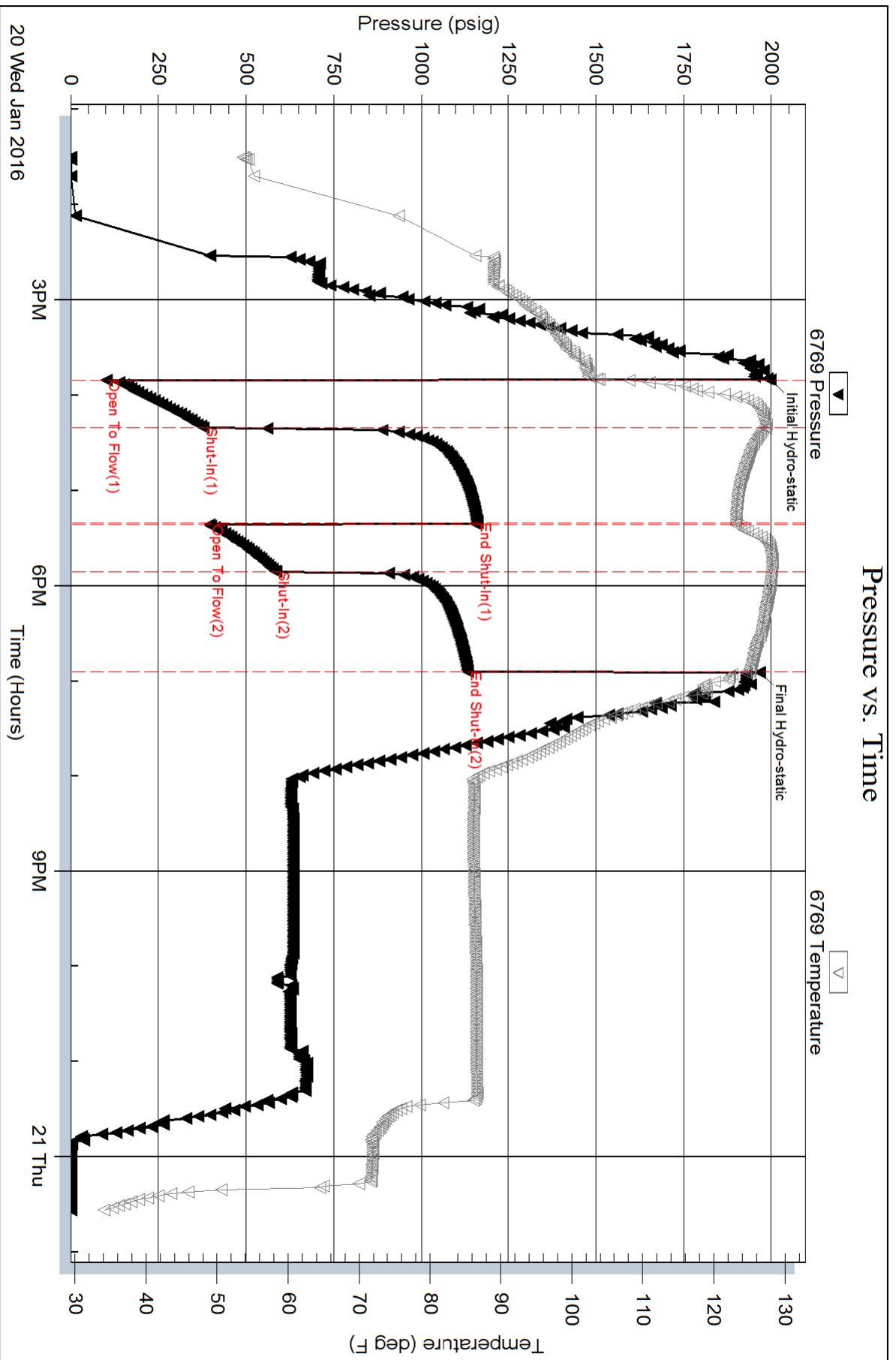
Total Length: 1295.00 ft Total Volume: 16.463 bbl

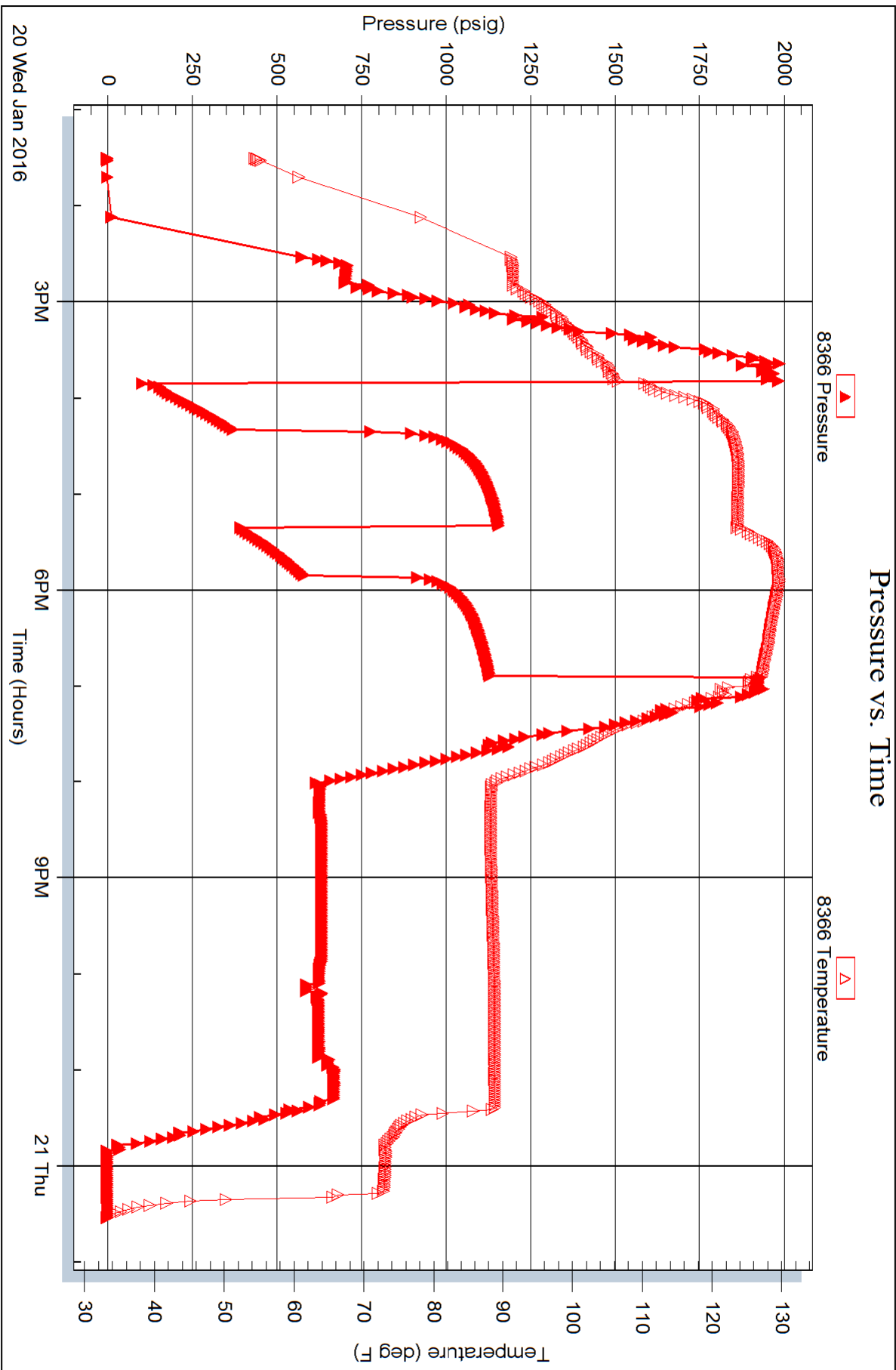
Num Fluid Samples: 0 Num Gas Bombs: 0 Serial #:

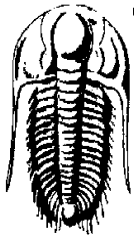
Laboratory Name: Laboratory Location:

Recovery Comments: Gravity = 30.2 api @ 32 deg F Corrected Gravity = 32.8 api
RW = .312 ohms @ 40.5 deg F Chlorides = 40,000 ppm
Reversed out 1076' after dumping first 95'
caught samples every 5 min.

Pressure vs. Time







**TRILOBITE
TESTING, INC.**

DRILL STEM TEST REPORT

Suemaour Exploration & Production

27/5s/28w Decatur KS

802 N Carancahua
Corpus Christi, TX 78401

Jacobs Brothers #1

ATTN: Rocky Milford

Job Ticket: 62873

DST#: 4

Test Start: 2016.01.21 @ 12:10:00

GENERAL INFORMATION:

Formation: **LKC "J"**

Deviated: No Whipstock: ft (KB)

Time Tool Opened: 14:20:30

Time Test Ended: 20:37:30

Test Type: Conventional Bottom Hole (Reset)

Tester: James Winder

Unit No: 83

Interval: 4067.00 ft (KB) To 4102.00 ft (KB) (TVD)

Reference Elevations: 2757.00 ft (KB)

Total Depth: 4102.00 ft (KB) (TVD)

2752.00 ft (CF)

Hole Diameter: 7.88 inches Hole Condition: Fair

KB to GR/CF: 5.00 ft

Serial #: 6769 Inside

Press @ RunDepth: 458.93 psig @ 4068.00 ft (KB)

Capacity: 8000.00 psig

Start Date: 2016.01.21

End Date:

2016.01.21

Last Calib.:

2016.01.21

Start Time:

12:10:05

End Time:

20:37:29

Time On Btm:

2016.01.21 @ 14:20:15

Time Off Btm:

2016.01.21 @ 17:25:00

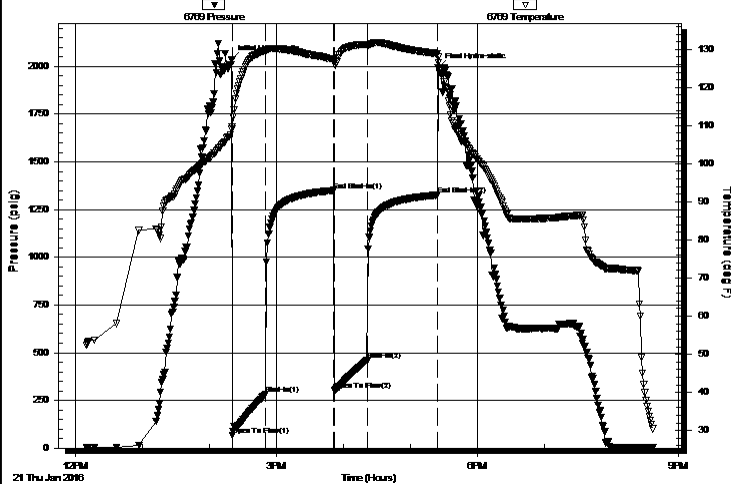
TEST COMMENT: 30 - IF: Blow built to BOB (11") at 2 1/4" (Diesel in bucket)

60 - IS: Blow back built to BOB at 13 min.

30 - FF: Blow built to BOB at 2 3/4 min.

60 - FS: Blow back built to BOB at 11 3/4 min.

Pressure vs. Time



PRESSURE SUMMARY

| Time (Min.) | Pressure (psig) | Temp (deg F) | Annotation |
|-------------|-----------------|--------------|----------------------|
| 0 | 2035.28 | 109.08 | Initial Hydro-static |
| 1 | 67.70 | 109.62 | Open To Flow (1) |
| 31 | 284.23 | 129.88 | Shut-In(1) |
| 91 | 1350.26 | 127.56 | End Shut-In(1) |
| 92 | 304.72 | 127.61 | Open To Flow (2) |
| 121 | 458.93 | 131.25 | Shut-In(2) |
| 184 | 1326.33 | 128.85 | End Shut-In(2) |
| 185 | 1991.81 | 127.95 | Final Hydro-static |

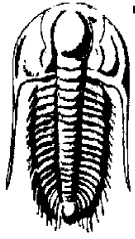
Recovery

| Length (ft) | Description | Volume (bbl) |
|-------------|--|--------------|
| 124.00 | GOCM 69% _m , 22% _o , 9% _g | 0.61 |
| 1108.00 | Rev out CGO 92% _o , 7% _g , 1% _m | 14.97 |
| 0.00 | GIP = 1480' | 0.00 |
| | | |
| | | |

Gas Rates

| | Choke (inches) | Pressure (psig) | Gas Rate (Mcf/d) |
|--|----------------|-----------------|------------------|
| | | | |

* Recovery from multiple tests



TRILOBITE TESTING, INC.

DRILL STEM TEST REPORT

Suemaer Exploration & Production

27/5s/28w Decatur KS

802 N Carancahua
Corpus Christi, TX 78401

Jacobs Brothers #1

ATTN: Rocky Milford

Job Ticket: 62873

DST#: 4

Test Start: 2016.01.21 @ 12:10:00

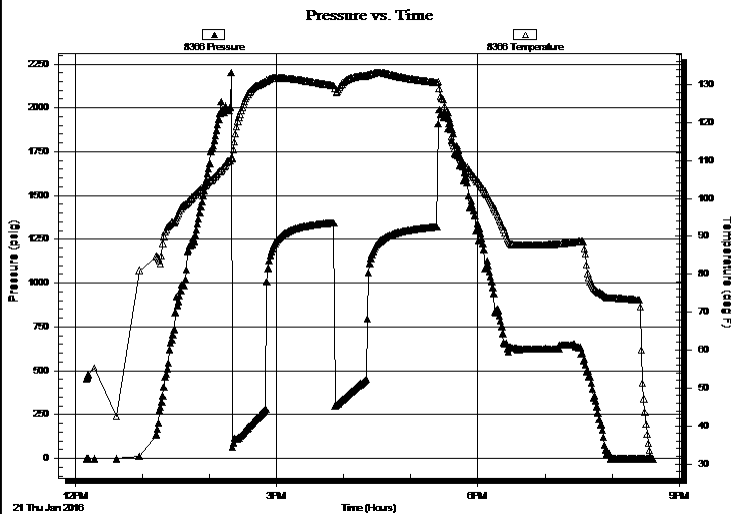
GENERAL INFORMATION:

Formation: **LKC "J"**
 Deviated: No Whipstock: ft (KB)
 Test Type: Conventional Bottom Hole (Reset)
 Time Tool Opened: 14:20:30 Tester: James Winder
 Time Test Ended: 20:37:30 Unit No: 83
 Interval: **4067.00 ft (KB) To 4102.00 ft (KB) (TVD)** Reference Elevations: 2757.00 ft (KB)
 Total Depth: 4102.00 ft (KB) (TVD) 2752.00 ft (CF)
 Hole Diameter: 7.88 inches Hole Condition: Fair KB to GR/CF: 5.00 ft

Serial #: 8366 Outside

Press @ RunDepth: psig @ 4068.00 ft (KB) Capacity: 8000.00 psig
 Start Date: 2016.01.21 End Date: 2016.01.21 Last Calib.: 2016.01.21
 Start Time: 12:10:05 End Time: 20:36:44 Time On Btm:
 Time Off Btm:

TEST COMMENT: 30 - IF: Blow built to BOB (11") at 2 1/4" (Diesel in bucket)
 60 - IS: Blow back built to BOB at 13 min.
 30 - FF: Blow built to BOB at 2 3/4 min.
 60 - FS: Blow back built to BOB at 11 3/4 min.



PRESSURE SUMMARY

| Time (Min.) | Pressure (psig) | Temp (deg F) | Annotation |
|-------------|-----------------|--------------|------------|
| | | | |
| | | | |
| | | | |
| | | | |
| | | | |
| | | | |
| | | | |
| | | | |
| | | | |
| | | | |
| | | | |
| | | | |

Recovery

| Length (ft) | Description | Volume (bbl) |
|-------------|--|--------------|
| 124.00 | GOCM 69% <i>m</i> , 22% <i>o</i> , 9% <i>g</i> | 0.61 |
| 1108.00 | Rev out CGO 92% <i>o</i> , 7% <i>g</i> , 1% <i>m</i> | 14.97 |
| 0.00 | GIP = 1480' | 0.00 |
| | | |
| | | |
| | | |
| | | |

* Recovery from multiple tests

Gas Rates

| Choke (inches) | Pressure (psig) | Gas Rate (Mcf/d) |
|----------------|-----------------|------------------|
| | | |



**TRILOBITE
TESTING, INC.**

DRILL STEM TEST REPORT

FLUID SUMMARY

Suemaaur Exploration & Production

27/5s/28w Decatur KS

802 N Carancahua
Corpus Christi, TX 78401

Jacobs Brothers #1

Job Ticket: 62873

DST#: 4

ATTN: Rocky Milford

Test Start: 2016.01.21 @ 12:10:00

Mud and Cushion Information

Mud Type: Gel Chem

Cushion Type:

Oil API:

40.4 deg API

Mud Weight: 9.00 lb/gal

Cushion Length:

ft

Water Salinity:

ppm

Viscosity: 55.00 sec/qt

Cushion Volume:

bbbl

Water Loss: 5.98 in³

Gas Cushion Type:

Resistivity: ohm.m

Gas Cushion Pressure:

psig

Salinity: 1500.00 ppm

Filter Cake: 2.00 inches

Recovery Information

Recovery Table

| Length ft | Description | Volume bbbl |
|--------------|--|----------------|
| 124.00 | GOCM 69% <i>m</i> , 22% <i>o</i> , 9% <i>g</i> | 0.610 |
| 1108.00 | Rev out CGO 92% <i>o</i> , 7% <i>g</i> , 1% <i>m</i> | 14.968 |
| 0.00 | GIP = 1480' | 0.000 |

Total Length: 1232.00 ft Total Volume: 15.578 bbl

Num Fluid Samples: 0

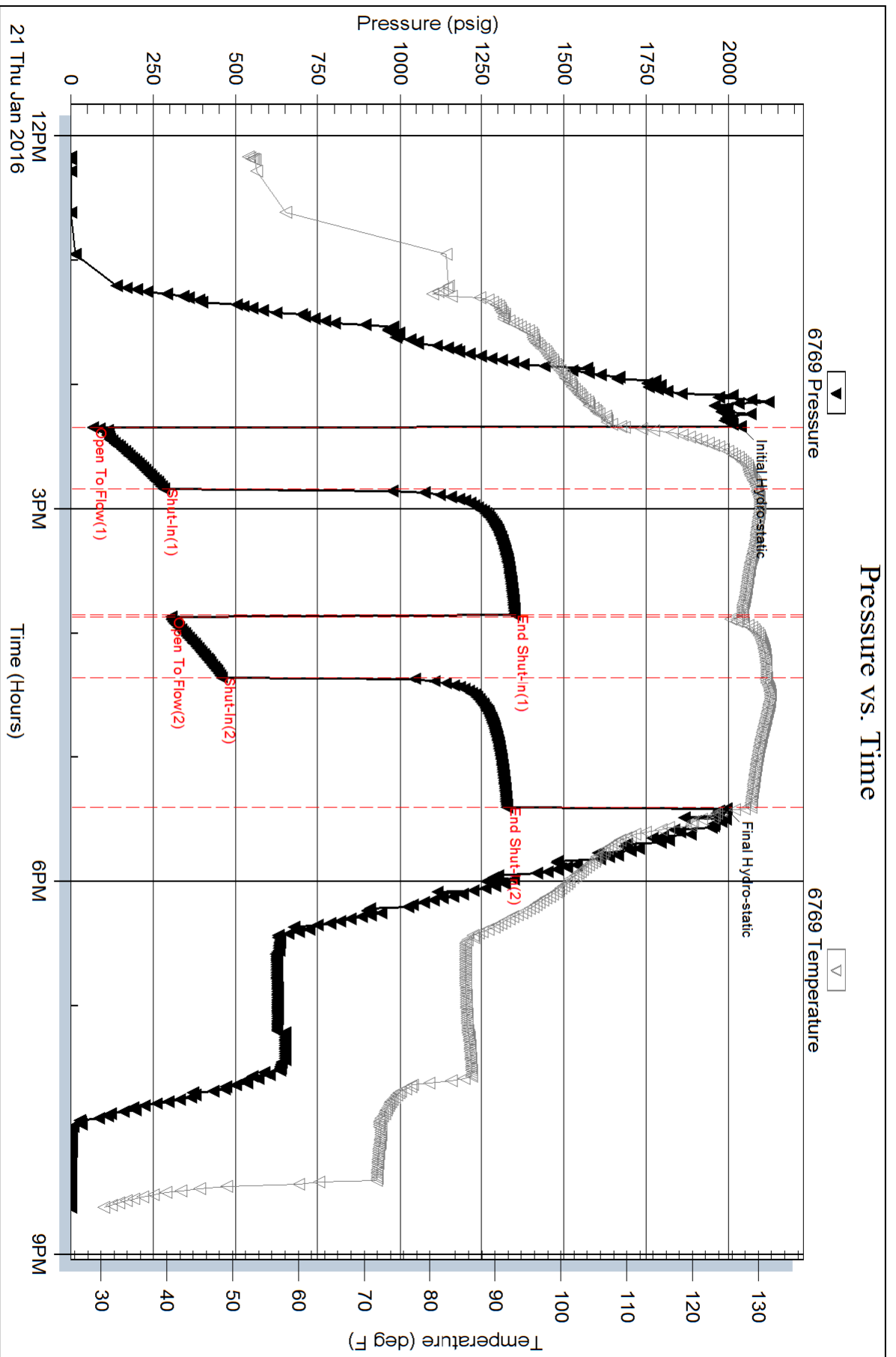
Num Gas Bombs: 0

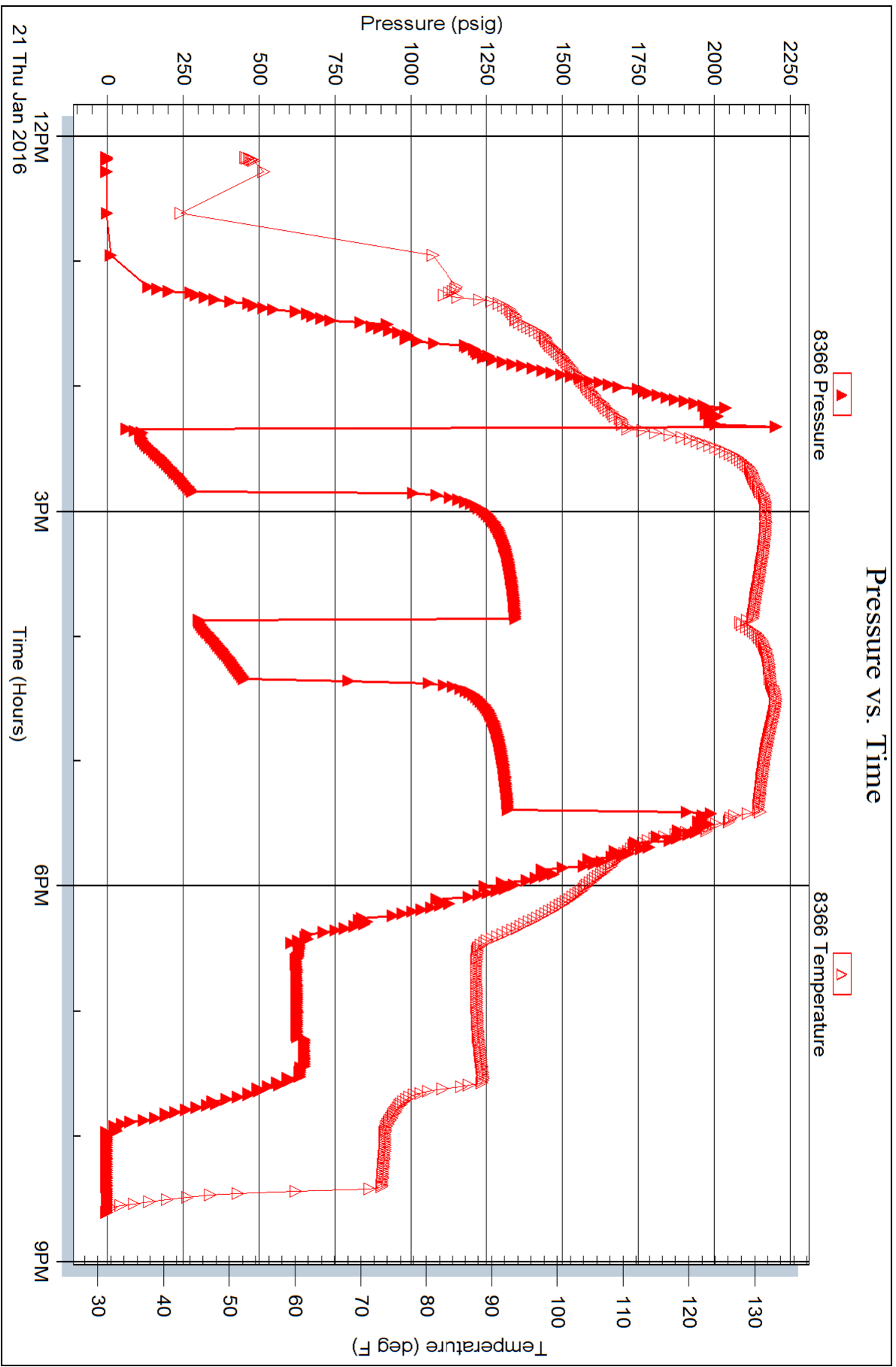
Serial #:

Laboratory Name:

Laboratory Location:

Recovery Comments: Gravity = 36.4 api @ 20 deg F Corrected Gravity = 40.4 api







**TRILOBITE
TESTING, INC**

DRILL STEM TEST REPORT

Suemaour Exploration & Production

27/5s/28w Decatur KS

802 N Carancahua
Corpus Christi, TX 78401

Jacobs Brothers #1

Job Ticket: 62874

DST#: 5

ATTN: Rocky Milford

Test Start: 2016.01.22 @ 05:45:00

GENERAL INFORMATION:

Formation: **LKC "K"**

Deviated: No Whipstock: ft (KB)

Time Tool Opened: 07:59:45

Time Test Ended: 13:12:45

Test Type: Conventional Bottom Hole (Reset)

Tester: James Winder

Unit No: 83

Interval: 4097.00 ft (KB) To 4125.00 ft (KB) (TVD)

Reference Elevations: 2757.00 ft (KB)

Total Depth: 4125.00 ft (KB) (TVD)

2752.00 ft (CF)

Hole Diameter: 7.88 inches Hole Condition: Fair

KB to GR/CF: 5.00 ft

Serial #: 6769

Inside

Press@RunDepth: 23.49 psig @ 4098.00 ft (KB)

Capacity: 8000.00 psig

Start Date: 2016.01.22

End Date:

2016.01.22

Last Calib.:

2016.01.22

Start Time: 05:45:05

End Time:

13:12:44

Time On Btm:

2016.01.22 @ 07:59:15

Time Off Btm:

2016.01.22 @ 11:17:30

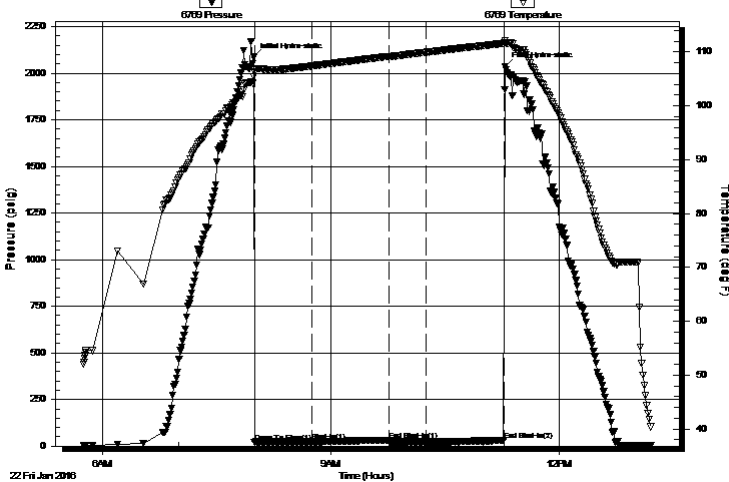
TEST COMMENT: 45 - IF: Blow built to 1 1/4" (Diesel in bucket)

60 - ISI: No blow back

30 - FF: No blow

60 - FSI: No blow

Pressure vs. Time



PRESSURE SUMMARY

| Time (Min.) | Pressure (psig) | Temp (deg F) | Annotation |
|-------------|-----------------|--------------|----------------------|
| 0 | 2086.25 | 105.38 | Initial Hydro-static |
| 1 | 21.59 | 106.25 | Open To Flow (1) |
| 46 | 23.11 | 107.39 | Shut-In(1) |
| 107 | 32.32 | 109.16 | End Shut-In(1) |
| 107 | 22.37 | 109.16 | Open To Flow (2) |
| 136 | 23.49 | 109.93 | Shut-In(2) |
| 198 | 29.98 | 111.58 | End Shut-In(2) |
| 199 | 2034.69 | 112.14 | Final Hydro-static |

Recovery

| Length (ft) | Description | Volume (bbl) |
|-------------|---------------------------|--------------|
| 5.00 | Mud w/oil spots 99%m, 1%o | 0.02 |
| | | |
| | | |
| | | |
| | | |

Gas Rates

| | Choke (inches) | Pressure (psig) | Gas Rate (Mcf/d) |
|--|----------------|-----------------|------------------|
| | | | |

* Recovery from multiple tests



**TRILOBITE
TESTING, INC**

DRILL STEM TEST REPORT

FLUID SUMMARY

Suemaour Exploration & Production

27/5s/28w Decatur KS

802 N Carancahua
Corpus Christi, TX 78401

Jacobs Brothers #1

Job Ticket: 62874

DST#: 5

ATTN: Rocky Milford

Test Start: 2016.01.22 @ 05:45:00

Mud and Cushion Information

Mud Type: Gel Chem

Cushion Type:

Oil API:

deg API

Mud Weight: 9.00 lb/gal

Cushion Length:

ft

Water Salinity:

ppm

Viscosity: 53.00 sec/qt

Cushion Volume:

bbbl

Water Loss: 5.98 in³

Gas Cushion Type:

Resistivity: ohm.m

Gas Cushion Pressure:

psig

Salinity: 1800.00 ppm

Filter Cake: 2.00 inches

Recovery Information

Recovery Table

| Length ft | Description | Volume bbl |
|--------------|---|---------------|
| 5.00 | Mud w /oil spots 99% _m , 1% _o | 0.025 |

Total Length: 5.00 ft Total Volume: 0.025 bbl

Num Fluid Samples: 0

Num Gas Bombs: 0

Serial #:

Laboratory Name:

Laboratory Location:

Recovery Comments:

