

**LEGEND:**

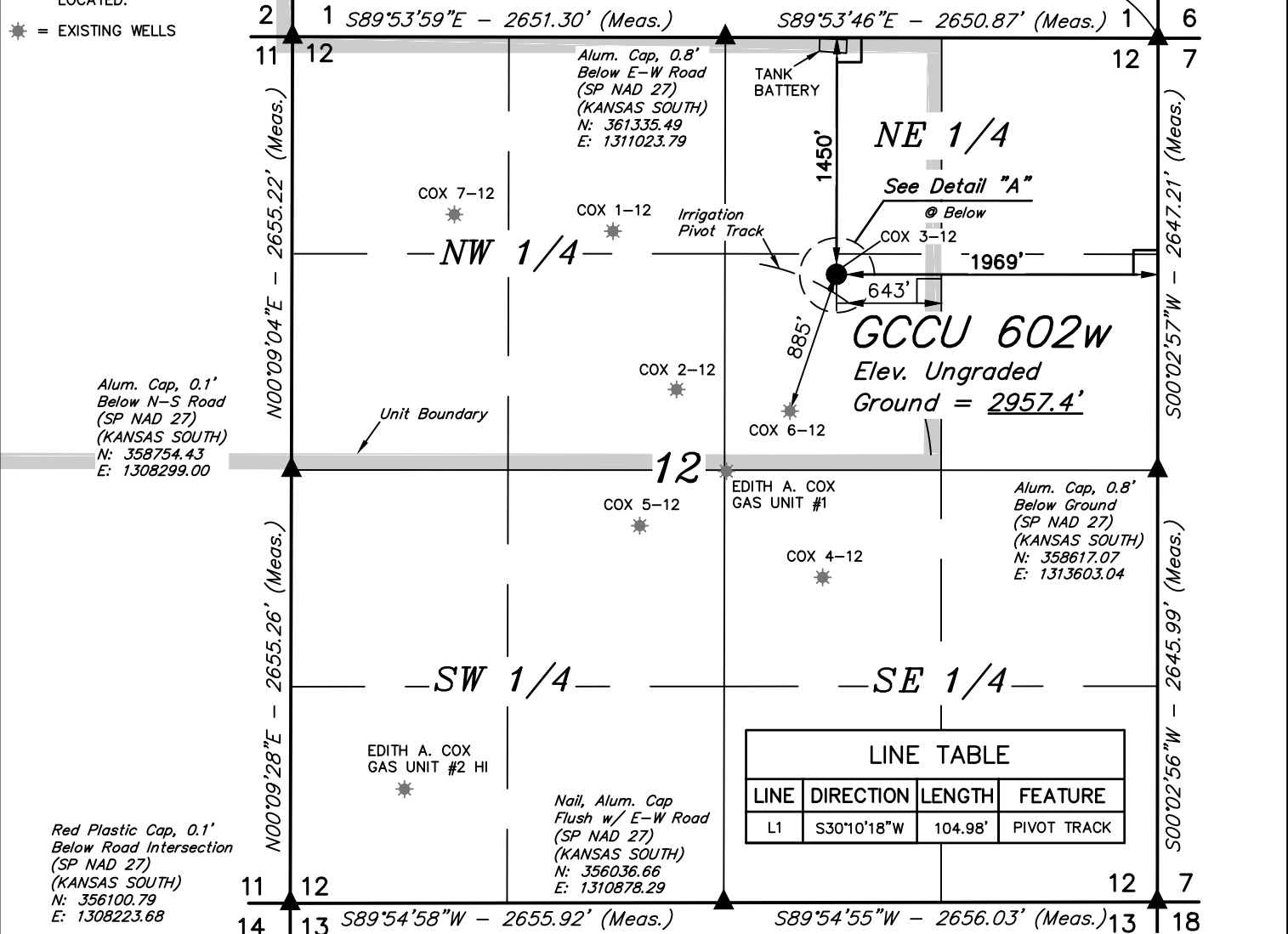
- └─ = 90° SYMBOL
- = PROPOSED WELLHEAD
- ▲ = SECTION CORNERS LOCATED.
- ★ = EXISTING WELLS

Pipe, 0.5'  
Below Road Intersection  
(SP NAD 27)  
(KANSAS SOUTH)  
N: 361408.04  
E: 1308374.01

**T28S, R33W, 6th P.M.**

Alum. Cap, 0.3'  
Below Road Intersection  
(SP NAD 27)  
(KANSAS SOUTH)  
N: 361262.79  
E: 1313673.12

R 33  
W 32  
R 32  
W 31

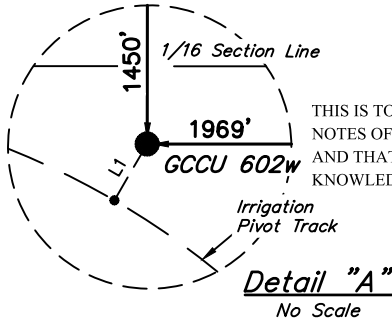


**LINE TABLE**

LINE	DIRECTION	LENGTH	FEATURE
L1	S30°10'18"W	104.98'	PIVOT TRACK



<b>NAD 83 (SURFACE LOCATION)</b>
LATITUDE = 37°37'51.34" (37.630928)
LONGITUDE = 100°52'39.32" (100.877589)
<b>NAD 27 (SURFACE LOCATION)</b>
LATITUDE = 37°37'51.26" (37.630906)
LONGITUDE = 100°52'37.72" (100.877144)
<b>STATE PLANE NAD 83 (KANSAS SOUTH)</b>
N: 1672220.56 E: 623889.77
<b>STATE PLANE NAD 27 (KANSAS SOUTH)</b>
N: 359867.21 E: 1311667.08



CERTIFICATE  
THIS IS TO CERTIFY THAT THE ABOVE PLAT WAS PREPARED FROM FIELD NOTES OF ACTUAL SURVEYS MADE BY ME OR UNDER MY SUPERVISION AND THAT THE SAME ARE TRUE AND CORRECT TO THE BEST OF MY KNOWLEDGE AND BELIEF.

**JUSTIN L. CARRICO**  
 Registered Land Surveyor  
 Registration No. 1451  
 State of Kansas  
 03-15-16

**BASIS OF BEARINGS**  
BASIS OF BEARINGS IS A G.P.S. OBSERVATION

**BASIS OF ELEVATION**  
THE BASIS OF ELEVATION, ELEV: 2943.84' WAS DERIVED FROM AN OPUS SOLUTION AT LAT: 37°33'17.64" LONG: 100°53'21.35" AND HAS A DATUM OF NAVD88.



**MERIT ENERGY COMPANY**

**GCCU 602w**  
**1450' FNL 1969' FEL**  
**SW 1/4 NE 1/4, SECTION 12, T28S, R33W, 6th P.M.**  
**HASKELL COUNTY, KANSAS**

SURVEYED BY	DATE	REVISED BY	DATE
J.P.	3-08-16		
DRAWN BY	DATE		
L.C.S.	03-10-16		
SCALE	1" = 1000'		



**UELS, LLC**  
 Corporate Office \* 85 South 200 East  
 Vernal, UT 84078 \* (435) 789-1017

**WELL LOCATION PLAT**